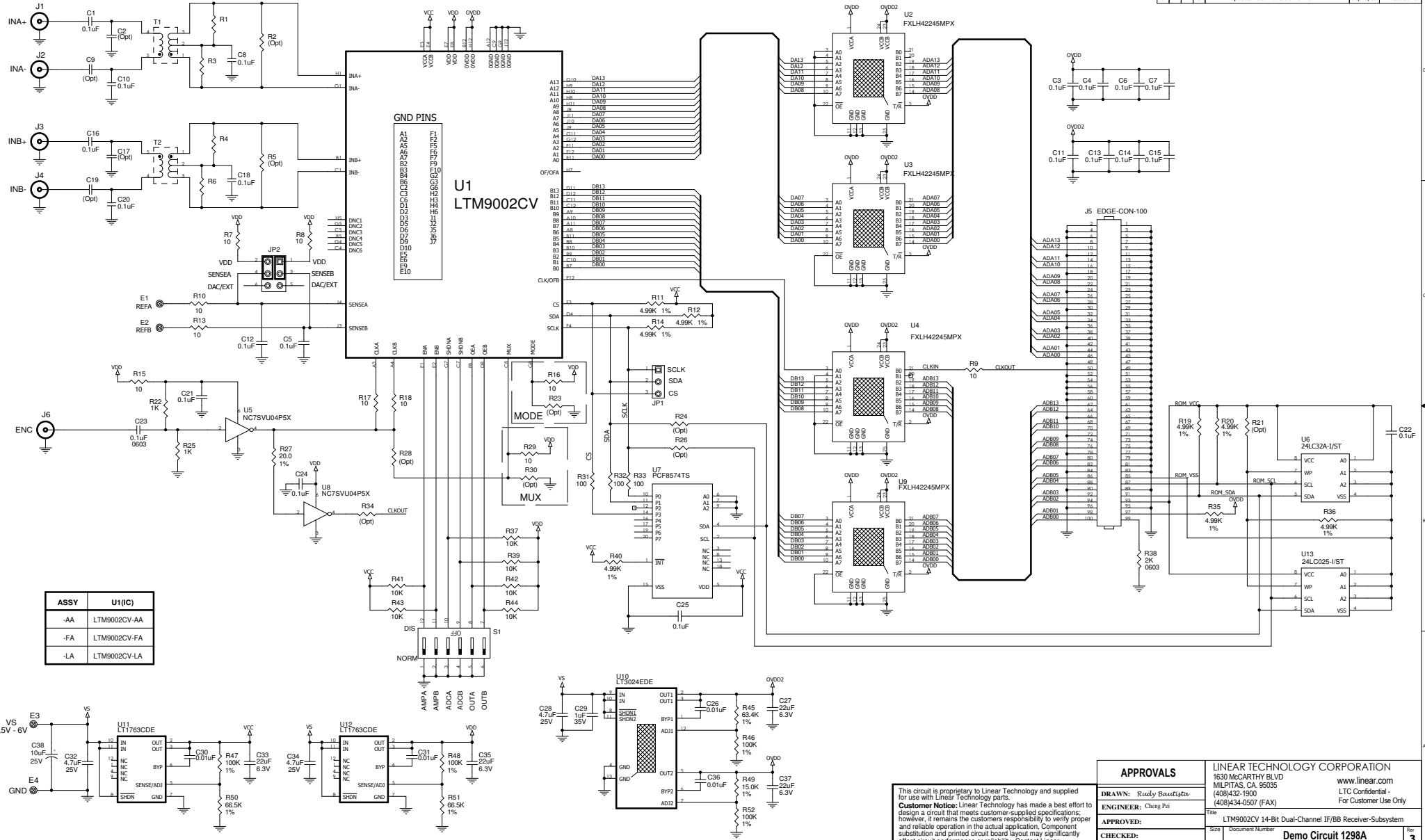


REVISION #				REVISION HISTORY		
SD	PC	FD	AD	DESCRIPTION	DATE	APPROVED
0	0	0	0	1st Release		
3	2	2	3	Update Documentation & BOM	06/23/09	D. Stuetje



ASSY	U1(IC)
-AA	LTM9002CV-AA
-FA	LTM9002CV-FA
-LA	LTM9002CV-LA

This circuit is proprietary to Linear Technology and supplied for use with Linear Technology parts.
Customer Notice: Linear Technology has made a best effort to design a circuit that meets customer-supplied specifications; however, it remains the customers responsibility to verify proper and reliable operation in the actual application. Component substitution and printed circuit board layout may significantly affect circuit performance or reliability. Contact Linear Applications Engineering for assistance.

APPROVALS		LINEAR TECHNOLOGY CORPORATION	
DRAWN: <i>Rudy Bautista</i>	1630 McCARTHY BLVD MILPITAS, CA 95035 (408)332-1900 (408)434-0507 (FAX)	www.linear.com LTC Confidential - For Customer Use Only	
ENGINEER: <i>Cheng He</i>	Title	Document Number	Rev
APPROVED:		LTM9002CV 14-Bit Dual-Channel IF/BB Receiver-Subsystem	3
CHECKED:		Demo Circuit 1298A	
Date: <i>Monday, August 10, 2009</i>	C:\ORCAD\WNCAPTURE\1298A\1298A_REV3.DSN	Sheet	1 of 1