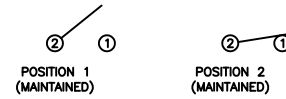


**SCHEMATIC**



**SPECIFICATIONS**

**FUNCTION:**  
1P1T OFF-ON

**RATING:**  
15A @125VAC [cURus]  
16(4)A @250VAC T125/55 [ENEC]

**CONTACT RESISTANCE:**  
Initial: 20mΩ Max. at 1A 5VDC

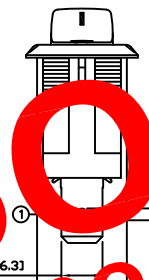
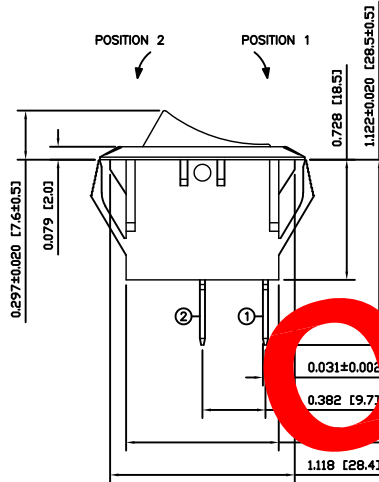
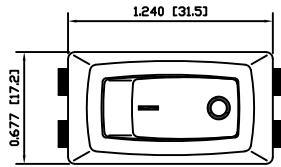
**INSULATION RESISTANCE:**  
100MΩ Min. at 500VDC

**DIELECTRIC STRENGTH:**  
1,000VAC for 1 Minute

**ELECTRICAL LIFE:**  
10,000 Cycles

**TEMPERATURE:**  
-20°C to 65°C [cURus]  
-20°C to 105°C [cURus]  
0°C to 85°C [ENEC, VDE]  
0°C to 125°C [ENEC, VDE]

**APPROVALS:**



**OBSOLETE**  
**June 2018**  
**PCR 23416**

**COLORS AND MARKINGS**

**BODY:**  
Black

**ACTUATOR:**  
Black

**MARKINGS:**  
I/O Vertical (1)

**MARKING COLOR:**  
White

**MATERIALS**

**BODY:**  
Polyamide 6/6 (PA66), UL94 V-2

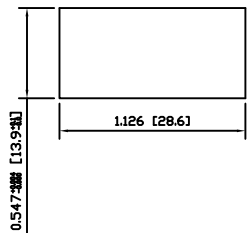
**ACTUATOR:**  
Polyamide 6/6 (PA66), UL94 V-2

**SPRING:**  
Steel

**CONTACTS:**  
Silver Clad Copper

**TERMINALS:**  
Silver Plated Copper  
Silver Plated Brass

**SUGGESTED PANEL CUTOUT**



ACTUATOR	A	09/08/19	CAB
BODY	A	09/08/19	CAB
COLORS	A	09/08/19	CAB
MATERIALS	A	09/08/19	CAB
SPECIFICATIONS	A	09/08/19	CAB
REFERENCE	REV.	DATE	BY

THE INFORMATION CONTAINED IN THIS DOCUMENT IS PROPRIETARY TO E-SWITCH AND IS NOT TO BE COPIED OR TRANSFERRED

C	REMOVED 20A @125VAC 3/4HP T105 [cURus] RATING	23370	05/17/18	MJR
B	UPDATED RATINGS	23175	01/19/18	MJR
A	INITIAL RELEASE	PCRD0149	10/08/09	CAB
REV.	DESCRIPTION	PCR	DATE	DRAWN BY

DIMENSIONS	
INCHES [MILLIMETERS]	
GENERAL TOLERANCES	
±0.008 [±0.2] / ±1'	
SCALE	PROJECTION
DRAWING NOT TO SCALE	1st Angle

RSC141D1121

DRAWING NUMBER	DATE	REVISION
38-RSC141D1121	OCTOBER 8, 2009	C