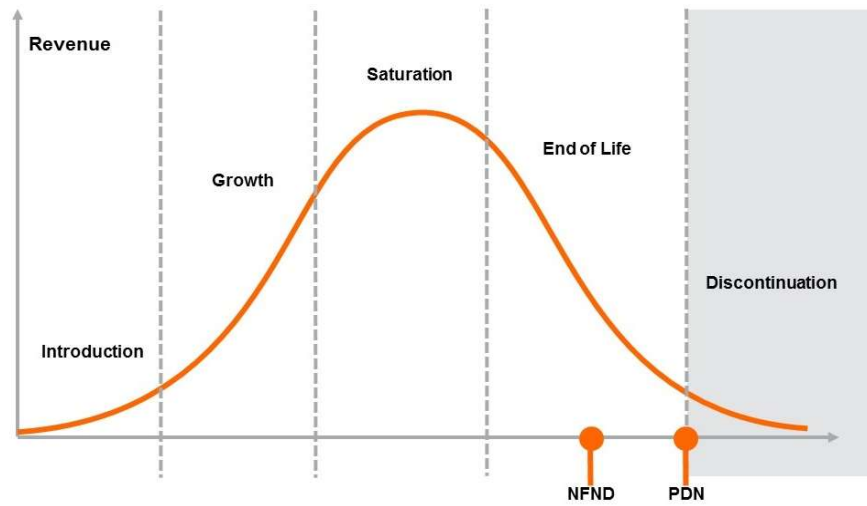


Light is OSRAM

Product Or Individual Q-Code Discontinuation (acc. JEDEC J-STD-048)
OS-PDN-2022-009

04 January 2022

Last order: 31 January 2022
Last delivery: 28 February 2022



Please direct your feedback to your local Sales office.

DISCONTINUED				NEW (REPLACEMENT)		
Device	Ordering Code	Brand	Reason for discontinuation	Device	Datasheet Ordering Code	Brand
GW T5LWF2.CM-FB5-27S5-1-20-T02-XX	Q65112A9671	DURIS L	Product end of life	No replacement		
GW T5LWF2.CM-FB5-27S5-1-20-T01-XX	Q65112A9673	DURIS L	Product end of life	No replacement		
GW T5LWF2.CM-FB6-50S4-1-20-T02-XX	Q65112A9675	DURIS L	Product end of life	No replacement		
GW T5LWF2.CM-FB9-50AS4-1-20-T01-XX	Q65113A0792	DURIS L	Product end of life	No replacement		