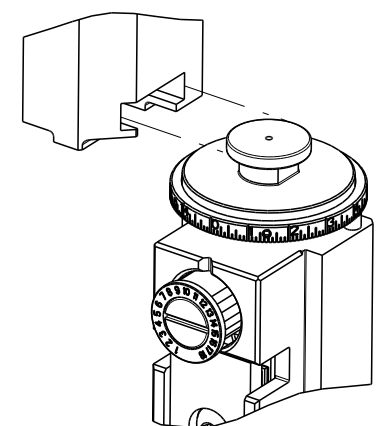


| PART NUMBER | REVISION | DESCRIPTION | FEED TYPE |
|-------------|----------|---------------------------------|-----------|
| 2151434-2 | E | FINE CRIMP HEIGHT ADJUST | PNEUMATIC |
| 7-2151434-2 | E | PNEUMATIC AND CRIMP TOOLING KIT | PNEUMATIC |
| 7-2151434-7 | A | CRIMP TOOLING KIT | - |

ATLANTIC VERSION TERMINATOR INTERFACE ADAPTER



| APPLICATOR DATA | | |
|-----------------|----------------|------|
| CRIMP | SIZE | TYPE |
| WIRE | 1.37 mm [.054] | F |
| INSUL | 1.96 mm [.077] | F |

APPLICATOR INSTRUCTIONS 408-35042

| TERMINAL DATA: MOLEX TERMINAL MOLEX CRIMP SPECIFICATION | | | |
|---|------------------------------|-------------|----------------|
| TERMINAL NAME: KK CRIMP TERMINAL | | | |
| WIRE STRIP LENGTH | INSULATION DIAMETER RANGE | | |
| 2.54-3.18 mm [.100-.125 IN] | Ø1.09-1.57 mm [.043-.062 IN] | | |
| TERMINAL APPLICATION SPECIFICATION | | | |
| TERMINALS APPLIED | | | |
| TE TERMINAL | MOLEX TERMINAL | TE TERMINAL | MOLEX TERMINAL |
| 286698-1 | 08-50-0113 | 286698-2 | 08-55-0101 |
| 286698-3 | 08-56-0109 | | |

| TERMINAL DATA: MOLEX TERMINAL MOLEX CRIMP SPECIFICATION | | | |
|---|------------------------------|-------------|----------------|
| TERMINAL NAME: KK CRIMP TERMINAL | | | |
| WIRE STRIP LENGTH | INSULATION DIAMETER RANGE | | |
| 2.54-3.18 mm [.100-.125 IN] | Ø1.09-1.57 mm [.043-.062 IN] | | |
| TERMINAL APPLICATION SPECIFICATION | | | |
| TERMINALS APPLIED | | | |
| TE TERMINAL | MOLEX TERMINAL | TE TERMINAL | MOLEX TERMINAL |
| 286698-4 | 08-52-0101 | 286698-5 | 08-65-0815 |
| 286698-6 | 08-65-0813 | 286698-7 | 97-00-0444 |
| 286698-8 | 08-55-0102 | 286698-9 | 08-70-0046 |
| 1-286698-0 | 08-52-0118 | 1-286698-1 | 08-52-0121 |
| 1-286698-2 | 08-50-0321 | 1-286698-3 | 08-65-0804 |
| 1-286698-4 | 08-65-0801 | 1-286698-5 | 08-65-0811 |
| 1-286698-6 | 08-65-0817 | 1-286698-7 | 40-07-0815 |
| 1-286698-8 | 97-00-0920 | | |

| TERMINAL DATA: MOLEX TERMINAL MOLEX CRIMP SPECIFICATION | | | |
|---|------------------------------|-------------|----------------|
| TERMINAL NAME: KK CRIMP TERMINAL | | | |
| WIRE STRIP LENGTH | INSULATION DIAMETER RANGE | | |
| 2.54-3.18 mm [.100-.125 IN] | Ø1.20-1.70 mm [.047-.067 IN] | | |
| TERMINAL APPLICATION SPECIFICATION | | | |
| TERMINALS APPLIED | | | |
| TE TERMINAL | MOLEX TERMINAL | TE TERMINAL | MOLEX TERMINAL |
| 1949741-1 | 08-70-0048 | 1949741-2 | 08-70-0064 |

| WIRE SIZE | CRIMP HEIGHT mm [INCH] | CRIMP HEIGHT REFERENCE SETTING |
|-----------|------------------------------|--------------------------------|
| 22 AWG | 0.815+/-0.025 [.032+/-0.001] | 6.2 |
| 24 AWG | 0.760+/-0.030 [.030+/-0.001] | 6.4 |
| 26 AWG | 0.735+/-0.025 [.029+/-0.001] | 6.6 |
| 28 AWG | 0.705+/-0.025 [.028+/-0.001] | 6.8 |
| 30 AWG | 0.685+/-0.025 [.027+/-0.001] | 7.0 |

| WIRE SIZE | CRIMP HEIGHT mm [INCH] | CRIMP HEIGHT REFERENCE SETTING |
|-----------|--------------------------------|--------------------------------|
| 22 AWG | 0.815+/-0.025 [.032+/-0.001] | 6.2 |
| 24 AWG | 0.765+/-0.025 [.030+/-0.001] | 6.4 |
| 26 AWG | 0.710+/-0.030 [.028+/-0.001] | 6.6 |
| 28 AWG | 0.685+/-0.025 [.027+/-0.001] | 6.8 |
| 30 AWG | 0.645+/-0.015 [.0265+/-0.0005] | 7.0 |

| WIRE SIZE | CRIMP HEIGHT mm [INCH] | CRIMP HEIGHT REFERENCE SETTING |
|-----------|------------------------------|--------------------------------|
| 22 AWG | 0.815+/-0.025 [.032+/-0.001] | 6.2 |
| 24 AWG | 0.765+/-0.025 [.030+/-0.001] | 6.4 |
| 26 AWG | 0.710+/-0.030 [.028+/-0.001] | 6.6 |
| 28 AWG | 0.685+/-0.025 [.027+/-0.001] | 6.8 |

- RECOMMENDED SPARE PARTS
- REFER TO SUPPLIED INSTRUCTION SHEET FOR CLEANING, LUBRICATION AND STORAGE OF APPLICATOR.
- APPLY PART NUMBER 2-23419-6 LOCTITE TO THREADS OF ITEM 242.
- CRIMP HEIGHT REFERENCE SETTING WAS THE SETTING USED WHEN THE APPLICATOR WAS QUALIFIED AT THE FACTORY. ADJUSTMENT MAY BE NECESSARY WHEN RUNNING APPLICATOR IN THE FIELD.
- TERMINAL PITCH NOT COMPATIBLE WITH MECHANICAL FEED.
- UNLESS SPECIFIED OTHERWISE TORQUE VALUES SHALL BE USED PER DOCUMENT, 101-35000.
- PLEASE REFER TO MOLEX APPLICATION TOOLING SPECIFICATION SHEET FOR COMPLETE TERMINAL LISTING.
- TERMINAL LUBRICANT IS RECOMMENDED.

***WARNING**
ON INSTALLATION, SET WIRE DISC TO CRIMP HEIGHT REFERENCE SETTING FOR LARGEST WIRE SIZE. CRIMP HEIGHT REFERENCE SETTINGS GREATER THAN THE VALUE SHOWN MAY CAUSE DAMAGE TO THE CRIMP TOOLING, REFER TO THE INSTRUCTION SHEET FOR PROPER SETUP AND ADJUSTMENTS.

ATLANTIC VERSION
Shown on sheets 1 of 4 & 2 of 4
(Pacific version shown on sheets 3 of 4 & 4 of 4)

| LOC | DIST | REVISIONS | | | | | |
|-----|------|-----------|-----|---------------|-----------|-----|------|
| | | P | LTN | DESCRIPTION | DATE | DWN | APVD |
| A | 66 | B | | ECR-14-015482 | 17OCT2014 | KH | GB |
| | | D | | ECR-18-016476 | 17OCT2018 | FL | TE |
| | | D1 | | ECR-19-000561 | 14JAN2019 | MZ | YY |
| | | E | | ECR-19-009011 | 08JUN2019 | TB | TE |

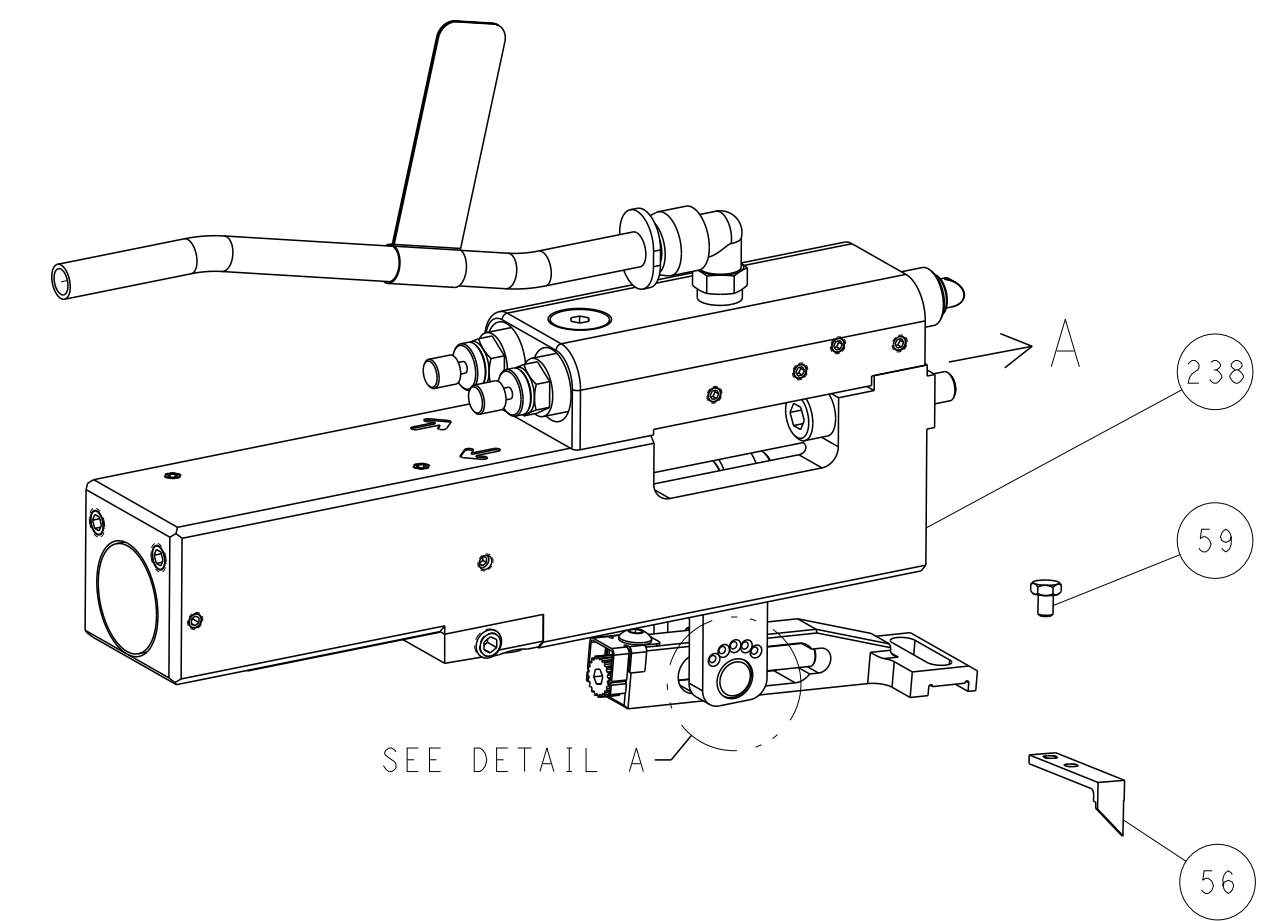
| | | | | | |
|---|-----|-----|-------------|-------------------------------------|-----|
| - | 1 | 1 | 23238-1 | INSERT, COUPLING | 278 |
| - | 1 | 1 | 2030758-3 | TUBING, POLYURETHANE | 277 |
| - | 1 | 1 | 5018030-2 | NUT, HEX, REG, RoHS, M4 | 276 |
| - | 1 | 1 | 986220-3 | CLAMP, CABLE, BLACK | 275 |
| - | 1 | 1 | 1-2168083-0 | SCR, SKT HD CAP, RoHS, M4 X 10 | 274 |
| - | 1 | 1 | 2217068-1 | BRACKET, AIR BLAST | 273 |
| - | 1 | 1 | 2119641-1 | FEED CAM, AIR FEED | 248 |
| - | 1 | 1 | 2119082-5 | CAM, SNAIL, INSULATION ADJUSTMENT | 244 |
| - | 1 | 1 | 2079764-1 | WASHER, WAVE SPRING, CREST-TO-CREST | 243 |
| - | 1 | 1 | 2119083-1 | RETAINER, INSULATION DIAL | 242 |
| - | 1 | 1 | 2844940-1 | AIR FEED MODULE | 238 |
| - | 1 | 1 | 2063687-7 | PLATE, REAR SHEAR | 233 |
| - | 1 | 1 | 1803174-3 | BLADE, SLUG | 232 |
| - | REF | REF | 994970-2 | COUNTER, MAGNETIC | 164 |
| - | 2 | 2 | 2031943-1 | SPACER, CRIMPER, SPECIAL | 156 |
| - | 1 | 1 | 1-22281-8 | SPRING, COMPRESSION | 121 |
| - | 1 | 1 | 2119955-1 | ASSY, LUBRICATOR, SIDE FEED | 113 |
| - | 1 | 1 | 2844908-1 | SCREW, LOCKING | 99 |
| - | 1 | 1 | 2844907-1 | POST, LOCKING | 98 |
| - | 1 | 1 | 2-690487-2 | GUIDE, FRONT STRIP | 96 |
| - | 2 | 2 | 2168083-1 | SCR, SKT HD CAP, RoHS, M3 X 8.0 | 95 |
| - | 1 | 1 | 2168083-6 | SCR, SKT HD CAP, RoHS, M5 X 6.5 | 93 |
| - | 1 | 1 | 2168083-8 | SCR, SKT HD CAP, RoHS, M4 X 16 | 88 |
| - | 1 | 1 | 455888-7 | SPACER, CRIMPER | 82 |
| - | 1 | 1 | 1803607-3 | DOCUMENTATION PACKAGE | 71 |
| - | 1 | 1 | 2119791-9 | DEPRESSOR, WIRE | 70 |
| - | 1 | 1 | 2119740-1 | TAG, IDENTIFICATION | 67 |
| - | 2 | 2 | 2168078-1 | SCREW, DRIVE, RH, RoHS, 2 x .188 | 66 |
| - | 2 | 2 | 2-18032-5 | SCR, SET, FLT PNT, M5 X 20.0 | 61 |
| - | 1 | 1 | 2168083-2 | SCR, SKT HD CAP, RoHS, M4 X 8.0 | 60 |
| - | 1 | 1 | 5-18022-5 | SCR, HEX HD CAP, M4 X 6.0 | 59 |
| - | 1 | 1 | 1338685-1 | PAWL, FEED | 56 |
| - | 1 | 1 | 18023-9 | SCR, SKT HD CAP M4 X 6.0 | 49 |
| - | 1 | 1 | 1803583-9 | APPLICATOR BASIC ASSEMBLY, SF | 46 |
| - | 1 | 1 | 1803515-1 | RAM ASSEMBLY, SF ATLANTIC | 44 |
| - | 1 | 1 | 1803602-1 | SCR, BHSC, RoHS (M8 X 25) | 41 |
| - | 2 | 2 | 2079383-5 | SCR, BHSC, RoHS (M4 X 20) | 33 |
| - | 2 | 2 | 1-2844962-3 | SPACER, CYLINDRICAL, STRIP GUIDE | 30 |
| - | 1 | 1 | 2-2844938-9 | PLATE, STRIP GUIDE | 29 |
| - | 2 | 2 | 22280-1 | SPRING, COMPRESSION | 27 |
| - | 1 | 1 | 356835-1 | LEVER, DRAG RELEASE | 26 |
| - | 1 | 1 | 1-690754-5 | DRAG, SPECIAL | 25 |
| - | 1 | 1 | 1320928-2 | STRIP GUIDE | 24 |
| - | 1 | 1 | 980371-4 | SCR, SKT HD SHLDR 5.0 DIA X 6.0 | 23 |
| - | 1 | 1 | 2168083-2 | SCR, SKT HD CAP, RoHS, M4 X 8.0 | 21 |
| - | 4 | 4 | 1-18028-2 | WASHER, FLAT, REG M4 | 20 |
| - | 1 | 1 | 1-2119533-1 | STRIPPER, SIDE FEED | 19 |
| - | - | - | - | - | 10 |
| - | - | - | - | - | 9 |
| - | - | - | - | - | 7 |
| - | - | - | - | - | 6 |
| - | - | - | - | - | 5 |
| - | 1 | 1 | 3-238009-5 | BLOCK, FL CRIMPER SPACER | 4 |
| - | 1 | 2 | 1-1803017-6 | CRIMPER, INSULATION F | 3 |
| - | - | - | - | - | 2 |
| - | 1 | 2 | 1-1803173-1 | CRIMPER, WIRE | 1 |

| DIMENSIONS: | | TOLERANCES UNLESS OTHERWISE SPECIFIED: | | MATERIAL: | | FINISH: | | WEIGHT: | | SCALE: | |
|-------------|---------|--|---------|-----------|---------|---------|--------|---------|-------|--------|-----|
| mm | 0 PLC ± | 1 PLC ± | 2 PLC ± | 3 PLC ± | 4 PLC ± | ANGLES | FINISH | WEIGHT | SCALE | SHEET | REV |
| | | | | | | | | | | 1 OF 4 | E |

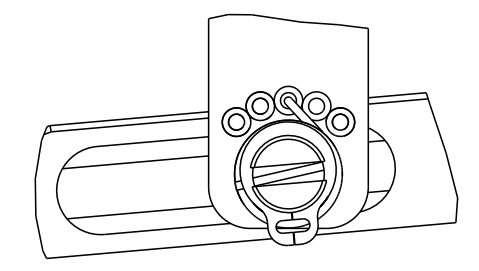
| LOC | DIST | REVISIONS | | | | | |
|-----|------|-----------|-----|-------------|------|-----|------|
| A | 66 | P | LTN | DESCRIPTION | DATE | DWN | APVD |
| | | - | | SEE SHEET 1 | - | - | - |
| | | | | | | | |
| | | | | | | | |

FEED TYPE

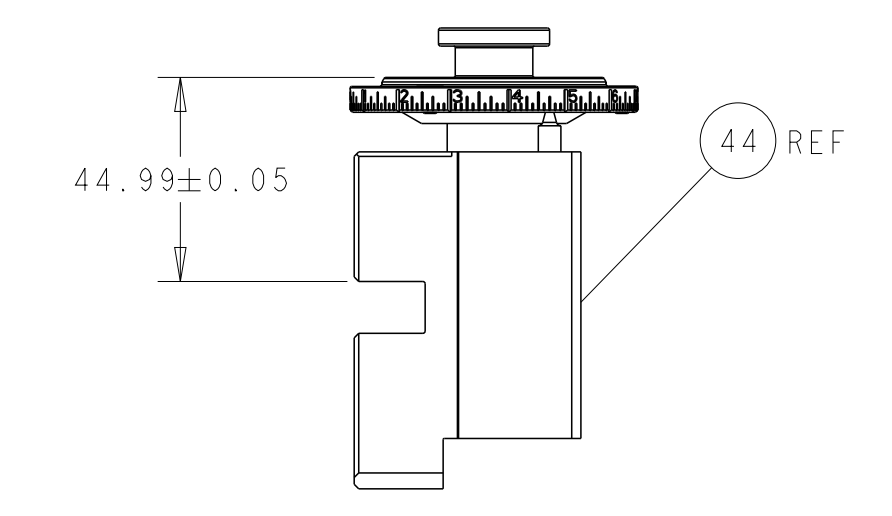
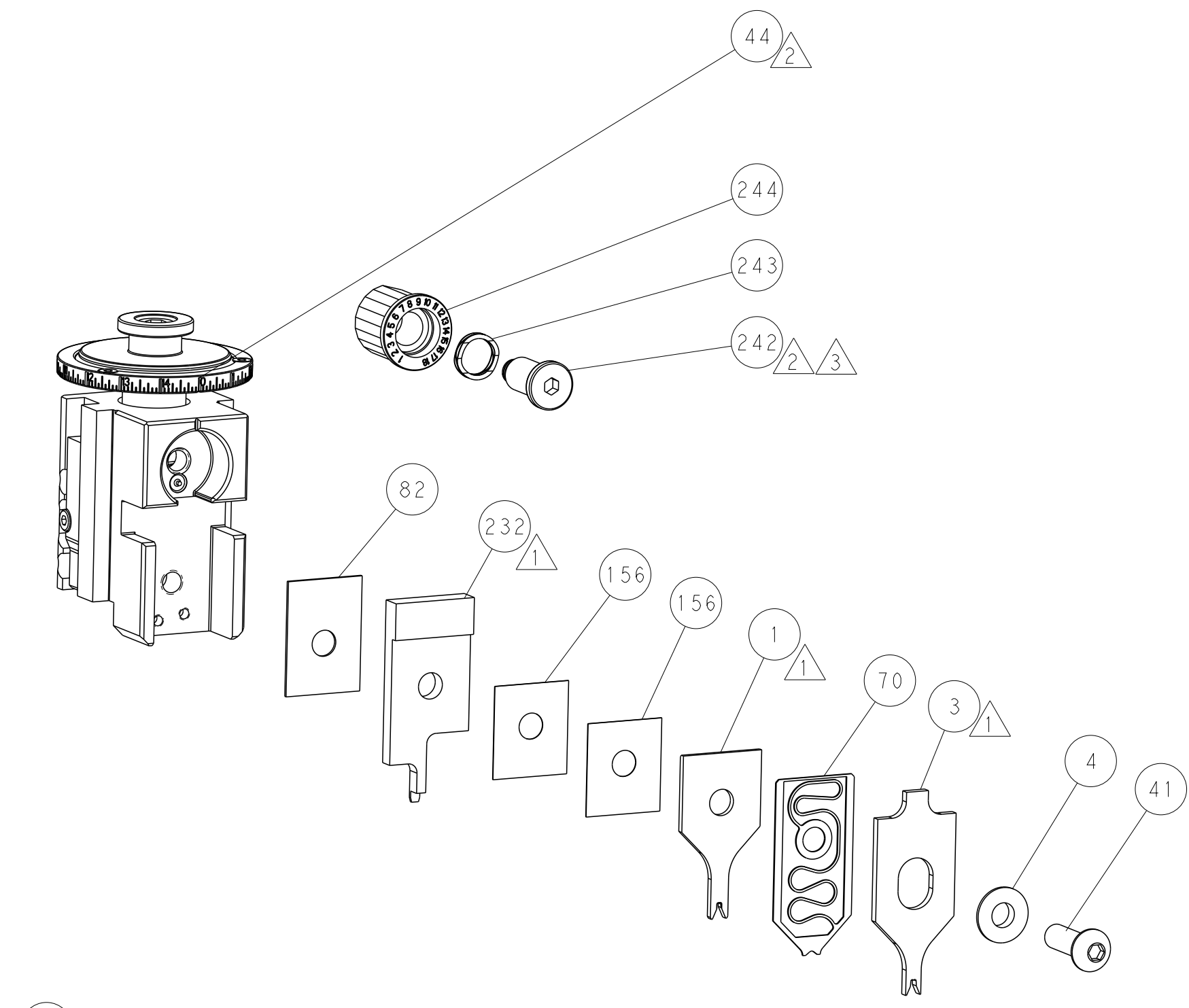
PNEUMATIC



FEED SPRING SETTING POSITION
(SHOWN FROM REAR SIDE)

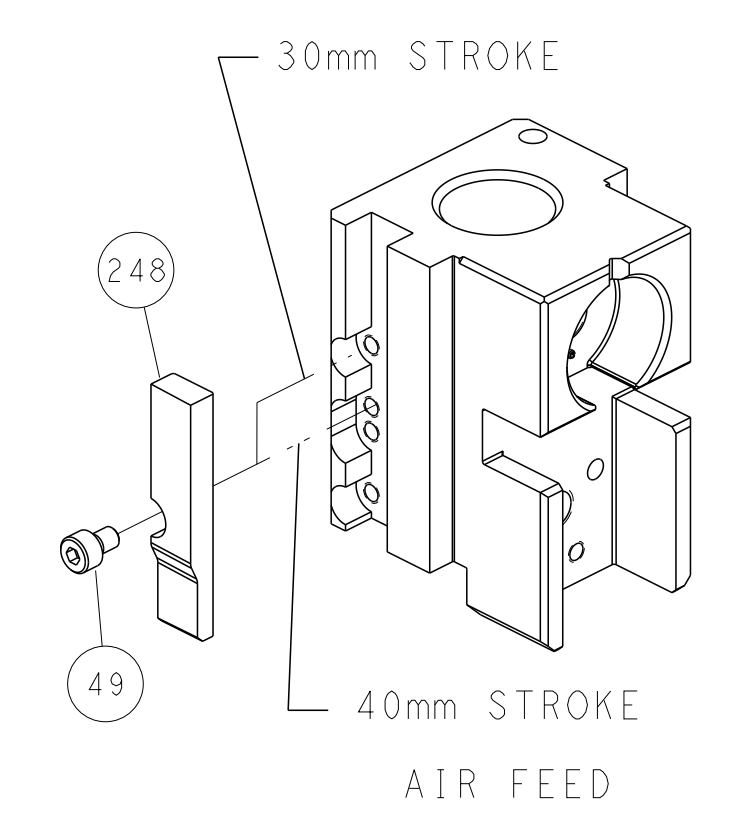


DETAIL A

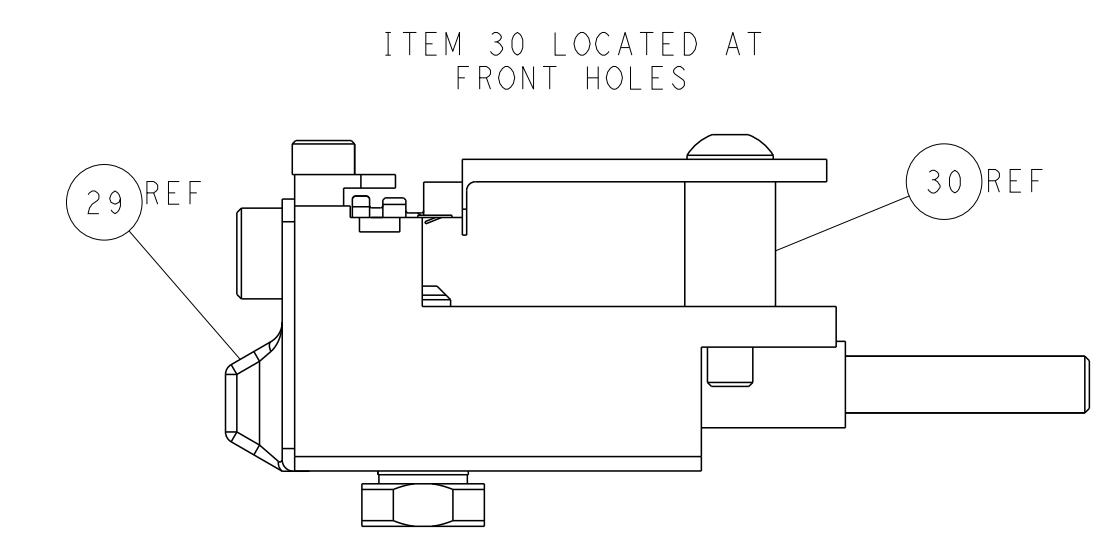
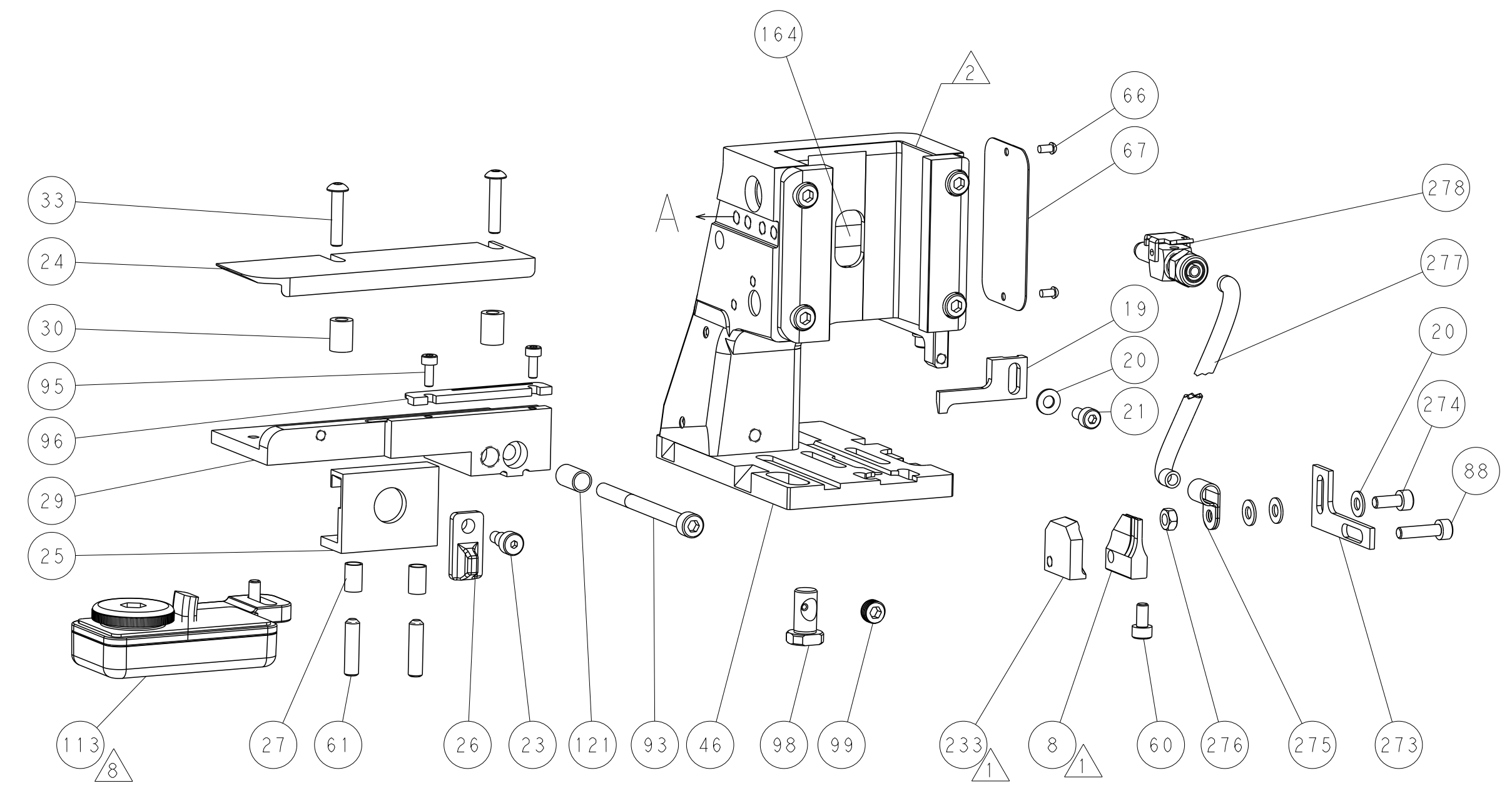


RAM SET-UP

CAM POSITION



AIR FEED



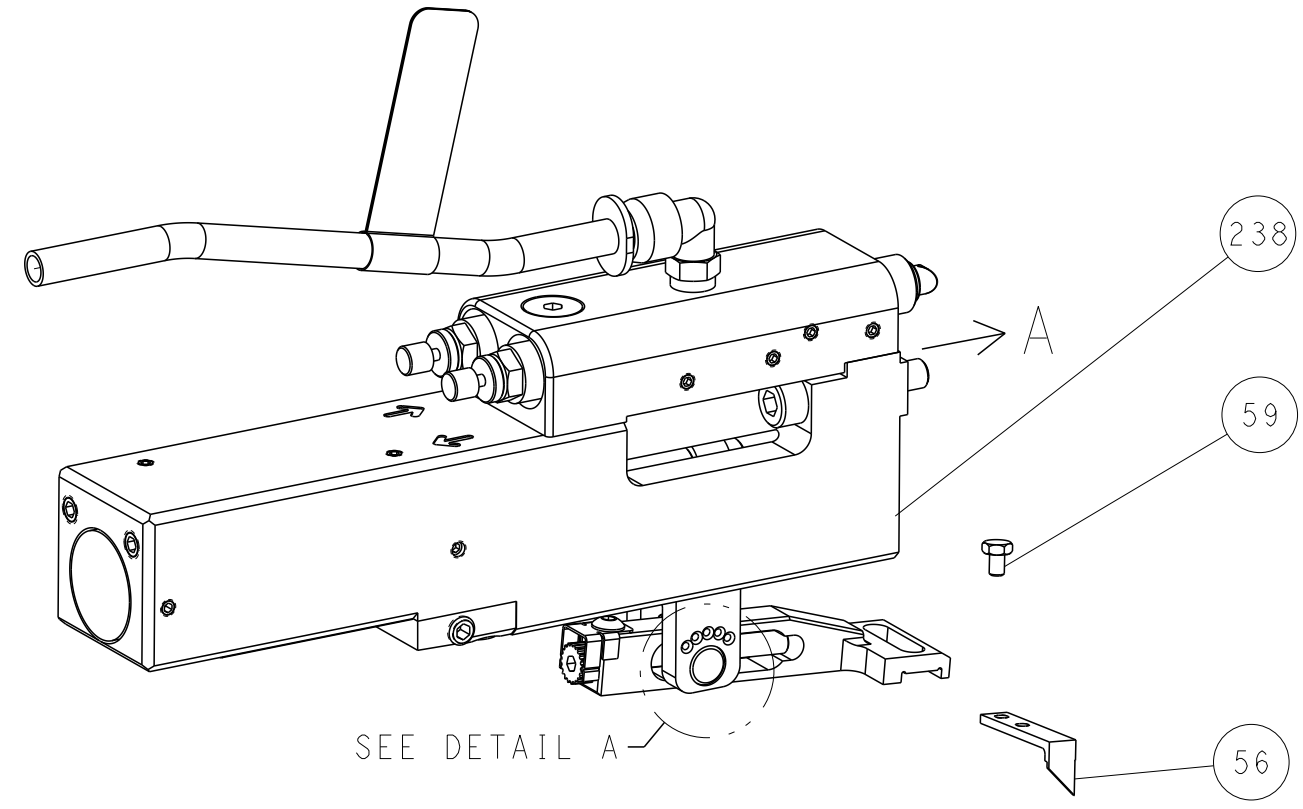
FEED TRACK POSITION
GUIDE BY TERMINAL BODY

ATLANTIC VERSION
 Shown on sheets 1 of 4 & 2 of 4
 (Pacific version shown on sheets 3 of 4 & 4 of 4)

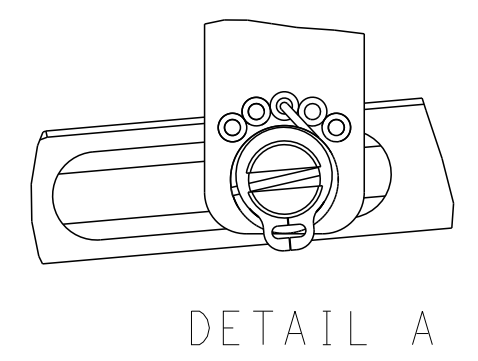
| | | | | | | | |
|-------------|---------|--|---------|------------------------|---------|---|--|
| DIMENSIONS: | | TOLERANCES UNLESS OTHERWISE SPECIFIED: | | DWN L. ZHANG 18DEC2012 | | TE Connectivity | |
| mm | 0 PLC ± | 1 PLC ± | 2 PLC ± | 3 PLC ± | 4 PLC ± | Harrisburg, PA 17105-3608 | |
| | ANGLES | FINISH | | CHK L. ZHANG 18DEC2012 | | NAME Ocean Side Feed Applicator | |
| MATERIAL | | | | APVD S. XI 18DEC2012 | | SIZE CAGE CODE DRAWING NO RESTRICTED TO | |
| | | | | PRODUCT SPEC | | A1 00779 C=2151434 | |
| | | | | APPLICATION SPEC | | Customer Accessible Production Drawing | |
| | | | | WEIGHT | | SCALE 1:2 SHEET 2 OF 4 REV E | |

| LOC | DIST | REVISIONS | | | | | |
|-----|------|-----------|-----|-------------|------|-----|------|
| A | 66 | P | LTM | DESCRIPTION | DATE | OWN | APVD |
| | | - | | SEE SHEET 1 | - | - | - |
| | | | | | | | |
| | | | | | | | |

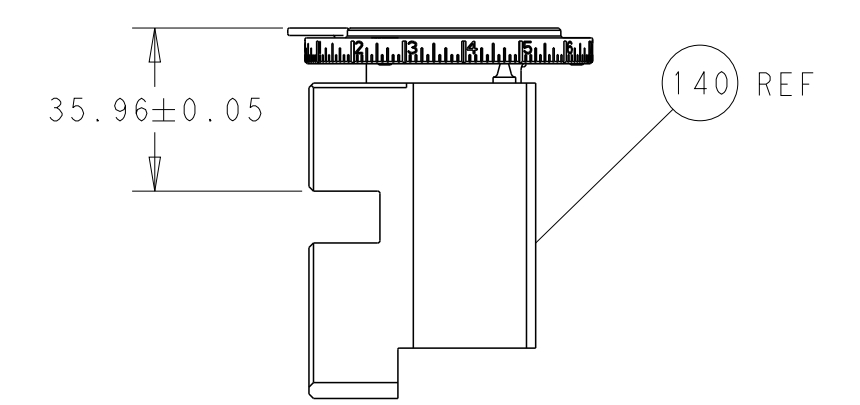
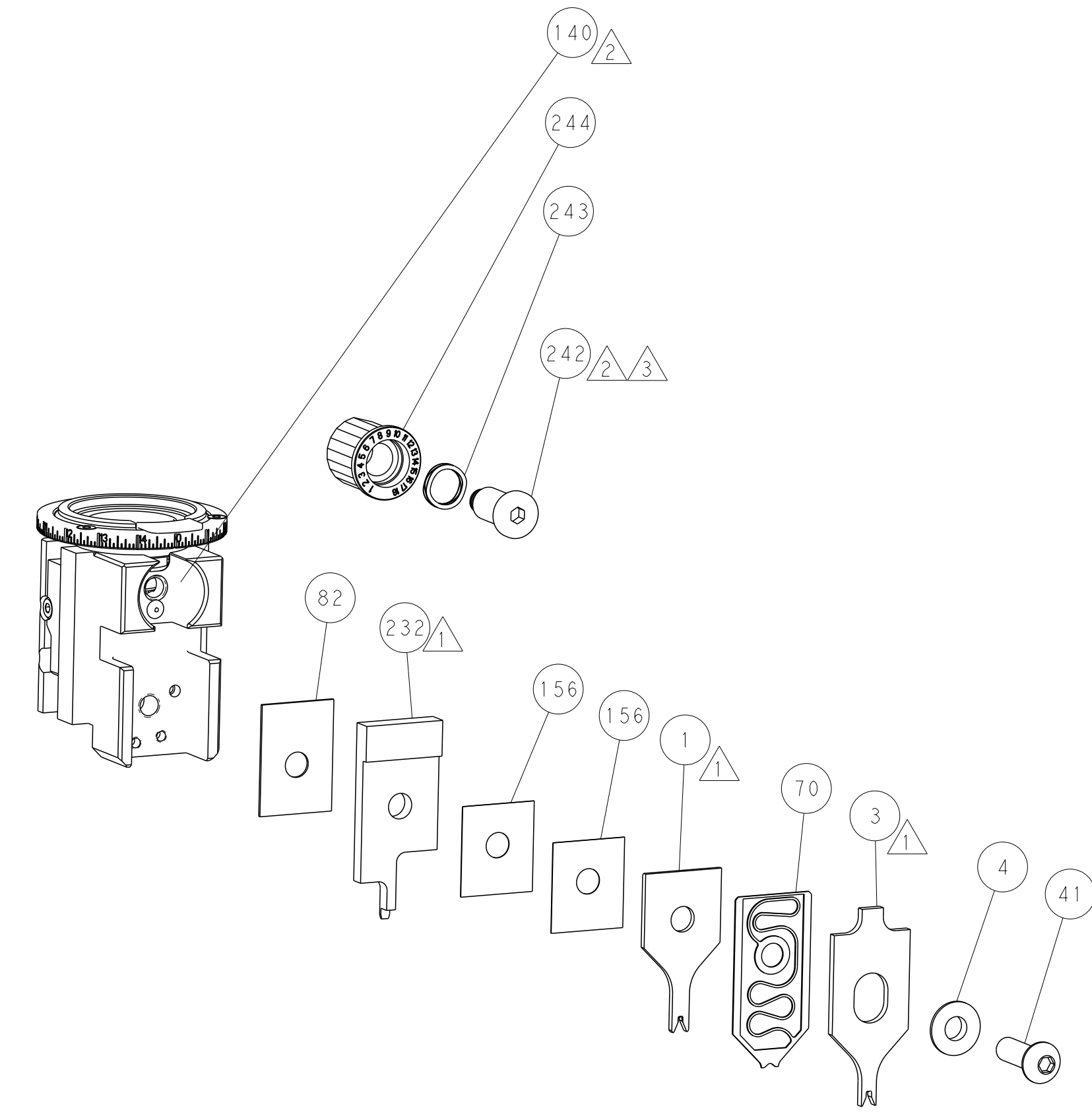
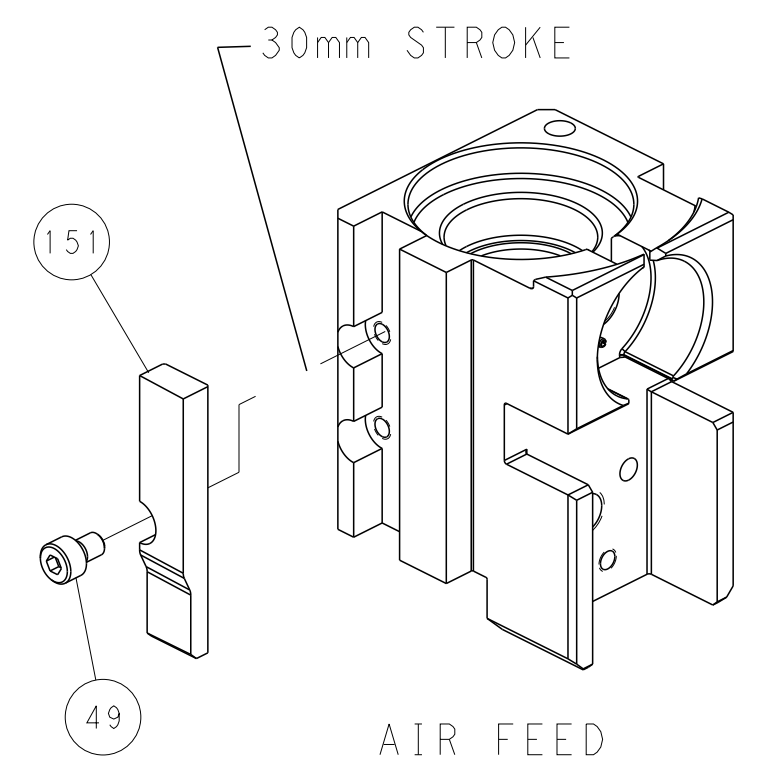
FEED TYPE PNEUMATIC



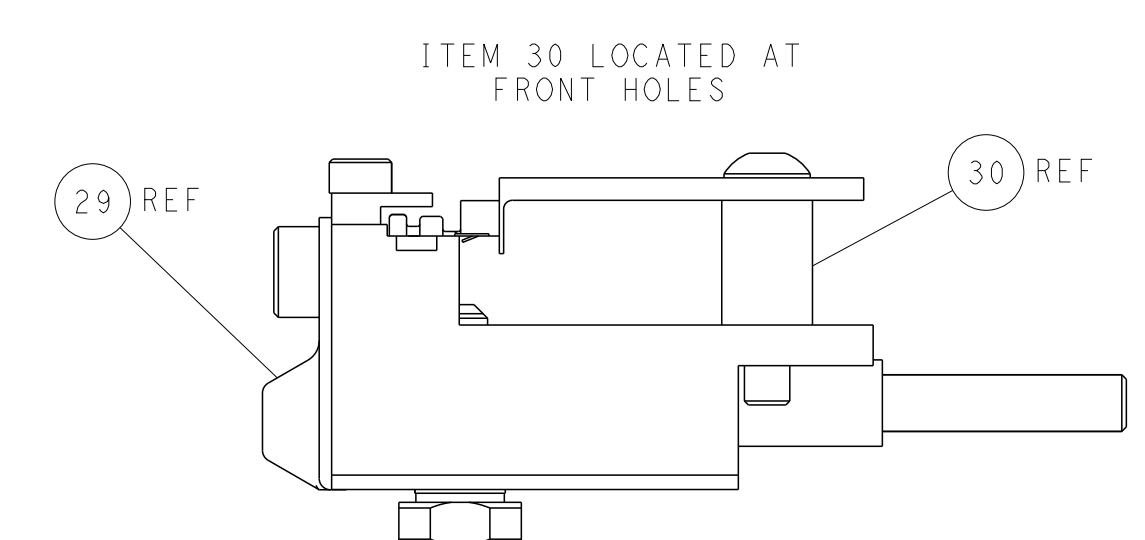
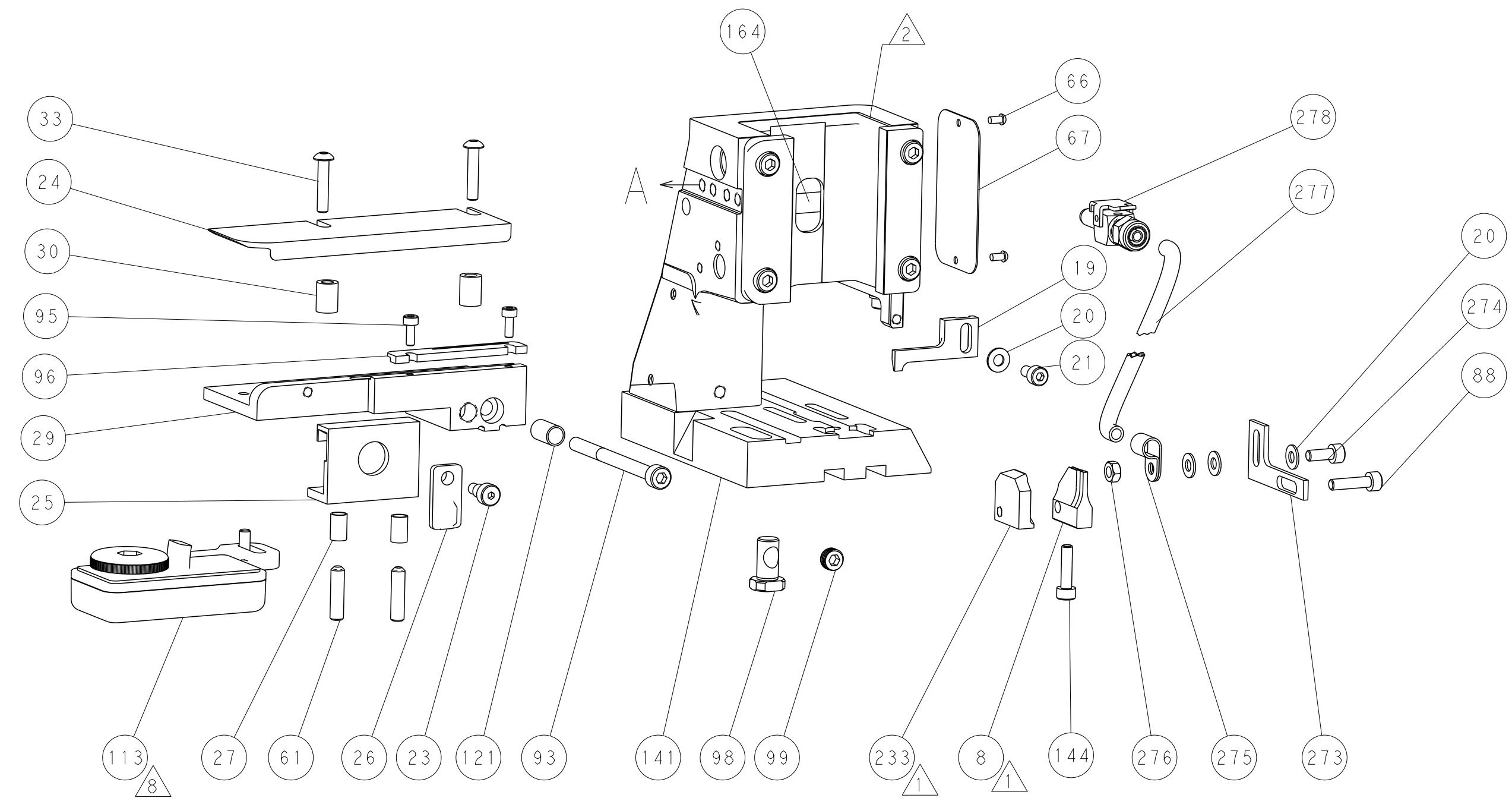
FEED SPRING SETTING POSITION (SHOWN FROM REAR SIDE)



CAM POSITION



RAM SET-UP



FEED TRACK POSITION
GUIDE BY TERMINAL BODY

PACIFIC VERSION
 Shown on sheets 3 of 4 & 4 of 4
 (Atlantic version shown on sheets 1 of 4 & 2 of 4)

| | | | |
|---|--|---|--|
| <small>THIS DRAWING IS UNPUBLISHED. RELEASED FOR PUBLICATION 20. COPYRIGHT 20 BY TYCO ELECTRONICS CORPORATION. ALL RIGHTS RESERVED.</small> | | DWN L. ZHANG 18DEC2012 CHK L. ZHANG 18DEC2012 S. XI 18DEC2012 APVD S. XI 18DEC2012 | TE Connectivity Harrisburg, PA 17105-3608 |
| DIMENSIONS: mm TOLERANCES UNLESS OTHERWISE SPECIFIED: 0 PLC ± 1 PLC ± 2 PLC ± 3 PLC ± 4 PLC ± ANGLES ± MATERIAL: - FINISH: - | | NAME: Ocean Side Feed Applicator APPLICATION SPEC: - PRODUCT SPEC: - WEIGHT: - SCALE: 1:2 | SIZE: A1 CAGE CODE: 00779 DRAWING NO: 2151434 SHEET 4 OF 4 REV E |