

Würth Elektronik eiSos GmbH & Co. KG

EMC & Inductive Solutions

Max-Eyth-Straße 1 · 74638 Waldenburg · Germany

Tel. +49 (0) 79 42 945-0 · Fax +49 (0) 79 42 945-400

eiSos@we-online.de · www.we-online.de



Product / Process Change Notification (PCN)

- Major change
 Minor change

PCN #:	PCN_WL-SMDC_20181201	Change Category:	<input type="checkbox"/> Equipment / Location
Affected Series:	WL-SMDC 150353FS74500 / 150353HS74500		<input type="checkbox"/> General Data
PCN Date:	August 31, 2018		<input type="checkbox"/> Material
Effective Date:	December 01, 2019		<input type="checkbox"/> Process
			<input checked="" type="checkbox"/> Product Design
			<input type="checkbox"/> Shipping / Packaging
			<input type="checkbox"/> Supplier

Contact:	Product Management	Data Sheet Change:	<input checked="" type="checkbox"/> Yes	<input type="checkbox"/> No
Phone:	+49 (0) 7942 - 945 5001			
Fax:	+49 (0) 7942 - 945 5179	Attachment:	<input type="checkbox"/> Yes	<input checked="" type="checkbox"/> No
E-Mail:	pcn.eisos@we-online.com			

DESCRIPTION AND PURPOSE OF CHANGE:

In order to meet current market demands, Würth Elektronik will improve the chip of the products and provide higher optical power output.

All products with date code 2018-09-30 or later, will be affected by this change.

There will be no change in form, fit, quality or reliability of the product.

DETAIL OF CHANGE:

The chip of the products will be upgraded to the latest generation and the power output of the products will change accordingly:

Optical parameter	150353HS74500		150353FS74500	
	Before	After	Before	After
Φ_v minimum [mW]	240	360	180	280
Φ_v typical [mW]	330	400	240	330

Würth Elektronik eiSos GmbH & Co. KG

EMC & Inductive Solutions

Max-Eyth-Straße 1 · 74638 Waldenburg · Germany

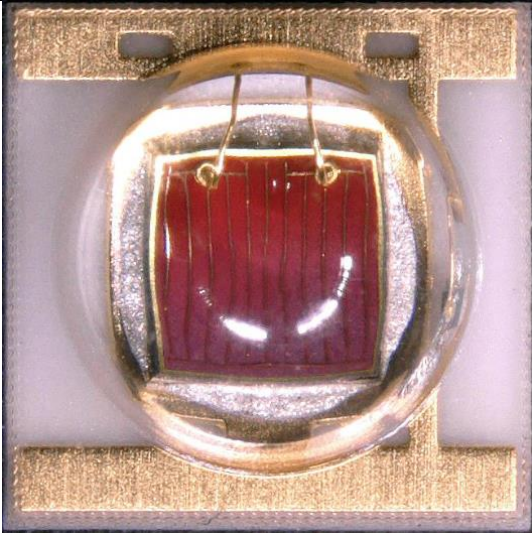
Tel. +49 (0) 79 42 945-0 · Fax +49 (0) 79 42 945-400

eiSos@we-online.de · www.we-online.de



Following are pictures of the old and the new products

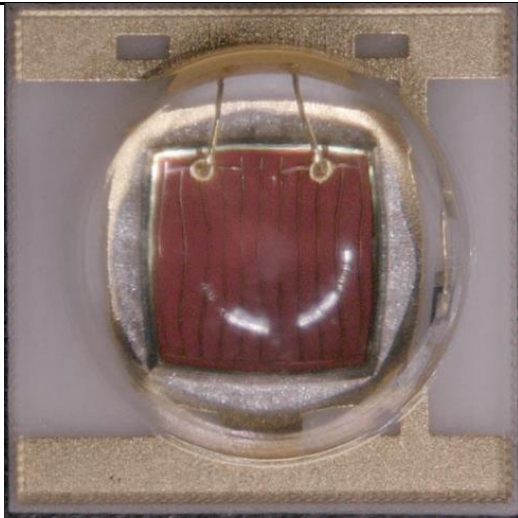
150353HS74500 Old Component



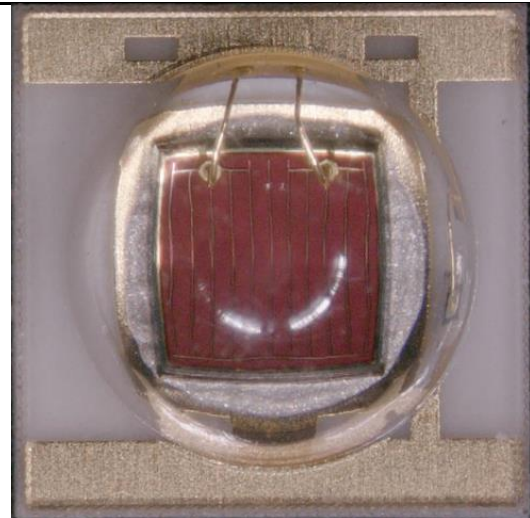
150353HS74500 New component



150353FS74500 Old Component



150353FS74500 New component



RELIABILITY / QUALIFICATION SUMMARY:

Process / Product approval is according to internal requirements released by the Total Quality Department and the Product Management Department.