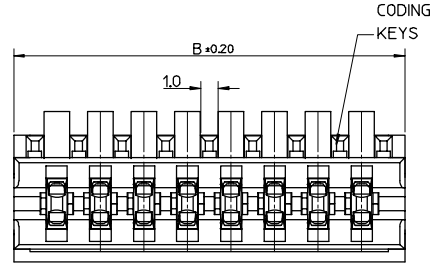
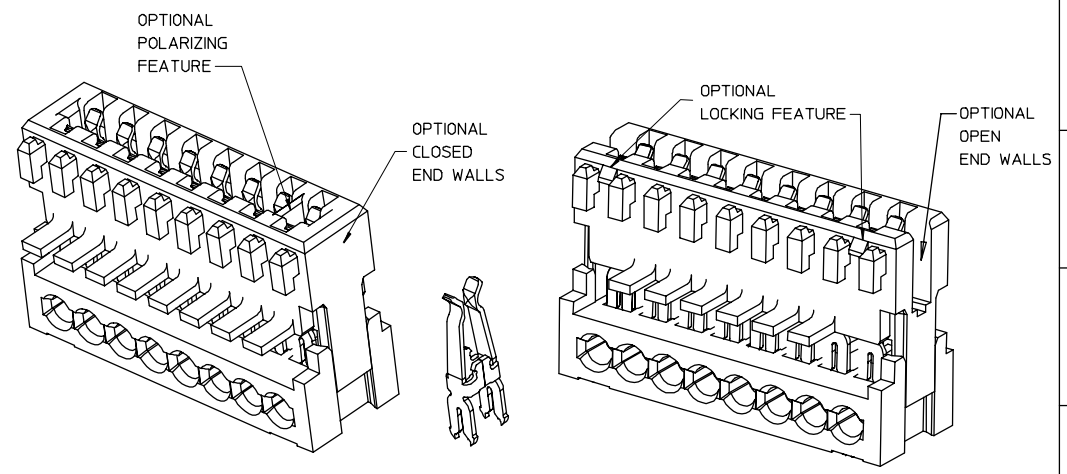


TERMINATED PART



- NOTES:
 1. REFER TO PRODUCT SPECIFICATION: PS-99020-0040
 2. MATERIAL: HOUSING- POLYESTER (PBT) 10% GLASS FILLED, UL94-V0, COLOUR: BEIGE
 TERMINAL: PHOSPHOR BRONZE 0.30 REF THK - PLATING HOT TIN DIP

CCT	*A*	*B*	PACKAGING PER TRAY	PACKAGING PER BOX
3	5.0	9.875	1200	3600
4	7.5	12.375	900	2700
5	10.0	14.875	750	2250
6	12.5	17.375	600	1800
7	15.0	19.875	600	1800
8	17.5	22.375	450	1350
9	20.0	24.875	450	1350
10	22.5	27.375	450	1350
11	25.0	29.875	300	900
12	27.5	32.375	300	900
13	30.0	34.875	300	900
14	32.5	37.375	300	900
15	35.0	39.875	300	900
16	37.5	42.375	150	450
17	40.0	44.875	150	450
18	42.5	47.375	150	450
19	45.0	49.875	150	450
20	47.5	52.375	150	450



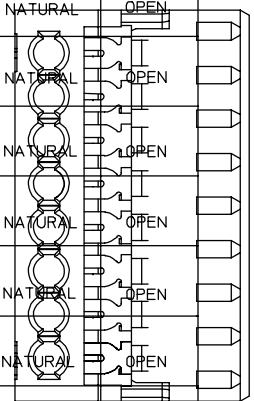
VERSION WITH OPTIONAL CLOSED END WALLS AND POLARIZING RIB

VERSION WITH OPTIONAL OPEN END WALLS & LOCKING FEATURE

SEE SUBSEQUENT SHEETS FOR RELEVANT PART NUMBERS.

REVISION UP-DATE NEW P/N ADDED TO SH13 1350 2000 WAS 1350000 EC NO: E2003-0425 DRWN: PSHEAHAN 02/11/04 CHKD: APPR:	QUALITY SYMBOLS	GENERAL TOLERANCES (UNLESS SPECIFIED)	SCALE 5:1	DESIGN UNITS METRIC	THIRD ANGLE PROJECTION	REVISE ON CAD ONLY	
	▼ -0 ∇ C=0	mm	INCH	DIMENSION STYLE MM ONLY		TITLE	
		4 PLACES ± --- ± ---	3 PLACES ± 0.05 ± ---	2 PLACES ± 0.10 ± ---	1 PLACE ± 0.2 ± ---	ANGULAR ±1/2°	APPLI-MATE 2.5 FEMALE
		DRAFT WHERE APPLICABLE MUST REMAIN WITHIN DIMENSIONS				APPROVED BY MWLWHITE 1999/01/13	DATE 1999/01/13
REV	DESCRIPTION	THIS DRAWING CONTAINS INFORMATION THAT IS PROPRIETARY TO MOLEX INCORPORATED AND SHOULD NOT BE USED WITHOUT WRITTEN PERMISSION		DOCUMENT NO. SD-90871-001	SHEET NO. 1 OF 5	A2	

MOLEX PART NO:	CIRCUIT SIZE	POSITION KEYS	CONFIGURATION	REF	LOCKING DEVICE	POLARIZING RIB	CONTACT PITCH	COLOUR	END WALLS
90871-0001	3	ALL		K00	NO	NO	2.5	NATURAL	OPEN
90871-0013	3	a		K30	NO	NO	2.5	NATURAL	OPEN
90871-0014	3	b		K31	NO	NO	2.5	NATURAL	OPEN
90871-0015	3	c		K32	NO	NO	2.5	NATURAL	OPEN
90871-0016	3	d		K33	NO	NO	2.5	NATURAL	OPEN
90871-0017	3	b d		K34	NO	NO	2.5	NATURAL	OPEN
90871-0018	3	a c		K35	NO	NO	2.5	NATURAL	OPEN
90871-0019	3	a d		K36	NO	NO	2.5	NATURAL	OPEN
90871-0020	3	a b		K37	NO	NO	2.5	NATURAL	OPEN
90871-0021	3	b c		K38	NO	NO	2.5	NATURAL	OPEN
90871-0022	3	c d		K39	NO	NO	2.5	NATURAL	OPEN
90871-0034	3	ALL		K00	NO	BETWEEN CKT1 & CKT2	2.5	NATURAL	OPEN
90871-0041	3	ALL		K00	NO	BETWEEN CKT2 & CKT3	2.5	NATURAL	OPEN

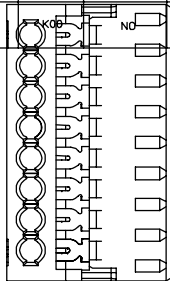


REVISION UP-DATE EC NO: E2003-0425 DRAWN: PSHEAHAN 02/11/04 CHKD: APPR:	QUALITY SYMBOLS	GENERAL TOLERANCES (UNLESS SPECIFIED)	SCALE 1:1	DESIGN UNITS METRIC	THIRD ANGLE PROJECTION	REVISE ON CAD ONLY	
	-0 C=0	mm	INCH	DIMENSION STYLE MM ONLY		TITLE	
		4 PLACES ± --- ± ---	3 PLACES ± 0.025 ± ---	DRAWN BY	DATE	APPLI-MATE 2.5 FEMALE	
		2 PLACES ± 0.10 ± ---	1 PLACE ± 0.2 ± ---	LKIERNAN	1999/01/13		
ANGULAR ±1/2°	DRAFT WHERE APPLICABLE MUST REMAIN WITHIN DIMENSIONS		CHECKED BY	DATE	MATERIAL NO.	DOCUMENT NO.	SHEET NO.
			PWHITE	1999/01/13	SEE-CHART	SD-90871-001	2 OF 5
THIS DRAWING CONTAINS INFORMATION THAT IS PROPRIETARY TO MOLEX INCORPORATED AND SHOULD NOT BE USED WITHOUT WRITTEN PERMISSION							

MOLEX PART NO:	CIRCUIT SIZE	POSITION KEYS	CONFIGURATION	REF	LOCKING DEVICE	POLARIZING RIB	CONTACT PITCH	COLOUR	END WALLS
90871-0501	4	ALL		K00	NO	NO	2.5	NATURAL	OPEN
90871-0027	4	d		K31	NO	NO	2.5	NATURAL	OPEN
90871-0028	4	a d		K33	NO	NO	2.5	NATURAL	OPEN
90871-0029	4	c e		K34	NO	NO	2.5	NATURAL	OPEN
90871-0030	4	a		K35	NO	NO	2.5	NATURAL	OPEN
90871-0538	4	b		K38	NO	NO	2.5	NATURAL	OPEN
90871-0530	4	b c		K30	NO	NO	2.5	NATURAL	OPEN
90871-0539	4	a b		K39	NO	NO	2.5	NATURAL	OPEN
90871-0540	4	d e		-	NO	NO	2.5	NATURAL	OPEN

MOLEX PART NO:	CIRCUIT SIZE	POSITION KEYS	CONFIGURATION	REF	LOCKING DEVICE	POLARIZING RIB	CONTACT PITCH	COLOUR	END WALLS
90871-1501	6	ALL		K00	NO	NO	2.5	NATURAL	OPEN
90871-0040	6	d f		K30	NO	NO	2.5	NATURAL	OPEN
90871-1502	6	NONE		-	NO	BETWEEN CKT3 & CKT4	2.5	NATURAL	OPEN
90871-1503	6	c e f g		K40	NO	NO	2.5	NATURAL	OPEN
90871-1504	6	a b c d e f g		-	NO	BETWEEN CKT2 & CKT3	2.5	NATURAL	CLOSED
90871-1505	6	a b c d e f g		-	NO	BETWEEN CKT2 & CKT3	2.5	NATURAL	CLOSED
90871-1506	6	a b f g		-	NO	NO	2.5	NATURAL	OPEN
90871-1507	6	e f		-	NO	NO	2.5	NATURAL	OPEN

MOLEX PART NO:	CIRCUIT SIZE	POSITION KEYS	CONFIGURATION	REF	LOCKING DEVICE	POLARIZING RIB	CONTACT PITCH	COLOUR	END WALLS
90871-1001	5	ALL		K00	NO	NO	2.5	NATURAL	OPEN
90871-0035	5	c d		K30	NO	NO	2.5	NATURAL	OPEN
90871-0036	5	a		K34	NO	NO	2.5	NATURAL	OPEN
90871-0037	5	b		K35	NO	NO	2.5	NATURAL	OPEN
90871-1002	5	NONE		-	NO	BETWEEN CKT3 & CKT4	2.5	NATURAL	OPEN
90871-1003	5	ALL		-	NO	BETWEEN CKT4 & CKT5	2.5	NATURAL	OPEN



MOLEX PART NO:	CIRCUIT SIZE	POSITION KEYS	CONFIGURATION	REF	LOCKING DEVICE	POLARIZING RIB	CONTACT PITCH	COLOUR	END WALLS
90871-2001	7	ALL		K00	NO	NO	2.5	NATURAL	OPEN
90871-0042	7	a		K30	NO	NO	2.5	NATURAL	OPEN
90871-2002	7	a b c d e f g h		-	NO	BETWEEN CKT2 & CKT3	2.5	NATURAL	OPEN
90871-2003	7	a b c d e f g h		-	NO	BETWEEN CKT2 & CKT3	2.5	NATURAL	CLOSED

MOLEX PART NO:	CIRCUIT SIZE	POSITION KEYS	CONFIGURATION	REF	LOCKING DEVICE	POLARIZING RIB	CONTACT PITCH	COLOUR	END WALLS
90871-2501	8	ALL		K00	NO	NO	2.5	NATURAL	OPEN
90871-0044	8	b c d h i		K30	NO	NO	2.5	NATURAL	OPEN
90871-2502	8	ALL		K00	NO	BETWEEN CKT3 & CKT4	2.5	NATURAL	OPEN

NEW PART NUMBERS ADDED 90871-0540-1506-1507. EC NO: E2003-0425 DRWN: PSHEAHAN 02/10/04 CHKD: APPR:	QUALITY SYMBOLS -0 -0.2 -0.5	GENERAL TOLERANCES (UNLESS SPECIFIED) mm INCH 4 PLACES ± --- ± --- 3 PLACES ± 0.25 ± --- 2 PLACES ± 0.10 ± --- 1 PLACE ± 0.2 ± --- ANGULAR ±1/2°	SCALE 1:1 DESIGN UNITS METRIC DIMENSION STYLE MM ONLY	THIRD ANGLE PROJECTION REVISE ON CAD ONLY
		DRAFT WHERE APPLICABLE MUST REMAIN WITHIN DIMENSIONS	DRAWN BY DATE LKIERNAN 1999/01/13 CHECKED BY DATE PWHITE 1999/01/13	TITLE APPLI-MATE 2.5 FEMALE
		APPROVED BY DATE MWILHITE 1999/01/13	MATERIAL NO. DOCUMENT NO. SEE-CHART SD-90871-001	SHEET NO. 3 OF 5
		THIS DRAWING CONTAINS INFORMATION THAT IS PROPRIETARY TO MOLEX INCORPORATED AND SHOULD NOT BE USED WITHOUT WRITTEN PERMISSION		

MOLEX PART NO:	CIRCUIT SIZE	POSITION KEYS	CONFIGURATION	REF	LOCKING DEVICE	POLARIZING RIB	CONTACT PITCH	COLOUR	END WALLS
90871-3001	9	ALL	□□□□□□□□ +++++ 123456789	K00	NO	NO	2.5	NATURAL	OPEN

MOLEX PART NO:	CIRCUIT SIZE	POSITION KEYS	CONFIGURATION	REF	LOCKING DEVICE	POLARIZING RIB	CONTACT PITCH	COLOUR	END WALLS
90871-5001	13	ALL	□□□□□□□□□□ +++++ 12345678910111213	K00	NO	NO	2.5	NATURAL	OPEN

MOLEX PART NO:	CIRCUIT SIZE	POSITION KEYS	CONFIGURATION	REF	LOCKING DEVICE	POLARIZING RIB	CONTACT PITCH	COLOUR	END WALLS
90871-3501	10	ALL	□□□□□□□□ +++++ 12345678910	K00	NO	NO	2.5	NATURAL	OPEN
90871-3502	10	abcdefghijkl	+++++ 12345678910 abcdefghijkl	-	NO	BETWEEN CKT2 & CKT3	2.5	NATURAL	CLOSED
90871-3503	10	abcdefghijkl	+++++ 12345678910 abcdefghijkl	-	NO	BETWEEN CKT2 & CKT3	2.5	NATURAL	CLOSED

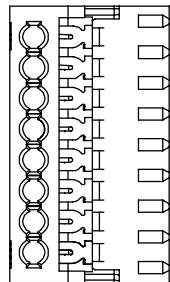
MOLEX PART NO:	CIRCUIT SIZE	POSITION KEYS	CONFIGURATION	REF	LOCKING DEVICE	POLARIZING RIB	CONTACT PITCH	COLOUR	END WALLS
90871-5501	14	ALL	□□□□□□□□□□ +++++ 1234567891011121314	K00	NO	NO	2.5	NATURAL	OPEN

MOLEX PART NO:	CIRCUIT SIZE	POSITION KEYS	CONFIGURATION	REF	LOCKING DEVICE	POLARIZING RIB	CONTACT PITCH	COLOUR	END WALLS
90871-4001	11	ALL	□□□□□□□□□□ +++++ 1234567891011	K00	NO	NO	2.5	NATURAL	OPEN

MOLEX PART NO:	CIRCUIT SIZE	POSITION KEYS	CONFIGURATION	REF	LOCKING DEVICE	POLARIZING RIB	CONTACT PITCH	COLOUR	END WALLS
90871-6001	15	ALL	□□□□□□□□□□□□ +++++ 123456789101112131415	K00	NO	NO	2.5	NATURAL	OPEN
90871-6002	15	adglnop	□□□□□□□□□□□□ +++++ 123456789101112131415	K01	NO	BETWEEN CKT14 & CKT15	2.5	NATURAL	CLOSED

MOLEX PART NO:	CIRCUIT SIZE	POSITION KEYS	CONFIGURATION	REF	LOCKING DEVICE	POLARIZING RIB	CONTACT PITCH	COLOUR	END WALLS
90871-6501	16	ALL	□□□□□□□□□□□□□□ +++++ 12345678910111213141516	K00	NO	NO	2.5	NATURAL	OPEN

MOLEX PART NO:	CIRCUIT SIZE	POSITION KEYS	CONFIGURATION	REF	LOCKING DEVICE	POLARIZING RIB	CONTACT PITCH	COLOUR	END WALLS
90871-4501	12	ALL	□□□□□□□□□□□□ +++++ 123456789101112	K00	NO	NO	2.5	NATURAL	OPEN



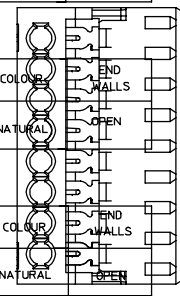
REVISION UP-DATE EC NO: E2003-0625 DRWN: PSHEAHAN 02/11/04 CHKD: APPR: REV	QUALITY SYMBOLS ▼ - 0 ∇ - 0	GENERAL TOLERANCES (UNLESS SPECIFIED) mm INCH 4 PLACES ± --- ± --- 3 PLACES ± 0.025 ± --- 2 PLACES ± 0.10 ± --- 1 PLACE ± 0.2 ± --- ANGULAR ± 1/2°	SCALE 1:1 DESIGN UNITS METRIC DIMENSION STYLE MM ONLY	THIRD ANGLE PROJECTION REVISE ON CAD ONLY	TITLE APPLI-MATE 2.5 FEMALE
	DRAFT WHERE APPLICABLE MUST REMAIN WITHIN DIMENSIONS		DRAWN BY DATE LKIERNAN 1999/01/13	CHECKED BY DATE PWHITE 1999/01/13	MATERIAL NO. DOCUMENT NO. SHEET NO. SEE-CHART SD-90871-001 4 OF 5
	APPROVED BY DATE MWILHITE 1999/01/13		MOLEX INCORPORATED		
	THIS DRAWING CONTAINS INFORMATION THAT IS PROPRIETARY TO MOLEX INCORPORATED AND SHOULD NOT BE USED WITHOUT WRITTEN PERMISSION				

MOLEX PART NO:	CIRCUIT SIZE	POSITION KEYS	CONFIGURATION	REF	LOCKING DEVICE	POLARIZING RIB	CONTACT PITCH	COLOUR	END WALLS
90871-7001	17	ALL	□□□□□□□□□□□□□□□□ +++++ 1 2 3 4 5 6 7 8 9 10 11 12 13 14 15 16 17	K00	NO	NO	2.5	NATURAL	OPEN

MOLEX PART NO:	CIRCUIT SIZE	POSITION KEYS	CONFIGURATION	REF	LOCKING DEVICE	POLARIZING RIB	CONTACT PITCH	COLOUR	END WALLS
90871-7501	18	ALL	□□□□□□□□□□□□□□□□ +++++ 1 2 3 4 5 6 7 8 9 10 11 12 13 14 15 16 17 18	K00	NO	NO	2.5	NATURAL	OPEN

MOLEX PART NO:	CIRCUIT SIZE	POSITION KEYS	CONFIGURATION	REF	LOCKING DEVICE	POLARIZING RIB	CONTACT PITCH	COLOUR	END WALLS
90871-8001	19	ALL	□□□□□□□□□□□□□□□□ +++++ 1 2 3 4 5 6 7 8 9 10 11 12 13 14 15 16 17 18 19	K00	NO	NO	2.5	NATURAL	OPEN

MOLEX PART NO:	CIRCUIT SIZE	POSITION KEYS	CONFIGURATION	REF	LOCKING DEVICE	POLARIZING RIB	CONTACT PITCH	COLOUR	END WALLS
90871-8501	20	ALL	□□□□□□□□□□□□□□□□ +++++ 1 2 3 4 5 6 7 8 9 10 11 12 13 14 15 16 17 18 19 20	K00	NO	NO	2.5	NATURAL	OPEN



REVISION UP-DATE EC NO: E2003-0425 DRWN: PSHEAHAN 02/11/04 CHKD: APPR:	QUALITY SYMBOLS	GENERAL TOLERANCES (UNLESS SPECIFIED)	SCALE 1:1	DESIGN UNITS METRIC	THIRD ANGLE PROJECTION	REVISE ON CAD ONLY
	DESCRIPTION -0 -0	DIMENSION STYLE MM ONLY	DIMENSION STYLE MM ONLY	TITLE APPLI-MATE 2.5 FEMALE		
		4 PLACES ± --- ± --- 3 PLACES ± 0.025 ± --- 2 PLACES ± 0.10 ± --- 1 PLACE ± 0.2 ± ---	DRAWN BY DATE LKIERNAN 1999/01/13	MATERIAL NO. DOCUMENT NO. SHEET NO. SEE-CHART SD-90871-001 5 OF 5		
		ANGULAR ± 1/2°	CHECKED BY DATE PWHITE 1999/01/13	MOLEX INCORPORATED APPROVED BY DATE MWILHITE 1999/01/13		
DRAFT WHERE APPLICABLE MUST REMAIN WITHIN DIMENSIONS		THIS DRAWING CONTAINS INFORMATION THAT IS PROPRIETARY TO MOLEX INCORPORATED AND SHOULD NOT BE USED WITHOUT WRITTEN PERMISSION				