



Product Change Notification

10512888

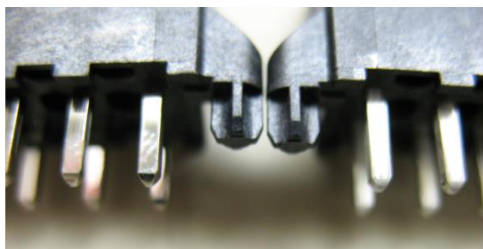
To: All active customers
From: Christian Slinkman
Cathy Maly
Niki Taylor
Date: August 1st, 2011

Part Numbers Affected: See Attached Page

Product Description:

Changing selected Mini-Fit® and KK® Product that were 1) Bright Tin plated over Copper to Matte Tin over Nickel and 2) Bright Tin over Nickel to Matte Tin plated over

Product Image:



Matte Tin

Bright Tin

Part numbers to remain the same; this will be a running change

Change Effective Date: Nov 1st, 2011

For further information please contact your Molex local sales representative.

GCN Change special note:

Parts on attached list, which are currently plated in either Bright Tin Over Copper or Bright Tin Over Nickel, will be changed to Matte Tin/Reflowed Matte Tin Over Nickel. This will be a running change, so the part numbers will remain the same and parts shipped after Nov 1st, 2011 will begin to transition to Matte Tin/Reflowed Matte Tin Over Nickel from Bright Tin over Copper or Bright Tin Over Nickel. All parts shipped prior to Oct 31st, 2011, will be shipped using the existing plating.

Molex, Inc.
2222 Wellington Court
Lisle, IL 60532
TEL: 630-969-4747

www.molex.com