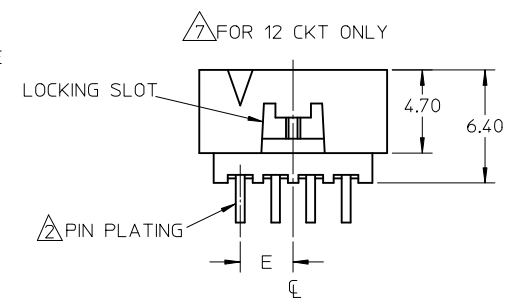
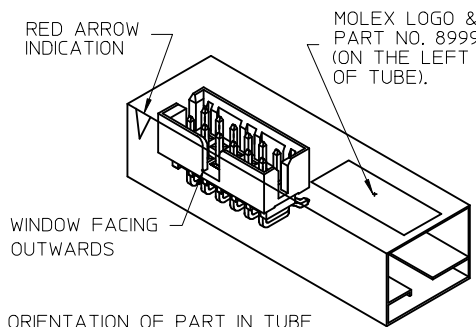
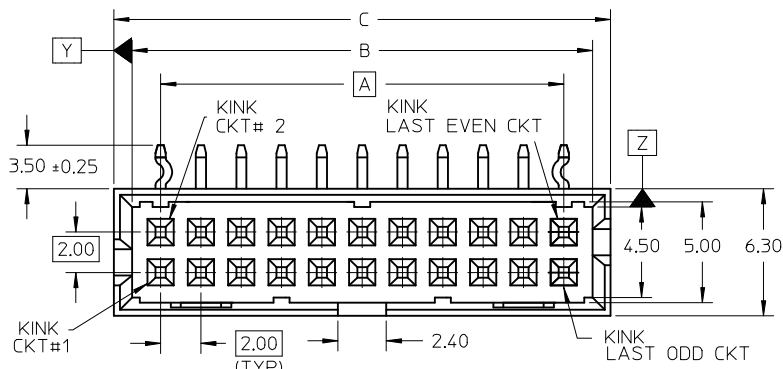
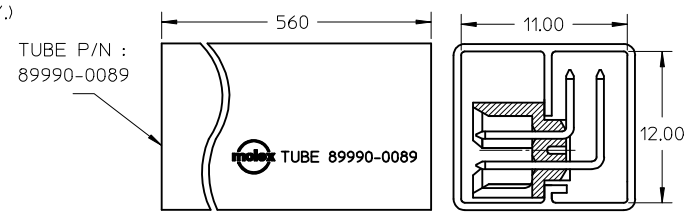
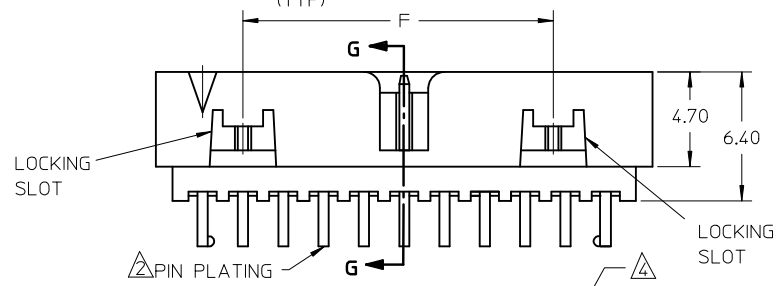


10 9 8 7 6 5 4 3 2 1

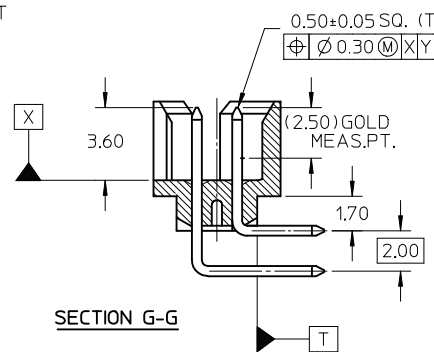
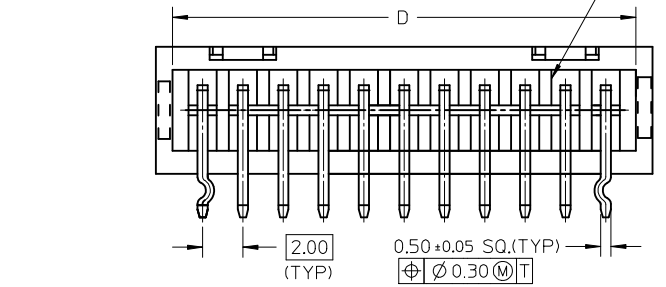
PART NO.	CKT SIZE	KINK CKT	DIMENSION					
			A	B	C	D	E	F
87833-1260	12	1, 2, 11 & 12	10.00	12.85	14.65	13.00	5.00	---
87833-1660	16	1, 2, 15 & 16	14.00	16.85	18.65	17.00	---	10.00



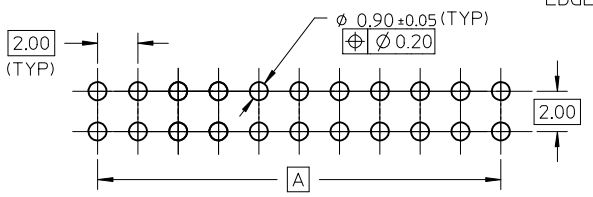
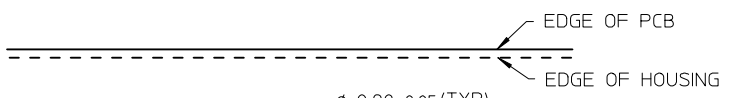
REF: ORIENTATION OF PART IN TUBE.
(FOR THE REFERENCE OF PART/TUBE ASSEMBLY.)



REF: ORIENTATION OF PART IN TUBE.



- NOTES:
- MATERIAL :
HOUSING : 30% G.F., NYLON 46, UL94V-0, COLOR BLACK.
PIN : 0.50MM SQ. PHOSPHOR BRONZE.
 - PLATING :
0.38um/15uin GOLD IN CONTACT AREA AND 1.88um/75uin MIN.TIN IN SOLDER TAIL AREA OVER 1.27um/50uin MIN. NICKEL OVERALL.
 - PRODUCT SPECIFICATION PS-87831-027 APPLIES.
 - LINKWAYS VARIES FROM PART TO PART BECAUSE OF DIFFERENT MOLD.
 - RECOMMENDED PCB THICKNESS : 1.60±0.10 MM.
 - PARTS ARE TO BE PACKED IN TUBE WITH MOISTURE BARRIER BAG.
 - 12 CKT HAS ONE LOCKING SLOT.



RECOMMENDED PCB PATTERN

ADD MOIST BAG NOTE EC NO: S2007-0931 DRAWN:GEMEARLY 2007/05/30 CHKD:SKANG 2007/06/01 APPR:MLONG 2007/06/01	QUALITY SYMBOLS ▽=0 ∇=0	GENERAL TOLERANCES (UNLESS SPECIFIED)		DIMENSION STYLE MM ONLY		SCALE NTS	DESIGN UNITS METRIC	THIRD ANGLE PROJECTION		
		mm	INCH	DRAWN BY BOKOK	DATE 2004/10/04	TITLE MGRID SHROUDED HEADER W/SLOT/STANDOFF AND KINKED SOLDER TAIL, R/A				
		4 PLACES ± --- ± ---	3 PLACES ± --- ± ---	CHECKED BY PTL IM	DATE 2004/10/14	MOLEX INCORPORATED				
		2 PLACES ± 0.2 ± ---	1 PLACE ± --- ± ---	APPROVED BY SCLOW	DATE 2004/10/14	DOCUMENT NO. SD-87833-039				
A1	REV	DRAFT WHERE APPLICABLE MUST REMAIN WITHIN DIMENSIONS		SEE TABLE		SHEET NO. 1 OF 1		THIS DRAWING CONTAINS INFORMATION THAT IS PROPRIETARY TO MOLEX INCORPORATED AND SHOULD NOT BE USED WITHOUT WRITTEN PERMISSION		

9 8 7 6 5 4 3 2 1