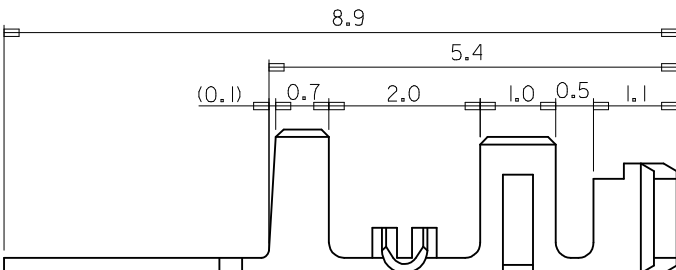


- NOTES :
- ①. MATERIAL: SEE TABLE
 - ②. FINISHES:
 TIN(Sn) THICKNESS = 3.0µm MINIMUM
 NICKEL(Ni) UNDERPLATE THICKNESS= 1~3µm
 - 3. PRODUCT SPECIFICATION: PS-35021-001
 - 4. PACKAGING SPECIFICATION: PK-35021-001
 - 3. MATES WITH(USED HOUSING): 35022-00**/35023-00**/68418-**00
 - 4. THIS PRODUCT IS LEAD FREE OF 35021-**10
 - ③④ INDICATION ∇ FORMED IN MANUFACTURING IS TO IMPROVE THE DIMENSION AND FUNCTION OF THE PRODUCT. THAT SHOULD BE SEEN OR NOT PER LOT OF STRIP. PLEASE USE IT AS THE REFERENCE.

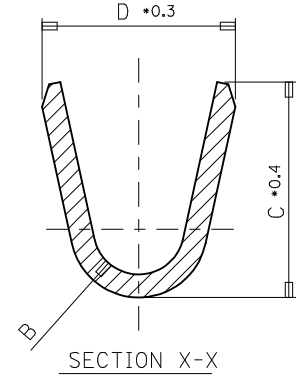
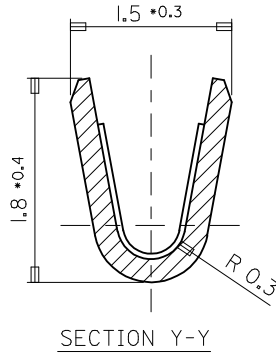
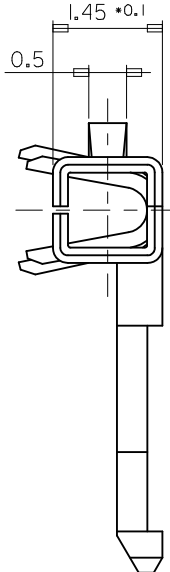
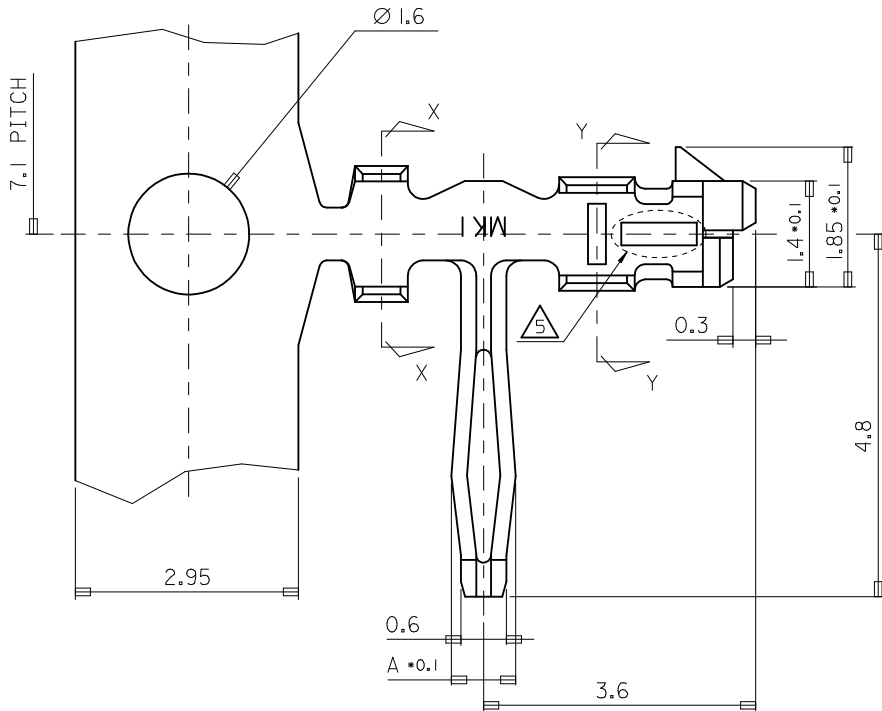


[TABLE]

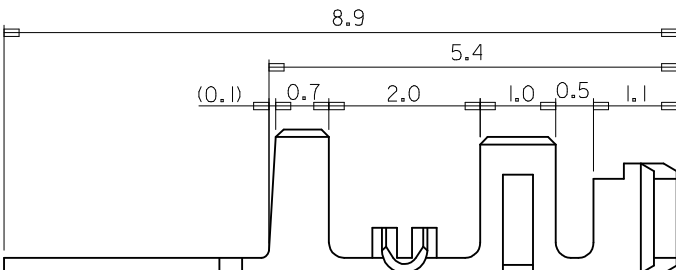
POST-PLATED	PHOS. BRON.	AWG #24-#30 (INS. DIA: Ø 1.5 MAX.)	1.8	1.9	R0.4	0.85	35021I360	35021-1360
POST-PLATED	PHOS. BRON.	AWG #22-#28 (INS. DIA: Ø1.9 MAX.)	2.5	2.5	R0.7	1.05	35021I160	35021-1160
PLATING	MATERIAL	WIRE RANGE	D	C	B	A	MAT'L NO.	ENG NO.

LEAD FREE

REVISED EC NO: KOR2017-0052 DRWN: SCHONG03 CHKD: SHCHU APPR: YSK1M02 2017/05/17 2017/05/17 2017/05/18	QUALITY SYMBOLS	GENERAL TOLERANCES (UNLESS SPECIFIED)	DIMENSION STYLE	SCALE	DESIGN UNITS	THIRD ANGLE PROJECTION	
	$\nabla=0$ $\square=0$	mm INCH 4 PLACES ± --- ± --- 3 PLACES ± --- ± --- 2 PLACES ± 0.30 ± --- 1 PLACE ± 0.30 ± --- 0 PLACE ± --- ± ---	MM ONLY	15:1	METRIC		
		ANGULAR ± 1 °	DRAWN BY	DATE	TITLE		
		DRAFT WHERE APPLICABLE MUST REMAIN WITHIN DIMENSIONS	HSSHIN 2004/09/30 CHECKED BY JKOH 2004/09/30 APPROVED BY CWLEE 2004/09/30		R/A B-IN TERMINAL -LEAD FREE-		
		SEE TABLE			molex SD-35021-002		SHEET NO. 1 OF 1
			SIZE A3	THIS DRAWING CONTAINS INFORMATION THAT IS PROPRIETARY TO MOLEX INCORPORATED AND SHOULD NOT BE USED WITHOUT WRITTEN PERMISSION			



- NOTES :
- ①. MATERIAL: SEE TABLE
 - ②. FINISHES:
 TIN(Sn) THICKNESS = 3.0µm MINIMUM
 NICKEL(Ni) UNDERPLATE THICKNESS= 1~3µm
 - 3. PRODUCT SPECIFICATION: PS-35021-001
 - 4. PACKAGING SPECIFICATION: PK-35021-001
 - 3. MATES WITH(USED HOUSING): 35022-00**/35023-00**/68418-**00
 - 4. THIS PRODUCT IS LEAD FREE OF 35021-**10
 - ③④ INDICATION ∇ FORMED IN MANUFACTURING IS TO IMPROVE THE DIMENSION AND FUNCTION OF THE PRODUCT. THAT SHOULD BE SEEN OR NOT PER LOT OF STRIP. PLEASE USE IT AS THE REFERENCE.



[TABLE]

POST-PLATED	PHOS. BRON.	AWG #24-#30 (INS. DIA: Ø 1.5 MAX.)	1.8	1.9	R0.4	0.85	35021I360	35021-1360
POST-PLATED	PHOS. BRON.	AWG #22-#28 (INS. DIA: Ø 1.9 MAX.)	2.5	2.5	R0.7	1.05	35021I160	35021-1160
PLATING	MATERIAL	WIRE RANGE	D	C	B	A	MAT'L NO.	ENG NO.

LEAD FREE

REVISED
 EC NO: KOR2017-0052
 DRWN: SCHONG03 2017/05/17
 CHKD: SHCHU 2017/05/17
 APPR: YSK1M02 2017/05/18

QUALITY SYMBOLS
 ∇ = 0
 \square = 0

GENERAL TOLERANCES (UNLESS SPECIFIED)

	mm	INCH
4 PLACES	± ---	± ---
3 PLACES	± ---	± ---
2 PLACES	± 0.30	± ---
1 PLACE	± 0.30	± ---
0 PLACE	± ---	± ---

ANGULAR ± 1 °
 DRAFT WHERE APPLICABLE MUST REMAIN WITHIN DIMENSIONS

DIMENSION STYLE
MM ONLY

DRAWN BY: HSSHIN DATE: 2004/09/30
 CHECKED BY: JKOH DATE: 2004/09/30
 APPROVED BY: CWLEE DATE: 2004/09/30

MATERIAL NO. SEE TABLE
 SIZE A3

SCALE 15:1
 DESIGN UNITS METRIC
 THIRD ANGLE PROJECTION

TITLE R/A B-IN TERMINAL -LEAD FREE-

molex

DOCUMENT NO. SD-35021-002
 SHEET NO. 1 OF 1

THIS DRAWING CONTAINS INFORMATION THAT IS PROPRIETARY TO MOLEX INCORPORATED AND SHOULD NOT BE USED WITHOUT WRITTEN PERMISSION