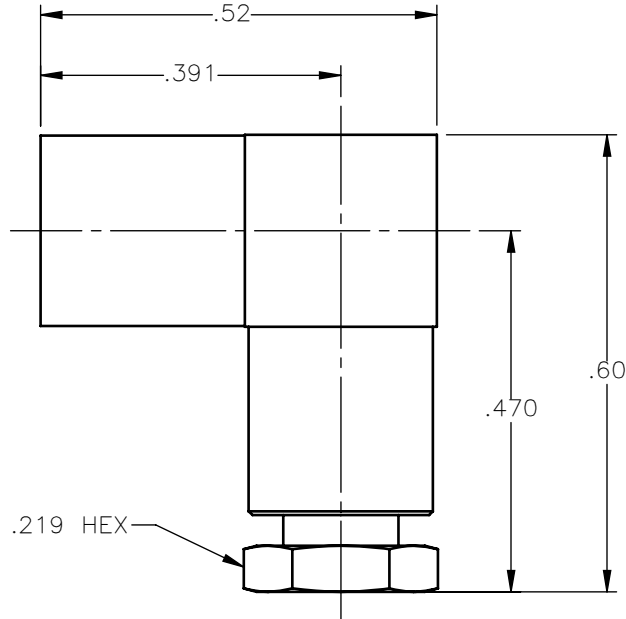


REVISIONS			
REV.	DESCRIPTION	DATE	APPROVED
A	INITIAL RELEASE	03/30/18	C.E.





NOTES:

MATERIALS:

1. INSULATORS = VIRGIN WHITE TEFLON PER ASTM D1710, GRADE 1, TYPE I, CLASS "B".
2. CONTACT & SPRING = BERYLLIUM COPPER PER ASTM B196, ALLOY C17300, TEMPER TD04.
3. ALL OTHER METAL PARTS = BRASS PER ASTM B16, ALLOY C36000, TEMPER H02.

FINISHES:

1. CONTACT = GOLD PLATE PER ASTM B488-11, TYPE II, 30µin MIN, GRADE C OVER
100 TO 200µin COPPER STRIKE PER AMS 2418.
2. ALL OTHER METAL PARTS = NICKEL PLATE PER AMS-QQ-N-290, CLASS 1, GRADE G, EXCEPT
100 TO 200µin THICK OVER 50 TO 100µin THICK COPPER PER AMS 2418.

UNLESS OTHERWISE SPECIFIED DIMENSIONS ARE IN INCHES TOLERANCES ON	DWN: C.E.	DATE: 03/30/18	 Property of Radiall This document cannot be reproduced or communicated to a third party without prior written permission of RADIALL.	
	CHKD: D.N.	DATE: 03/30/18		
DECIMAL	ANGLE	APVD: J.M.	DATE: 03/30/18	SMB RIGHT ANGLE FEMALE PLUG SOLDER-CLAMP TYPE FOR .086 S/R & SIMILAR CABLES
REFERENCE:	MATERIALS & FINISHES:	SIZE: A	FSCM NO.: 19505	
ORIGINATED: C.E. DATE: 03/30/18	SEE NOTES	DWG NO.: 2005-7541-010	REV: A	
		SCALE: 4:1	THIRD ANGLE PROJECTION	SHEET 1 OF 1

2005-7541-010