

# SPICE-Equivalent circuit model library

Table 1. Equivalent circuit data

Part Number	L ( $\mu$ H)	F <sub>res</sub> (MHz)	C1 (pF)	R1 ( $\Omega$ )	R2 Nominal DCR of winding ( $\Omega$ )
HCM1103-R12-R	0.12	199.4	5.31	362.12	0.0006
HCM1103-R36-R	0.36	117.7	5.08	934.88	0.0011
HCM1103-R47-R	0.47	103.6	5.02	1176.85	0.0015
HCM1103-R68-R	0.68	86.7	4.95	1618.85	0.0029
HCM1103-1R0-R	1	72.1	4.88	2258.40	0.0055
HCM1103-1R5-R	1.5	59.3	4.80	3204.94	0.0065
HCM1103-2R2-R	2.2	49.4	4.72	4460.82	0.0084
HCM1103-3R3-R	3.3	40.6	4.65	6330.44	0.0145
HCM1103-4R7-R	4.7	34.3	4.58	8590.59	0.0205
HCM1103-8R2-R	8.2	26.3	4.48	13889.81	0.035
HCM1103-100-R	10	23.9	4.45	16485.45	0.04
HCM1103-150-R	15	19.6	4.37	23394.86	0.059
HCM1103-220-R	22	16.3	4.31	32562.25	0.09

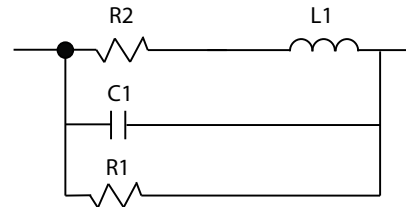


Figure 1. Equivalent circuit

## Disclaimer

The data provided is for reference and is intended for evaluation purposes only. Users should verify all intended results in the end application.

**Eaton**  
**Electronics Division**  
 1000 Eaton Boulevard  
 Cleveland, OH 44122  
 United States  
[www.eaton.com/electronics](http://www.eaton.com/electronics)

© 2018 Eaton  
 All Rights Reserved  
 Printed in USA  
 Publication No. HCM1103 Spice  
 April 2018