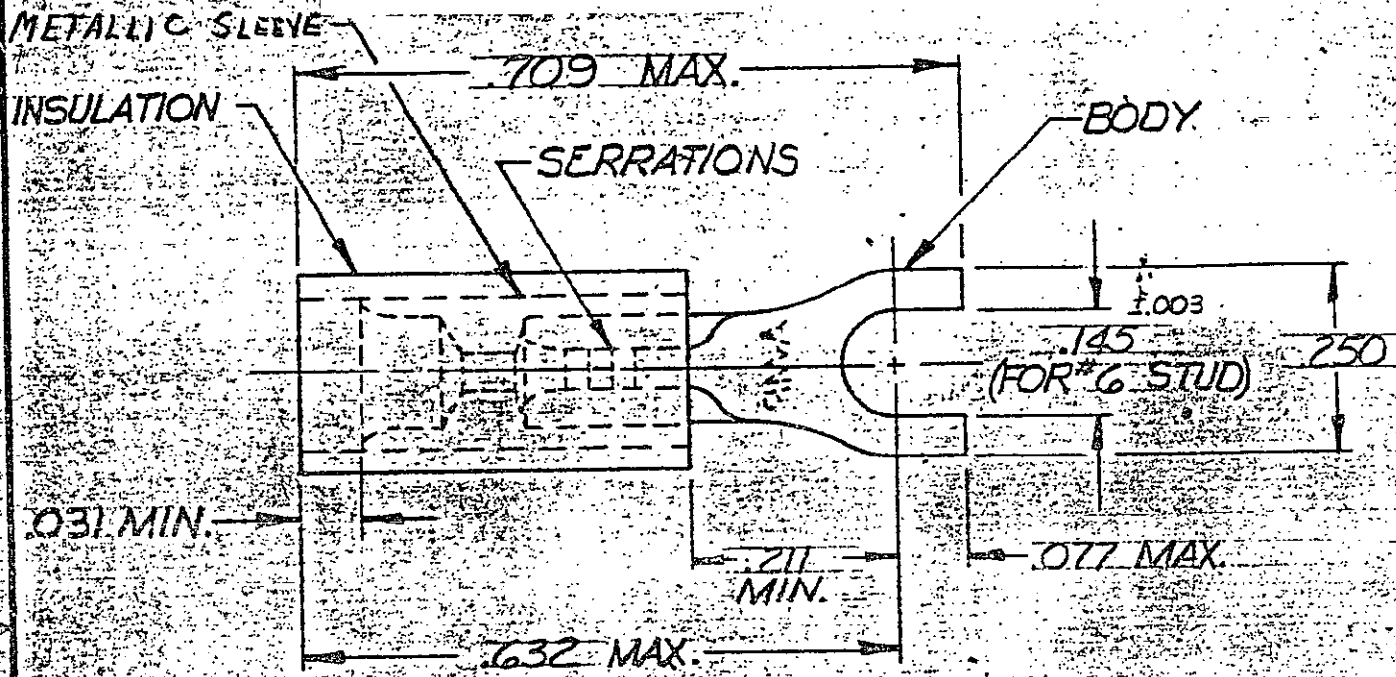


DRAWING MADE IN AMERICAN

© 1972 BY AMP INCORPORATED
 RIGHTS RESERVED
 COVERED BY
 PATENT

USE THIS DRAWING WITHOUT INCORPORATING
 OF AMP INCORPORATED

REV	DESCRIPTION	DATE	APPROV
0	NPS 72-0122	10/6/72	Same
A	.050-.105 WAS 050-082 PC-75.74 <small>REVISED TOOL NOTE</small>	10-9-75	10-9-75
B	REL FOR P-8986	11-14-79	11-14-79
C	INACTIVE -1 P-9381	1-30-82	1-30-82
D	OBSOLETE -1 G-2340	1/6/87	1/6/87
E	REV 10 G10-0094-98	2/1/99	2/1/99



TONGUE MATERIAL THK. = .027
 FOR .050 TO .095 WIRE INS. DIA.
 MUST BE CRIMPED WITH 22-18 OR 22-16 PIDG. (RED) TO


53115-1 ON TAPE	53115-2	BODY: COPPER (ASTM B152) TIN PL. (ASTM B545)
WIRE TERMINAL	53115-1 OBSOLETE	SLEEVE: COPPER (ASTM B152) TIN PL. (ASTM B545)
		INSULATION: NYLON (MIL-M-20693) TY. COLOR: YELLOW
QTY.	DESCRIPTION	PART NO.
		MATERIAL & FINISH

UNLESS OTHERWISE SPECIFIED DIMENSIONS ARE IN INCHES
 TOLERANCES ON:
 DECIMALS ±.008
 ANGLES ±5°

MATERIAL

SEE TABLE

CONTRACT NO.	11
DR.	Low Bail 6-6-72
CHK	Don Emmerich 6-7-72
APPD	Abel 6-15-72
REL	
DSGN APPD	
OTHER APPD	



AMP INCORPORATED
 HARRISBURG, PENNSYLVANIA

NAME

WIRE TERMINAL
 PIDG™-SPADE
 WIRE SIZE: 26-24

SIZE	CODE IDENT NO.	NUMBER
A	00779	53115
SCALE N.T.S.	SHEET 1 OF 1	