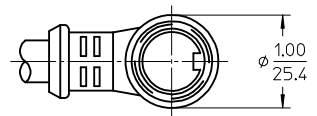
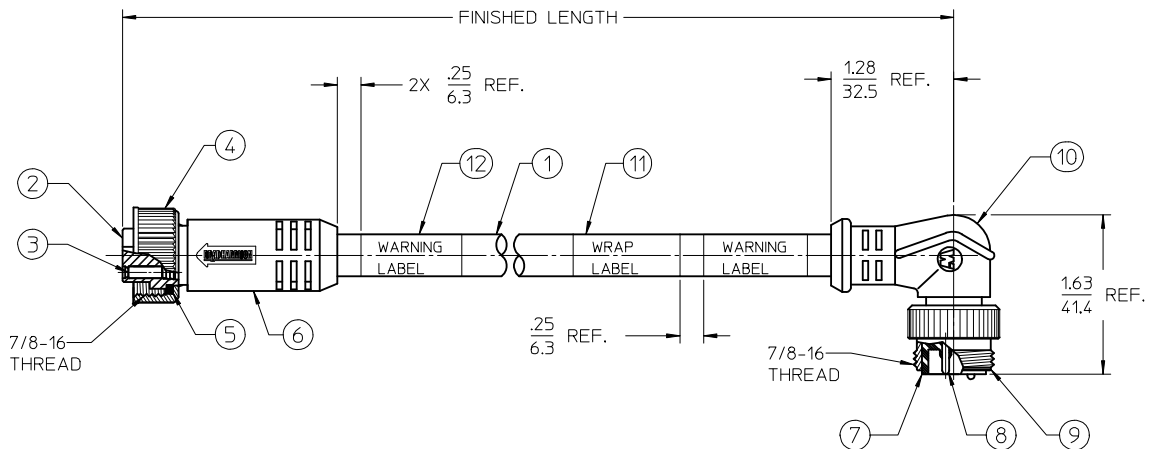


- NOTES:
- 1) MATERIAL: SEE TABLE
  - 2) FINISHES: SEE TABLE
  - 3) WRAP LABEL IS MARKED WITH P/N, DATE CODE VOLTAGE & AMPERAGE
  - 4) MATES WITH: MINI CHANGE POLE RECEPTACLE
  - 5) ELECTRICAL DATA:  
16AWG UL TYPE: TC-ER ST00W STRANDED CABLE  
MAX VOLTAGE: 600V  
MAX CURRENT: 3P 13A, 4P 10A  
PROTECTION IP67 (WHEN MATED)  
TEMPERATURE RANGE: -20°C TO 90°C
  - 6) PACKAGING:  
CABLE ASSEMBLIES ARE BAGGED SEPERATLY IN POLY BAGS WITH BAR CODE LABEL ATTACHED TO OUTSIDE OF BAG
  - 7) XX REFERES TO NUMBER OF CIRCUITS



PART NUMBER LEGEND

**11X032A45MXXX**

DOUBLE END  
POLE COUNT (3 OR 4)  
MC FEMALE STRAIGHT TO 90 DEG MALE (EXT THD)  
CABLE TYPE: 16 AWG PVC, GRAY  
FINISHED LENGTH:  
M001= .1M  
M010= 1.0M  
M100= 10.0M

12	2	WARNING LABEL	VINYL	ORANGE/BLACK
11	1	WRAP LABEL	VINYL	BLACK/YELLOW
10	1	90 DEG OVERMOLD	PVC	GRAY
9	1	MALE COUPLING NUT	ZINC ALLOY	BLACK
8	XX	CONTACT PIN	Cu ALLOY	GOLD PLATE
7	1	MALE INSERT	PVC	BLACK
6	1	STRAIGHT OVERMOLD	PVC	GRAY
5	1	FRICITION RING	NYLON	WHITE
4	1	FEMALE COUPLING NUT	ZINC ALLOY	BLACK
3	XX	CONTACT SOCKET	Cu ALLOY	GOLD PLATE
2	1	FEMALE INSERT	PVC	BLACK
1	SEE NOTE 5	CABLE	PVC	GRAY
ITEM	QTY	DESCRIPTION	MATERIAL	FINISH

RELEASED EC NO: IPG2016-0750 DRWNRSTONE 2015/11/19 CHKD:BARDE 2015/12/08 APPR: BWOODMAN 2016/02/29	QUALITY SYMBOLS ▽=0 ▽=0	GENERAL TOLERANCES (UNLESS SPECIFIED)	DIMENSION STYLE IN/MM	SCALE 1:1	DESIGN UNITS INCH	THIRD ANGLE PROJECTION																					
		<table border="1"> <thead> <tr> <th></th> <th>mm</th> <th>INCH</th> </tr> </thead> <tbody> <tr> <td>4 PLACES ±</td> <td>---</td> <td>±---</td> </tr> <tr> <td>3 PLACES ±</td> <td>---</td> <td>±---</td> </tr> <tr> <td>2 PLACES ±</td> <td>---</td> <td>±.01</td> </tr> <tr> <td>1 PLACE ±</td> <td>0.3</td> <td>±---</td> </tr> <tr> <td>0 PLACE ±</td> <td>---</td> <td>±---</td> </tr> </tbody> </table>		mm	INCH	4 PLACES ±	---	±---	3 PLACES ±	---	±---	2 PLACES ±	---	±.01	1 PLACE ±	0.3	±---	0 PLACE ±	---	±---	DRAWN BY RSTONE 2015/11/19	DATE 2015/11/19	CHECKED BY BARDE 2015/12/08	DATE 2015/12/08	APPROVED BY BWOODMAN 2016/02/29	DATE 2016/02/29	MATERIAL NO. -
	mm	INCH																									
4 PLACES ±	---	±---																									
3 PLACES ±	---	±---																									
2 PLACES ±	---	±.01																									
1 PLACE ±	0.3	±---																									
0 PLACE ±	---	±---																									
DRAFT WHERE APPLICABLE MUST REMAIN WITHIN DIMENSIONS		ANGULAR ± 2°		THIS DRAWING CONTAINS INFORMATION THAT IS PROPRIETARY TO MOLEX INCORPORATED AND SHOULD NOT BE USED WITHOUT WRITTEN PERMISSION																							