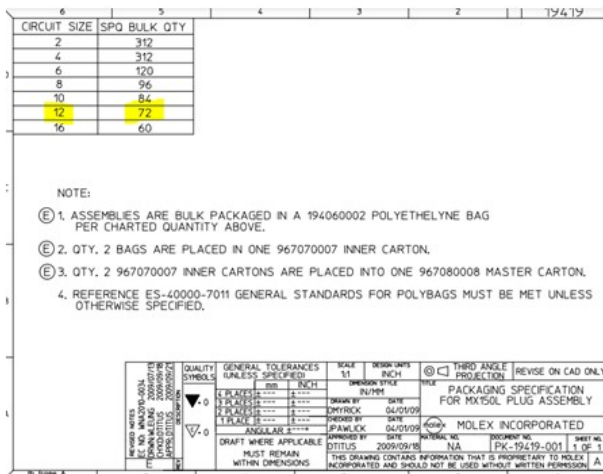
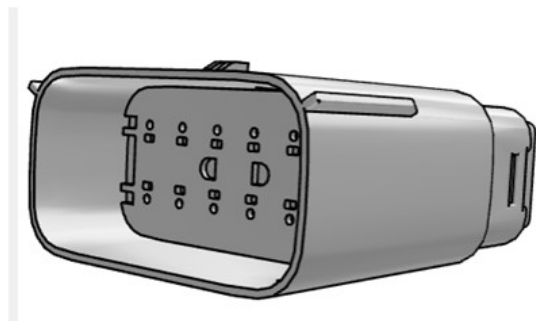




# Product Change Notification

<b>Date Issued :</b>	August 15, 2022	<b>PCN Number :</b>	512499
<b>Reason for Change :</b>	Packaging Method/Quantity Changing		
<b>Description of Change :</b>	To align the DU/MLQ so it is equal to a master carton quantity and multiples for MLQ. To follow packaging spec PK-19419-001. This will eliminate the need to repackage the product. This is only a correction as product already comes packaged correctly per the packaging specification.		
<b>Reason for Short Notice :</b>	Corrective Actions		
<b>Assessment of Change :</b>	No change to parts - Form/Fit/Function		
<b>Planned Implementation Date :</b>	August 22, 2022		
<b>Sample Availability Date:</b>	August 19, 2022		
<b>Internal Molex Qualification Date :</b>	August 19, 2022		
<b>Last date to request Samples by Customer :</b>	August 22, 2022		

Before Picture



After Picture

## Overview

- The DU and MLQ for the MX150L 12 circuit plug for 16-14 AWG wires were incorrectly changed so they currently do not match multiples of the packaging specification.
  - This is a quantity correction. No change to product. “No impact to fit, form or function”.
  - The DU and MLQ will conform to master carton quantities per PK-19419-001
  - DU will change from 240 to 288 and MLQ from 960 to 864.
- Part Number Impact
  - 194190018 only

2

Molex Confidential Information  
© 2016 Molex – All Rights Reserved. Unauthorized Reproduction/Distribution is Prohibited.



# RELEASED

**Additional Information :**

**Additional description**

- There is no change to the product. The change makes the DU equal to the master carton quantity of 288 pieces and the MLQ equal multiples of the DU.

3

Molex Confidential Information  
© 2016 Molex – All Rights Reserved. Unauthorized Reproduction/Distribution is Prohibited.

**molex**

RELEASED

You may address inquires regarding this PCN by clicking on the below link  
[mailto:pcn\\_coordinator@molex.com?subject=PCN\\_Notification:512499](mailto:pcn_coordinator@molex.com?subject=PCN_Notification:512499)  
or contact your Local Sales Engineer.

Note: While responding, please retain " PCN Notification : **PCN Notification: 512499** " in the e-mail Subject line for faster response.

[Molex, LLC](#)  
2222 Wellington Court  
Lisle, IL 60532  
TEL (800) 786-6539  
[www.molex.com](http://www.molex.com)

# Updated Quantity Template

Molex Part Number	Current		New	
	Standard Pack Quantity (DU)	Current Minimum Order Quantity(MLQ)	Standard Pack Quantity (DU)	New Minimum Order Quantity(MLQ)
194190018	240	960	288	864