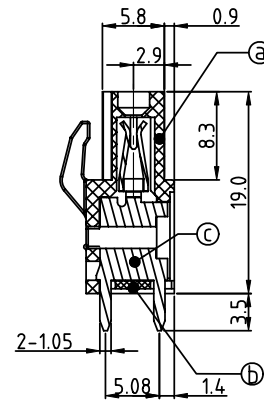
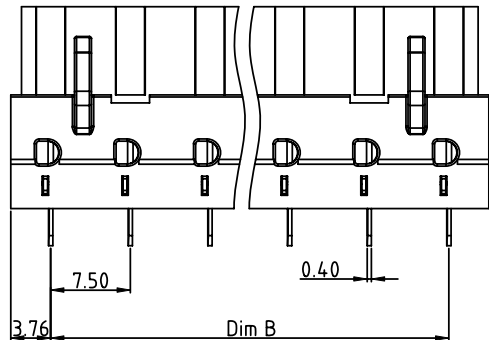
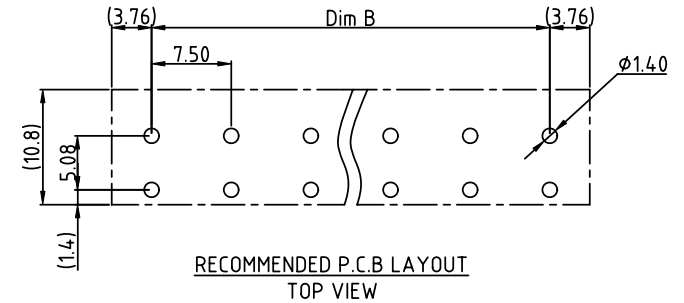
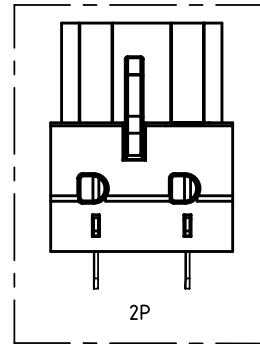
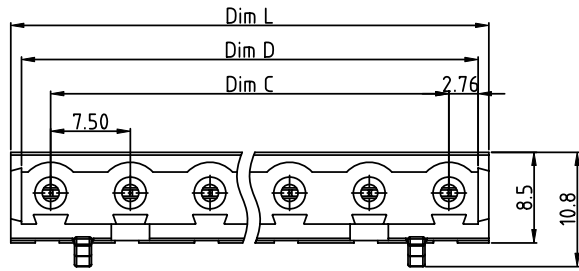


PRODUCT NUMBER	PITCH
V7xxA1x000J0G	7.50 mm



- Material:
- Item ① Terminal body: Thermoplastic (UL94V-0)
 - Item ② Terminal Cover: Thermoplastic (UL94V-0)
 - Item ③ Female contact: PhBz(CuSn), Tin plated
- Electrical cULus
- Voltage rating: 300VAC
 - Current rating: 10A
 - Withstanding Voltage: 1.6kv
 - Operating temperature: -40°C to +115°C
 - Soldering temperature: 260°C±5°C/5 Sec
 - Safety Approval:

PART NO.: V7 xx A 1 x 0 00J0 G

N=Number of poles
 Dim L=(N-1)×7.50+7.52
 Dim B=(N-1)×7.50
 Dim C=(N-1)×7.50
 Dim D=(N-1)×7.50+5.52

poles	Tolerance
2-5p	±0.15
6-10p	±0.25
11-16p	±0.35

Solid block	No. of poles	Color	RoHS compliant
0	2	Black (RAL9005)	(lead<4%) In copper Alloy
02	3	Red (RAL3001/D)	
03	4	Orange(RAL2011/P)	
...	5	Yellow(RAL1018/A)	
...	6	Green(RAL6018/T)	
16	7	Blue (RAL5015/A)	
	8	Grey(RAL7035/D)	
	9	White(RAL1102)	
	C	Green(RAL6018/U)	

mat'l. code		surface ASME Y14.5	tolerance ASME Y14.5	projection	product family TERMINAL BLOCK
ltr	ecn no	dr	date		title TERMINAL BLOCK PLUGGABLE PCB PLUG, VERTICAL
tolerances unless otherwise specified				MM	scale
angles		X.±0.5			
fil		X.X±0.3			
X*±1*		X.XX±0.1			
dr	EVIN ZHONG	043014			
enr	EVIN ZHONG	043014			
chr	HANKE FENG	043014			
appd	SHI JUN	043014			
sheet index	revision	A			
sheet	1				
dwg no		sheet 1 of 1		size	
V7xxA1x000J0G				A4	
type		CUSTOMER Drawing			