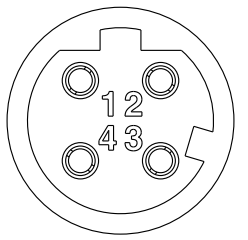
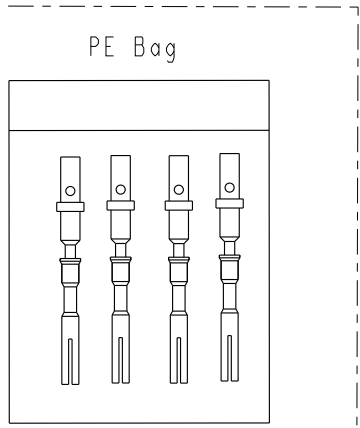
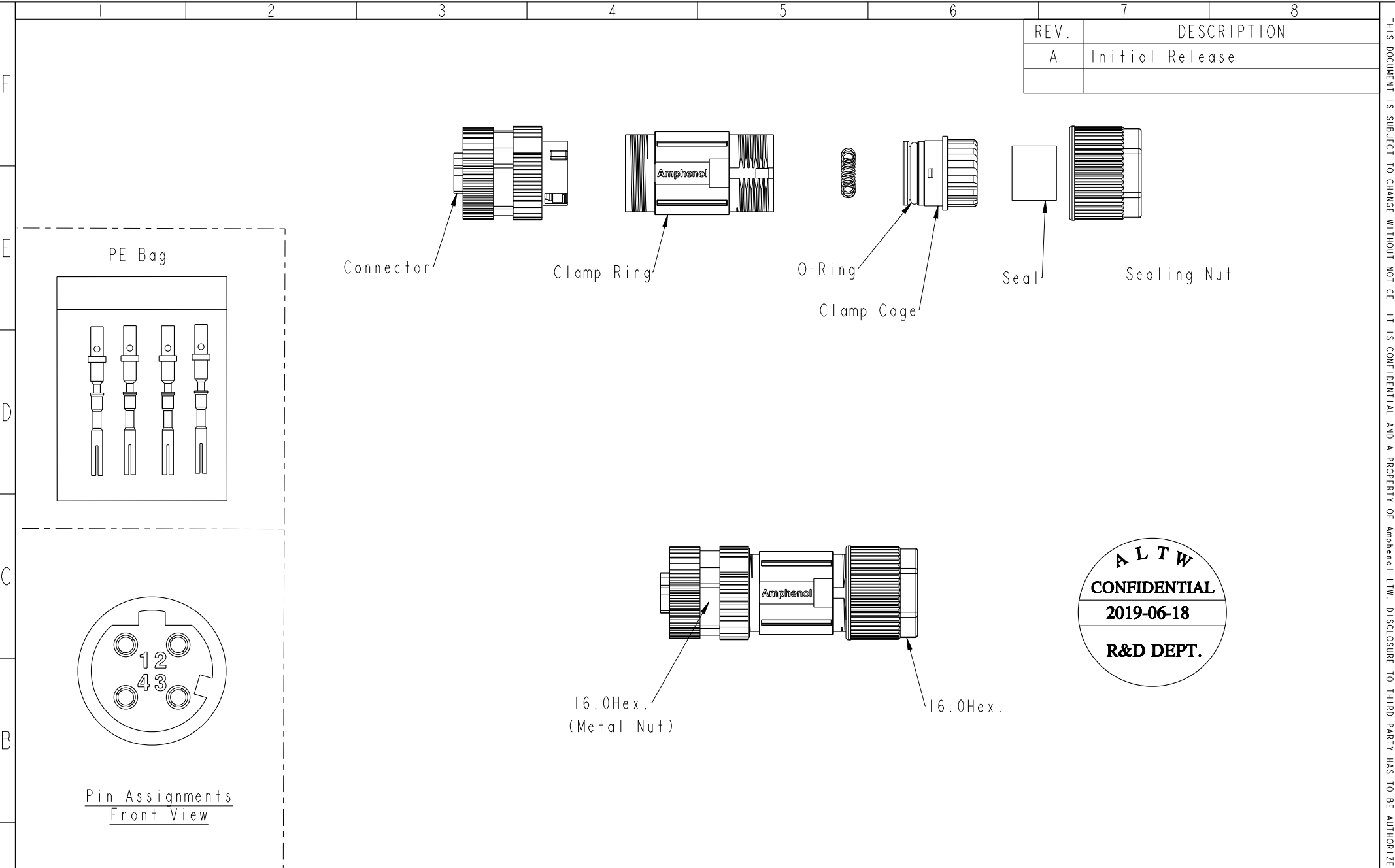


THIS DOCUMENT IS SUBJECT TO CHANGE WITHOUT NOTICE. IT IS CONFIDENTIAL AND A PROPERTY OF Amphenol LTW. DISCLOSURE TO THIRD PARTY HAS TO BE AUTHORIZED BY Amphenol LTW.

REV.	DESCRIPTION
A	Initial Release



UNIT:mm TOLERANCE ±0.5mm			<b>TITLE</b> M12 D-Code Shielded Assy 4PIN F Conn. F Pin		<b>ITEM NO</b> MSDS-04BFFC-SL7001		<b>DRAWN BY</b> Xiaofeng		<b>DATE</b> 2019/06/18	
	SCALE Free		SIZE A4		DWG NO MSDS-04BFFC-SL7001		CHECKED BY Li-Feng		DATE 2019/06/18	
	REV. A		WC-REV. .0		SHEET 1 OF 2		APPROVED BY Jerry		DATE 2019/06/18	
			: Inspection item		<b>Amphenol LTW</b> 安費諾亮泰企業股份有限公司		<b>CUSTOMER</b> ALTW		<b>8</b> W10814-03-001A2	

THIS DOCUMENT IS SUBJECT TO CHANGE WITHOUT NOTICE. IT IS CONFIDENTIAL AND A PROPERTY OF Amphenol LTW. DISCLOSURE TO THIRD PARTY HAS TO BE AUTHORIZED BY Amphenol LTW.

REV.	DESCRIPTION

M SDS - XX B F F C - S L 7 001

SAS: D-Code Shielded

04: 4Pin

B: Without S/R(無網尾)

F: Female Connector(母座)

F: Female Pin(母Pin)

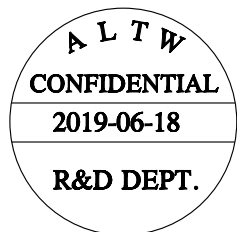
001: Without Cable

7: IP67(防水等級67)

L: Straight(180°)

S: Screw(螺紋式)

C: Crimp Type(組裝式)



- Note:
- \* IP: IP67.
  - \* Housing: Thermoplastic, Black.
  - \* Female Pin: Metal.
  - \* Nut: Metal.
  - \* O-Ring: Silicone, Grey.
  - \* Clamp Ring: Metal.
  - \* Sealing Nut: Metal..
  - \* Seal: Silicone, Grey.
  - \* Seal For Cable OD:  $\varnothing 4.0\text{mm} \sim \varnothing 8.0\text{mm}$
  - \* Applicable Wire gauge (Stranded wire cross section) 20AWG ~ 24AWG
  - \* Mating Recommended tightening torque: 3~4 kgf.cm / 0.29~0.39 N.m
  - \* Sealing-Nut Recommended tightening torque: 4~6 kgf.cm / 0.39~0.59 N.m
  - \* Detailed applicable wire specifications may vary depending on the actual wire construction.

UNIT:mm

TOLERANCE  $\pm 0.5$

TITLE M12 D-Code Shielded Assy 4PIN F Conn. F Pin			
SCALE 1:1	SIZE A4	SHEET 2 OF 2	
REV. A	WC-REV. .0	QC: Inspection item	

**Amphenol LTW**  
安費諾亮泰企業股份有限公司

ITEM NO MSDS-04BFFC-SL7001	DRAWN BY Xiaofeng	DATE 2019/06/18
DWG NO MSDS-04BFFC-SL7001	CHECKED BY Li-Feng	DATE 2019/06/18
CUSTOMER ALTW	APPROVED BY Jerry	DATE 2019/06/18