

## NOTCHED CAST U-BOLT PIPE CLAMP, BRASS, TINNED

### CATALOG NUMBER

---

**LPC571L**



### CERTIFICATIONS

---



### FEATURES

---

Clamp for bonding of handrails and pipes to the lightning protection system

Notched hole makes assembly easy and eliminates loose hardware

Listed to UL® 96

### PRODUCT ATTRIBUTES

---

Conductor Size, UL: Class 1 - Class 2 (4/0 Max)

Material: Brass

Finish: Tinned

Outer Diameter: 2" – 2 1/2"

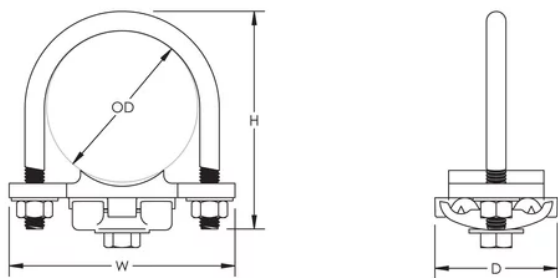
Depth: 1.960"

Height: 3 1/2"

Width: 3.630"

Unit Weight: 0.835 lb

## DIAGRAMS



## WARNING

nVent products shall be installed and used only as indicated in nVent's product instruction sheets and training materials. Instruction sheets are available at [www.nvent.com](http://www.nvent.com) and from your nVent customer service representative. Improper installation, misuse, misapplication or other failure to completely follow nVent's instructions and warnings may cause product malfunction, property damage, serious bodily injury and death and/or void your warranty.

**⚠ WARNING:** This product can expose you to chemicals including lead, which is known to the State of California to cause cancer and birth defects or other reproductive harm. For more information go to [www.P65Warnings.ca.gov](http://www.P65Warnings.ca.gov).

### North America

+1.800.753.9221

Option 1 – Customer Care

Option 2 – Technical Support

### Europe

Netherlands:

+31 800-0200135

France:

+33 800 901 793

### Europe

Germany:

800 1890272

Other Countries:

+31 13 5835404

### APAC

Shanghai:

+ 86 21 2412 1618/19

Sydney:

+61 2 9751 8500



Our powerful portfolio of brands:  
**nVent.com CADDY ERICO HOFFMAN RAYCHEM SCHROFF**  
**TRACER**