

| ATLANTIC VERSION TERMINATOR INTERFACE ADAPTER | PART NUMBER | REVISION | DESCRIPTION | FEED TYPE | APPLICATOR STYLE CONVERSION CHART | | | | | | |
|---|-------------|----------|--------------------------|--------------------------------|-----------------------------------|-----------------------|-----------|-------------|-----------|-----------|------------------------|
| | | | | | CONVERT TO | PART NUMBERS REQUIRED | | | | | |
| | 2151515-2 | E | FINE CRIMP HEIGHT ADJUST | PNEUMATIC | - | - | - | - | - | - | |
| | 2151515-5 | E | FINE CRIMP HEIGHT ADJUST | SERVO LATCH PLATE ⁴ | SERVO LATCH PLATE | 2119951-1 | - | 8-2151515-5 | 1901094-3 | - | 2168400-6 (QUANTITY 2) |
| | 2151515-6 | E | NON-CRIMP HEIGHT ADJUST | SERVO LATCH PLATE ⁴ | PNEUMATIC FEED | 2119950-1 | 1338685-1 | 5-18022-5 | 2119641-1 | 2119799-1 | 2063440-1 |
| | 2151515-7 | E | FINE CRIMP HEIGHT ADJUST | NONE | - | - | - | - | - | - | - |
| | 7-2151515-7 | D | CRIMP TOOLING KIT | - | - | - | - | - | - | - | - |

| APPLICATOR DATA | | |
|-----------------|----------------|------|
| CRIMP | SIZE | TYPE |
| WIRE | 0.66 mm [.026] | F |
| INSUL | 0.69 mm [.027] | F |

APPLICATOR INSTRUCTIONS
408-10389

| TERMINAL DATA: JST TERMINAL | | JST CRIMP SPECIFICATION | |
|------------------------------------|------------------|------------------------------|-----------------|
| TERMINAL NAME: TERMINAL SH | | | |
| WIRE STRIP LENGTH | | INSULATION DIAMETER RANGE | |
| 1.11-1.12 mm [.044-.044 IN] | | Ø0.40-0.80 mm [.016-.031 IN] | |
| TERMINAL APPLICATION SPECIFICATION | CHM-1-2146 Rev A | | |
| TERMINALS APPLIED ¹⁰ | | | |
| TE TERMINAL | JST TERMINAL | TE TERMINAL | JST TERMINAL |
| 1572070-2 | SSH-003T-P0.2-H | 1900433-1 | SSH-003T-P0.2-H |
| 1572070-3 | SSH-003GA-P0.2-H | | |

| WIRE SIZE | CRIMP HEIGHT mm [INCH] | CRIMP HEIGHT REFERENCE SETTING |
|-----------|------------------------------|--------------------------------|
| 28 AWG | 0.45+/-0.02 [.0177+/- .0008] | 7.4 |
| 30 AWG | 0.42+/-0.02 [.0165+/- .0008] | 7.6 |
| 32 AWG | 0.40+/-0.02 [.0157+/- .0008] | 7.8 |

- ¹ RECOMMENDED SPARE PARTS
- ² GREASE BEARING SURFACES LIGHTLY
- 3. LUBRICATE DAILY PER THE APPLICATOR INSTRUCTION SHEET SUPPLIED WITH THE APPLICATOR.
- ⁴ APPLICATOR SPECIFIC DATA TO BE ENTERED INTO BLANK MEMORY CHIP AT ASSEMBLY. SEE BELOW FOR PART NUMBER:
 PNEUMATIC FEED WITH "SMART APPLICATOR" CONVERSION: 8-2151515-4
 SERVO FEED WITH "FINE CRIMP HEIGHT ADJUST": 8-2151515-5
 SERVO FEED WITH "NON-CRIMP HEIGHT ADJUST": 8-2151515-6
- 5. ADJUSTMENT OF THE STRIPPER MAY BE REQUIRED WHEN MOVING THE APPLICATOR BETWEEN BENCH AND LEADMAKER APPLICATIONS.
- ⁶ APPLY PART NUMBER 1-23419-5 LOCTITE TO THREADS OF ITEM 62. APPLY PART NUMBER 2-23419-6 LOCTITE TO THREADS OF ITEM 242. FOR -6 ONLY APPLY PART NUMBER 1-23419-5 LOCTITE TO THREADS OF ITEM 37.
- ⁷ GREASE THREADS, GROOVE AND O-RING ON ITEMS 35 & 252.
- ⁸ MAGNET, ITEM 166 MUST BE ORIENTED CORRECTLY IN ORDER TO PROPERLY ACTUATE THE COUNTER.
- ⁹ CRIMP HEIGHT REFERENCE SETTING WAS THE SETTING USED WHEN THE APPLICATOR WAS QUALIFIED AT THE FACTORY. ADJUSTMENT MAY BE NECESSARY WHEN RUNNING APPLICATOR IN THE FIELD.
- ¹⁰ TERMINAL PITCH NOT COMPATIBLE WITH MECHANICAL FEED.
- ¹¹ WHEN ASSEMBLING A NON CRIMP HEIGHT ADJUST APPLICATOR (-6) USE SHIMS FROM ITEM 260 TO ACHIEVE A NOMINAL SHIM HEIGHT OF 5.35.
- ¹² NO CUT CARRIER.

***WARNING**
 ON INSTALLATION, SET WIRE DISC, ITEM 40 TO LARGEST WIRE SIZE SETTING. USE OF SETTINGS BELOW MINIMUM REQUIRED CRIMP HEIGHT SETTING WILL CAUSE DAMAGE TO CRIMP TOOLING.

| SET UP GAUGE | LOC | DIST | REVISIONS | | | |
|--------------|-----|------|-----------|-----------|----|------|
| 2161422-1 | A | 66 | REV | DATE | BY | APPV |
| | | | D | 15FEB2016 | MR | GB |
| | | | E | 10MAR2016 | JH | CT |

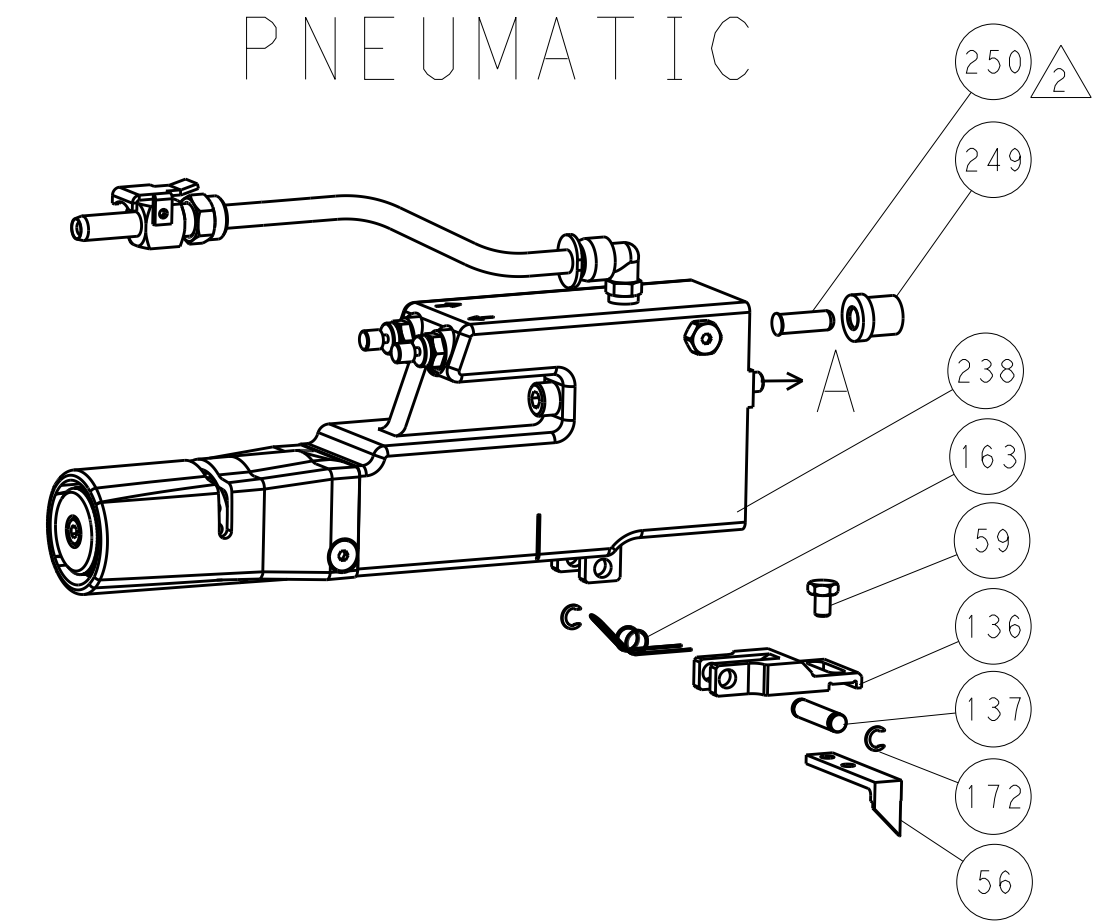
| REV | DATE | BY | APPV | DESCRIPTION | ITEM NO | |
|-----|------|-----|------|-------------|-------------------------------------|-----|
| - | - | 1 | - | 2119957-2 | APPLICATOR SHIM PACK | 260 |
| - | - | 1 | 1 | 8-21084-0 | O-RING, .676 ID, .070 DIA. MAT. | 252 |
| - | - | - | - | 2119640-1 | PUSH ROD, AIR FEED | 250 |
| - | - | - | - | 2079988-1 | BUSHING, LCH5-12, MISUMI | 249 |
| - | - | - | - | 2119641-1 | FEED CAM, AIR FEED | 248 |
| - | - | 1 | 1 | 2119798-1 | DETENT PIN | 247 |
| - | - | 1 | 1 | 1-22279-3 | SPRING, COMPRESSION | 246 |
| - | - | 1 | - | 2119758-1 | RAM, AMP STYLE, SIDE FEED, NON-ADJ. | 245 |
| - | - | 1 | 1 | 2119082-1 | CAM, SNAIL, INSULATION ADJUSTMENT | 244 |
| - | - | 1 | 1 | 2079764-1 | WASHER, WAVE SPRING, CREST-TO-CREST | 243 |
| - | - | 1 | 1 | 2119083-1 | RETAINER, INSULATION DIAL | 242 |
| - | - | 2 | 2 | 2168400-6 | SHCS, LOW HEAD, RoHS, M5 X 16 | 240 |
| - | - | - | - | 2063440-1 | AIR FEED MODULE | 238 |
| - | - | 1 | 1 | 2119740-2 | TAG, IDENTIFICATION | 213 |
| - | - | 1 | 1 | 1901094-3 | SPACER, FEEDER | 198 |
| - | - | - | - | 21045-3 | RING, RETAIN, EXTERN, 3/16 CRESCENT | 172 |
| - | - | 1 | 1 | 994969-1 | MAGNET, RARE EARTH HIGH ENERGY | 166 |
| - | - | REF | REF | 994970-2 | COUNTER, MAGNETIC | 164 |
| - | - | - | - | 240638-1 | SPRING, FEED FINGER | 163 |
| - | - | - | - | 3-23627-7 | PIN, RETAIN, GRVD, 3/16 X .854 | 137 |
| - | - | - | - | 2119799-1 | HOLDER, FEED FINGER, AF | 136 |
| - | - | REF | REF | SEE NOTE 4 | MEMORY CHIP, PROGRAMMED | 135 |
| - | - | 1 | 1 | 1633743-1 | SERVO FEED LATCH ASM | 133 |
| - | - | 2 | 2 | 1-18028-2 | WASHER, FLAT, REG M4 | 119 |
| - | - | REF | REF | 2119944-1 | FEED FINGER ASSEMBLY, SF | 117 |
| - | - | 1 | 1 | 2119955-1 | ASSY, LUBRICATOR, SIDE FEED | 113 |
| - | - | 1 | 1 | 2119956-1 | DOCUMENTATION PACKAGE | 71 |
| - | - | 1 | 1 | 1-2119791-4 | DEPRESSOR, WIRE | 70 |
| - | - | 1 | 1 | 2119943-1 | WASHER, SPACER | 69 |
| - | - | 1 | - | 2119740-1 | TAG, IDENTIFICATION | 67 |
| - | - | 2 | 2 | 2168078-1 | SCREW, DRIVE, RH, RoHS, 2 x .188 | 66 |
| - | - | 1 | - | 2119793-1 | LIMITER, ADJUSTMENT BOLT | 63 |
| - | - | 3 | 3 | 992763-5 | SCR, SET, SOC, CONE POINT, M3 x 4.0 | 62 |
| - | - | 1 | 1 | 2161425-1 | SCREW, SHOULDER | 60 |
| - | - | - | - | 5-18022-5 | SCR, HEX HD CAP, M4 X 6.0 | 59 |
| - | - | - | - | 1338685-1 | PAWL, FEED | 56 |
| - | - | 4 | 4 | 2168400-1 | SHCS, LOW HEAD, RoHS, M4 X 12 | 54 |
| - | - | - | - | 18023-9 | SCR, SKT HD CAP M4 X 6.0 | 49 |
| - | - | 1 | 1 | 2-2119656-5 | APPLICATOR BASIC ASSEMBLY, SF | 46 |
| - | - | 1 | 1 | 2119370-1 | RAM, AMP STYLE, SIDE FEED | 44 |
| - | - | 1 | 1 | 2079383-7 | SCR, BHSC, RoHS (M8 X 25) | 41 |
| - | - | 1 | - | 2119645-1 | DISC, NUMBERED FA WIRE ADJUSTMENT | 40 |
| - | - | 1 | - | 2119957-1 | APPLICATOR SHIM PACK | 39 |
| - | - | 1 | 1 | 1-2119644-4 | RAM WASHER, PRECISION | 38 |
| - | - | 1 | 1 | 2119085-1 | FA HEAD, ATLANTIC STYLE | 37 |
| - | - | 1 | - | 2119092-1 | BOLT, ADJUSTMENT | 35 |
| - | - | 1 | 1 | 2-1752356-6 | SUPPORT, TERMINAL | 34 |
| - | - | 2 | 2 | 2079383-5 | SCR, BHSC, RoHS (M4 X 20) | 33 |
| - | - | 1 | 1 | 2161328-1 | HEX HEAD, FLANGED, M5 x 8mm LONG | 32 |
| - | - | 1 | 1 | 1320908-2 | SPACER, STRIP GUIDE | 30 |
| - | - | 1 | 1 | 2119959-1 | ASSEMBLY, STRIP GUIDE | 29 |
| - | - | 1 | 1 | 1320928-2 | STRIP GUIDE | 24 |
| - | - | 1 | 1 | 2168083-2 | SCR, SKT HD CAP, RoHS, M4 X 8.0 | 21 |
| - | - | 1 | 1 | 1803338-1 | STRIPPER, SIDE FEED | 19 |
| - | - | 1 | 1 | 3-22280-3 | SPRING, COMPRESSION | 12 |
| - | - | 1 | 1 | 1-356885-5 | STOP, SHEAR | 11 |
| - | - | 1 | 1 | 2119805-1 | SHEAR HOLDER, FRONT | 10 |
| - | - | 1 | 1 | 1803095-6 | FLOATING SHEAR, FRONT | 9 |
| - | - | 1 | 1 | 1-1633928-2 | ANVIL, COMBINATION | 8 |
| - | - | - | - | - | - | 7 |
| - | - | - | - | - | - | 6 |
| - | - | 1 | 1 | 1-2119757-8 | DEPRESSOR, SHEAR | 5 |
| - | - | 1 | 1 | 2-238011-5 | BLOCK, CRIMPER SPACER | 4 |
| - | - | 1 | 1 | 1803339-1 | CRIMPER, INSULATION F | 3 |
| - | - | - | - | - | - | 2 |
| - | - | 1 | 1 | 1-1803193-0 | CRIMPER, WIRE PREMIUM | 1 |

ATLANTIC VERSION
 Shown on sheets 1 of 4 & 2 of 4
 (Pacific version shown on sheets 3 of 4 & 4 of 4)

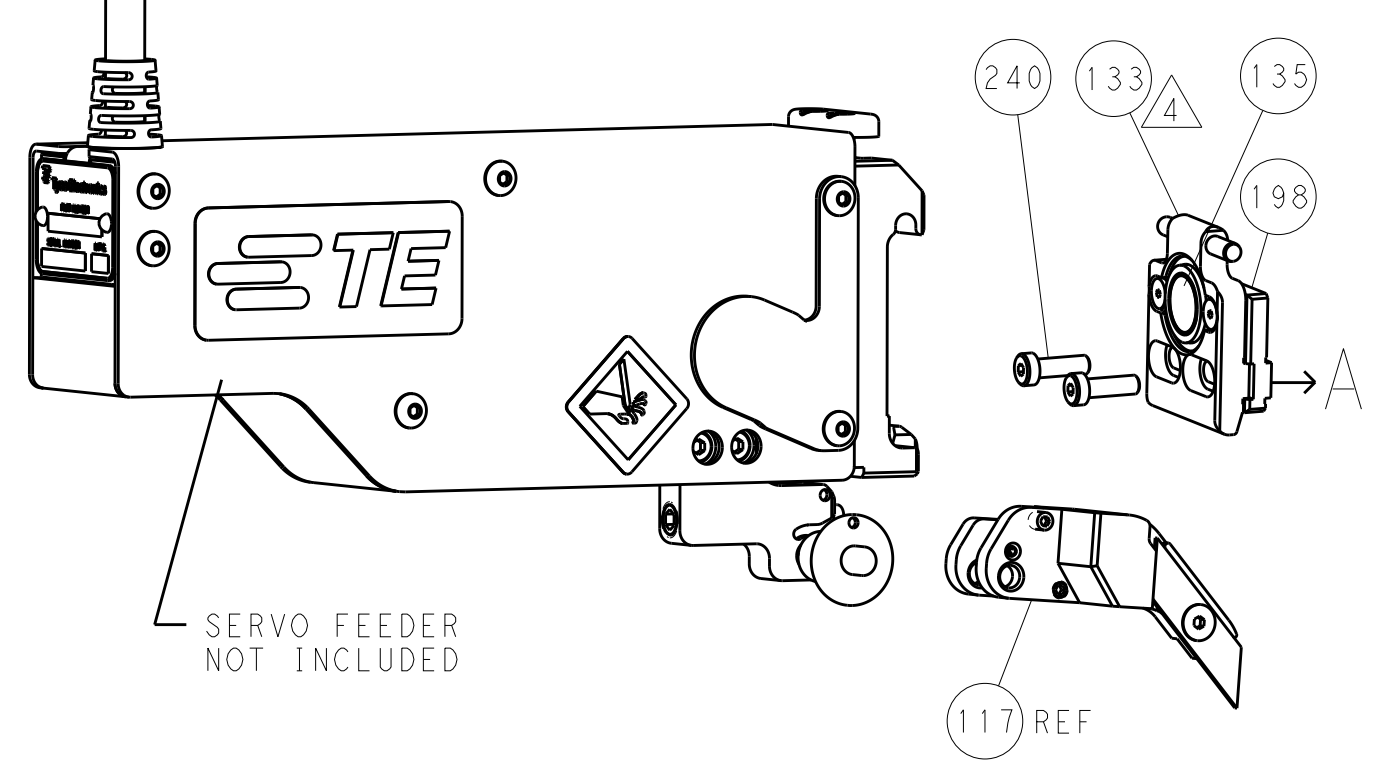
| DIMENSIONS: | | TOLERANCES UNLESS OTHERWISE SPECIFIED: | | MATERIAL: | | FINISH: | | WEIGHT: | | SCALE: | |
|-------------|---------|--|---------|-----------|---------|---------|--------|---------|--|--|--------------|
| mm | 0 PLC ± | 1 PLC ± | 2 PLC ± | 3 PLC ± | 4 PLC ± | ANGLES | FINISH | | | Customer Accessible Production Drawing | SCALE 1:2 |
| | | | | | | | | | | | SHEET 1 OF 4 |

| LOC | | DIST | | REVISIONS | | | |
|-----|----|------|-----|-------------|------|-----|------|
| A | 66 | P | LTM | DESCRIPTION | DATE | DWN | APVD |
| | | - | | SEE SHEET 1 | | | |

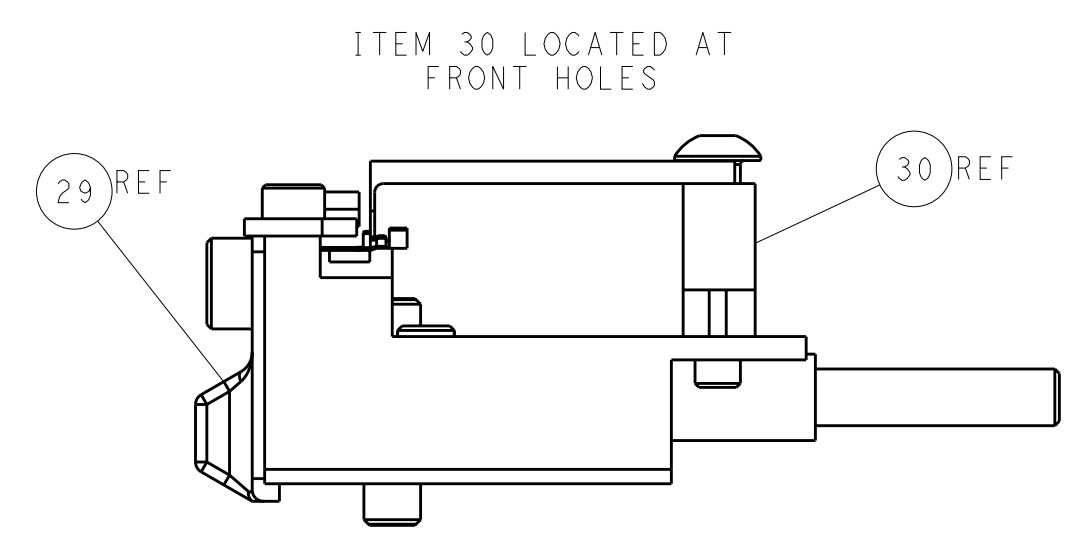
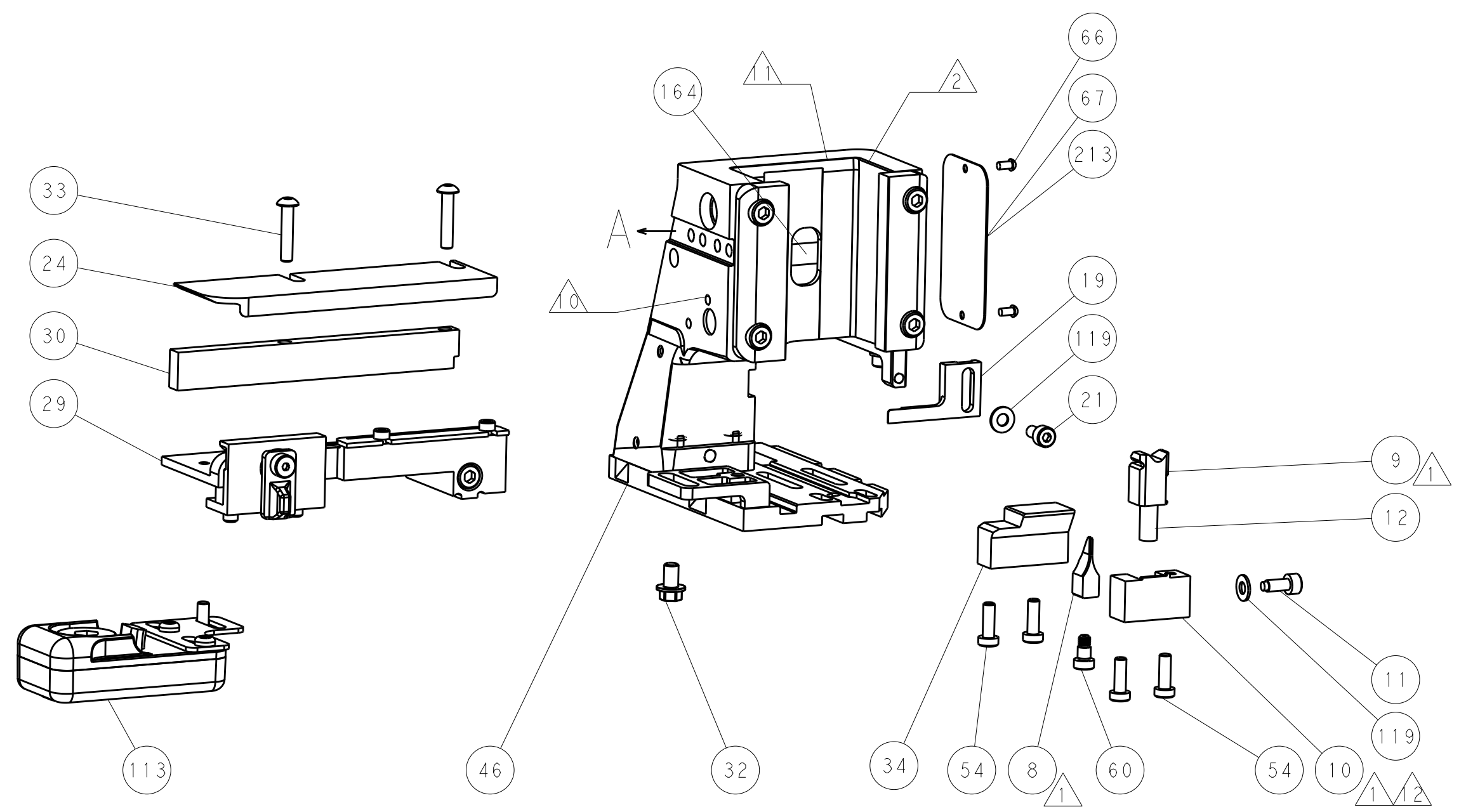
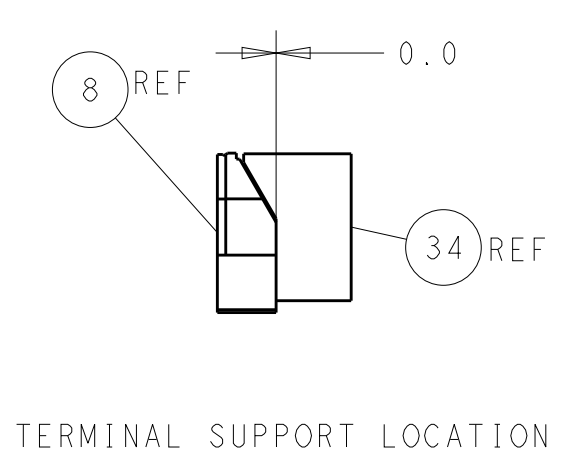
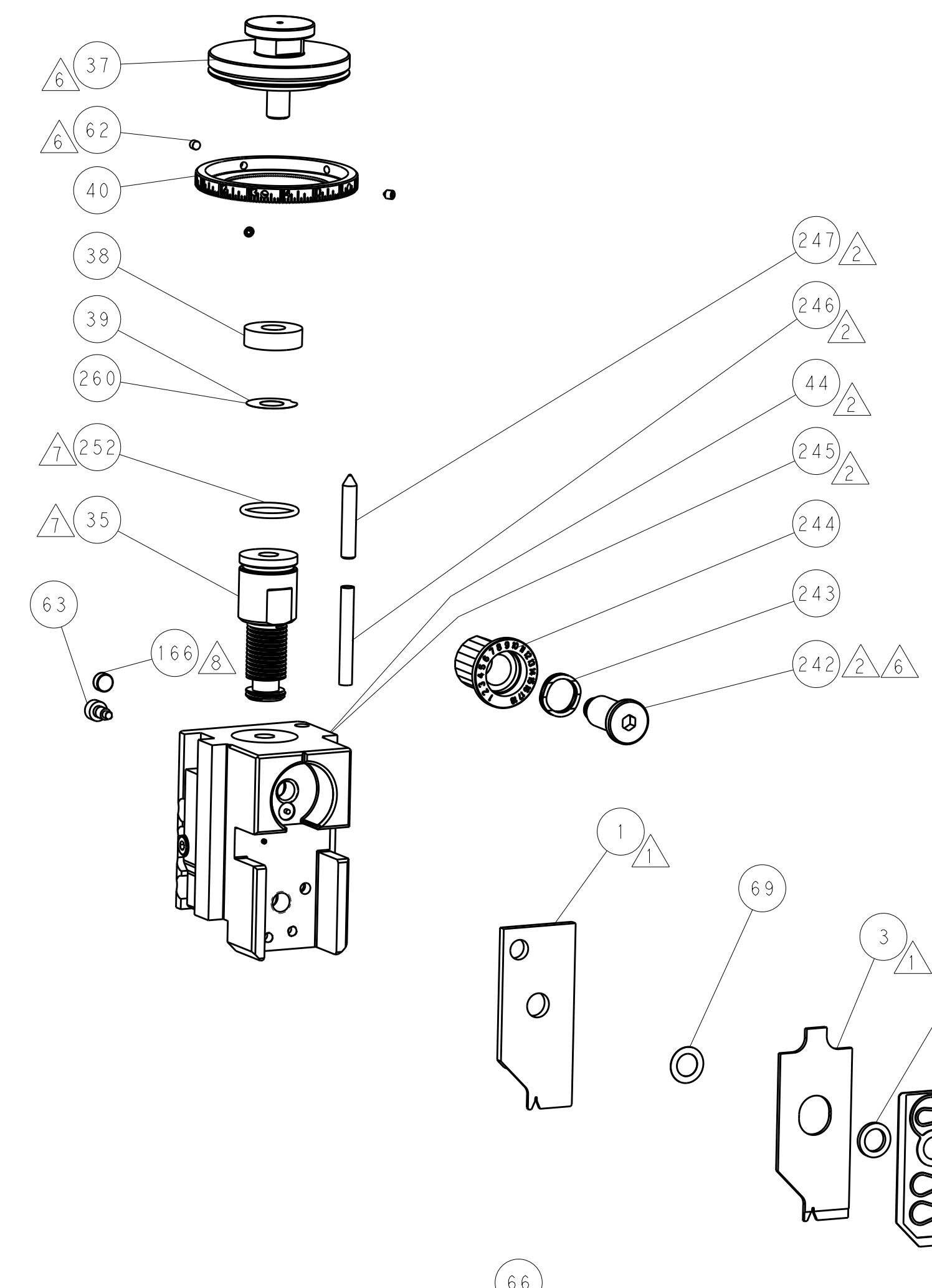
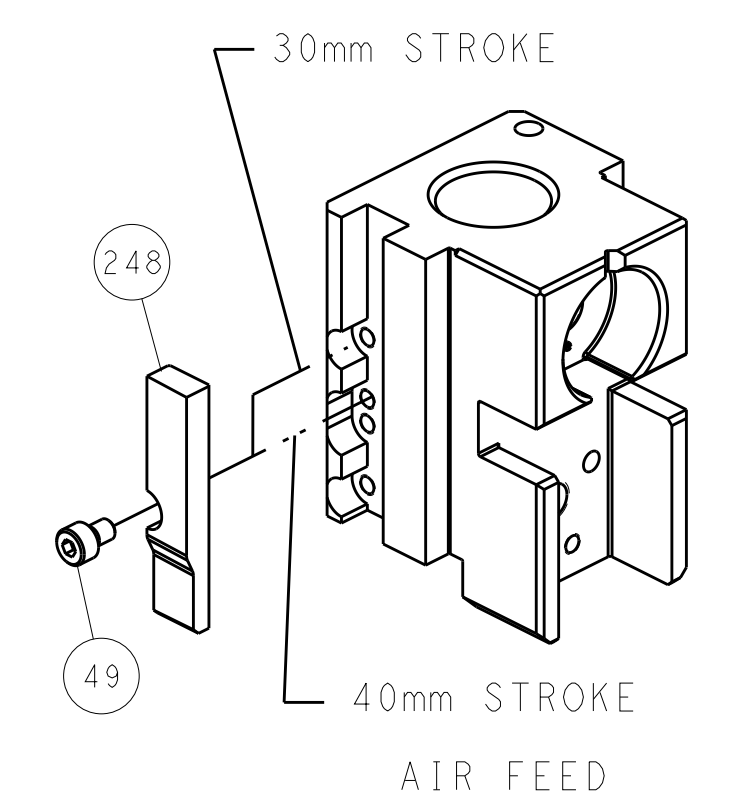
FEED TYPE PNEUMATIC



SERVO LATCH PLATE



CAM POSITIONS



FEED TRACK POSITION
GUIDE BY INSULATION BARREL

ATLANTIC VERSION
 Shown on sheets 1 of 4 & 2 of 4
 (Pacific version shown on sheets 3 of 4 & 4 of 4)

| | | | |
|---|--|---|--|
| <small>THE DRAWING IS UNPUBLISHED. RELEASED FOR PUBLICATION. IT IS THE BUYER'S RESPONSIBILITY TO CONTACT THE SUPPLIER FOR THE LATEST REVISIONS.</small> | | DWN: C.CHEN 02NOV2012 CHK: S.XI 02NOV2012 APVD: J.CRUZ 02NOV2012 | TE Connectivity Harrisburg, PA 17105-3608 |
| DIMENSIONS: mm TOLERANCES UNLESS OTHERWISE SPECIFIED: 0 PLC ± 1 PLC ± 2 PLC ± 3 PLC ± 4 PLC ± ANGLES ± | | NAME: Ocean Side Feed Applicator PRODUCT SPEC: APPLICATION SPEC: WEIGHT: | RESTRICTED TO: SIZE: A1 CAGE CODE: 00779 DRAWING NO: 2151515 SCALE: 1:2 SHEET: 2 OF 4 REV: E |
| MATERIAL: FINISH: | | Customer Accessible Production Drawing | |

| PACIFIC VERSION TERMINATOR INTERFACE ADAPTER | PART NUMBER | REVISION | DESCRIPTION | FEED TYPE | APPLICATOR STYLE CONVERSION CHART | | | | | |
|--|-------------|--------------------------|--------------------------|----------------------------|-----------------------------------|-----------------------|---|-------------|-----------|------------------------|
| | | | | | CONVERT TO | PART NUMBERS REQUIRED | | | | |
| | 2-2151515-2 | E | FINE CRIMP HEIGHT ADJUST | PNEUMATIC | - | - | - | - | - | - |
| | | | | | SERVO LATCH PLATE | 2119951-1 | - | 8-2151515-5 | 1901094-3 | 2168400-6 (QUANTITY 2) |
| | | | | | SMART APPLICATOR | 2161326-1 | - | 8-2151515-4 | - | - |
| | 2-2151515-5 | E | FINE CRIMP HEIGHT ADJUST | SERVO LATCH PLATE Δ | - | - | - | - | - | - |
| 2-2151515-7 | E | FINE CRIMP HEIGHT ADJUST | NONE | - | - | - | - | - | - | |
| 7-2151515-7 | D | CRIMP TOOLING KIT | - | - | - | - | - | - | - | |

| APPLICATOR DATA | | |
|-----------------------------------|------------------|------|
| CRIMP | SIZE | TYPE |
| WIRE | 0.66 mm [.026] | F |
| INSUL | 0.69 mm [.027] | F |
| APPLICATOR INSTRUCTIONS 408-10389 | | |

| TERMINAL DATA: JST TERMINAL | | JST CRIMP SPECIFICATION | |
|------------------------------------|------------------|---|-----------------|
| TERMINAL NAME: TERMINAL SH | | | |
| WIRE STRIP LENGTH | | INSULATION DIAMETER RANGE | |
| 1.11-1.12 mm [.044-.044 IN] | | \varnothing 0.40-0.80 mm [.016-.031 IN] | |
| TERMINAL APPLICATION SPECIFICATION | CHM-1-2146 Rev A | | |
| TERMINALS APPLIED Δ | | | |
| TE TERMINAL | JST TERMINAL | TE TERMINAL | JST TERMINAL |
| 1572070-2 | SSH-003T-P0.2-H | 1900433-1 | SSH-003T-P0.2-H |
| 1572070-3 | SSH-003GA-P0.2-H | | |

| WIRE SIZE | CRIMP HEIGHT mm [INCH] | CRIMP HEIGHT REFERENCE SETTING Δ |
|-----------|-----------------------------------|---|
| 28 AWG | 0.45 +/- 0.02 [.0177 +/- .0008] | 7.4 |
| 30 AWG | 0.42 +/- 0.02 [.0165 +/- .0008] | 7.6 |
| 32 AWG | 0.40 +/- 0.02 [.0157 +/- .0008] | 7.8 |

- RECOMMENDED SPARE PARTS
- Δ GREASE BEARING SURFACES LIGHTLY
- 3. LUBRICATE DAILY PER THE APPLICATOR INSTRUCTION SHEET SUPPLIED WITH THE APPLICATOR.
- Δ APPLICATOR SPECIFIC DATA TO BE ENTERED INTO BLANK MEMORY CHIP AT ASSEMBLY. SEE BELOW FOR PART NUMBER:
 PNEUMATIC FEED WITH "SMART APPLICATOR" CONVERSION: 8-2151515-4
 SERVO FEED WITH "FINE CRIMP HEIGHT ADJUST": 8-2151515-5
- 5. ADJUSTMENT OF THE STRIPPER MAY BE REQUIRED WHEN MOVING THE APPLICATOR BETWEEN BENCH AND LEADMAKER APPLICATIONS.
- Δ APPLY PART NUMBER 1-23419-5 LOCTITE TO THREADS OF ITEM 62.
 APPLY PART NUMBER 2-23419-6 LOCTITE TO THREADS OF ITEM 242.
- Δ GREASE THREADS, GROOVE AND O-RING ON ITEMS 139 & 152.
- Δ MAGNET MUST BE ORIENTED CORRECTLY IN ORDER TO PROPERLY ACTUATE THE COUNTER.
- Δ CRIMP HEIGHT REFERENCE SETTING WAS THE SETTING USED WHEN THE APPLICATOR WAS QUALIFIED AT THE FACTORY. ADJUSTMENT MAY BE NECESSARY WHEN RUNNING APPLICATOR IN THE FIELD.
- Δ TERMINAL PITCH NOT COMPATIBLE WITH MECHANICAL FEED.
- Δ NO CUT CARRIER.

***WARNING**
 ON INSTALLATION, SET WIRE DISC, ITEM 40 TO LARGEST WIRE SIZE SETTING. USE OF SETTINGS BELOW MINIMUM REQUIRED CRIMP HEIGHT SETTING WILL CAUSE DAMAGE TO CRIMP TOOLING.

PACIFIC VERSION
 Shown on sheets 3 of 4 & 4 of 4
 (Atlantic version shown on sheets 1 of 4 & 2 of 4)

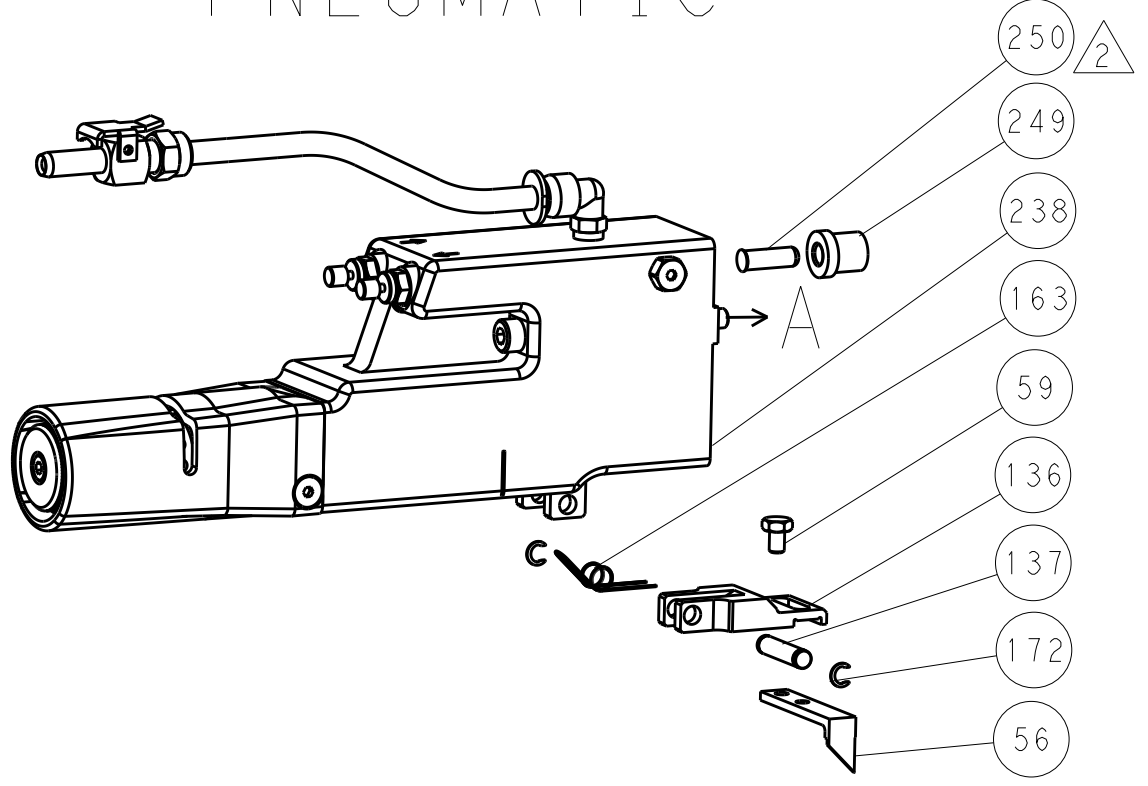
| SET UP GAUGE | LOC | DIST | REVISIONS | | | |
|--------------|-----|------|-----------|-------------|----|------|
| 2161422-1 | A | 66 | REV | DATE | BY | APPV |
| | | | - | SEE SHEET 1 | - | - |

| | | | | | | |
|---|-----|-----|-----|-------------|-------------------------------------|-----|
| - | 1 | 1 | 1 | 2119782-1 | FINE ADJUST HEAD ASM, PACIFIC STYLE | 251 |
| - | - | - | 1 | 2119640-1 | PUSH ROD, AIR FEED | 250 |
| - | - | - | 1 | 2079988-1 | BUSHING, LCH5-12, MISUMI | 249 |
| - | 1 | 1 | 1 | 1-22279-3 | SPRING, COMPRESSION | 246 |
| - | 1 | 1 | 1 | 2119082-1 | CAM, SNAIL, INSULATION ADJUSTMENT | 244 |
| - | 1 | 1 | 1 | 2079764-1 | WASHER, WAVE SPRING, CREST-TO-CREST | 243 |
| - | 1 | 1 | 1 | 2119083-1 | RETAINER, INSULATION DIAL | 242 |
| - | - | 2 | - | 2168400-6 | SHCS, LOW HEAD, RoHS, M5 X 16 | 240 |
| - | - | - | 1 | 2063440-1 | AIR FEED MODULE | 238 |
| - | - | 1 | - | 2119740-2 | TAG, IDENTIFICATION | 213 |
| - | - | 1 | - | 1901094-3 | SPACER, FEEDER | 198 |
| - | - | - | 2 | 21045-3 | RING, RETAIN, EXTERN, 3/16 CRESCENT | 172 |
| - | 1 | 1 | 1 | 994969-1 | MAGNET, RARE EARTH HIGH ENERGY | 166 |
| - | REF | REF | REF | 994970-2 | COUNTER, MAGNETIC | 164 |
| - | - | - | 1 | 240638-1 | SPRING, FEED FINGER | 163 |
| - | 1 | 1 | 1 | 8-21084-1 | O-RING, .801 ID, .070 DIA, MAT. | 152 |
| - | - | - | 1 | 2119641-2 | FEED CAM, AIR FEED | 151 |
| - | 1 | 1 | 1 | 2119798-2 | DETENT PIN | 145 |
| - | 1 | 1 | 1 | 2079383-8 | SCR, BHSC, RoHS (M4 X 16) | 144 |
| - | 4 | 4 | 4 | 2168400-5 | SHCS, LOW HEAD, RoHS, M4 X 20 | 143 |
| - | 1 | 1 | 1 | 3-2119656-0 | APPLICATOR BASIC ASSEMBLY, SF | 141 |
| - | 1 | 1 | 1 | 2119650-1 | RAM, ASIAN STYLE, SIDE FEED | 140 |
| - | 1 | 1 | 1 | 2119092-2 | BOLT, ADJUSTMENT | 139 |
| - | - | - | 1 | 3-23627-7 | PIN, RETAIN, GRVD, 3/16 X .854 | 137 |
| - | - | - | 1 | 2119799-1 | HOLDER, FEED FINGER, AF | 136 |
| - | - | REF | - | SEE NOTE 4 | MEMORY CHIP, PROGRAMMED | 135 |
| - | - | 1 | - | 1633743-1 | SERVO FEED LATCH ASM | 133 |
| - | 2 | 2 | 2 | 1-18028-2 | WASHER, FLAT, REG M4 | 119 |
| - | - | REF | - | 2119944-1 | FEED FINGER ASSEMBLY, SF | 117 |
| - | 1 | 1 | 1 | 2119955-1 | ASSY, LUBRICATOR, SIDE FEED | 113 |
| - | 1 | 1 | 1 | 2119956-1 | DOCUMENTATION PACKAGE | 71 |
| - | 1 | 1 | 1 | 1-2119791-4 | DEPRESSOR, WIRE | 70 |
| - | 1 | 1 | 1 | 2119943-1 | WASHER, SPACER | 69 |
| - | 1 | - | 1 | 2119740-1 | TAG, IDENTIFICATION | 67 |
| - | 2 | 2 | 2 | 2168078-1 | SCREW, DRIVE, RH, RoHS, 2 x .188 | 66 |
| - | 1 | 1 | 1 | 2119793-1 | LIMITER, ADJUSTMENT BOLT | 63 |
| - | 3 | 3 | 3 | 992763-5 | SCR, SET, SOC, CONE POINT, M3 x 4.0 | 62 |
| - | - | - | 1 | 5-18022-5 | SCR, HEX HD CAP, M4 X 6.0 | 59 |
| - | - | - | 1 | 1338685-1 | PAWL, FEED | 56 |
| - | - | - | 1 | 18023-9 | SCR, SKT HD CAP M4 X 6.0 | 49 |
| - | 1 | 1 | 1 | 2079383-7 | SCR, BHSC, RoHS (M8 X 25) | 41 |
| - | 1 | 1 | 1 | 2119645-1 | DISC, NUMBERED FA WIRE ADJUSTMENT | 40 |
| - | 1 | 1 | 1 | 2119957-1 | APPLICATOR SHIM PACK | 39 |
| - | 1 | 1 | 1 | 1-2119644-4 | RAM WASHER, PRECISION | 38 |
| - | 1 | 1 | 1 | 2-1752356-6 | SUPPORT, TERMINAL | 34 |
| - | 2 | 2 | 2 | 2079383-5 | SCR, BHSC, RoHS (M4 X 20) | 33 |
| - | 1 | 1 | 1 | 2161328-1 | HEX HEAD, FLANGED, M5 x 8mm LONG | 32 |
| - | 1 | 1 | 1 | 1320908-2 | SPACER, STRIP GUIDE | 30 |
| - | 1 | 1 | 1 | 2119959-1 | ASSEMBLY, STRIP GUIDE | 29 |
| - | 1 | 1 | 1 | 1320928-2 | STRIP GUIDE | 24 |
| - | 1 | 1 | 1 | 2168083-2 | SCR, SKT HD CAP, RoHS, M4 X 8.0 | 21 |
| - | 1 | 1 | 1 | 1803338-1 | STRIPPER, SIDE FEED | 19 |
| - | 1 | 1 | 1 | 3-22280-3 | SPRING, COMPRESSION | 12 |
| - | 1 | 1 | 1 | 1-356885-5 | STOP, SHEAR | 11 |
| - | 1 | 1 | 1 | 2119805-1 | SHEAR HOLDER, FRONT | 10 |
| - | 1 | 1 | 1 | 1803095-6 | FLOATING SHEAR, FRONT | 9 |
| - | 1 | 1 | 1 | 1-1633928-2 | ANVIL, COMBINATION | 8 |
| - | - | - | - | - | - | 7 |
| - | - | - | - | - | - | 6 |
| - | 1 | 1 | 1 | 1-2119757-8 | DEPRESSOR, SHEAR | 5 |
| - | 1 | 1 | 1 | 2-238011-5 | BLOCK, CRIMPER SPACER | 4 |
| - | 1 | 1 | 1 | 1803339-1 | CRIMPER, INSULATION F | 3 |
| - | - | - | - | - | - | 2 |
| - | 1 | 1 | 1 | 1-1803193-0 | CRIMPER, WIRE PREMIUM | 1 |

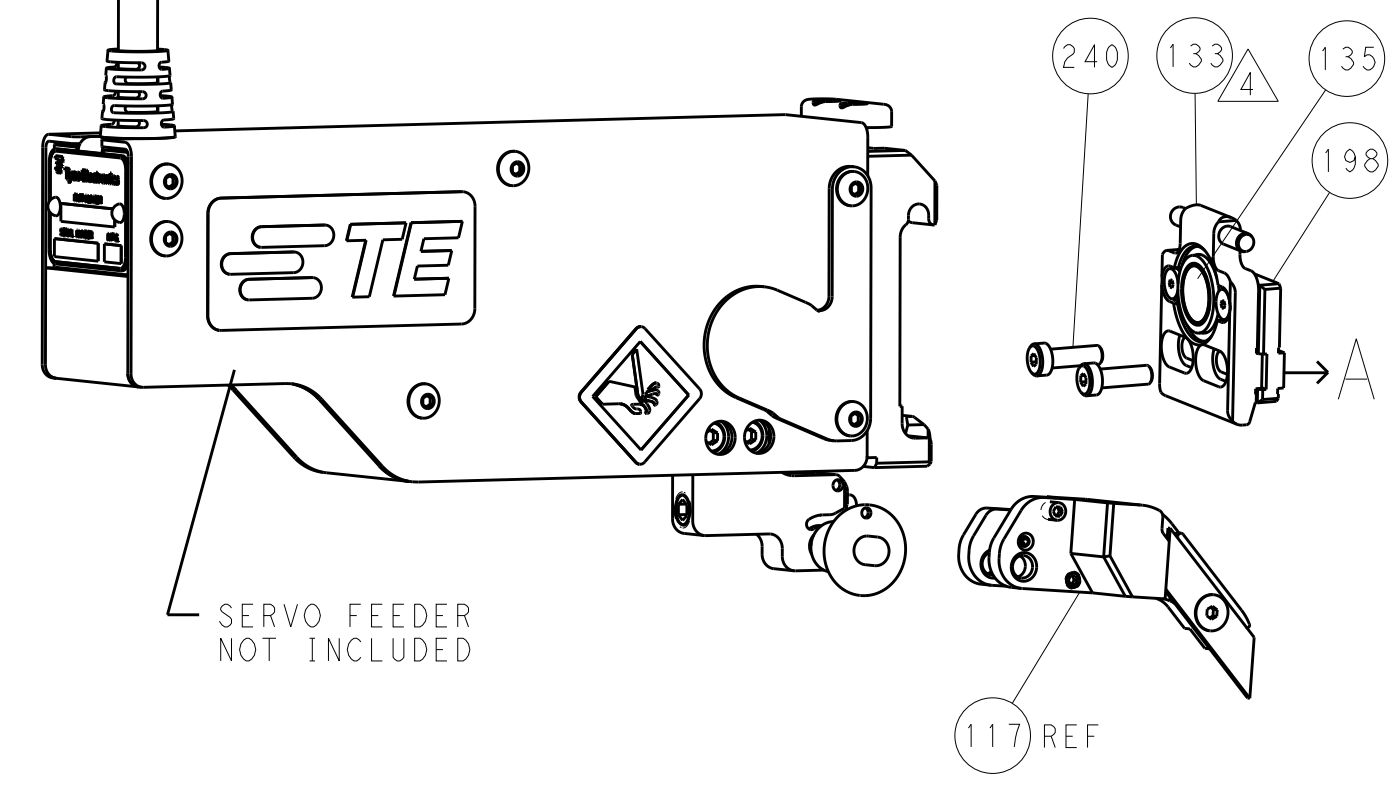
| DIMENSIONS: | TOLERANCES UNLESS OTHERWISE SPECIFIED: | OWN | CHK | DATE | NAME | PRODUCT SPEC | APPLICATION SPEC | SIZE | CAGE CODE | DRAWING NO | RESTRICTED TO | |
|-------------|---|---------|---------|-----------|-------|--------------|------------------|-----------|-----------|------------|---------------|--|
| mm | 0 PLC ± 1 PLC ± 2 PLC ± 3 PLC ± 4 PLC ± ANGLES ± | STE | C. CHEN | 02NOV2012 | S. XI | 02NOV2012 | 1 CRUZ | 02NOV2012 | A1 | 00779 | ©=2151515 | |
| MATERIAL: | FINISH: | WEIGHT: | | SCALE: | | SHEET: | | REV: | | | | |
| | | | | 1:2 | | 3 OF 4 | | E | | | | |

| LOC | | DIST | | REVISIONS | | | |
|-----|----|------|-----|-------------|------|-----|------|
| A | 66 | P | LTM | DESCRIPTION | DATE | DWN | APVD |
| | | - | | SEE SHEET 1 | | | |

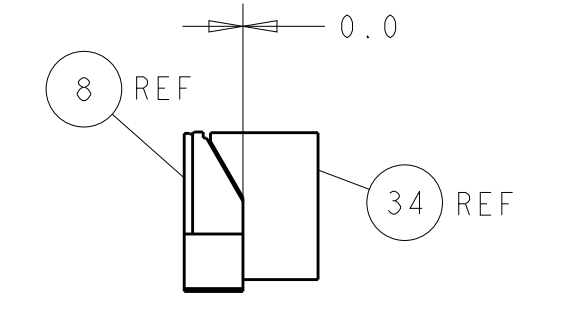
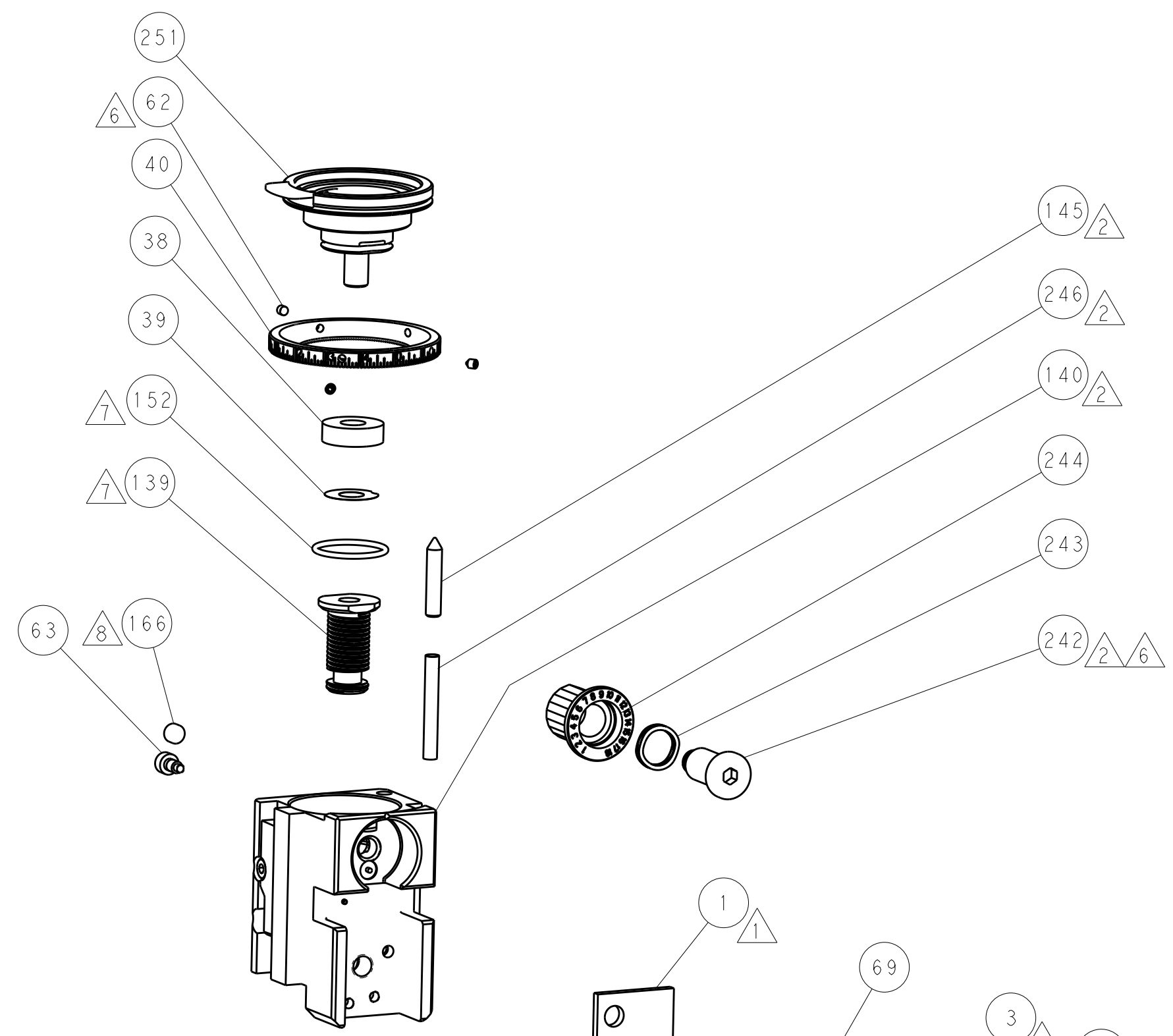
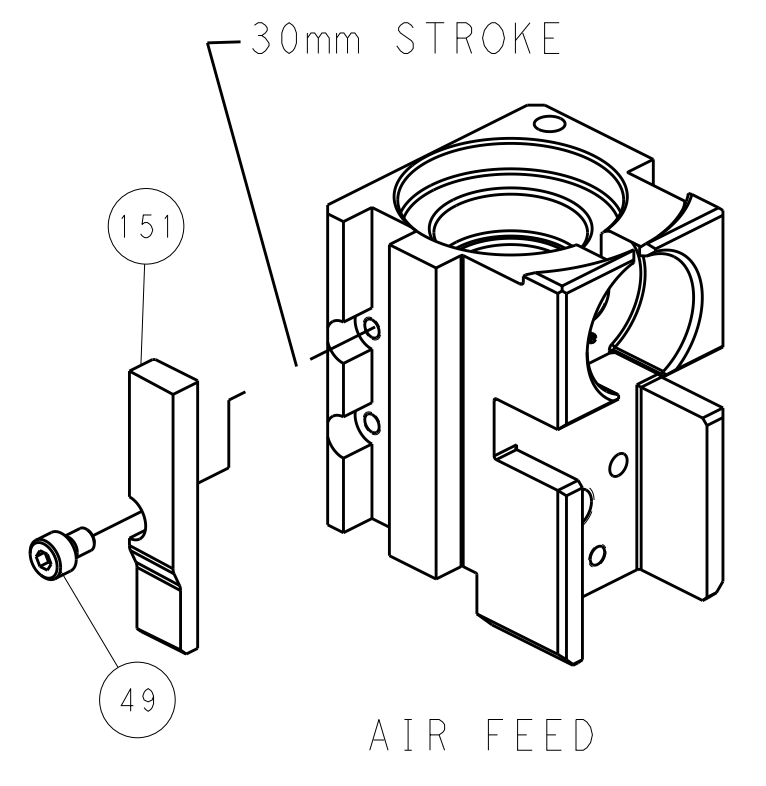
FEED TYPE PNEUMATIC



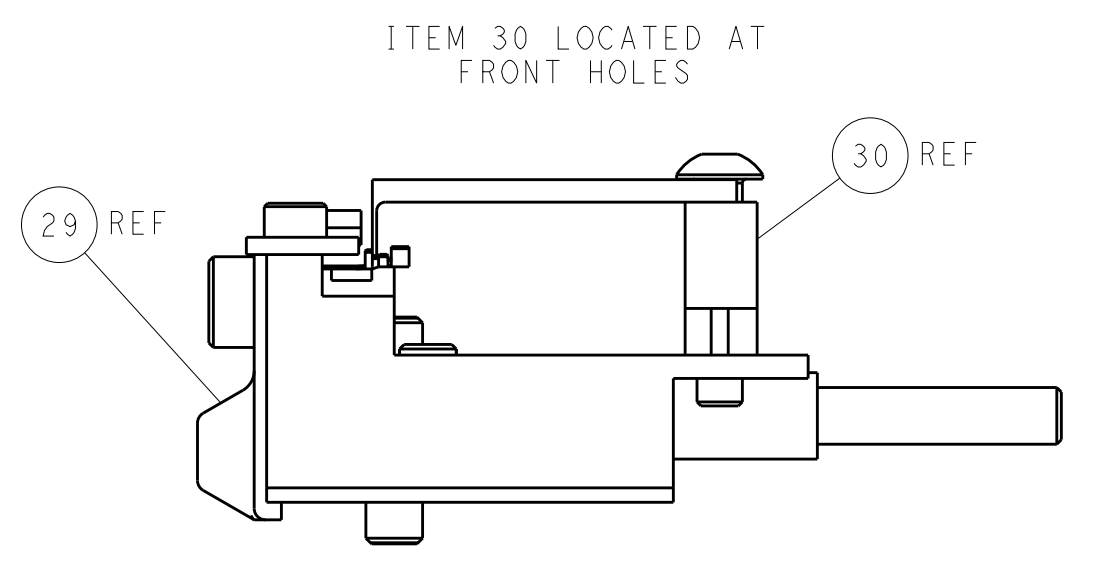
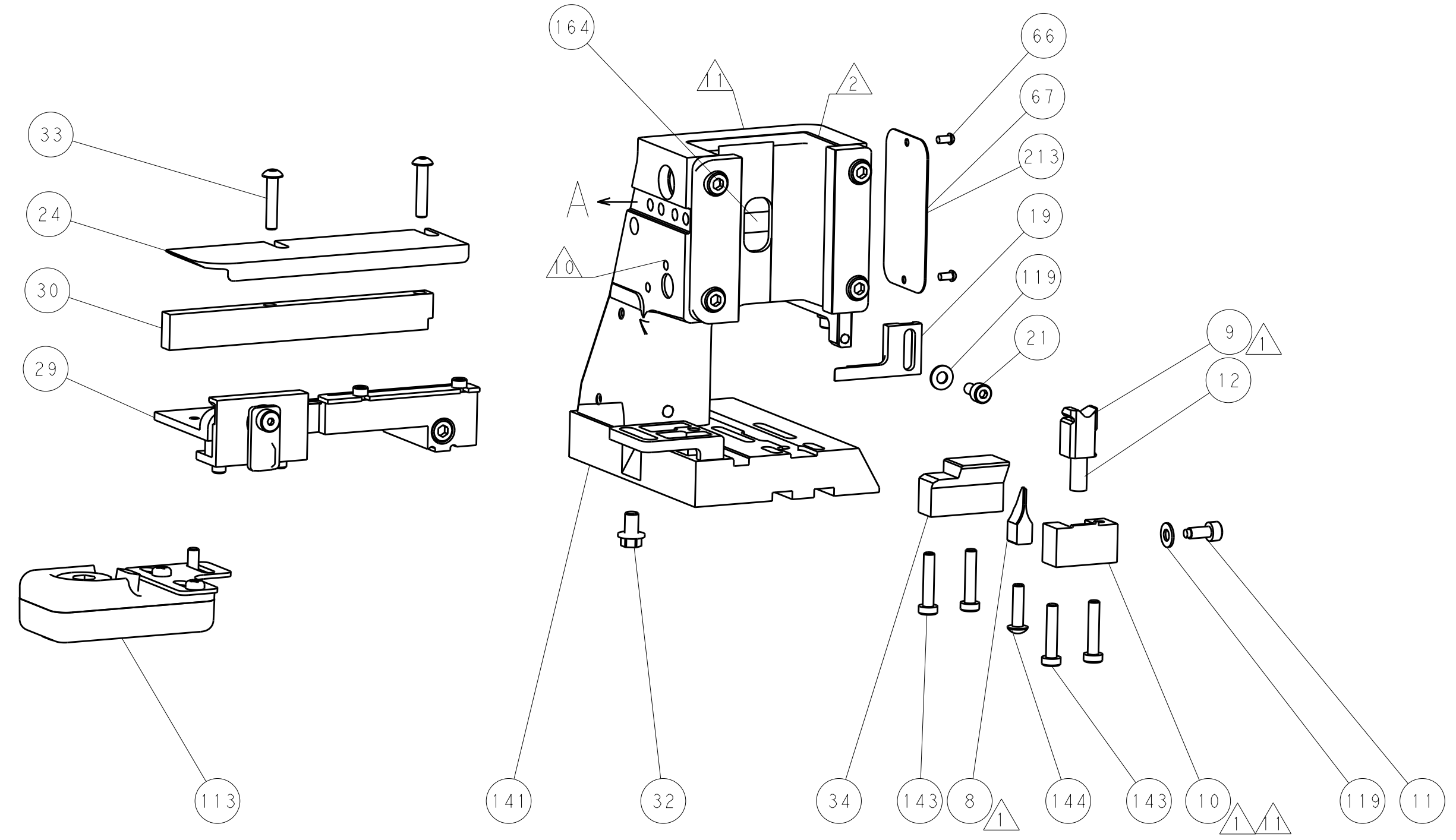
SERVO LATCH PLATE



CAM POSITIONS



TERMINAL SUPPORT LOCATION



FEED TRACK POSITION
GUIDE BY INSULATION BARREL

PACIFIC VERSION
 Shown on sheets 3 of 4 & 4 of 4
 (Atlantic version shown on sheets 1 of 4 & 2 of 4)

| | | | | | | | |
|--|---------|--|---------|--------------------------|---------------------------|--|---------------|
| DIMENSIONS: | | TOLERANCES UNLESS OTHERWISE SPECIFIED: | | DWN C. CHEN 02NOV2012 | | STE TE Connectivity Harrisburg, PA 17105-3608 | |
| mm | 0 PLC ± | 1 PLC ± | 2 PLC ± | 3 PLC ± | 4 PLC ± | NAME Ocean Side Feed Applicator | RESTRICTED TO |
| MATERIAL: | | FINISH: | | CHK S. XI 02NOV2012 | APVD J. CRUZ 02NOV2012 | SIZE A1 00779 ©=2151515 | SCALE 1:2 |
| Customer Accessible Production Drawing | | | | SHEET 4 OF 4 | | REV E | |