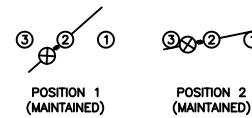


**SCHEMATIC**



**SPECIFICATIONS**

**FUNCTION:**  
1P1T OFF-ON

**RATINGS:**  
ANSI/UL 1054 and CAN/CSA C22.2 No. 55 (E194579):  
10A 125VAC [UR, cUR]  
EN 61058-1:2002:  
6A 250V~ μ 1E4 T85/55 [ENEC14]

**ILLUMINATION VOLTAGE:**  
12V

**CONTACT RESISTANCE:**  
Initial: 35mΩ Max. at 50VAC

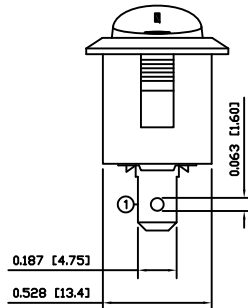
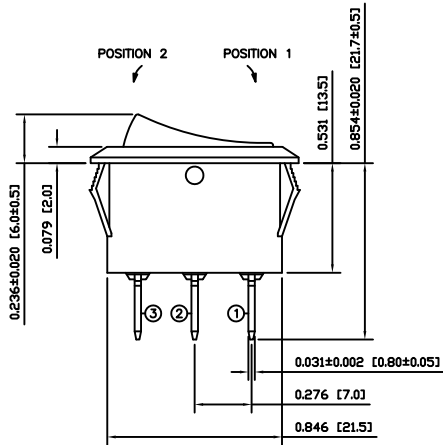
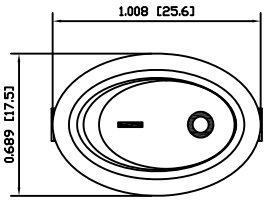
**INSULATION RESISTANCE:**  
100MΩ Min. at 500VDC

**DIELECTRIC STRENGTH:**  
1,500VAC For 1 Minute

**ELECTRICAL LIFE:**  
6,000 Cycles [UR, cUR]  
10,000 Cycles [ENEC14]

**TEMPERATURE:**  
Operating: -20°C to 105°C [UR, cUR]  
Operating: -20°C to 85°C [ENEC14]

**APPROVALS:**



**COLORS AND MARKINGS**

**BODY:**  
Black

**ACTUATOR:**  
Transparent Green

**MARKINGS:**  
I/O Vertical (1)

**MARKING COLOR:**  
White

**MATERIALS**

**BODY:**  
Polyamide 6/6 (PA66), UL94 V-2

**ACTUATOR:**  
Polycarbonate (PC), UL94 V-2

**LAMP CARRIER:**  
Polyamide 6/6 (PA66), UL94 V-2

**LAMP:**  
Incandescent Bulb

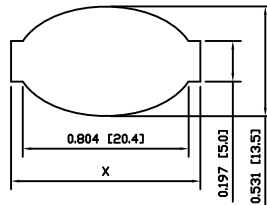
**SPRING:**  
Steel

**SPRING COVER:**  
Steel

**CONTACTS:**  
Silver Alloy Plated Copper

**TERMINALS:**  
Silver Plated Copper  
Silver Plated Brass  
Brass

**SUGGESTED PANEL CUTOUT**



| PANEL THICKNESS         | X            |
|-------------------------|--------------|
| 0.030~0.049 [0.75~1.25] | 0.917 [23.3] |
| 0.049~0.079 [1.25~2.00] | 0.929 [23.6] |
| 0.079~0.118 [2.00~3.00] | 0.941 [23.9] |

| ACTUATOR       | A    | 09/08/11 | CAB |
|----------------|------|----------|-----|
| BODY           | A    | 09/08/11 | CAB |
| COLORS         | A    | 09/08/11 | CAB |
| MATERIALS      | A    | 09/08/11 | CAB |
| SPECIFICATIONS | A    | 10/01/14 | CAB |
| REFERENCE      | REV. | DATE     | BY  |

THE INFORMATION CONTAINED IN THIS DOCUMENT IS PROPRIETARY TO E-SWITCH-LAMB INDUSTRIES AND IS NOT TO BE COPIED OR TRANSFERRED

| B    | REMOVED SEMKO RATING | 23441 | 07/12/18 | MJR      |
|------|----------------------|-------|----------|----------|
| A    | PROPOSED DESIGN      | 18780 | 10/01/14 | CAB      |
| REV. | DESCRIPTION          | PCR   | DATE     | DRAWN BY |

| DIMENSIONS           |            |
|----------------------|------------|
| INCHES [MILLIMETERS] |            |
| GENERAL TOLERANCES   |            |
| ±0.008 [±0.2] / ±1'  |            |
| SCALE                | PROJECTION |
| DRAWING NOT TO SCALE |            |

RE11131021-134

|                                    |                          |               |
|------------------------------------|--------------------------|---------------|
| DRAWING NUMBER<br>38-RE11131021134 | DATE<br>JANUARY 14, 2010 | REVISION<br>B |
|------------------------------------|--------------------------|---------------|