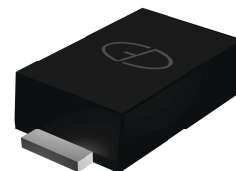


## Features

- Glass passivated standard rectifiers
- Very low profile - typical height of 1.0 mm
- Low forward voltage drop
- Low leakage current
- **Moisture sensitivity: level 1, per J-STD-020**
- AEC-Q101 qualified
- High temperature soldering guaranteed: 260°C/10 seconds
- Halogen-free according to IEC 61249-2-21 definition



Package: eSGA  
(SOD-123FL)



**RoHS**  
COMPLIANT

## Applications

For use of general purpose rectification in lighting, cellular phone, portable device, power supplies, and other consumer applications.

## Maximum Ratings (T<sub>A</sub>=25°C unless otherwise specified)

Parameter	Symbol	A1	A2	A3	A4	A5	A6	A7	Unit
Maximum Repetitive Peak Reverse Voltage	V <sub>RRM</sub>	50	100	200	400	600	800	1000	V
Maximum RMS Voltage	V <sub>RMS</sub>	35	70	140	280	420	560	700	V
Maximum DC Blocking Voltage	V <sub>DC</sub>	50	100	200	400	600	800	1000	V
Maximum Average Forward Rectified Current	I <sub>F(AV)</sub>	1.0							A
Peak Forward Surge Current (8.3 ms single half sine-wave superimposed on rated load)	I <sub>FSM</sub>	45							A
Operating Junction and Storage Temperature Range	T <sub>J</sub> , T <sub>STG</sub>	- 55 to + 150							°C

## Electrical Characteristics (T<sub>A</sub>=25°C unless otherwise specified)

Parameter	Test Conditions	Symbol	A1	A2	A3	A4	A5	A6	A7	Unit
Maximum Instantaneous Forward Voltage	1 A	V <sub>F</sub>	1.0						V	
Maximum DC Reverse Current at Rated DC Blocking Voltage	T <sub>A</sub> =25°C	I <sub>R</sub>	5						μA	
	T <sub>A</sub> =125°C		50							
Typical Reverse Recovery Time	I <sub>F</sub> =0.5A, I <sub>R</sub> =1.0A	t <sub>rr</sub>	1.8						μs	
	I <sub>rr</sub> =0.25A									
Typical Junction Capacitance	4.0 V, 1 MHz	C <sub>J</sub>	6						pF	

## Ratings and Characteristic Curves

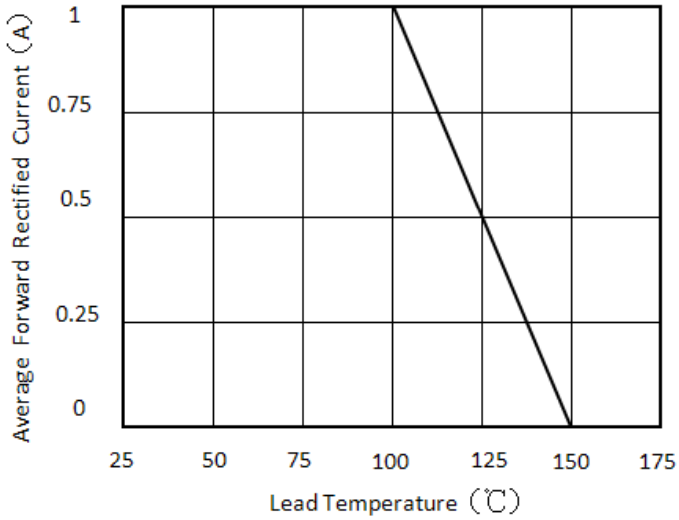


Figure 1. Forward Current Derating Curve

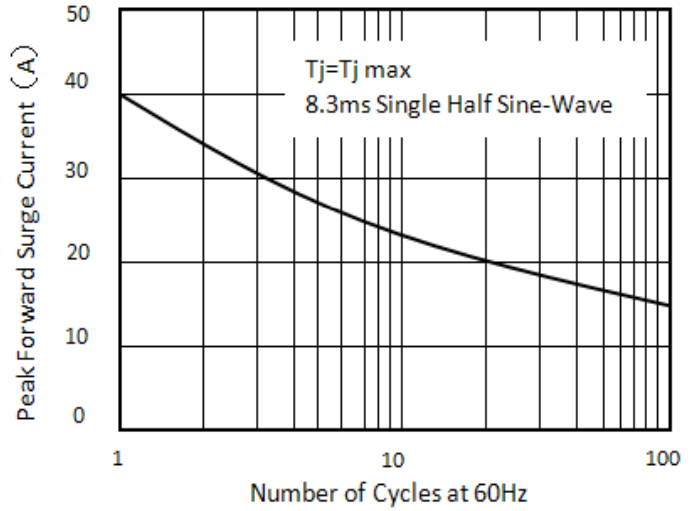


Figure 2. Maximum Non-Repetitive Peak Forward Surge Current

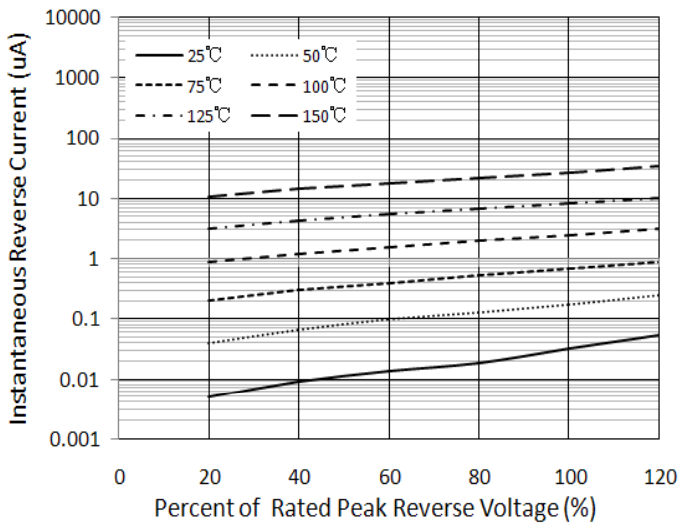


Figure 3. Typical Reverse Characteristics

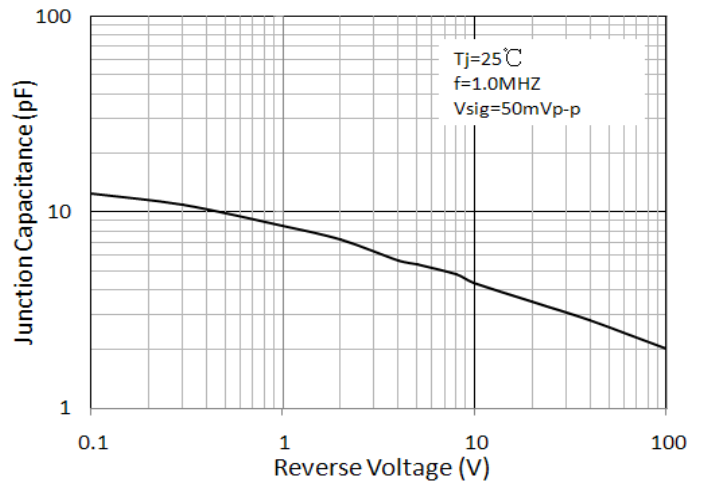


Figure 4. Typical Junction Capacitance

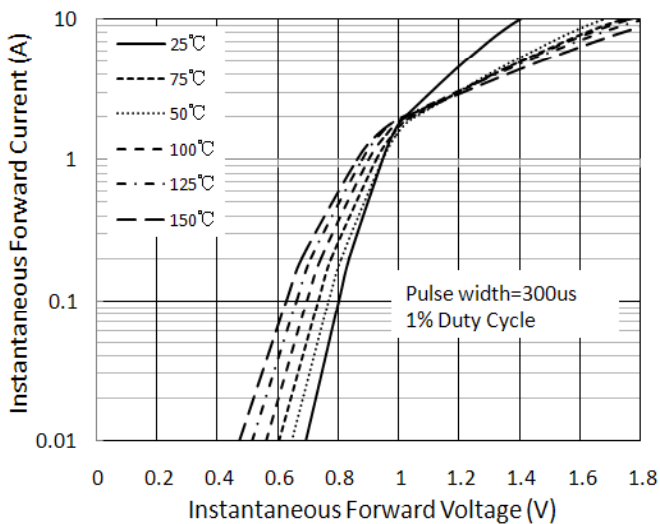
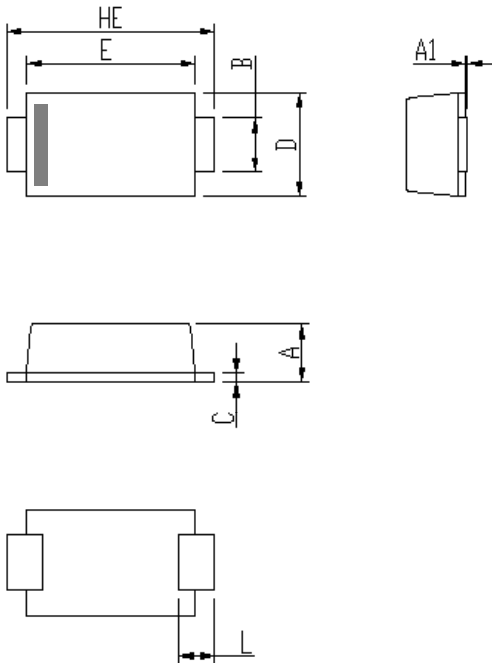


Figure 5. Typical Instantaneous Forward Characteristics

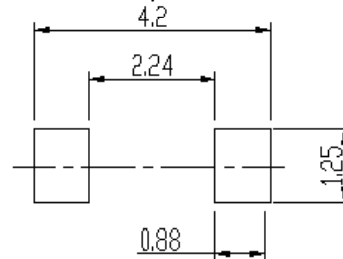
## Package Outline Dimensions

eSGA (SOD-123FL)



DIM	Unit: mm		Unit: inch	
	MIN	MAX	MIN	MAX
A	0.9	1.08	0.035	0.043
A1	0	0.1	0.000	0.004
B	0.85	1.05	0.033	0.041
C	0.1	0.25	0.004	0.010
D	1.7	2	0.067	0.079
E	2.9	3.1	0.114	0.122
L	0.43	0.83	0.017	0.033
HE	3.5	3.9	0.138	0.154

Soldering footprint



## Packing Information

**Packing quantities:**

3000 pcs/Reel, 40 Reels/Box; 8mm Tape, 7" Reel

**Tape & Reel Specification**

