

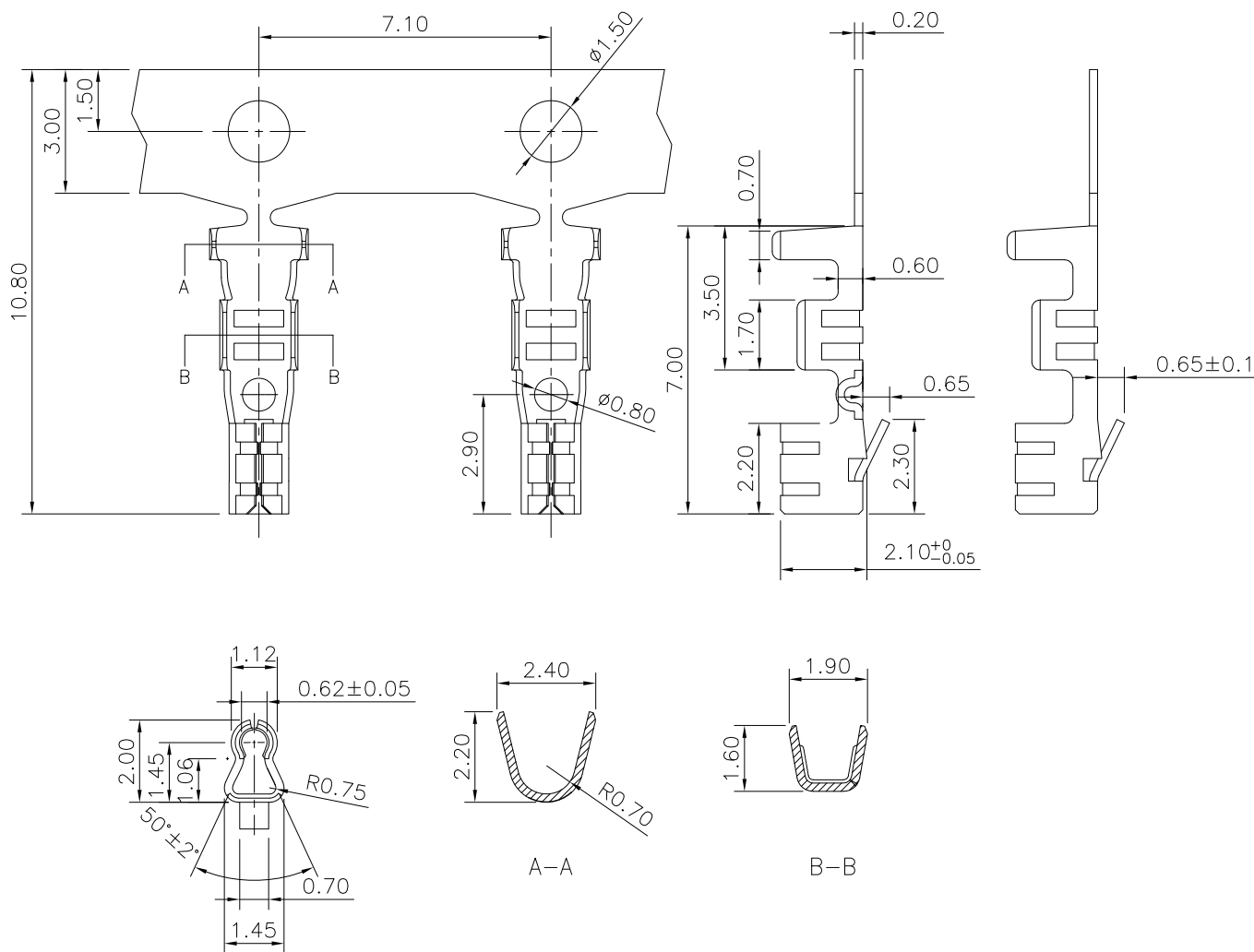
1

2

3

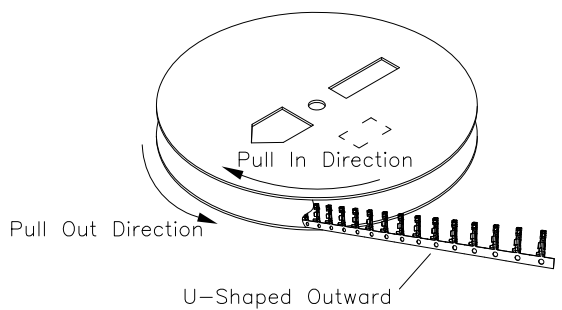
4

5



Specifications:
 Current Rating:3.0A AC,DC
 Voltage Rating:250V AC,DC
 Contact Resistance:20mohm Max
 Insulation Resistance:1000Mohm Min.
 Withstanding Voltage:1000V AC/minute
 Operating Temperature Range:-25°C~+85°C
 Application Wires:AWG22 to 28
 Mate With 52225 Series Housing

Material and Finish
 Contact:Phosphor Bronze
 Finish:Tin Plated



RoHS Compliant

REV	DATE	FILE	BY
	17-Nov-2020		

DRAWN:
 CHECKED:
 APPROVAL:

GENERAL TOLERANCE:
 .X=±0.20
 .XX=±0.15
 UNIT: MM
 SCALE:1:1
 SHEET: 1 / 2
 PROJECTION:

CnC Tech
 Industrial Cable and Connector Technology
 DESCRIPTION: Wire-To Board Housing Terminal,2.5mm,M Series
 PART NO: 52325

SIZE
 A4

A

B

C

D