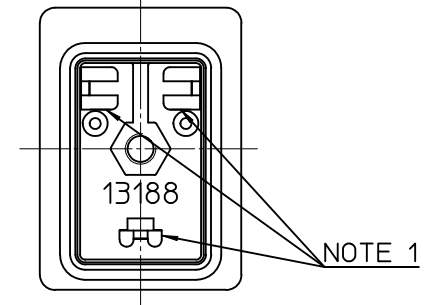
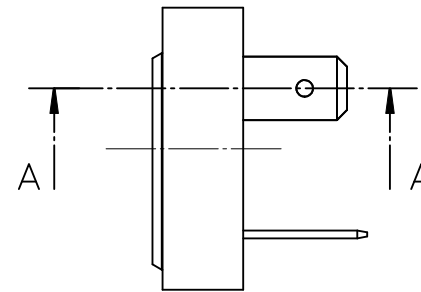
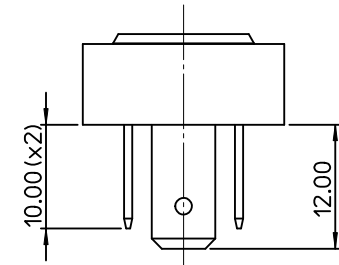
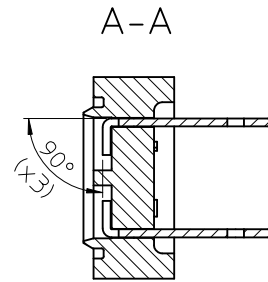
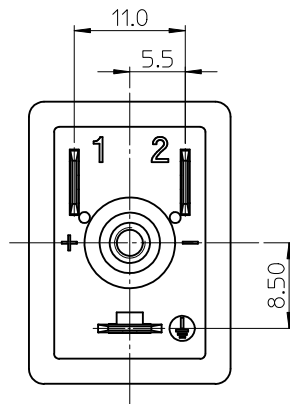
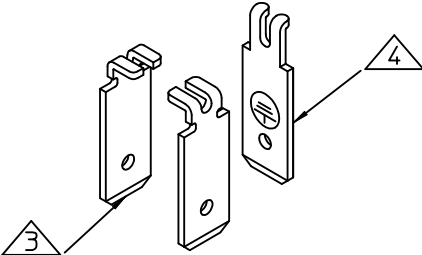
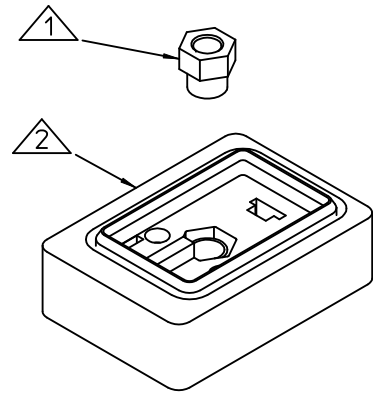


SAP PART NO	WOODHEAD PN:
1210130110	B482000N0

Item No.	Description	Q.Ty. Pieces	SAP PN:
1	SCREW INSERT	1	1211190158
2	BASE HOUSING	1	1211220167
3	LIVE TERMINALS	2	1211200122
4	EARTH TERMINAL	1	1211200126



NOTES:
1. TERMINAL TO BE BENT AFTER INSERTION

CHANGE TERMINALS HEIGHT	DESCRIPTION
EC NO: IPG2012-0638	DRWN: JMARSZALEK 2012/03/29
CHKD:	APPR: GRIZZO 2012/04/11
REV	

QUALITY SYMBOLS
▽=0
∇=0

GENERAL TOLERANCES (UNLESS SPECIFIED)	mm	INCH
	4 PLACES ± ---	± ---
	3 PLACES ± ---	± ---
	2 PLACES ± 0.10	± ---
	1 PLACE ± 0.2	± ---
	ANGULAR ± ---°	
DRAFT WHERE APPLICABLE MUST REMAIN WITHIN DIMENSIONS		

DIMENSION STYLE		SCALE	DESIGN UNITS	FIRST ANGLE PROJECTION
MM ONLY		-	METRIC	
DRAWN BY	DATE	TITLE		
JMARSZALEK	2012/02/28	DIN 11MM BASE		
CHECKED BY	DATE			
APPROVED BY	DATE			
MATERIAL NO.	DOCUMENT NO.	SHEET NO.		
1210130110	SD-121013-001	1 OF 1		
SIZE	THIS DRAWING CONTAINS INFORMATION THAT IS PROPRIETARY TO MOLEX INCORPORATED AND SHOULD NOT BE USED WITHOUT WRITTEN PERMISSION			
A3				

MOLEX INCORPORATED	
--------------------	--