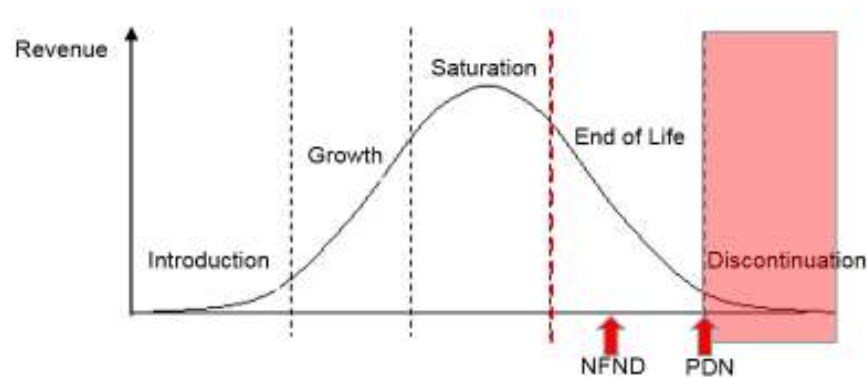


Light is OSRAM

Product Discontinuation (acc. JEDEC J-STD-048) OS-PD-2017-037

7/3/2017

| | |
|-----------------------|----------------------|
| Last order: | 3/1/2018 |
| Last delivery: | 9/1/2018 |
| Reason: | Portfolio Streamline |



Please direct your feedback to your local Sales office.

| DISCONTINUED | | | | NEW (REPLACEMENT) | | | |
|-------------------------------------|---------------|------------|--------------------------------|--|----------------------------|----------|--------------------------------|
| Device | Ordering Code | Function | Brand | Device | Datasheet Ordering Code | Function | Brand |
| Whole Devices | | | | | | | |
| KB HAVPA1.12 | all | LED | DISPLIX Oval | | | | |
| KB HAVPA1.12-UUVT-FKT1-20-L-ZO | Q65112A1063 | LED | DISPLIX Oval | no direct replacement | | | |
| KB HAVPA1.12-UUVT-FKT1-20-L-ZO | Q65112A1070 | LED | DISPLIX Oval | no direct replacement | | | |
| KB HAVPA1.12-UUVT-FKT1-20-R33-Z | Q65111A5180 | LED | DISPLIX Oval | no direct replacement | | | |
| KB HAVPA1.12-UVUX-KPQV-20-L-ZO | Q65112A1064 | LED | DISPLIX Oval | no direct replacement | | | |
| KB HAVPA1.12-UVUX-KPQV-20-L-ZO | Q65112A1071 | LED | DISPLIX Oval | no direct replacement | | | |
| KB HAVPA1.12-UVUY-HMMS-20-R18-ZO-XX | Q65111A6167 | LED | DISPLIX Oval | no direct replacement | | | |
| | | | | | | | |
| KR HAVPA1.22 | all | LED | DISPLIX Oval | | | | |
| KR HAVPA1.22-ASAV-DQ-20-L-ZO | Q65112A1059 | LED | DISPLIX Oval | no direct replacement | | | |
| KR HAVPA1.22-ASAV-DQ-20-L-ZO | Q65112A1066 | LED | DISPLIX Oval | no direct replacement | | | |
| KR HAVPA1.22-VWAV-DQ-20-L-ZO | Q65112A1058 | LED | DISPLIX Oval | no direct replacement | | | |
| KR HAVPA1.22-VWAV-DQ-20-L-ZO | Q65112A1065 | LED | DISPLIX Oval | no direct replacement | | | |
| KR HAVPA1.22-VWAV-DQ-20-R33-Z | Q65111A5179 | LED | DISPLIX Oval | no direct replacement | | | |
| KR HAVPA1.22-VYAU-DQ-20-R18-ZO-XX | Q65111A6166 | LED | DISPLIX Oval | no direct replacement | | | |
| | | | | | | | |
| KT HAVPA 1.12 | all | LED | DISPLIX Oval | | | | |
| KT HAVPA1.12-BVBZ-LRU3-20-R18-ZO-XX | Q65111A6165 | LED | DISPLIX Oval | no direct replacement | | | |
| KT HAVPA1.12-BVCU-DJ18-20-L-ZO | Q65112A1060 | LED | DISPLIX Oval | no direct replacement | | | |
| KT HAVPA1.12-BVCU-DJ18-20-L-ZO | Q65112A1067 | LED | DISPLIX Oval | no direct replacement | | | |
| KT HAVPA1.12-BVCU-DJ18-20-R33-Z | Q65111A5178 | LED | DISPLIX Oval | no direct replacement | | | |
| KT HAVPA1.12-BVCU-JPRW-20-L-ZO | Q65112A1061 | LED | DISPLIX Oval | no direct replacement | | | |
| KT HAVPA1.12-BVCU-JPRW-20-L-ZO | Q65112A1068 | LED | DISPLIX Oval | no direct replacement | | | |
| KT HAVPA1.12-BVCU-PU18-20-L-ZO | Q65112A1062 | LED | DISPLIX Oval | no direct replacement | | | |
| KT HAVPA1.12-BVCU-PU18-20-L-ZO | Q65112A1069 | LED | DISPLIX Oval | no direct replacement | | | |
| | | | | | | | |
| KY HAVPA 1.22 | all | LED | DISPLIX Oval | | | | |
| KY HAVPA1.22-VUAV-JPQV-20-R33-Z | Q65111A5177 | LED | DISPLIX Oval | no direct replacement | | | |
| KY HAVPA1.22-VWAV-JP-20-L-Z | Q65112A1209 | LED | DISPLIX Oval | no direct replacement | | | |
| KY HAVPA1.22-VWAV-JPMS-20-L-ZO | Q65112A1073 | LED | DISPLIX Oval | no direct replacement | | | |
| KY HAVPA1.22-VWAV-MS-20-L-Z | Q65112A1210 | LED | DISPLIX Oval | no direct replacement | | | |
| | | | | | | | |
| CW VHLPD1.EN | all | LED | CERAMOS Gen C 4 | | | | |
| CW VHLPD1.EN-MYMZ-L1-0-A00-R18 | Q65111A8680 | LED | CERAMOS Gen C 4 | CW VHLPD2.EN-MYMZ-L1-0-A00-R18 | in process | LED | CERAMOS Gen C 4 |
| | | | | | | | |
| | | | | | | | |
| Single Q# | | | | | | | |
| LE B Q8WP-7A6B-W4 | Q65111A8223 | LED | OSRAM OSTAR Projection Compact | LE B Q8WP-8A7B-24 LE B Q8WP-8A7B-VW | Q65112A4116 Q65112A4115 | LED | OSRAM OSTAR Projection Compact |
| LE UW Q8WP-NAPA-BQ-0-A40-R18-Z | Q65111A8408 | LED | OSRAM OSTAR Projection Compact | LE UW Q8WP-NBPB-BQ-0-A40-R18-Z | Q65112A4111 | LED | OSRAM OSTAR Projection Compact |
| | | | | | | | |
| CW VHLPD2.EN-HXHZ-L2-0-100-S | Q65112A2927 | LED | CERAMOS Gen C 1 | CW VHLPD2.EN-MYMZ-L1-0-A00-R18 | in process | LED | CERAMOS Gen C 4 |
| | | | | | | | |

Products Affected by Product Discontinuation Notification

Number: OS-PD-2017-037

Name: Product Portfolio Streamline Discontinuation

Release Date: 7/3/2017

Last Order: 3/1/2018

Last Delivery: 9/1/2018

DISCONTINUED

NEW (REPLACEMENT)

| <i>Product</i> | <i>QNumber</i> | <i>QNumber Description</i> | <i>Part Number</i> | <i>Product</i> | <i>QNumber</i> | <i>QNumber Description</i> | <i>Part Number</i> |
|----------------|----------------|-------------------------------------|-----------------------------|----------------|----------------|------------------------------------|--------------------|
| CW VHLPD1. | Q65111A8680 | CW VHLPD1.EN-MYMZ-L1-0-A00-R18 | CW VHLPD1.EN-MYMZ-L1 | CW VHLPD2. | in process | CW VHLPD2.EN-MYMZ-L1-0-A00-R18 | |
| CW VHLPD2. | Q65112A2927 | CW VHLPD2.EN-HXHZ-L2-0-100-S | | CW VHLPD2. | in process | CW VHLPD2.EN-MYMZ-L1-0-A00-R18 | |
| KB HAVPA1. | Q65111A5180 | KB HAVPA1.12-UUVT-FKT1-20-R33-Z | KB HAVPA1.12-UUVT-FKT1 | | no direct repl | no direct replacement | |
| KB HAVPA1. | Q65111A6167 | KB HAVPA1.12-UVUY-HMMS-20-R18-ZO-XX | KB HAVPA1.12-UVUY-HMMS-XX | | no direct repl | no direct replacement | |
| KB HAVPA1. | Q65112A1063 | KB HAVPA1.12-UUVT-FKT1-20-L-ZO | KB HAVPA1.12-UUVT-FKT1-L-ZO | | no direct repl | no direct replacement | |
| KB HAVPA1. | Q65112A1064 | KB HAVPA1.12-UVUX-KPQV-20-L-ZO | KB HAVPA1.12-UVUX-KPQV-L-ZO | | no direct repl | no direct replacement | |
| KB HAVPA1. | Q65112A1070 | KB HAVPA1.12-UUVT-FKT1-20-L-ZO | | | no direct repl | no direct replacement | |
| KB HAVPA1. | Q65112A1071 | KB HAVPA1.12-UVUX-KPQV-20-L-ZO | | | no direct repl | no direct replacement | |
| KR HAVPA1. | Q65111A5179 | KR HAVPA1.22-VWAV-DQ-20-R33-Z | KR HAVPA1.22-VWAV-DQ | | no direct repl | no direct replacement | |
| KR HAVPA1. | Q65111A6166 | KR HAVPA1.22-VYAU-DQ-20-R18-ZO-XX | KR HAVPA1.22-VYAU-DQ-XX | | no direct repl | no direct replacement | |
| KR HAVPA1. | Q65112A1058 | KR HAVPA1.22-VWAV-DQ-20-L-ZO | KR HAVPA1.22-VWAV-DQ-L-ZO | | no direct repl | no direct replacement | |
| KR HAVPA1. | Q65112A1059 | KR HAVPA1.22-ASAV-DQ-20-L-ZO | KR HAVPA1.22-ASAV-DQ-L-ZO | | no direct repl | no direct replacement | |
| KR HAVPA1. | Q65112A1065 | KR HAVPA1.22-VWAV-DQ-20-L-ZO | | | no direct repl | no direct replacement | |
| KR HAVPA1. | Q65112A1066 | KR HAVPA1.22-ASAV-DQ-20-L-ZO | | | no direct repl | no direct replacement | |
| KT HAVPA1. | Q65111A5178 | KT HAVPA1.12-BVCU-DJ18-20-R33-Z | KT HAVPA1.12-BVCU-DJ18 | | no direct repl | no direct replacement | |
| KT HAVPA1. | Q65111A6165 | KT HAVPA1.12-BVBZ-LRU3-20-R18-ZO-XX | KT HAVPA1.12-BVBZ-LRU3-XX | | no direct repl | no direct replacement | |
| KT HAVPA1. | Q65112A1060 | KT HAVPA1.12-BVCU-DJ18-20-L-ZO | KT HAVPA1.12-BVCU-DJ18-L-ZO | | no direct repl | no direct replacement | |
| KT HAVPA1. | Q65112A1061 | KT HAVPA1.12-BVCU-JPRW-20-L-ZO | KT HAVPA1.12-BVCU-JPRW-L-ZO | | no direct repl | no direct replacement | |
| KT HAVPA1. | Q65112A1062 | KT HAVPA1.12-BVCU-PU18-20-L-ZO | KT HAVPA1.12-BVCU-PU18-L-ZO | | no direct repl | no direct replacement | |
| KT HAVPA1. | Q65112A1067 | KT HAVPA1.12-BVCU-DJ18-20-L-ZO | | | no direct repl | no direct replacement | |
| KT HAVPA1. | Q65112A1068 | KT HAVPA1.12-BVCU-JPRW-20-L-ZO | | | no direct repl | no direct replacement | |
| KT HAVPA1. | Q65112A1069 | KT HAVPA1.12-BVCU-PU18-20-L-ZO | | | no direct repl | no direct replacement | |
| KY HAVPA1. | Q65111A5177 | KY HAVPA1.22-VUAV-JPQV-20-R33-Z | KY HAVPA1.22-VUAV-JPQV | | no direct repl | no direct replacement | |
| KY HAVPA1. | Q65112A1073 | KY HAVPA1.22-VWAV-JPMS-20-L-ZO | KY HAVPA1.22-VWAV-JPMS-L-ZO | | no direct repl | no direct replacement | |
| KY HAVPA1. | Q65112A1209 | KY HAVPA1.22-VWAV-JP-20-L-Z | KY HAVPA1.22-VWAV-JP-Z | | no direct repl | no direct replacement | |
| KY HAVPA1. | Q65112A1210 | KY HAVPA1.22-VWAV-MS-20-L-Z | KY HAVPA1.22-VWAV-MS-Z | | no direct repl | no direct replacement | |
| LE B Q8WP | Q65111A8223 | LE B Q8WP-7A6B-W4 | LE B Q8WP-7A6B-W4 | LE B Q8WP | Q65112A4116 | LE B Q8WP-8A7B-24LE B Q8WP-8A7B-VW | |
| LE UW Q8W | Q65111A8408 | LE UW Q8WP-NAPA-BQ-0-A40-R18-Z | LE UW Q8WP-NAPA-BQ | LE UW Q8W | Q65112A4111 | LE UW Q8WP-NBPB-BQ-0-A40-R18-Z | |