



85 West Algonquin Road  
Suite 230  
Arlington Heights, IL 60005

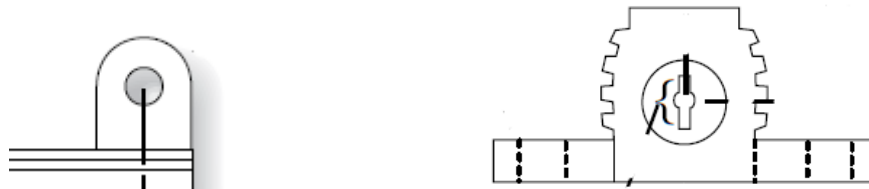
4 June 2015

## Product Change Notice

Sub: 89 Series Resistors Dimensional Changes  
Effective date: 1 August 2015

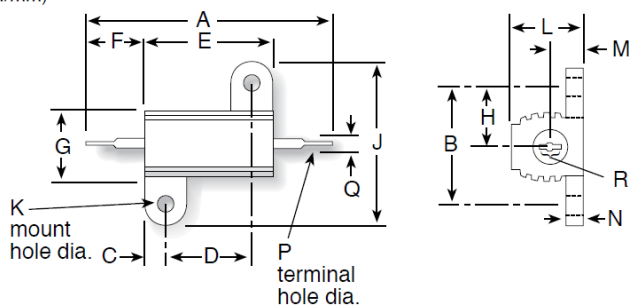
Ohmite announces dimensional changes to the 89 series of resistors. These changes are reflected on the mounting tabs and extrusion profiles. Foot design changes are from the (Old) rounded foot design to a (New) squared design. The changes are also seen in the extrusion profile. These changes have no effect on Fit, Form or Function of the parts. All new parts can be mounted in existing applications with no modifications. Part numbering will not change. Old and New dimensions are listed below for reference and are not to scale.

### Old:



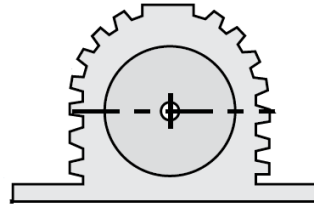
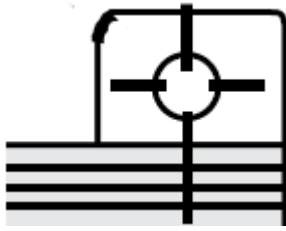
## DIMENSIONS

(in./mm)



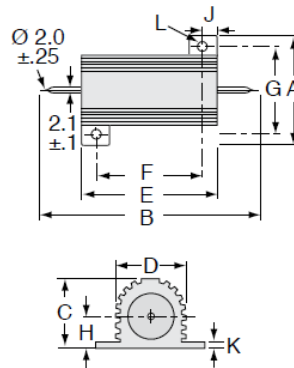
	5 watt	10 watt	25 watt	50 watt
<b>Series (Industrial)</b>	<b>805</b>	<b>810</b>	<b>825</b>	<b>850</b>
Dim. A (in. $\pm 0.062$ / mm $\pm 1.57$ )	1.125 / 28.59	1.375 / 34.93	1.938 / 49.23	2.781 / 70.64
Dim. B (in. $\pm 0.010$ / mm $\pm 0.25$ )	0.490 / 12.45	0.625 / 15.88	0.781 / 19.84	0.844 / 21.44
Dim. C (in. $\pm 0.031$ / mm $\pm 0.79$ )	0.078 / 1.98	0.094 / 2.39	0.172 / 4.37	0.188 / 4.78
Dim. D (in. $\pm 0.010$ / mm $\pm 0.25$ )	0.444 / 11.28	0.562 / 14.28	0.719 / 18.26	1.562 / 39.68
Dim. E (in. $\pm 0.062$ / mm $\pm 1.57$ )	0.600 / 15.24	0.750 / 19.05	1.062 / 26.98	1.938 / 49.23
Dim. F (in. $\pm 0.062$ / mm $\pm 1.57$ )	0.266 / 6.76	0.312 / 7.93	0.438 / 11.13	0.438 / 11.13
Dim. G (in. $\pm 0.062$ / mm $\pm 1.57$ )	0.334 / 8.48	0.438 / 11.13	0.531 / 13.49	0.594 / 15.09
Dim. H (in. $\pm 0.031$ / mm $\pm 0.79$ )	0.245 / 6.22	0.312 / 7.93	0.391 / 9.93	0.422 / 10.72
Dim. J (in. $\pm 0.031$ / mm $\pm 0.79$ )	0.646 / 16.41	0.812 / 20.63	1.094 / 27.79	1.156 / 29.36
Dim. K (in. $\pm 0.005$ / mm $\pm 0.13$ )	0.093 / 2.36	0.094 / 2.39	0.125 / 3.18	0.125 / 3.18
Dim. L (in. $\pm 0.031$ / mm $\pm 0.79$ )	0.320 / 8.13	0.406 / 10.31	0.562 / 14.28	0.625 / 15.88
Dim. M (in. $\pm 0.062$ / mm $\pm 1.57$ )	0.133 / 3.38	0.203 / 5.16	0.281 / 7.14	0.312 / 7.92
Dim. N (in. $\pm 0.031$ / mm $\pm 0.79$ )	0.065 / 1.65	0.094 / 2.39	0.094 / 2.39	0.094 / 2.39
Dim. P (in. $\pm 0.005$ / mm $\pm 0.13$ )	0.050 / 1.27	0.085 / 2.16	0.085 / 2.16	0.085 / 2.16
Q min AWG	16	12	12	12
Dim. R (in., min/mm, min)	0.085 / 2.16	0.140 / 3.56	0.140 / 3.56	0.140 / 3.56

**New:**



**DIMENSIONS**

(in./mm)



	A max.	B max.	C max.	D max.	E max.	F ±.3mm	G ±.3mm	H max.	J max.	K max.	L ±.25mm
805	0.65" / 16.5	1.18" / 30.0	0.35" / 8.8	0.33" / 8.5	0.63" / 15.9	0.44" / 11.3	0.49" / 12.4	0.18" / 4.5	0.09" / 2.4	0.07" / 1.8	0.09" / 2.4
810	0.83" / 21.0	1.44" / 36.5	0.43" / 11.0	0.44" / 11.2	0.78" / 19.9	0.56" / 14.3	0.63" / 15.9	0.22" / 5.5	0.11" / 2.8	0.07" / 1.8	0.09" / 2.4
825	1.10" / 28.0	2.01" / 51.0	0.58" / 14.8	0.56" / 14.2	1.07" / 27.3	0.72" / 18.3	0.78" / 19.8	0.30" / 7.7	0.20" / 5.2	0.10" / 2.6	0.13" / 3.2
850	1.10" / 28.0	2.85" / 72.5	0.58" / 14.8	0.56" / 14.2	1.93" / 49.1	1.56" / 39.7	0.84" / 21.4	0.33" / 8.4	0.20" / 5.2	0.10" / 2.6	0.13" / 3.2

Best Regards,

Brandon Metzger  
Product Manager

Cc: Kirk Schwiebert-Director of Product Development

Information, data and drawings embodied in this correspondence are strictly confidential and are supplied on the understanding that they will be held confidentially and not disclosed to third parties without the prior written consent of Ohmite Manufacturing Company, Inc.