

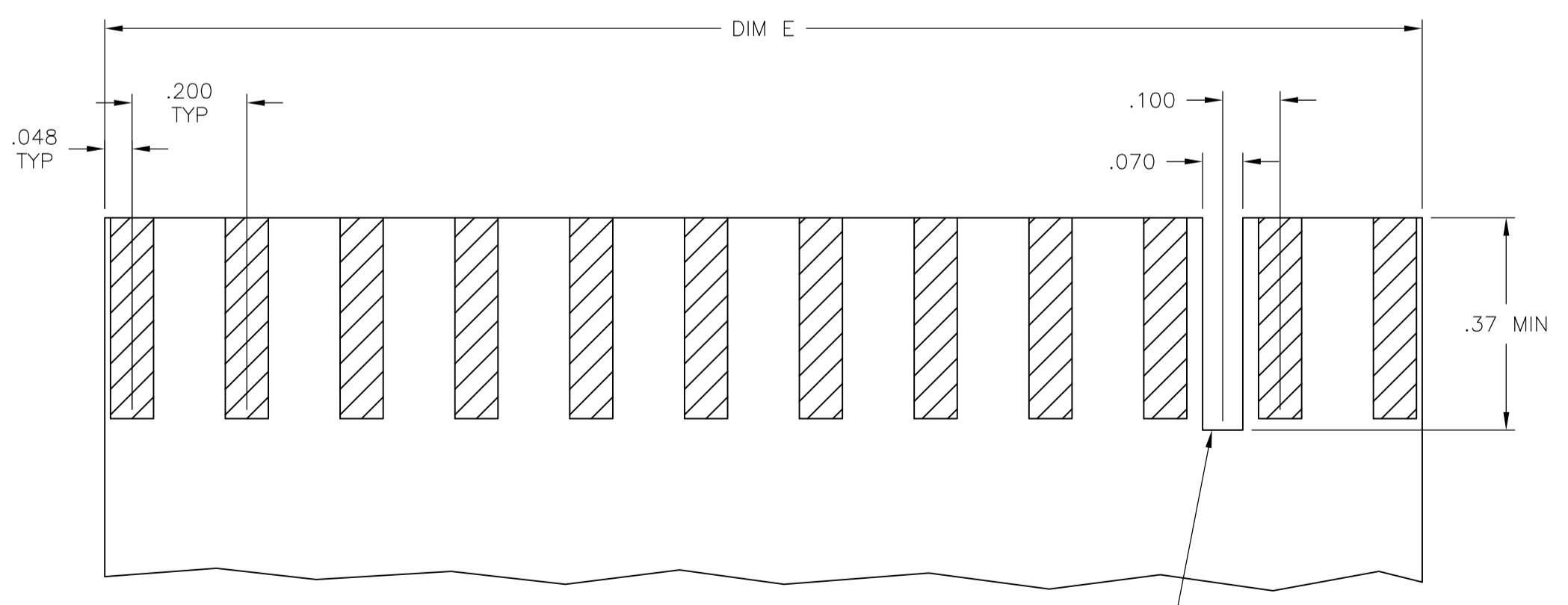
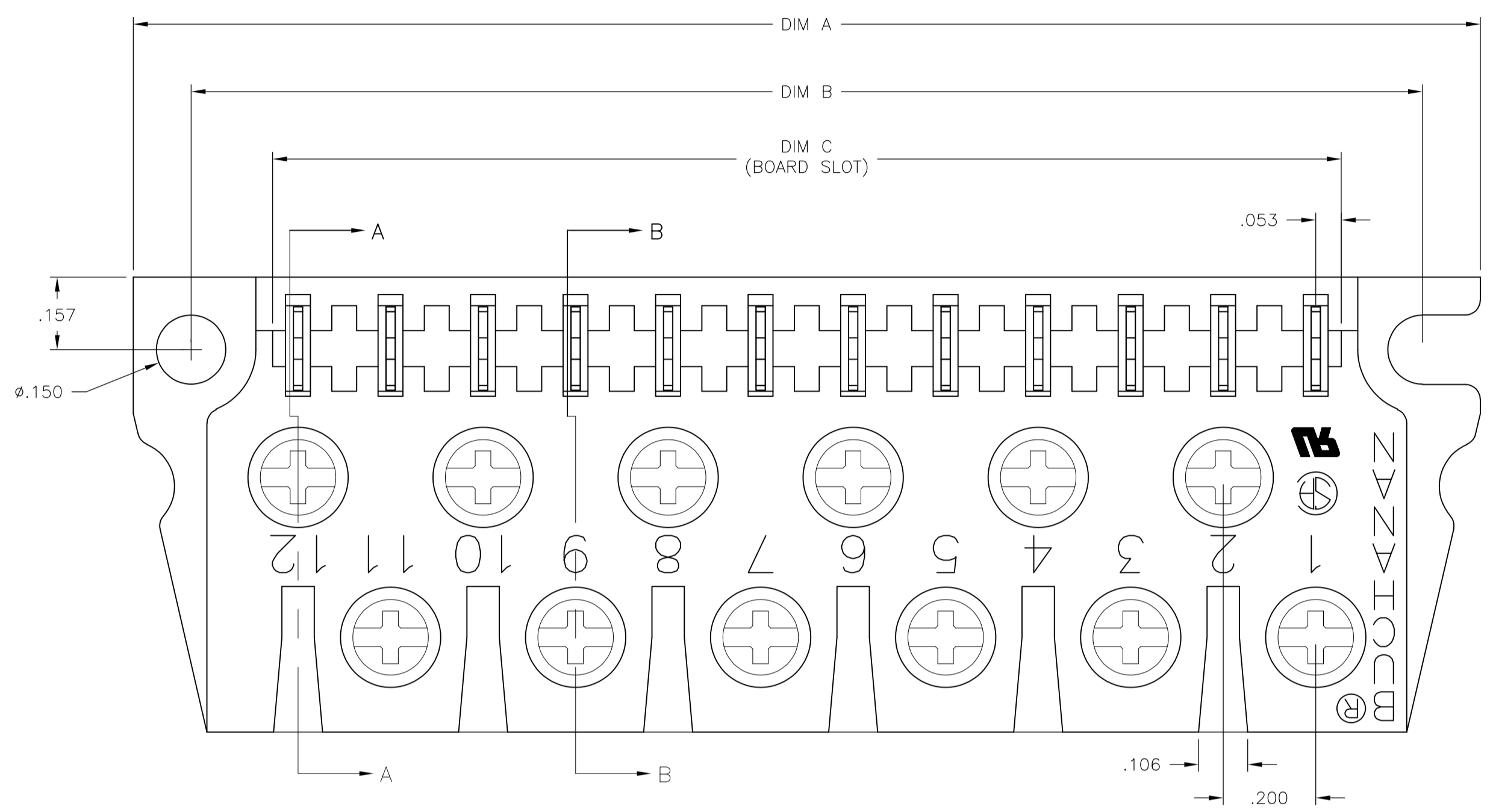
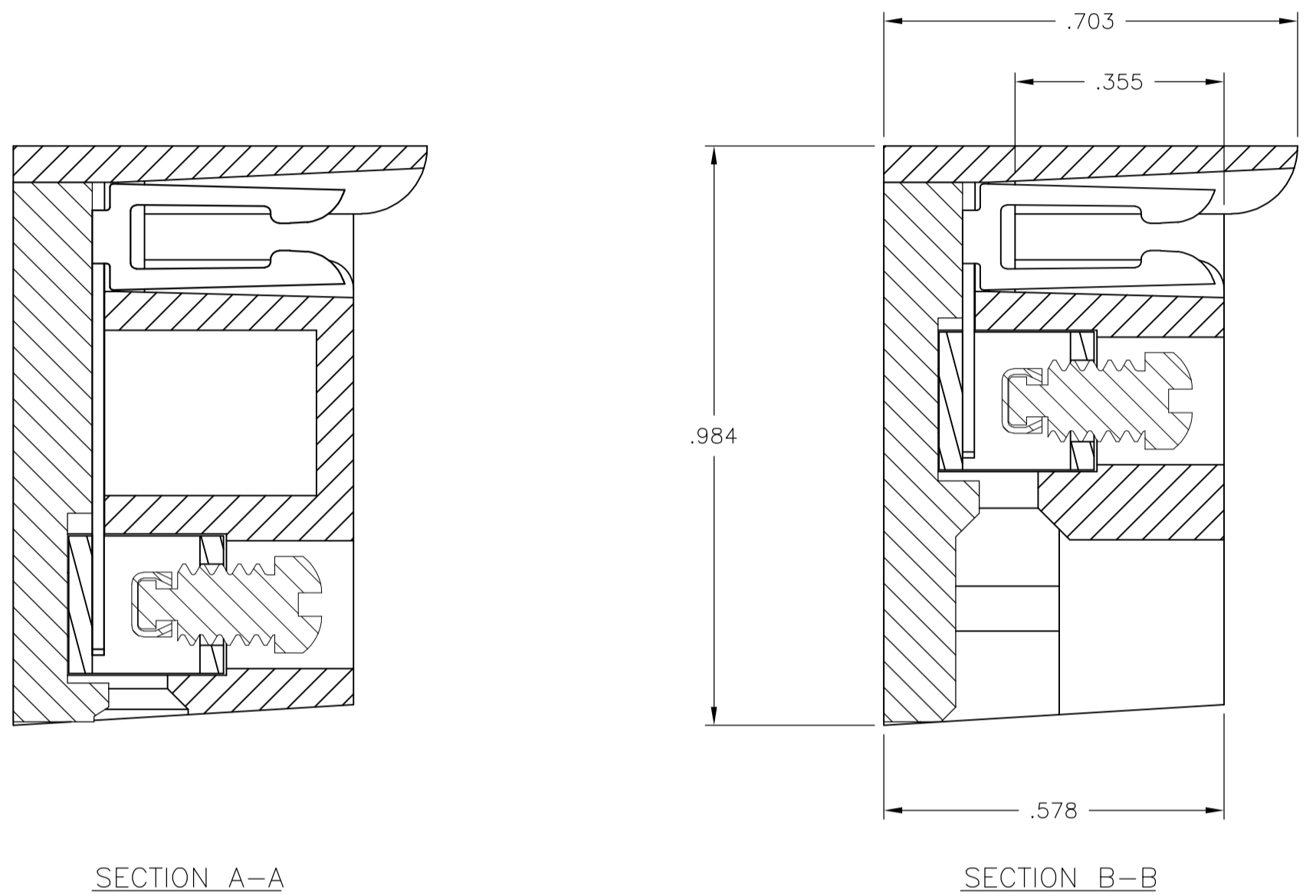
NOTES:

MATERIAL:
 HOUSING: POLYESTER, UL94V-0, WHITE.
 TUBULAR CONTACT: BRASS.
 PC CONTACT: PHOSPHOR BRONZE, BRIGHT TIN PLATE.
 SCREW: 6-32, STEEL, ZINC CHROMATE FINISH.
 CLAMP: BRASS

MECHANICAL:
 PITCH: .200"
 WIRE STRIP LENGTH: .25"
 RECOMMENDED TIGHTENING TORQUE: 5-8 IN-LBS.
 BOARD INSERTION FORCE: 5.6 OZ. PER CKT.
 BOARD SEPARATION FORCE: 1.8 OZ. PER CKT

ELECTRICAL:
 MAX CURRENT: 10A.
 OPERATING VOLTAGE: 250V.
 DIELECTRIC WITHSTAND: 2500V.
 WIRE RANGE: #12 STRANDED ONLY.
 INSULATION RESISTANCE:
 CONTACT RESISTANCE:

ENVIRONMENTAL:
 OPERATING TEMP.: -65°C TO +140°C.



OPTIONAL POLARIZING NOTCH
 LOCATION PER CUSTOMER REQUIREMENT
 USE OPTIONAL POLARIZING KEY CAT. NO. PC17

RECOMMENDED PCB LAYOUT

OBSOLETE	7.095	7.110	7.470	7.720	36	PCB1A36S	1-1437410-7
OBSOLETE	5.895	5.910	6.270	6.520	30	PCB1A30S	1-1437410-5
OBSOLETE	4.695	4.710	5.070	5.320	24	PCB1A24S	1-1437410-3
OBSOLETE	3.495	3.510	3.870	4.120	18	PCB1A18S	1-1437410-1
	2.295	2.310	2.670	2.920	12	PCB1A12S	1437410-9
	DIM E	DIM C	DIM B	DIM A	NO. OF POS.	CATALOG NUMBER	PART NUMBER

THIS DRAWING IS A CONTROLLED DOCUMENT.

DIMENSIONS: INCHES

TOLERANCES UNLESS OTHERWISE SPECIFIED:

0 PL	± .005
1 PL	± .005
2 PL	± .005
3 PL	± .005
4 PL	± .005
ANGLES	± .1°

MATERIAL: - FINISH: -

WEIGHT: -

CUSTOMER DRAWING

DIN S SCHLEGEL 6/17/04
 CHK S YODER 6/17/04
 APVD S YODER 6/17/04

NAME: PCB1A ASSEMBLY TIN PLATE

APPLICATION SPEC: -

SIZE: A1

CAGE CODE: 00779

DRAWING NO: 1437410-9

RESTRICTED TO: -

SCALE: 4:1

SHEET: 1 OF 1

REV: R