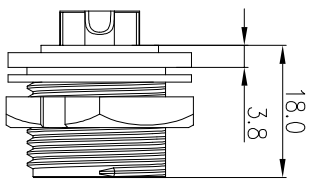
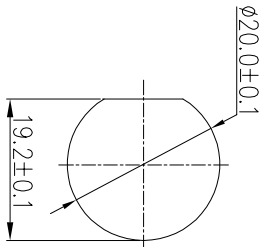
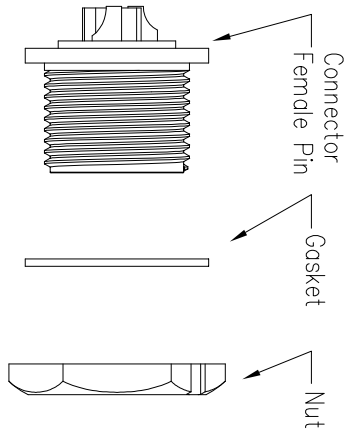
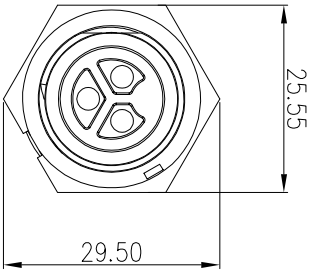
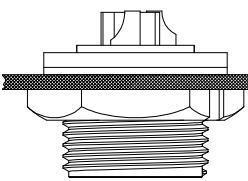


REV.	EN. NO.	DESCRIPTION	SIGN	DATE
C1	N/A	INITIAL DRAWING	Liu	2019/08/13



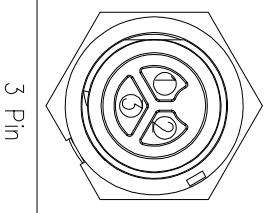
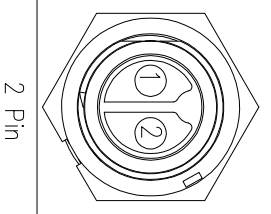
Panel T: Max 3.5



Specification:

1. Operation Temperature: -45°C~105°C.
2. Insulation Resistance: 100MΩ at DC500V.
3. Contact Resistance: <10mΩ
4. Withstand Voltage: 2000V AC
5. Operating Current: 20A
6. Operating Voltage: AC 300V
7. Waterproof Rate: IP67 (Mated)
8. Housing: Nylon, Black
9. Female Pin: Copper Alloy, Gold Plated
10. Gasket: Silicon Gray
11. Panel Nut: Nylon, Black
12. Torque Rate: 0.8~1.0N•m
13. RoHS Compliant.
14. UL Compliant.
15. Mating Cap P/N: 806-00021-00

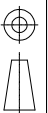
23XXX615-01
Pin Number



P/N: 23002615-01

P/N: 23003615-01

Pin Assignments Front View



DESCRIPTION

Middle Series Screw Front Mount With Female Pin

TOLERANCE

.X	±0.25
.XX	±0.15
.XXX	±0.05
ANGLES	±1°

SCALE	1:1	SHEET	1	OF	1
REV	C1	SIZE	A4	* : Inspection Item	

CHOGORI

PART NO	23XXX615-01	DRAWN BY	Liu	DATE	2019/08/13
DWG NO		CHECKED BY	Mo	DATE	2019/08/13
CUSTOMER		APPROVED BY	Pinson	DATE	2019/08/13