

6

5

4

3

2

1

E

E

D

D

C

C

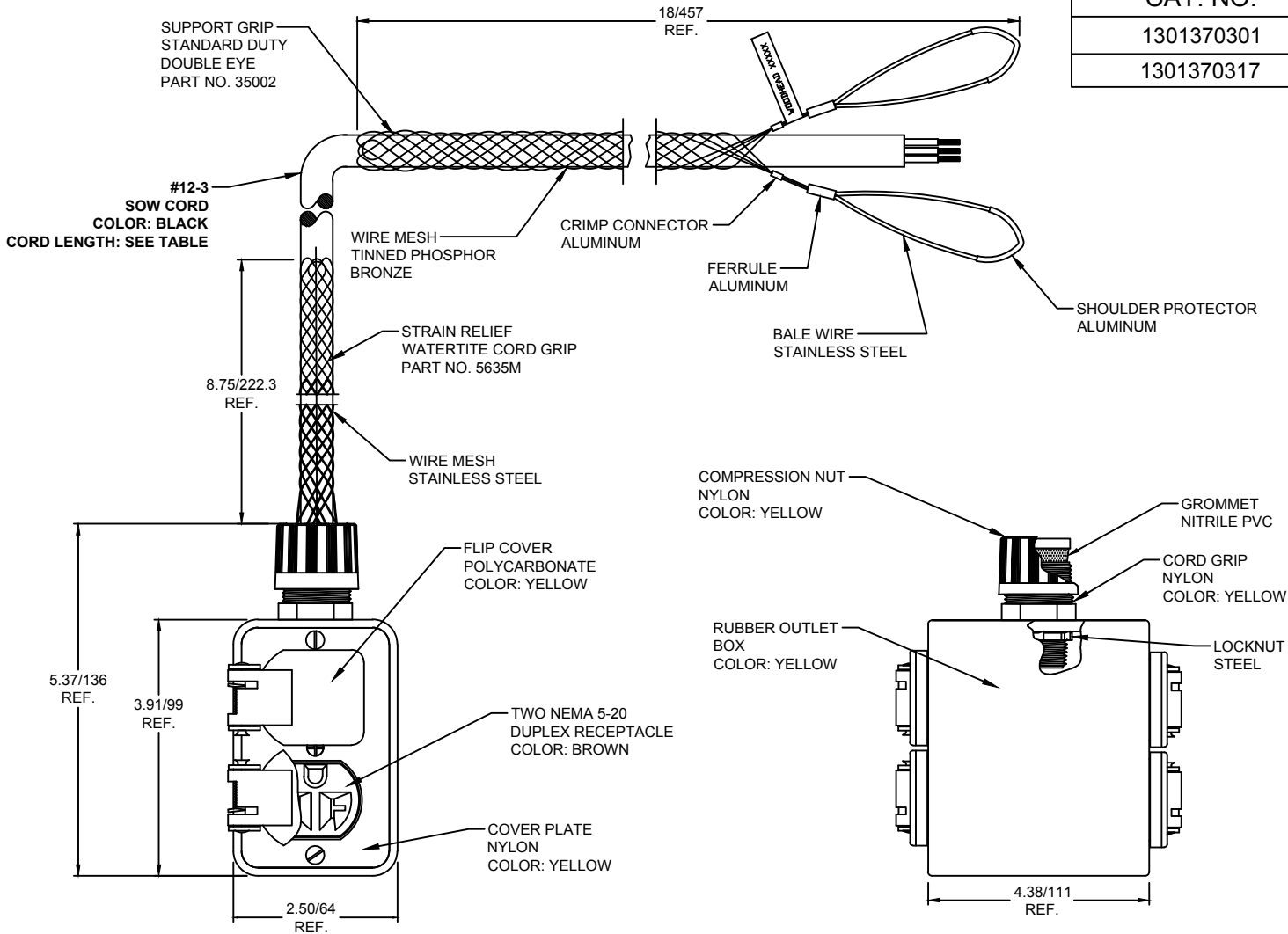
B

B

A

A

| CAT. NO.   | CORD LENGTH |
|------------|-------------|
| 1301370301 | 2.5 FEET    |
| 1301370317 | 12 FEET     |



|   |  |   |                                       |                     |                         |                    |                         |                   |                        |  |  |
|---|--|---|---------------------------------------|---------------------|-------------------------|--------------------|-------------------------|-------------------|------------------------|--|--|
| ADD 1301370317<br>EC NO: IPC2016-1544<br>DRWN: KCOX01<br>CHKD: HRUIZ01<br>APPR: JFMURPHY 2013/11/23 | 5/17/16<br>5/17/16                                   | QUALITY SYMBOLS<br>$\nabla=0$<br>$\nabla/C=0$   | GENERAL TOLERANCES (UNLESS SPECIFIED) |                     | DIMENSION STYLE INCH/MM |                    | SCALE NTS               | DESIGN UNITS INCH | THIRD ANGLE PROJECTION |  |  |
|   |  |   |                                       | mm                  | INCH                    | DRAWN BY DATE      | TITLE                   |                   |                        |  |  |
|   |  |   | 4 PLACES                              | ±---                | ±---                    | HRUIZ01 2013/10/10 | MULTIPLE OUTLET BOX     |                   |                        |  |  |
|   |  |   | 3 PLACES                              | ±---                | ±.005                   | CHECKED BY DATE    | W/ #12-3 BLACK SOW CORD |                   |                        |  |  |
|   | 2 PLACES   | ±.13  | ±.010                                 | HKNEELAN 2013/10/10 | 35002 & 5635M GRIPS     |                    |                         |                   |                        |  |  |
|   | 1 PLACE  | ±.25  | ±.020                                 | APPROVED BY DATE    | MOLEX INCORPORATED      |                    |                         |                   |                        |  |  |
|   | ANGULAR ±1/2°  |   | JFMURPHY 2013/11/23                   |                     | MATERIAL NO.            |                    | DOCUMENT NO.            |                   | SHEET NO.              |  |  |
|   | DRAFT WHERE APPLICABLE MUST REMAIN WITHIN DIMENSIONS |   | SEE TABLE                             |                     | SD-130137-038           |                    | 1 OF 1                  |                   |                        |  |  |
| B   | REV  | THIS DRAWING CONTAINS INFORMATION THAT IS PROPRIETARY TO MOLEX INCORPORATED AND SHOULD NOT BE USED WITHOUT WRITTEN PERMISSION |                                       |                     |                         |                    |                         |                   |                        |  |  |

6

5

4

3

2

1