

| PART NUMBER | ENGINEERING NUMBER | FINISH LENGTH |
|-------------|--------------------|---------------|
| 1300660183 | CR4100A30M003 | 0.98' [0.3M] |
| 1300660260 | CR4100A30M005 | 1.64' [0.5M] |
| 1300660184 | CR4100A30M010 | 3.28' [1.0M] |

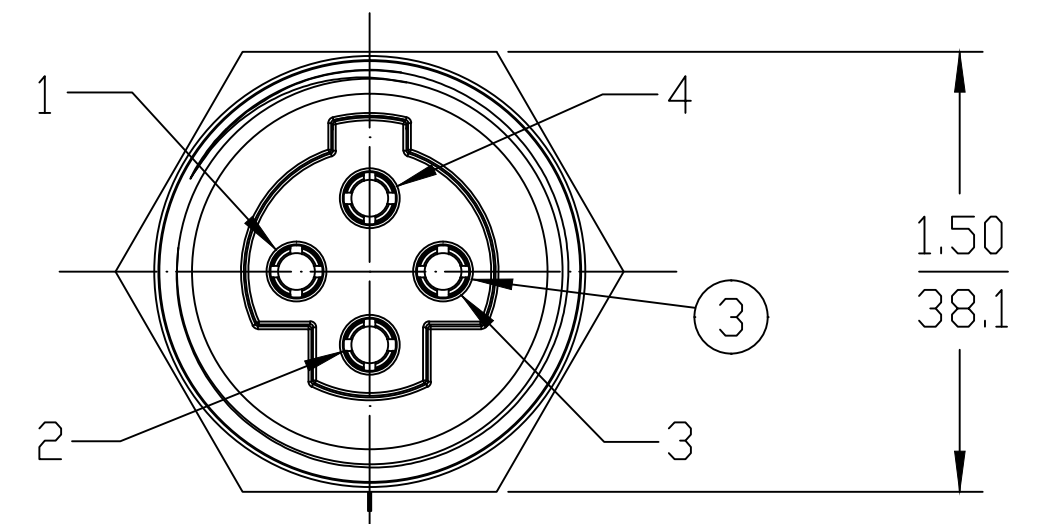
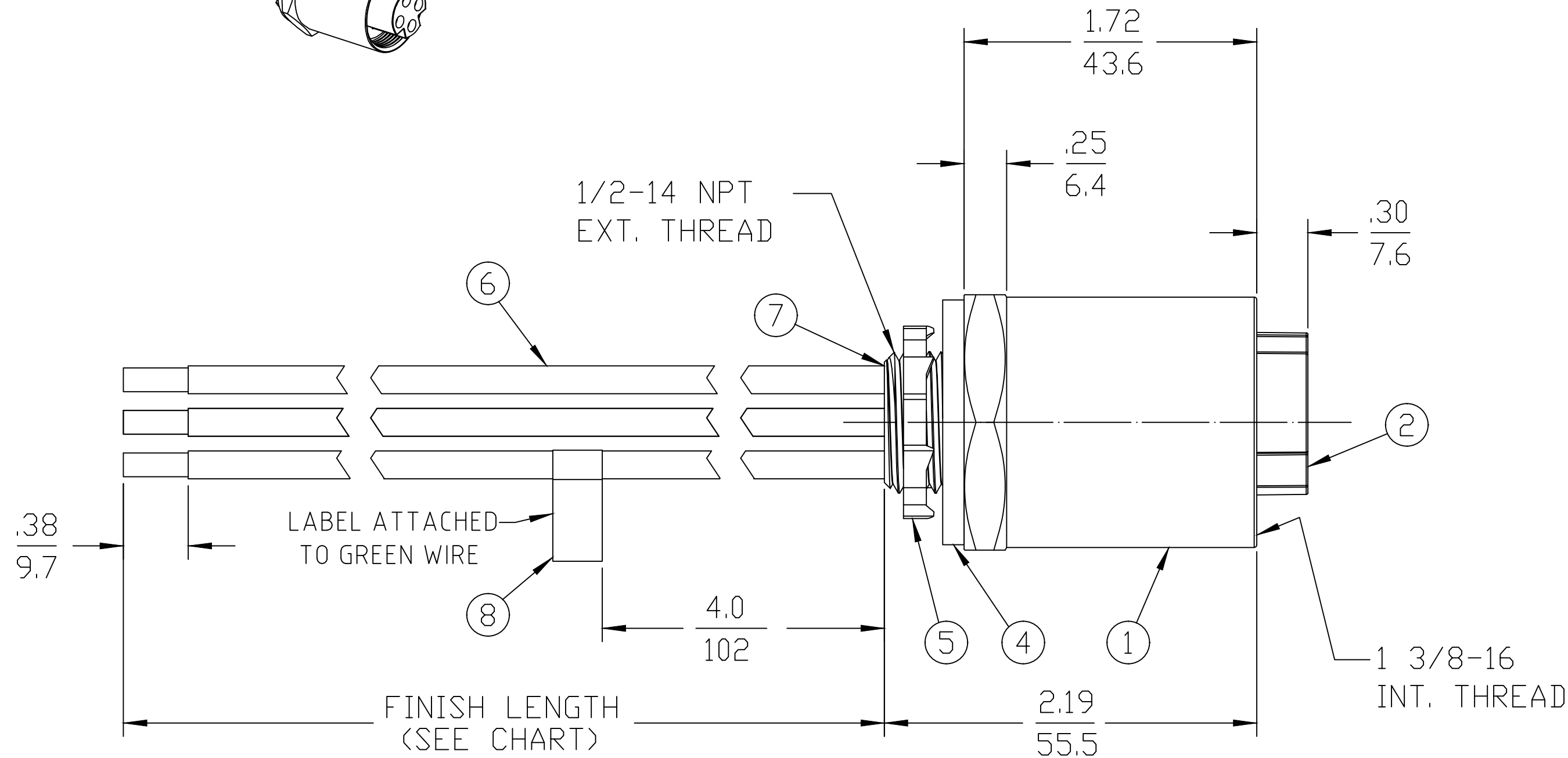
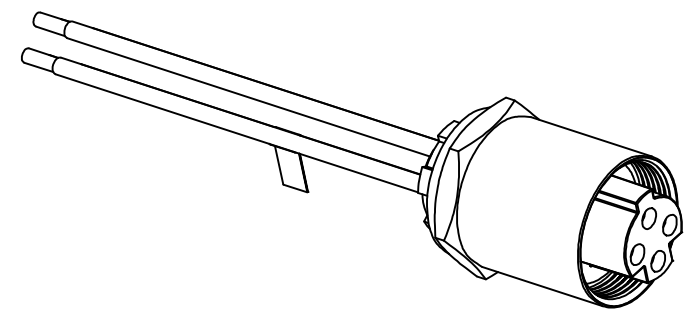
PART NUMBER LEGEND

CR4100A30M003

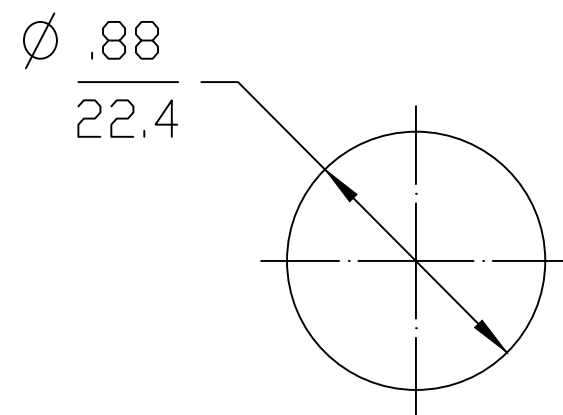
LENGTH
M005 = 0.5 METER
M010 = 1 METER
M100 = 10 METER

CABLE LENGTH TOLERANCES

| | |
|--------------------------|-------------------------|
| >.3M [1FT]: | +19mm-0 [+0.75in-0] |
| .3 - .9M [1 - 3FT]: | +44.5mm-0 [+1.75in-0] |
| .9 - 1.8M [3 - 6FT]: | +55.6mm-0 [+2.19in-0] |
| 1.8 - 3.7M [6 - 12FT]: | +88.9mm-0 [+3.50in-0] |
| 3.7 - 7.3M [12 - 24FT]: | +165.1mm-0 [+6.50in-0] |
| 7.3-14.6M [24 - 48FT]: | +317.5mm-0 [+12.50in-0] |
| 14.6 - 30.5M [48-100FT]: | +622.3mm-0 [+24.50in-0] |
| OVER 30M [100FT] | +2% OF FINISHED LENGTH |



- NOTES:**
- MATERIAL: AS NOTED
 - FINISH: AS NOTED
 - ELECTRICAL:
VOLTAGE: 4P: 500V PER IEC60664
600V PER UL2237
CURRENT: 32A
 - TEMP RATING: -20°TO +90°C
 - PROTECTION: IP67 (WHEN MATED)
 - UL LISTED FILE: E258922
 - ALL DIMS ARE FOR REFERENCE UNLESS NOTED OTHERWISE



TYPICAL KNOCKOUT

| | |
|-------|---|
| BLACK | 1 |
| GREEN | 2 |
| RED | 3 |
| WHITE | 4 |

WIRING DIAGRAM

| ITEM | QTY. | DESCRIPTION | MATERIAL | FINISH |
|------|------|-----------------------|--------------|--------------------|
| 8 | 1 | FLAG LABEL | VINYL | YELLOW |
| 7 | A/R | POTTING | EPOXY | BLACK |
| 6 | 4 | WIRE, 10 AWG UL 1015 | PVC JACKET | SEE WIRING DIAGRAM |
| 5 | 1 | LOCKNUT | STEEL | ZINC PLATED |
| 4 | 1 | GASKET | NEOPRENE | BLACK |
| 3 | 4 | SOCKET CONTACT | COPPER ALLOY | GOLD PLATED |
| 2 | 1 | FEMALE INSERT, 4 POLE | PVC | BLACK |
| 1 | 1 | RECEPTACLE SHELL | ALUMINUM | BLACK ANODIZED |

| | |
|---------------------------------------|---------------------------|
| UL 1015 WAS THHN | QUALITY SYMBOL |
| EC NO: IPG2019-0166 | |
| DRWN: JCAPPOZZ 2018/10/22 | |
| CHKD: --- APPR: BWOODMAN2018/11/16 | |
| B | DESCRIPTION |

| | GENERAL TOLERANCES (UNLESS SPECIFIED) | |
|--|---------------------------------------|-------|
| | mm | INCH |
| 4 PLACES | ±--- | ±--- |
| 3 PLACES | ±--- | ±--- |
| 2 PLACES | ±0.05 | ±--- |
| 1 PLACE | ±0.10 | ±INCH |
| ANGULAR ±.5° | | |
| DRAFT WHERE APPLICABLE MUST REMAIN WITHIN DIMENSIONS | | |

| DIMENSION STYLE | |
|-----------------|------------|
| RSTONE | |
| DRAWN BY | DATE |
| JCAPPOZZ | 2018/10/22 |
| CHECKED BY | DATE |
| ---- | ---- |
| APPROVED BY | DATE |
| BWOODMAN | 2018/11/16 |
| MATERIAL NO. | |
| SEE P/N CHART | |
| SIZE | C |

| SCALE | DESIGN UNITS | THIRD ANGLE PROJECTION |
|---|---------------|------------------------|
| 4:1 | METRIC | |
| TITLE | | |
| BRAD POWER FEMALE, 1/2" NPT, 4 POLE RECEPTACLE ASSEMBLY | | |
| MOLEX INCORPORATED | | |
| MATERIAL NO. | DOCUMENT NO. | SHEET NO. |
| SEE P/N CHART | SD-130066-063 | 1 OF 1 |
| THIS DRAWING CONTAINS INFORMATION THAT IS PROPRIETARY TO MOLEX INCORPORATED AND SHOULD NOT BE USED WITHOUT WRITTEN PERMISSION | | |

REF. THIS DRAWING SUPERSEDES COCREATE REV. A