

THIS IS A C.A.D. GENERATED DRAWING  
DO NOT MAKE MANUAL REVISIONS TO MASTER.



ISSUE NUMBER

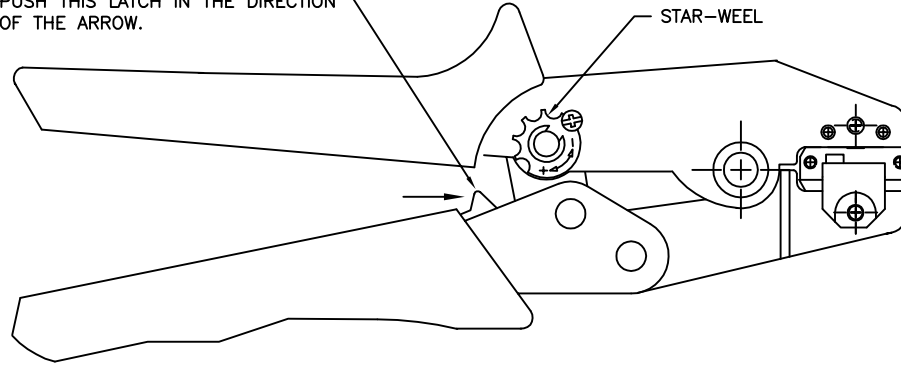
ORIGINAL ①

UPDATE WIRE AWG

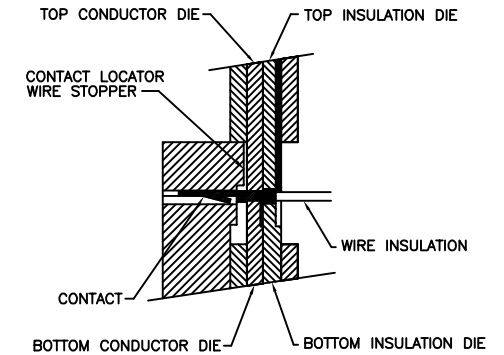
UPDATE PN TABLE

J.L. NOV.22/2022 ②

TO OPEN PARTIALLY CLOSED TOOL  
PUSH THIS LATCH IN THE DIRECTION  
OF THE ARROW.



STAR-WHEEL



TOP CONDUCTOR DIE

TOP INSULATION DIE

CONTACT LOCATOR  
WIRE STOPPER

WIRE INSULATION

CONTACT

BOTTOM CONDUCTOR DIE

BOTTOM INSULATION DIE

SECTION THROUGH DIE NEST  
WITH CONTACT IN POSITION

NOTES:

WIRE AWG	CRIMP STRENGTH
24 AWG	5 LBS
26 AWG	3 LBS
28 AWG	2 LBS
30 AWG	1.7 LBS

1- THIS HAND TOOL IS DESIGNED FOR CRIMPING 24 TO 30 AWG WIRES TO EDAC CONTACT P/N 140-941-290.

2- RISK OF ELECTRIC SHOCK- DO NOT USE THIS ON LIVE WIRE.

3- CRIMPING INSTRUCTIONS:

- OPEN THE TOOL, PLACE THE CONTACT INTO THE CORRECT DIE NEST.
- PARTIALLY CLOSE THE TOOL UNTIL THE CONTACT IS HELD IN PLACE. INSERT THE WIRE INTO THE CONTACT.
- CLOSE THE TOOL UNTIL THE RATCHET RELEASES. REMOVE THE CRIMPED CONTACT.

4- ADJUSTMENT OF CRIMP FORCE (WHEN NECESSARY):

- LOOSEN THE SCREW
- ADJUST THE STAR-WHEEL BY TURNING FROM (-) TO(+).
- CHECK THE PRELOAD AND THE CRIMP FORCE.

TOOL PART NUMBER: 140-280-201

140 SERIES HAND CRIMP TOOL INSTRUCTIONS



YOUR CONNECTION TO QUALITY & SERVICE

EDAC INC  
TORONTO, ONTARIO  
CANADA

THESE DRAWINGS AND SPECIFICATIONS  
ARE THE PROPERTY OF EDAC INC.,AND  
SHALL NOT BE REPRODUCED,OR COPIED  
OR USED AS THE BASIS FOR THE  
MANUFACTURE OR SALE OF APPARATUS  
WITHOUT WRITTEN PERMISSION.

ACAD REFERENCE NO. 140-280-201

DRAWN: K.L.

DATE: OCT.22/2020

CHECKED:

DATE:

SCALE: N.T.S.

SHEET 1 OF 2

DRAWING NUMBER

140-280-201

ISSUE

2

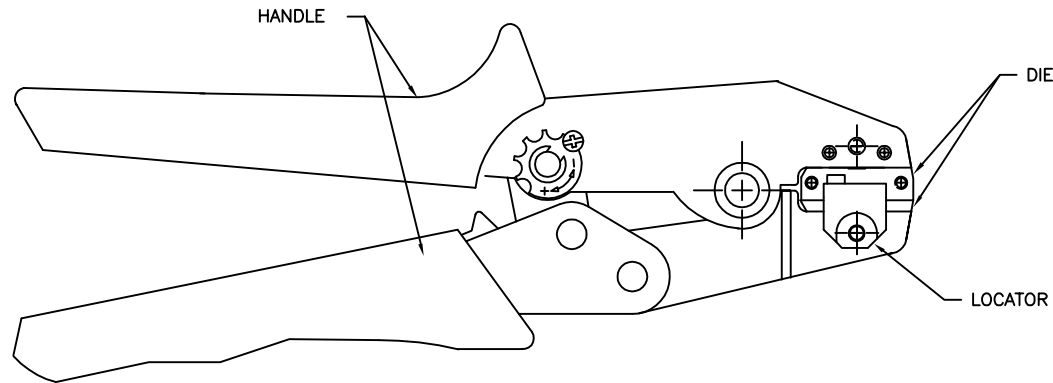
THIS IS A C.A.D. GENERATED DRAWING  
DO NOT MAKE MANUAL REVISIONS TO MASTER.



ISSUE NUMBER

ORIGINAL

①

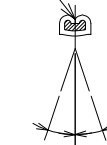


KEEP THE WIRE TO APPEAR

KEEP THE INSULATION TO APPEAR  
BE SURE NOT TO ENCR OACH ON THE WIRE BARREL

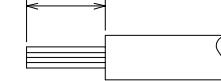
BELL MOUTH MUST EXIST

SEAM MUST BE CLOSED  
WIRE MUST NOT BE EXPOSED



ROLLING  $\pm 3^\circ$

1.5~2.0



WIRE STRIP LENGTH

CRIMP ASM*	LOCATOR KIT SET	HAND TOOL
140-280-201	140-282-001	140-281-201

\* Assembly includes: Handle, Die and Locator. Locator is available for purchase separately.

## 140 SERIES HAND CRIMP TOOL INSTRUCTIONS



YOUR CONNECTION TO QUALITY & SERVICE

EDAC INC  
TORONTO, ONTARIO  
CANADA

THESE DRAWINGS AND SPECIFICATIONS  
ARE THE PROPERTY OF EDAC INC., AND  
SHALL NOT BE REPRODUCED, OR COPIED  
OR USED AS THE BASIS FOR THE  
MANUFACTURE OR SALE OF APPARATUS  
WITHOUT WRITTEN PERMISSION.

ACAD REFERENCE NO. 140-280-201

DRAWN: K.L.

DATE: OCT.22/2020

CHECKED:

DATE:

SCALE: N.T.S.

SHEET 2 OF 2

DRAWING NUMBER

140-280-201

ISSUE

2