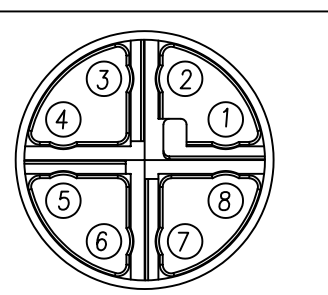


NUT



PIN ASSIGNMENTS  
FRONT VIEW

NOTE:

MATERIAL	
HOUSING:	PBT UL94V-0, BLACK
CONTACT:	BRASS
SHELL:	ZINC ALLOY
NUT:	BRASS
BACK SHELL:	BRASS
FINISH	
CONTACT:	GOLD 10 $\mu$ " MIN. OVER 50 $\mu$ " NICKEL
SHELL:	NICKEL PLATED
NUT:	NICKEL PLATED
BACK SHELL:	NICKEL PLATED
ELECTRICAL	
RATED CURRENT:	0.5A
RATED VOLTAGE:	50VAC/60VDC
INSULATION RESISTANCE:	100 MOhms MIN.
CONTACT RESISTANCE:	10 mOhms MAX.
WATER PROOF:	IP67
ENVIRONMENT	
OPERATION TEMPERATURE:	-40°C TO +85°C
MAX WIRE AWG:	24

858-X08-103RLS4

\*SEE PAGE 2  
 0 =  $\phi 7.5$ mm BACK SHELL  
 L =  $\phi 9.0$ mm BACK SHELL  
 N = NO BACK SHELL INCLUDED

3 = BRASS/NICKEL (B/N) BACK SHELL & NUT  
 T = B/N BACK SHELL / STAINLESS STEEL NUT

1 = GOLD FLASH  
 4 = 10 $\mu$ " GOLD

RoHS COMPLIANT

UNITS = inch [mm]

DO NOT SCALE FROM DRAWING



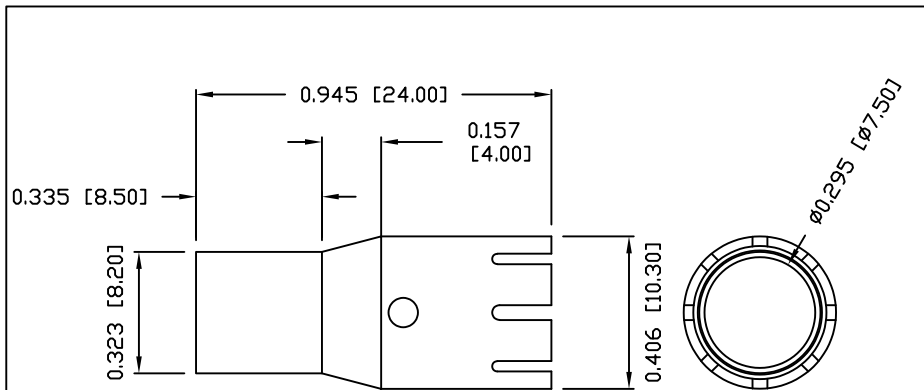
THESE DRAWINGS AND SPECIFICATIONS ARE THE PROPERTY OF NorComp AND SHALL NOT BE REPRODUCED, COPIED OR USED AS THE BASIS FOR THE MANUFACTURE OR SALE OF APPARATUS WITHOUT WRITTEN PERMISSION.

DRAWN:  
M. SIGMON  
DATE:  
08/12/2016

NorComp

SCALE: NTS	SHEET 1	OF 2	REV 8
DWG NO. 858-X08-103RLS4			

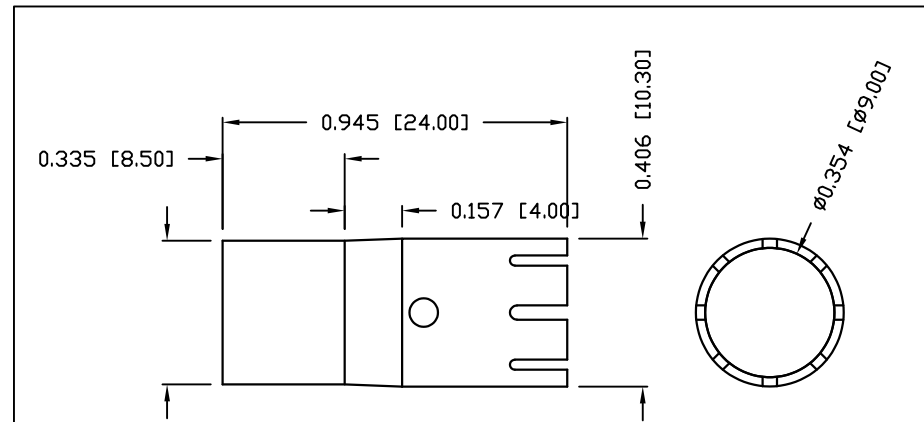
BACK SHELL  
OPTION "O"



RECOMMENDED  
CRIMPING INSTRUCTIONS  
OPTION "O"

1. BUILD UP WIRE OD TO min  $\phi 7.0\text{mm}$  W/ HEATSHRINK
2. USE 0.305" HEX CRIMP TOOL  
\*MAY NOT BE SUITABLE FOR ALL APPLICATIONS

BACK SHELL  
OPTION "L"



RECOMMENDED  
CRIMPING INSTRUCTIONS  
OPTION "L"

1. BUILD UP WIRE OD TO  $\phi 8.3\text{mm}$ – $\phi 8.5\text{mm}$  W/ HEATSHRINK
2. USE 0.350" HEX CRIMP TOOL  
\*MAY NOT BE SUITABLE FOR ALL APPLICATIONS

RoHS COMPLIANT



THESE DRAWINGS AND SPECIFICATIONS ARE THE PROPERTY OF NorComp AND SHALL NOT BE REPRODUCED, COPIED OR USED AS THE BASIS FOR THE MANUFACTURE OR SALE OF APPARATUS WITHOUT WRITTEN PERMISSION.

DRAWN:  
M. SIGMON

DATE:  
08/12/2016

UNITS = inch [mm]

DO NOT SCALE FROM DRAWING

NorComp

SCALE:  
NTS

SHEET OF  
2 2

REV  
8

DWG NO.

858-X08-103RLS4