

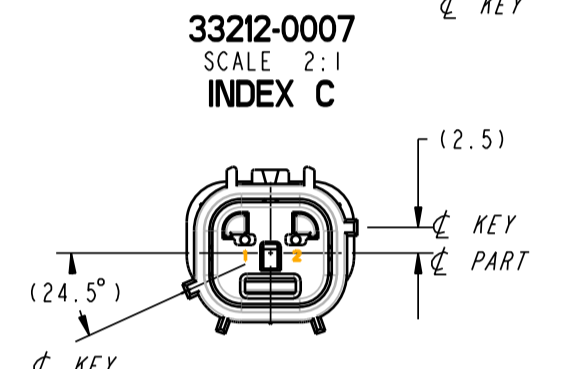
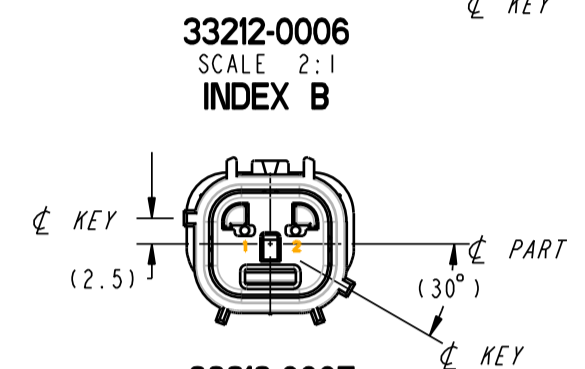
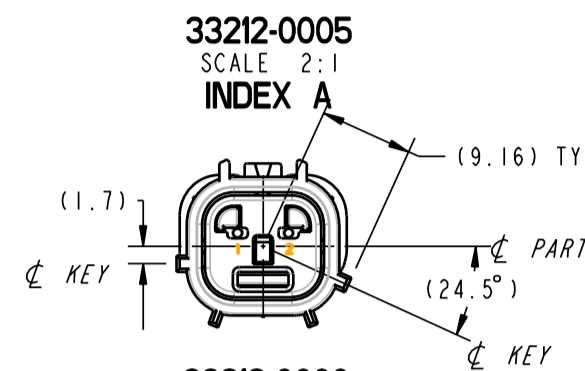
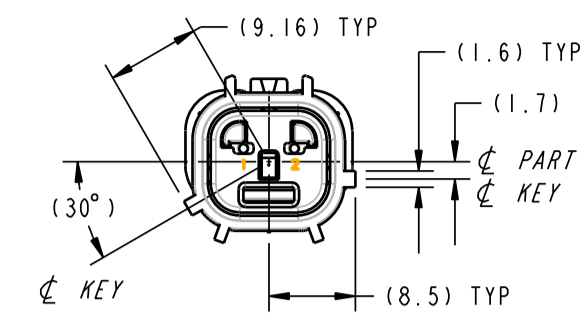
| MOLEX ASSY • 33212-0005 INDEX A (REF DC • 4793106) |     |            |                       |   |
|--|-----|------------|-----------------------|---|
| ITEM   | QTY | MOLEX P/N  | DESCRIPTION           | MATERIAL  |
| 1  | 1   | 33212-0001 | HSG CONN-BLADE        | 15% G.F. NYLON  |
| 2  | 1   | 33209-0001 | GROMMET CAP           | 15% G.F. NYLON  |
| 3  | 1   | 33019-0023 | GROMMET               | SILICONE RUBBER, 30 DURO, BURNT ORANGE (PURCHASED ITEM) |
| 4  | 1   | 33213-0001 | INSERT - BLADE INSERT | 15% G.F. NYLON  |

| MOLEX ASSY • 33212-0006 INDEX B (REF DC ASSY • 479451AA) |     |            |                       |   |
|--|-----|------------|-----------------------|---|
| ITEM   | QTY | MOLEX P/N  | DESCRIPTION           | MATERIAL  |
| 1  | 1   | 33212-0002 | HSG CONN-BLADE        | 15% G.F. NYLON  |
| 2  | 1   | 33209-0001 | GROMMET CAP           | 15% G.F. NYLON  |
| 3  | 1   | 33019-0023 | GROMMET               | SILICONE RUBBER, 30 DURO, BURNT ORANGE (PURCHASED ITEM) |
| 4  | 1   | 33213-0001 | INSERT - BLADE INSERT | 15% G.F. NYLON  |

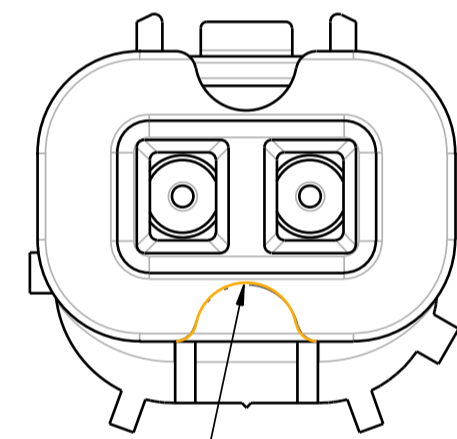
| MOLEX ASSY • 33212-0007 INDEX C (REF DC ASSY • 479452AA) |     |            |                       |   |
|--|-----|------------|-----------------------|---|
| ITEM   | QTY | MOLEX P/N  | DESCRIPTION           | MATERIAL  |
| 1  | 1   | 33212-0003 | HSG CONN-BLADE        | 15% G.F. NYLON  |
| 2  | 1   | 33209-0001 | GROMMET CAP           | 15% G.F. NYLON  |
| 3  | 1   | 33019-0023 | GROMMET               | SILICONE RUBBER, 30 DURO, BURNT ORANGE (PURCHASED ITEM) |
| 4  | 1   | 33213-0001 | INSERT - BLADE INSERT | 15% G.F. NYLON  |

| MOLEX ASSY • 33212-0008 INDEX D (REF DC ASSY • 479453AA) |     |            |                       |   |
|--|-----|------------|-----------------------|---|
| ITEM   | QTY | MOLEX P/N  | DESCRIPTION           | MATERIAL  |
| 1  | 1   | 33212-0004 | HSG CONN-BLADE        | 15% G.F. NYLON  |
| 2  | 1   | 33209-0001 | GROMMET CAP           | 15% G.F. NYLON  |
| 3  | 1   | 33019-0023 | GROMMET               | SILICONE RUBBER, 30 DURO, BURNT ORANGE (PURCHASED ITEM) |
| 4  | 1   | 33213-0001 | INSERT - BLADE INSERT | 15% G.F. NYLON  |

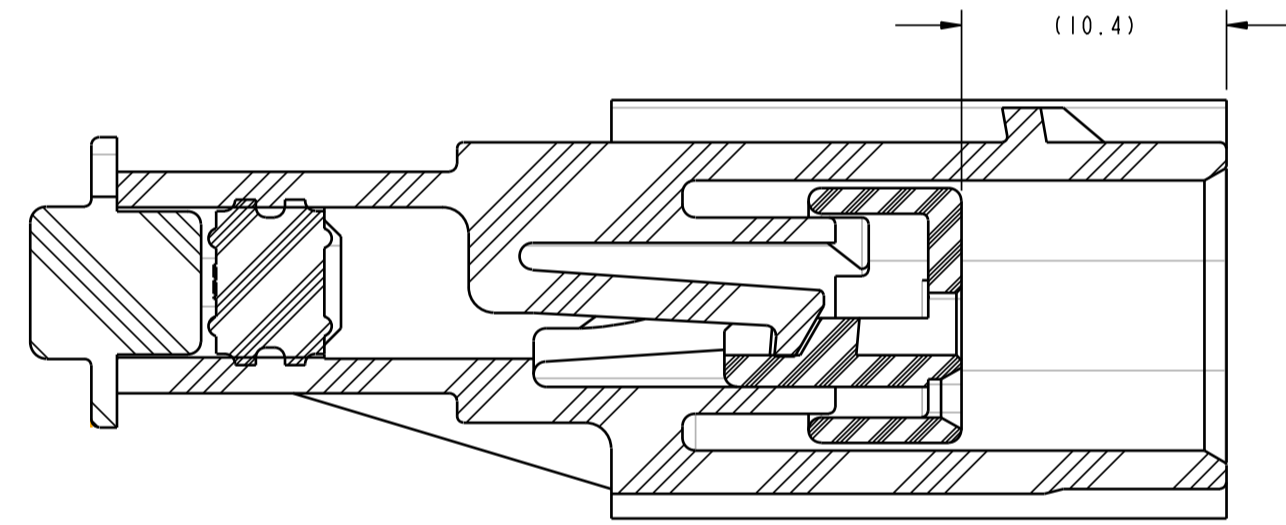
**KEY OPTIONS**  
FRONT VIEWS



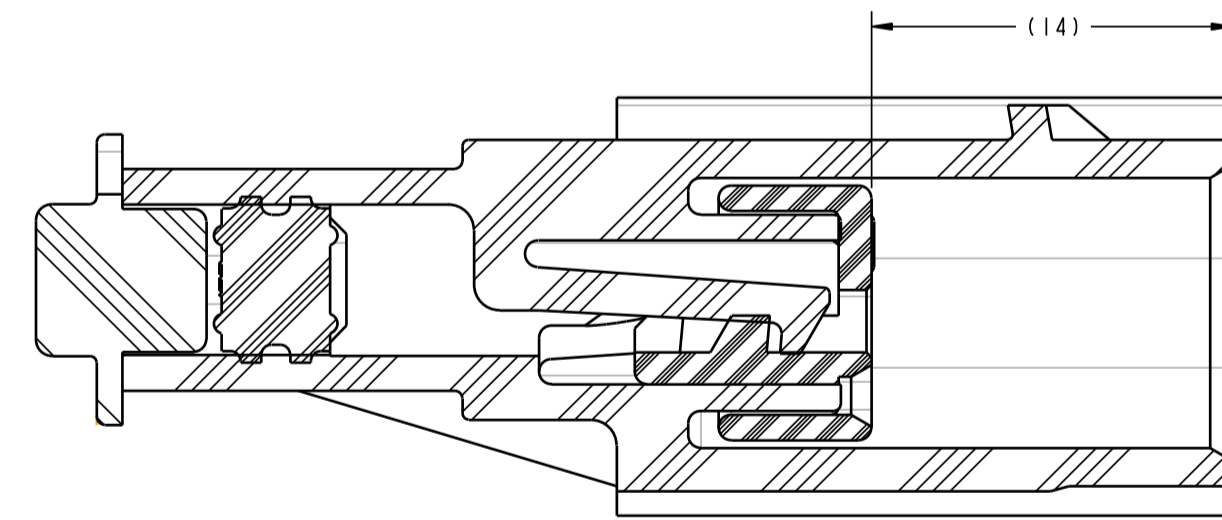
33212-0008  
SCALE 2:1  
INDEX D



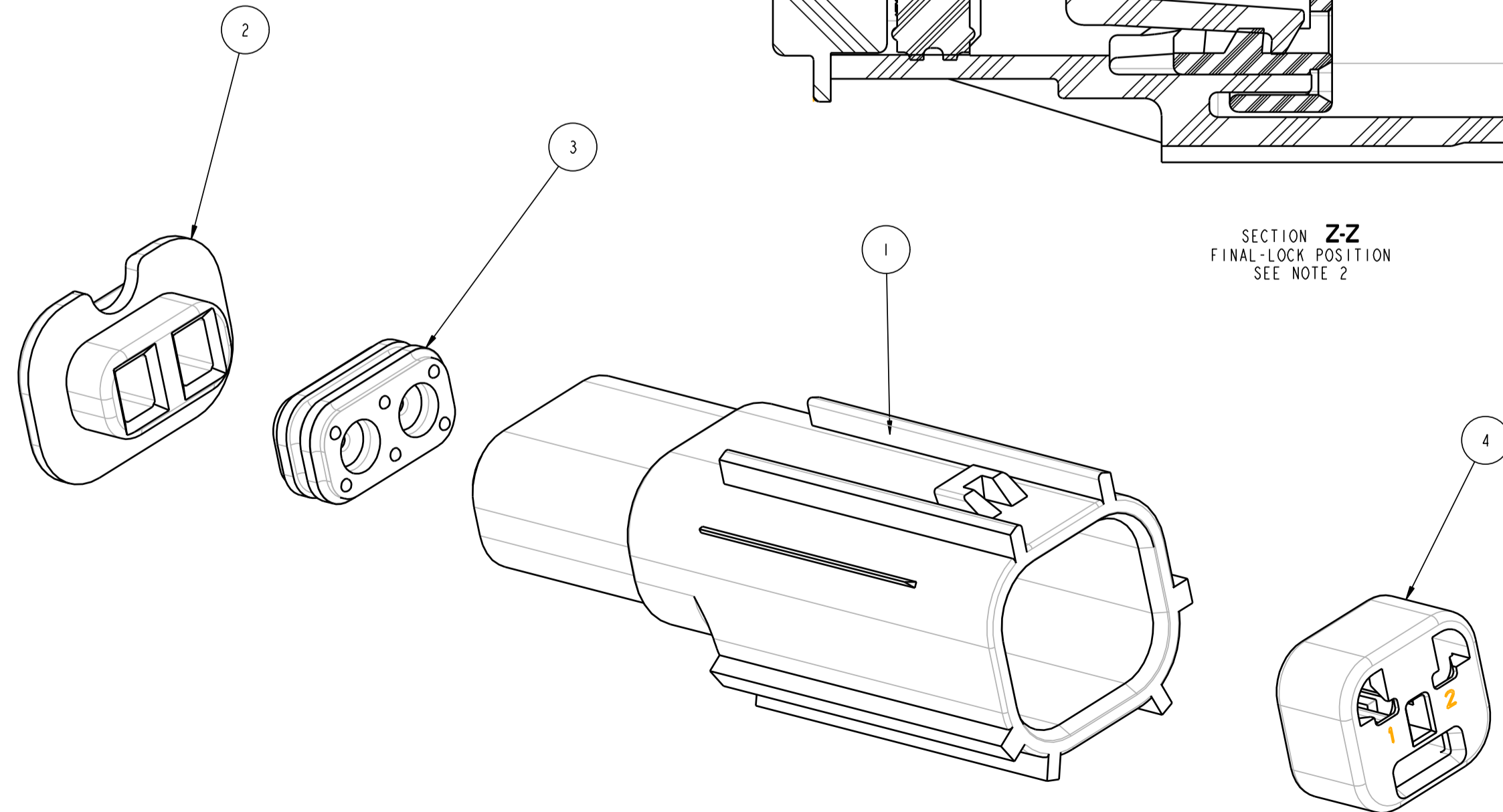
OPTIONAL CONSTRUCTION FOR GROMMET CAP ORIENTATION



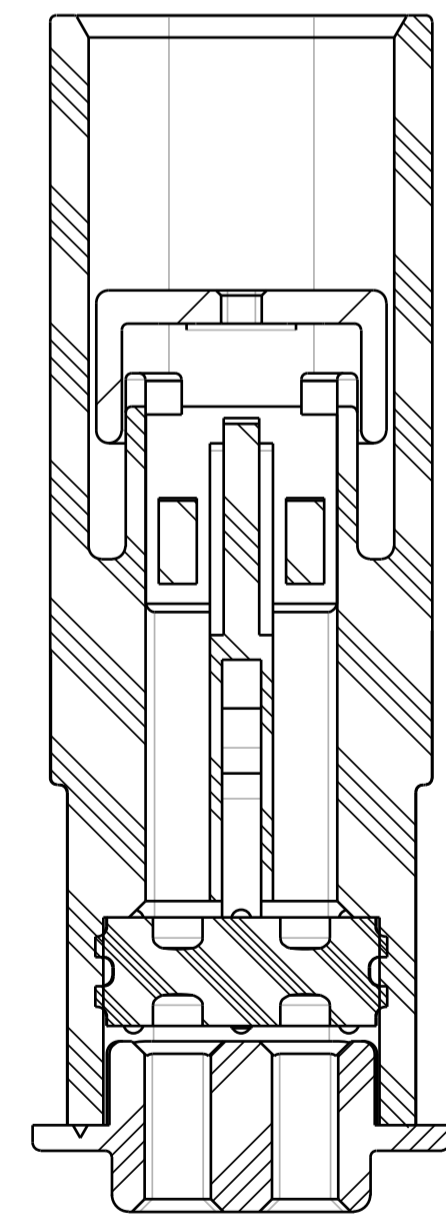
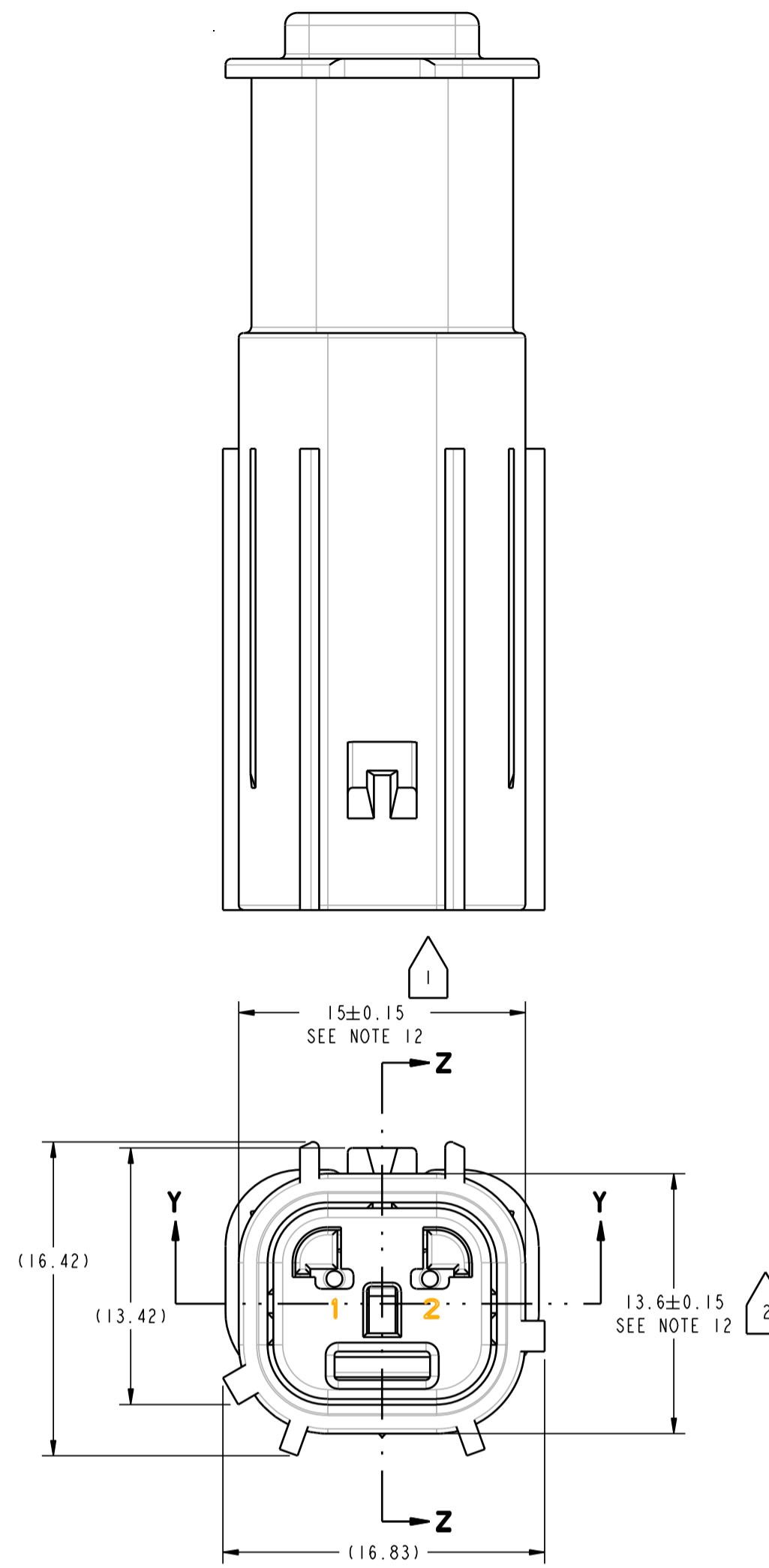
SECTION Z-Z  
PRE-LOCK POSITION  
SEE NOTE 2



SECTION Z-Z  
FINAL-LOCK POSITION  
SEE NOTE 2



EXPLODED VIEW  
2-WAY CONNECTOR BLADE ASSEMBLY  
(MOLEX PART NUMBER: 33212-0005)



SECTION Y-Y



- NOTES:**
- DESIGNED TO MATE WITH RECEPTACLE ASSEMBLY MOLEX CHART SD-33214-002 (REF DC CHART # 4793837)
  - ASSY SHIPPED WITH INSERT IN PRE-LOCK POSITION (SEE SECTION Z-Z PRE-LOCK). UPON FULL TERMINAL ASSY, THE INSERT MUST BE SNAPPED INTO ITS FINAL-LOCK POSITION (SEE SECTION Z-Z FINAL-LOCK)
  - BLADE TERMINAL (MOLEX DWG SD-33121-001) TO BE USED WITH THIS ASSY.
  - THE MAXIMUM INSERT ON FORCE FOR A 16 TO 20 AWG TERMINAL IS 30 N (EXCEPTION OF PF-9600 REV A, A SECTION 5.3.1.2)
  - FORCE TO PUSH INSERT INTO FINAL-LOCK POSITION: 10N MIN, 50 N MAX
  - MINIMUM FORCE TO TAKE INSERT FROM FINAL-LOCK TO PRE-LOCK 25.0 N
  - MINIMUM FORCE TO REMOVE INSERT FROM CONNECTOR ONCE IN PRE-LOCK: 15 N
  - GROMMET CAP TO BE SONICALLY WELDED TO CONNECTOR HOUSING. CAP TO MEET OR EXCEED 110 N OF PULL-OFF FORCE.
  - QUALITY ASSURANCE REQUIREMENTS PER PS-7300: 1 DIAMOND
  - CRITICAL VERIFICATION REQUIREMENTS PER PS-8335: 6 PENTAGONS
  - SYSTEM TO BE USED WITH MS-8288 AND MS-9502, CABLE SIZE 20, 18 AND 16 AWG FOR SEALING PURPOSE ONLY
  - HIGHLIGHTED DIMENSION TO BE MEASURED AT DATUM A
  - THIS DRAWING REPLACES DC 4793836

| REV   | DESCRIPTION | QUALITY SYMBOLS |      | GENERAL TOLERANCES (UNLESS SPECIFIED) |            | SCALE           | DESIGN UNITS | THIRD ANGLE PROJECTION   | REVISE ON CAD ONLY |           |  |  |
|---|-------------|-----------------|------|---------------------------------------|------------|-----------------|--------------|--------------------------|--------------------|-----------|--|--|
|   |             | mm              | INCH | mm                                    | INCH       | 5:1             | MM           |                          |                    |           |  |  |
| A   |             |                 |      | 4 PLACES ±                            | ±          | R.I. FRANK      | DATE         | TITLE                    |                    |           |  |  |
|   |             |                 |      | 3 PLACES ±                            | ±          | DRAWN BY        | DATE         | CONNECTOR ASSY           |                    |           |  |  |
|   |             |                 |      | 2 PLACES ±                            | ± AS SHOWN | M.E. GEETER SR. | 3-25-96      | 2-WAY 1.5MM BLADE SYSTEM |                    |           |  |  |
|   |             |                 |      | 1 PLACE ±                             | ± AS SHOWN | CHECKED BY      | DATE         | CHART                    |                    |           |  |  |
|   |             |                 |      | ANGULAR ±                             | ± AS SHOWN | R.H. BELL       | 3-25-96      | MOLEX INCORPORATED       |                    |           |  |  |
|   |             |                 |      |                                       |            | APPROVED BY     | DATE         | MATERIAL NO.             | DOCUMENT NO.       | SHEET NO. |  |  |
|   |             |                 |      |                                       |            | H. ZAVERZENGE   | 3-25-96      | SEE TABLE                | SD-33212-005       | 1 OF 1    |  |  |
| THIS DRAWING CONTAINS INFORMATION THAT IS PROPRIETARY TO MOLEX INCORPORATED AND SHOULD NOT BE USED WITHOUT WRITTEN PERMISSION |             |                 |      |                                       |            |                 |              |                          |                    |           |  |  |