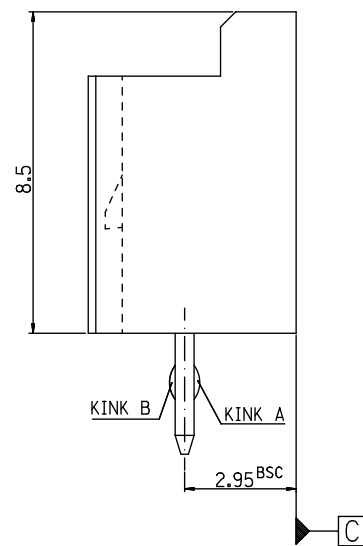
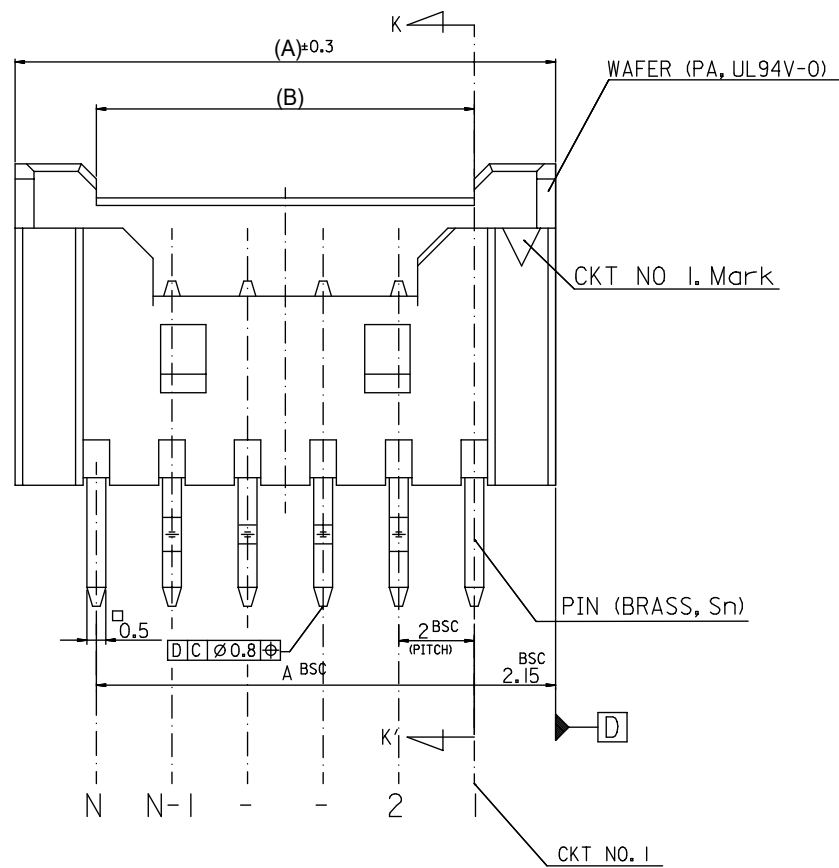
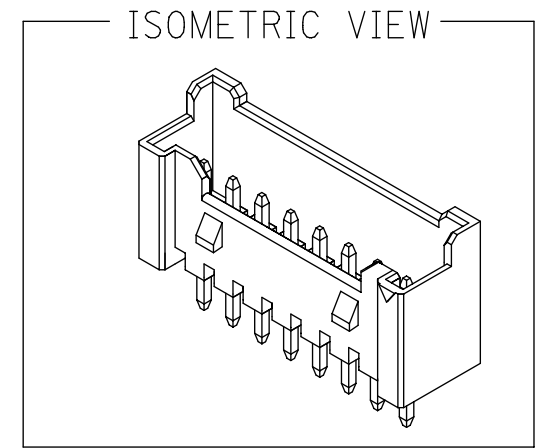
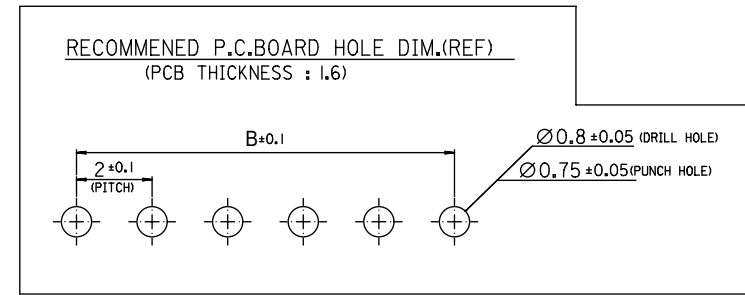


SECTION K-K'



**LEGEND**

SD-35362-\*\*\*\*  
 CKT NO. \_\_\_\_\_ COLOR \_\_\_\_\_

FINAL GOOD (BULK) — 5 : SELECTIVE KINK (LEAD FREE)  
 — 6 : NONE KINK (LEAD FREE)

SUB ASSY (TUBE) — 7 : SELECTIVE KINK (LEAD FREE)  
 — 8 : NONE KINK (LEAD FREE)

COLOR

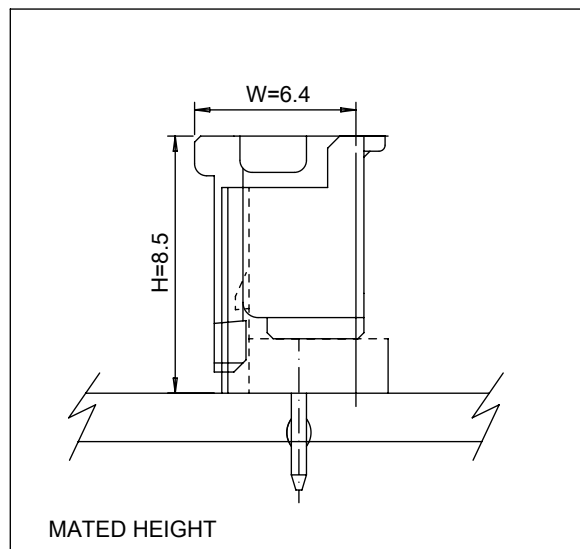
- 0 : NATURAL
- 1 : BLACK
- 2 : RED
- 3 : YELLOW
- 4 : BLUE
- 5 : GREEN
- 6 : TUBE PACKING (NaturalColor)
- 7 : TUBE PACKING (Red Color)
- 8 : TUBE PACKING (Blue Color)

**NOTES**

- MATERIAL : UNFILLED POLYAMIDE, UL94V-0  
PIN : BRASS
- FINISHES : PIN - Tin(Sn) 1.0~3.0m OVERALL  
Cu 1.5~3.75m OVERALL
- PRODUCT SPECIFICATION : PS-35507-003
- MATING HOUSING : 35507-\*\*0\*  
MATING TERMINAL : 50212-8000
- KINK

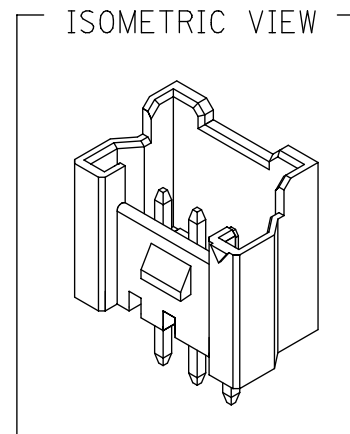
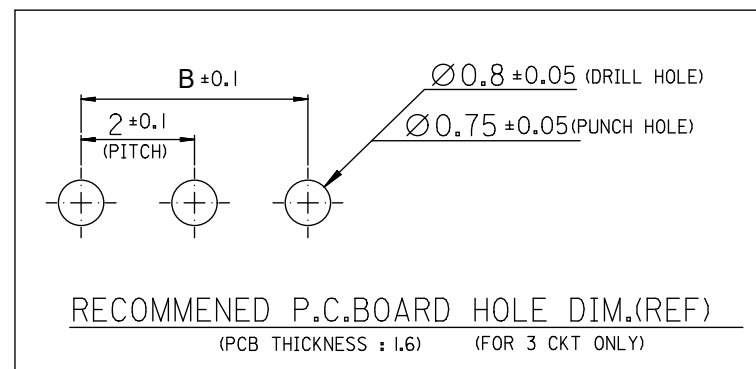
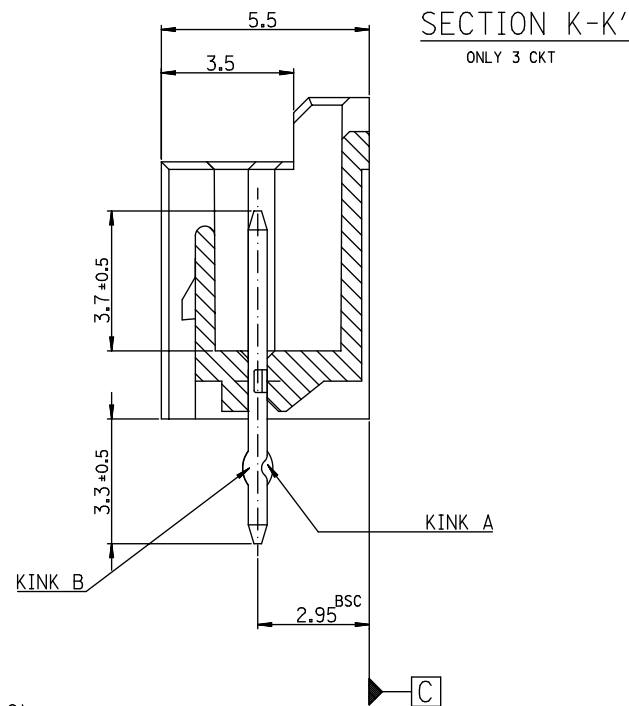
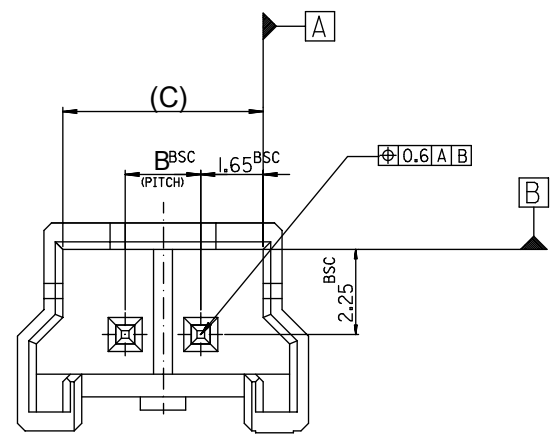
| CKT NO     | 1 | 2 | 3 | 4 | 5 | N-2 | N-1 | N |
|------------|---|---|---|---|---|-----|-----|---|
| 6 CKT OVER | — | A | B | — | — | B   | A   | — |
| 5 CKT      | A | B | — | B | A |     |     |   |
| 4 CKT      | A | B | B | A |   |     |     |   |

|      |    |      |           |            |     |
|------|----|------|-----------|------------|-----|
| 31.3 | 28 | 32.3 | 3536215** | 35362-15** | 15  |
| 29.3 | 26 | 30.3 | 3536214** | 35362-14** | 14  |
| 27.3 | 24 | 28.3 | 3536213** | 35362-13** | 13  |
| 25.3 | 22 | 26.3 | 3536212** | 35362-12** | 12  |
| 23.3 | 20 | 24.3 | 3536211** | 35362-11** | 11  |
| 21.3 | 18 | 22.3 | 3536210** | 35362-10** | 10  |
| 19.3 | 16 | 20.3 | 3536209** | 35362-09** | 9   |
| 17.3 | 14 | 18.3 | 3536208** | 35362-08** | 8   |
| 15.3 | 12 | 16.3 | 3536207** | 35362-07** | 7   |
| 13.3 | 10 | 14.3 | 3536206** | 35362-06** | 6   |
| 11.3 | 8  | 12.3 | 3536205** | 35362-05** | 5   |
| 9.3  | 6  | 10.3 | 3536204** | 35362-04** | 4   |
| (C)  | B  | (A)  | ENG. NO.  | ENG. NO.   | CKT |



|                   |       |  |   |       |   |  |                            |  |
|-------------------|-------|--|---|-------|---|--|----------------------------|--|
| <b>LEAD FREE</b>  |       | SYMBOLS<br>▽ = 0<br>▽ = 0<br>▽ = 0<br>▽ = 0<br>▽ = 0<br>▽ = 0<br>▽ = 0<br>▽ = 0<br>▽ = 0 | THIS DRAWING CONTAINS INFORMATION THAT IS PROPRIETARY TO MOLEX ELECTRONIC TECHNOLOGIES, LLC AND SHOULD NOT BE USED WITHOUT WRITTEN PERMISSION |       | CURRENT REV DESC:   |  | <b>molex</b>               |  |
| 30 over           | ±0.3  |  | DIMENSION UNITS   | SCALE | EC NO: 605910<br>DRWN: JSSHIN 2018/10/11<br>CHK'D: SHCHU 2018/10/15<br>APPR: YSKIM02 2018/10/16 |  |                            |  |
| 10 over 30 under  | ±0.25 | GENERAL TOLERANCES (UNLESS SPECIFIED)  | mm 5:1  |       | INITIAL REVISION:   |  | PRODUCT CUSTOMER DRAWING   |  |
| 10 under          | ±0.2  | ANGULAR TOL ± °  | 4 PLACES ±  |       | DRWN: DYJANG 2004/09/01<br>APPR: CHANGWOOLEE 2004/09/02   |  | DOCUMENT NUMBER            |  |
| ANGLE             | ±3°   | 1 PLACE ±  | 3 PLACES ±  |       | SERIES  |  | DOC TYPE DOC PART REVISION |  |
| GENERAL TOLERANCE |       | 0 PLACES ±   | 2 PLACES ±  |       | MATERIAL NUMBER   |  | SD-35362-002               |  |
|                   |       | DRAFT WHERE APPLICABLE MUST REMAIN WITHIN DIMENSIONS                                     | THIRD ANGLE PROJECTION  |       | DRAWING   |  | CUSTOMER                   |  |
|                   |       |  | A3-SIZE   |       | 35362   |  | SEE TABLE GENERAL MARKET   |  |
|                   |       |  |   |       | SHEET NUMBER  |  | 1 OF 1                     |  |

FOR 2 & 3 CKTS.



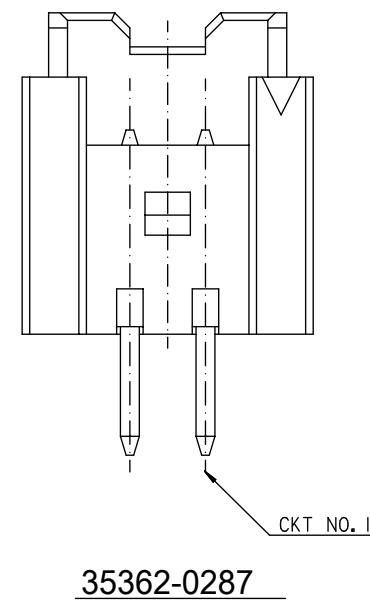
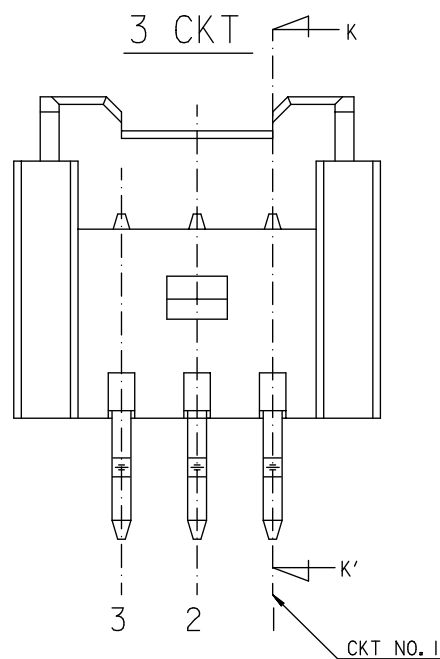
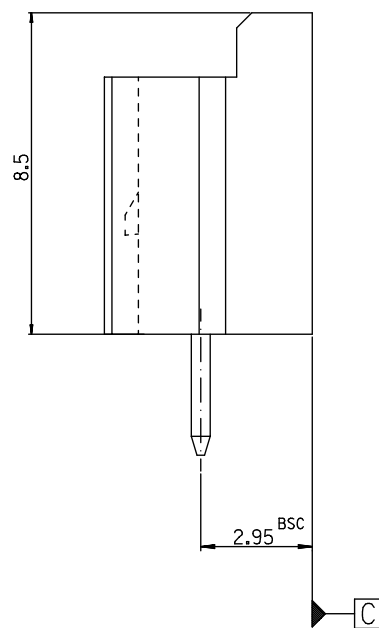
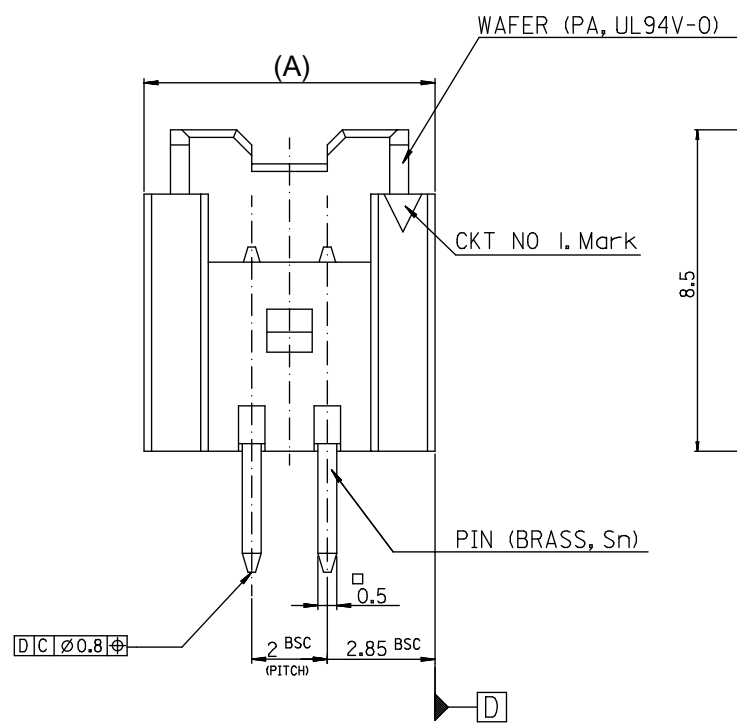
**LEGEND**

SD-35362-\*\*\*\*  
 CKT NO. \_\_\_\_\_ COLOR \_\_\_\_\_

FINAL GOOD (BULK) 5 : SELECTIVE KINK (LEAD FREE)  
 6 : NONE KINK (LEAD FREE)

SUB ASSY (TUBE) 7 : SELECTIVE KINK (LEAD FREE)  
 8 : NONE KINK (LEAD FREE)

0 : NATURAL  
 1 : BLACK  
 2 : RED  
 3 : YELLOW  
 4 : BLUE  
 5 : GREEN  
 6 : TUBE PACKING (Natural Color)  
 7 : TUBE PACKING (Red Color)  
 8 : TUBE PACKING (Blue Color)



**NOTES**

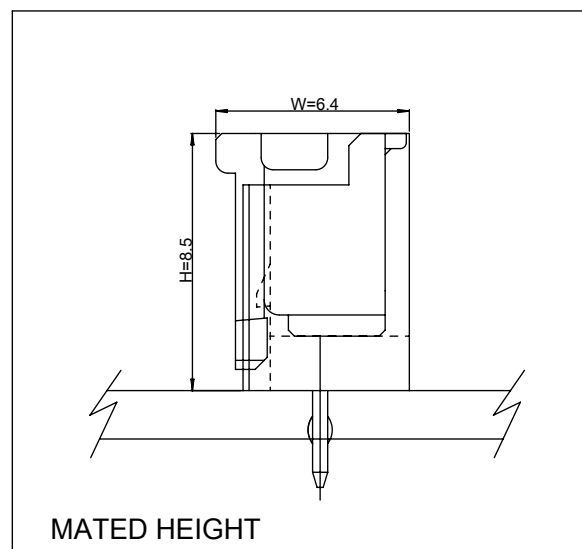
- MATERIAL : UNFILLED POLYAMIDE, UL94V-0  
PIN : BRASS
- FINISHES : PIN - Tin(Sn) 1.0~3.0m OVERALL  
Cu 1.5~3.75m OVERALL
- PRODUCT SPECIFICATION : PS-35507-003
- MATING HOUSING : 35507-\*\*0\*  
MATING TERMINAL : 50212-8000
- KINK

|       |        |   |   |   |
|-------|--------|---|---|---|
|       | CKT NO | 1 | 2 | 3 |
| CKT   |        |   |   |   |
| 2 CKT |        |   |   |   |
| 3 CKT | A      | B | A |   |

6. 35362-0287 IS ONLY KINKED 2P

|             |        |   |   |
|-------------|--------|---|---|
|             | CKT NO | 1 | 2 |
| PRODUCT NO. |        |   |   |
| 35362-0287  | A      | B |   |

|     |   |     |              |            |     |
|-----|---|-----|--------------|------------|-----|
| 7.3 | 4 | 9.7 | 3536203**    | 35362-03** | 3   |
| 5.3 | 2 | 7.7 | 3536202**    | 35362-02** | 2   |
| (C) | B | (A) | MATERIAL NO. | ENG. NO.   | CKT |



|                        |  |         |  |   |  |
|------------------------|--|---------|--|---|--|
| <b>LEAD FREE</b>       |  | SYMBOLS |  | THIS DRAWING CONTAINS INFORMATION THAT IS PROPRIETARY TO MOLEX ELECTRONIC TECHNOLOGIES, LLC AND SHOULD NOT BE USED WITHOUT WRITTEN PERMISSION |  |
| 30 over ±0.3           |  | ▽ = 0   |  | CURRENT REV DESC:   |  |
| 10 over 30 under ±0.25 |  | ▽ = 0   |  | EC NO: 605910   |  |
| 10 under ±0.2          |  | ▽ = 0   |  | DRWN: JSSHIN 2018/10/11   |  |
| ANGLE ±3°              |  | ▽ = 0   |  | CHK'D: SHCHU 2018/10/15   |  |
| GENERAL TOLERANCE      |  | ▽ = 0   |  | APPR: YSKIM02 2018/10/16  |  |
|                        |  | ▽ = 0   |  | INITIAL REVISION:   |  |
|                        |  | ▽ = 0   |  | DRWN: KSKIM 2005/04/29  |  |
|                        |  | ▽ = 0   |  | APPR: CHANGWOOLEE 2005/05/03  |  |
|                        |  | ▽ = 0   |  | DRAFT WHERE APPLICABLE MUST REMAIN WITHIN DIMENSIONS  |  |
|                        |  | ▽ = 0   |  | THIRD ANGLE PROJECTION  |  |
|                        |  | ▽ = 0   |  | DRAWING A3-SIZE   |  |
|                        |  | ▽ = 0   |  | SERIES 35362  |  |
|                        |  | ▽ = 0   |  | MATERIAL NUMBER SEE TABLE   |  |
|                        |  | ▽ = 0   |  | CUSTOMER GENERAL MARKET   |  |
|                        |  | ▽ = 0   |  | SHEET NUMBER 1 OF 1   |  |

|                 |              |
|-----------------|--------------|
| DOCUMENT STATUS | RELEASE DATE |
|-----------------|--------------|