

**PLEASE CHECK WWW.MOLEX.COM FOR LATEST PART INFORMATION**

**Part Number:** [0988171041](#)  
**Status:** **Active**  
**Overview:** NSCC - New Standard Casing Contact  
**Description:** NSCC Single Part, Unsealed, 1.50mm, Female Housing, 3.33mm Pitch NSCC, Wire-to-Wire, 4 Circuits, Black

**Documents:**

|   |   |
|---|---|
| <a href="#">3D Model</a>  | <a href="#">Application Specification 988210001-PS-CH-001 (PDF)</a> |
| <a href="#">Drawing (PDF)</a>                                       | <a href="#">Application Specification AS-98821-001-001 (PDF)</a>    |
| <a href="#">Product Specification PS-98821-001-001 (PDF)</a>        | <a href="#">Packaging Specification PK-31301-635-001 (PDF)</a>      |
| <a href="#">Application Specification 988210001-AS-CH-001 (PDF)</a> | <a href="#">RoHS Certificate of Compliance (PDF)</a>                |

**Application tooling part link**

Application Tooling Part Link 63813-3800

**General**

|                |  |
|----------------|--|
| Product Family | Crimp Housings                                     |
| Series         | <a href="#">98817</a>                              |
| Application    | Power, Wire-to-Wire                                |
| Overview       | <a href="#">NSCC - New Standard Casing Contact</a> |
| Product Name   | NSCC   |
| UPC            | 822348760930                                       |

**Physical**

|                               |                            |
|-------------------------------|----------------------------|
| Breakaway                     | No                         |
| Circuits (maximum)            | 4                          |
| Circuits Detail               | 4 x 1.5mm female terminals |
| Color - Resin                 | Black                      |
| Gender                        | Receptacle                 |
| Glow-Wire Capable             | No                         |
| Keying to Mating Part         | Yes                        |
| Lock to Mating Part           | Yes                        |
| Material - Resin              | Polyester                  |
| Net Weight                    | 2.480/g                    |
| Number of Rows                | 1                          |
| Packaging Type                | Carton                     |
| Panel Mount                   | No                         |
| Pitch - Mating Interface      | 3.33mm                     |
| Pitch - Termination Interface | 3.33mm                     |
| Polarized to Mating Part      | Yes                        |
| Ports                         | 1                          |
| Temperature Range - Operating | -40° to +100°C             |

**Electrical**

Current - Maximum per Contact 10.0A

**Solder Process Data**

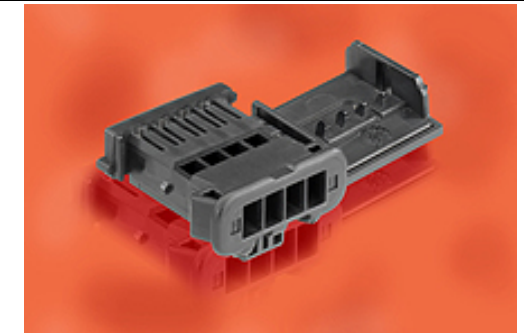
Lead-free Process Capability N/A

**Material Info**

Engineering Number 010201321

**Reference - Drawing Numbers**

|                           |  |
|---------------------------|--|
| Application Specification | 988210001-AS-CH-001, 988210001-PS-CH-001, AS-98821-001-001 |
| Packaging Specification   | PK-31301-635-001   |



Series image - Reference only

**EU ELV**

**Compliant**

**EU RoHS**

**Compliant**

**REACH SVHC**

Not Contained Per - D(2020)9139-DC (19 Jan 2021)

**Halogen-Free**

**Status**

**Not Relevant**

For more information, please visit [Contact US](#)

China ROHS

Not Relevant

ELV

Compliant

RoHS Phthalates

Not Contained

**Search Parts in this Series**

[98817](#) Series

**Mates With**

[988221041](#) Male Receptacle Housing

**Use With**

Female Terminal [NSCC 988971109](#) , [988971119](#) , [988971129](#) or FCI Female Terminal 1.5 Sicma 3

**Application Tooling | FAQ**

*Tooling specifications and manuals are found by selecting the products below. Crimp Height Specifications are then contained in the Application Tooling Specification document.*

**Global**

**Description**

**Product #**

|   |                           |
|---|---------------------------|
| Extractor Tool for Unsealed Receptacle Connectors | <a href="#">638133800</a> |
|---|---------------------------|

This document was generated on 03/23/2021

**PLEASE CHECK [WWW.MOLEX.COM](http://WWW.MOLEX.COM) FOR LATEST PART INFORMATION**