

Redesign – Release lever on female plugs in pitch 5.0x mm

Initial situation

A reliable locking system is one of the main prerequisites for safe operation of equipment. However, increasingly compact formats and greater connection density complicate the handling of plug-in connectors on the front panel. An increasing number of poles also requires greater force when detaching the plug. With these challenges in mind, we have revised the design of the lock & release levers of our female plug connector system OMNIMATE Signal pitch 5.0x mm.



Pic. 1: BLZP 5.08/./180LR..

Pic. 2: BLT 5.08/./180LR..

Pic. 3: BLF 5.08/./180LR..

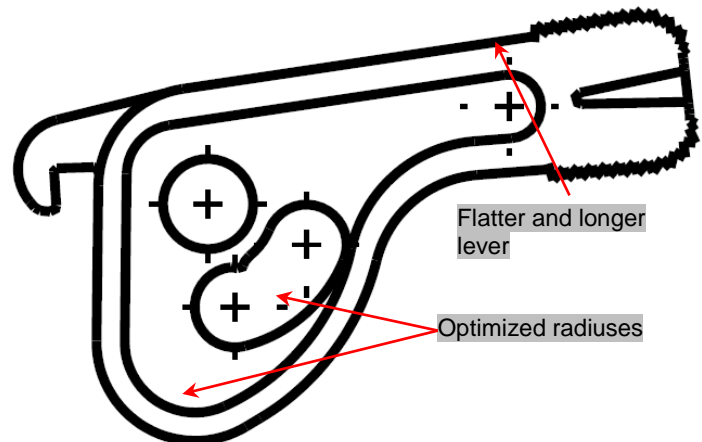
Pic. 4: BLDF 5.08/./180LR..

Technical change

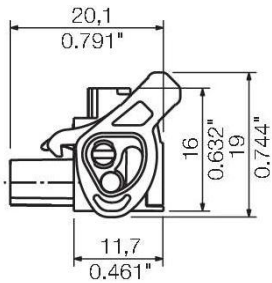
Compared with the previous the new lock & release lever is designed much flatter and it is therefore no longer beyond the upper edge of connector. Due to this compact design more connectors can be placed side by side on the front panel.

Other benefits of optimized lock & release lever:

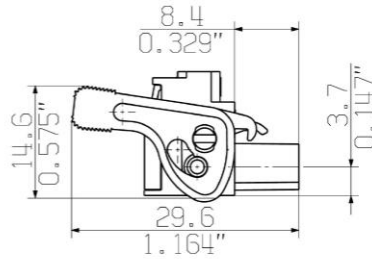
- The lock & release lever latches automatically during insertion (called auto-lock-function). Subsequent locking after plugging is not necessary.
- Higher leverage makes the disconnection of plug easier.
- Improved handling in confined spaces by a longer lever.
- When the lever is actuated, the female connector is released more gently from the component assembly. This is particularly important in case of extreme ambient temperatures.
- When the lock & release lever is locked, the reinforced latching-hook increases the maximum pull-out force and avoids an inadvertent disconnection of the plug.



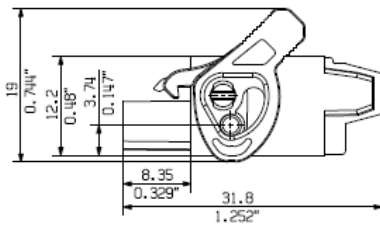
Pic.5: Löseriegel im Detail



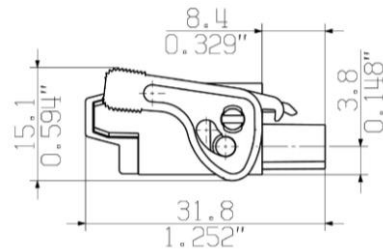
Pic. 6: BLZP 5.08HC../180LR.. old



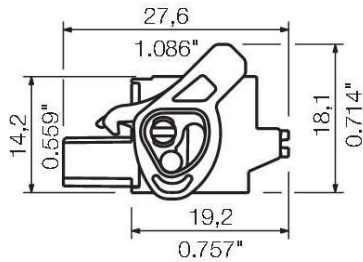
Pic. 7: BLZP 5.08HC../180LR.. new



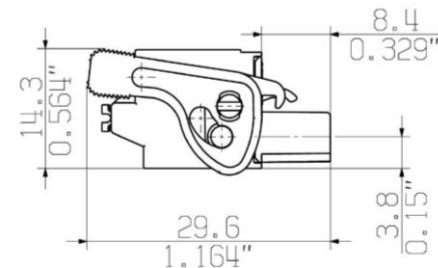
Pic. 8: BLT 5.08HC../180LR.. old



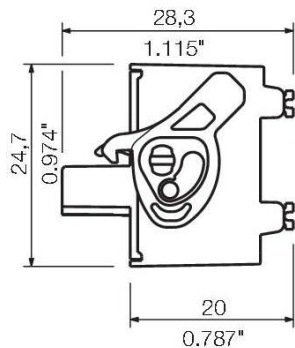
Pic. 9: BLT 5.08HC../180LR.. new



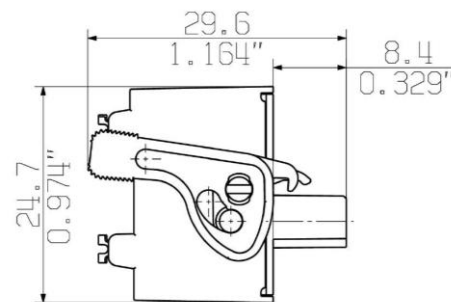
Pic. 10: BLF 5.08HC../180LR.. old



Pic. 11: BLF 5.08HC../180LR.. new



Pic. 12: BLDF 5.08../180LR.. old



Pic. 13: BLDF 5.08../180LR.. new





Effected products

- BLZP 5.0xHC/./180LR..
- BLZP 5.0xHC/./90LR..
- BLZP 5.0xHC/./270LR..
- BLT 5.0xHC/./180LR..
- BLF 5.0xHC/./180LR..
- BLF 5.0xHC/./90LR..
- BLF 5.0xHC/./270LR..
- BLDF 5.0xHC/./180LR..

(Detailed description of the article numbers see below)

Conversion

The conversion in the production will be done gradually and will be finished in April:

Month	Jan 15				Feb 15				Mrz 15				Apr 15			
<i>Product family</i>																
BLF 																
BLZP 																
BLT 																
BLDF 																

Important information

- To ensure a smooth change over to existing customer, the conversion will be done gradually per product families without changing any article numbers! Thus, during the conversion period it may lead to a mixed delivery of orders to individual customers, but never mixed in one packaging unit. An inventory cleaning is not planned so far.
- A negative impact on the delivery performance due to this change is not expected.
- No change have been made to the counter parts of the female plugs (e.g. SL-SMT 5.0xHC, SL 5.08HC, etc.) so that the previous and new levers can still be used.

Regards



Philipp Lüning

Product Support Manager Device Connectivity
Signal Connectors 5.0x mm pitch



Dennis Kräft

Head of Productmanagement
Device Connectivity

Weidmueller – Your partner in Industrial Connectivity
We look forward to sharing ideas with you – **Let's connect.**

Weidmüller Interface GmbH & Co. KG
Klingenbergstraße 16, 32758 Detmold, Deutschland

BLZP 5.08HC/./180LR..

Order No.	Part description
1944830000	BLZP 5.08HC/02/180LR SN OR BX
1944840000	BLZP 5.08HC/03/180LR SN OR BX
1944850000	BLZP 5.08HC/04/180LR SN OR BX
1944860000	BLZP 5.08HC/05/180LR SN OR BX
1944870000	BLZP 5.08HC/06/180LR SN OR BX
1944880000	BLZP 5.08HC/07/180LR SN OR BX
1944890000	BLZP 5.08HC/08/180LR SN OR BX
1944900000	BLZP 5.08HC/09/180LR SN OR BX
1944910000	BLZP 5.08HC/10/180LR SN OR BX
1944920000	BLZP 5.08HC/11/180LR SN OR BX
1944930000	BLZP 5.08HC/12/180LR SN OR BX
1944940000	BLZP 5.08HC/13/180LR SN OR BX
1944950000	BLZP 5.08HC/14/180LR SN OR BX
1944960000	BLZP 5.08HC/15/180LR SN OR BX
1944970000	BLZP 5.08HC/16/180LR SN OR BX
1944980000	BLZP 5.08HC/17/180LR SN OR BX
1944990000	BLZP 5.08HC/18/180LR SN OR BX
1945000000	BLZP 5.08HC/19/180LR SN OR BX
1945010000	BLZP 5.08HC/20/180LR SN OR BX
1945020000	BLZP 5.08HC/21/180LR SN OR BX
1945030000	BLZP 5.08HC/22/180LR SN OR BX
1945040000	BLZP 5.08HC/23/180LR SN OR BX
1945050000	BLZP 5.08HC/24/180LR SN OR BX

Order No.	Part description
1945060000	BLZP 5.08HC/02/180LR SN BK BX
1945070000	BLZP 5.08HC/03/180LR SN BK BX
1945080000	BLZP 5.08HC/04/180LR SN BK BX
1945090000	BLZP 5.08HC/05/180LR SN BK BX
1945100000	BLZP 5.08HC/06/180LR SN BK BX
1945110000	BLZP 5.08HC/07/180LR SN BK BX
1945120000	BLZP 5.08HC/08/180LR SN BK BX
1945130000	BLZP 5.08HC/09/180LR SN BK BX
1945140000	BLZP 5.08HC/10/180LR SN BK BX
1945150000	BLZP 5.08HC/11/180LR SN BK BX
1945160000	BLZP 5.08HC/12/180LR SN BK BX
1945170000	BLZP 5.08HC/13/180LR SN BK BX
1945180000	BLZP 5.08HC/14/180LR SN BK BX
1945190000	BLZP 5.08HC/15/180LR SN BK BX
1945200000	BLZP 5.08HC/16/180LR SN BK BX
1945210000	BLZP 5.08HC/17/180LR SN BK BX
1945220000	BLZP 5.08HC/18/180LR SN BK BX
1945230000	BLZP 5.08HC/19/180LR SN BK BX
1945240000	BLZP 5.08HC/20/180LR SN BK BX
1945250000	BLZP 5.08HC/21/180LR SN BK BX
1945260000	BLZP 5.08HC/22/180LR SN BK BX
1945270000	BLZP 5.08HC/23/180LR SN BK BX
1945280000	BLZP 5.08HC/24/180LR SN BK BX

BLZP 5.08HC/./90LR..

Order No.	Part description
1087250000	BLZP 5.08HC/02/90LR SN OR BX
1087260000	BLZP 5.08HC/03/90LR SN OR BX
1087270000	BLZP 5.08HC/04/90LR SN OR BX
1087280000	BLZP 5.08HC/05/90LR SN OR BX
1087290000	BLZP 5.08HC/06/90LR SN OR BX
1087300000	BLZP 5.08HC/07/90LR SN OR BX
1087310000	BLZP 5.08HC/08/90LR SN OR BX
1087320000	BLZP 5.08HC/09/90LR SN OR BX
1087330000	BLZP 5.08HC/10/90LR SN OR BX
1087340000	BLZP 5.08HC/11/90LR SN OR BX
1087350000	BLZP 5.08HC/12/90LR SN OR BX
1087360000	BLZP 5.08HC/13/90LR SN OR BX
1087370000	BLZP 5.08HC/14/90LR SN OR BX
1087380000	BLZP 5.08HC/15/90LR SN OR BX
1087390000	BLZP 5.08HC/16/90LR SN OR BX
1087400000	BLZP 5.08HC/17/90LR SN OR BX
1087410000	BLZP 5.08HC/18/90LR SN OR BX
1087420000	BLZP 5.08HC/19/90LR SN OR BX
1087430000	BLZP 5.08HC/20/90LR SN OR BX
1087440000	BLZP 5.08HC/21/90LR SN OR BX
1087450000	BLZP 5.08HC/22/90LR SN OR BX
1087460000	BLZP 5.08HC/23/90LR SN OR BX
1087470000	BLZP 5.08HC/24/90LR SN OR BX

Order No.	Part description
1087020000	BLZP 5.08HC/02/90LR SN BK BX
1087030000	BLZP 5.08HC/03/90LR SN BK BX
1087040000	BLZP 5.08HC/04/90LR SN BK BX
1087050000	BLZP 5.08HC/05/90LR SN BK BX
1087060000	BLZP 5.08HC/06/90LR SN BK BX
1087070000	BLZP 5.08HC/07/90LR SN BK BX
1087080000	BLZP 5.08HC/08/90LR SN BK BX
1087100000	BLZP 5.08HC/09/90LR SN BK BX
1087110000	BLZP 5.08HC/10/90LR SN BK BX
1087120000	BLZP 5.08HC/11/90LR SN BK BX
1087130000	BLZP 5.08HC/12/90LR SN BK BX
1087140000	BLZP 5.08HC/13/90LR SN BK BX
1087150000	BLZP 5.08HC/14/90LR SN BK BX
1087160000	BLZP 5.08HC/15/90LR SN BK BX
1068510000	BLZP 5.08HC/16/90LR SN BK BX
1087170000	BLZP 5.08HC/17/90LR SN BK BX
1087180000	BLZP 5.08HC/18/90LR SN BK BX
1087190000	BLZP 5.08HC/19/90LR SN BK BX
1087200000	BLZP 5.08HC/20/90LR SN BK BX
1087210000	BLZP 5.08HC/21/90LR SN BK BX
1087220000	BLZP 5.08HC/22/90LR SN BK BX
1087230000	BLZP 5.08HC/23/90LR SN BK BX
1087240000	BLZP 5.08HC/24/90LR SN BK BX

BLZP 5.08HC/./270LR..

Order No.	Part description
1947530000	BLZP 5.08HC/02/270LR SN OR BX
1947540000	BLZP 5.08HC/03/270LR SN OR BX
1947550000	BLZP 5.08HC/04/270LR SN OR BX
1947560000	BLZP 5.08HC/05/270LR SN OR BX
1947570000	BLZP 5.08HC/06/270LR SN OR BX
1947580000	BLZP 5.08HC/07/270LR SN OR BX
1947590000	BLZP 5.08HC/08/270LR SN OR BX
1947600000	BLZP 5.08HC/09/270LR SN OR BX
1947610000	BLZP 5.08HC/10/270LR SN OR BX
1947620000	BLZP 5.08HC/11/270LR SN OR BX

Order No.	Part description
1947760000	BLZP 5.08HC/02/270LR SN BK BX
1947770000	BLZP 5.08HC/03/270LR SN BK BX
1947780000	BLZP 5.08HC/04/270LR SN BK BX
1947790000	BLZP 5.08HC/05/270LR SN BK BX
1947800000	BLZP 5.08HC/06/270LR SN BK BX
1947810000	BLZP 5.08HC/07/270LR SN BK BX
1947820000	BLZP 5.08HC/08/270LR SN BK BX
1947830000	BLZP 5.08HC/09/270LR SN BK BX
1947840000	BLZP 5.08HC/10/270LR SN BK BX
1947850000	BLZP 5.08HC/11/270LR SN BK BX

1947630000 BLZP 5.08HC/12/270LR SN OR BX
 1947640000 BLZP 5.08HC/13/270LR SN OR BX
 1947650000 BLZP 5.08HC/14/270LR SN OR BX
 1947660000 BLZP 5.08HC/15/270LR SN OR BX
 1947670000 BLZP 5.08HC/16/270LR SN OR BX
 1947680000 BLZP 5.08HC/17/270LR SN OR BX
 1947690000 BLZP 5.08HC/18/270LR SN OR BX
 1947700000 BLZP 5.08HC/19/270LR SN OR BX
 1947710000 BLZP 5.08HC/20/270LR SN OR BX
 1947720000 BLZP 5.08HC/21/270LR SN OR BX
 1947730000 BLZP 5.08HC/22/270LR SN OR BX
 1947740000 BLZP 5.08HC/23/270LR SN OR BX
 1947750000 BLZP 5.08HC/24/270LR SN OR BX

1947860000 BLZP 5.08HC/12/270LR SN BK BX
 1947870000 BLZP 5.08HC/13/270LR SN BK BX
 1947880000 BLZP 5.08HC/14/270LR SN BK BX
 1947890000 BLZP 5.08HC/15/270LR SN BK BX
 1947900000 BLZP 5.08HC/16/270LR SN BK BX
 1947910000 BLZP 5.08HC/17/270LR SN BK BX
 1947920000 BLZP 5.08HC/18/270LR SN BK BX
 1947930000 BLZP 5.08HC/19/270LR SN BK BX
 1947940000 BLZP 5.08HC/20/270LR SN BK BX
 1947950000 BLZP 5.08HC/21/270LR SN BK BX
 1947960000 BLZP 5.08HC/22/270LR SN BK BX
 1947970000 BLZP 5.08HC/23/270LR SN BK BX
 1947980000 BLZP 5.08HC/24/270LR SN BK BX

BLT 5.08HC../180LR..

Order No.	Part description
1890220000	BLT 5.08HC/02/180LR SN OR BX
1890230000	BLT 5.08HC/03/180LR SN OR BX
1890240000	BLT 5.08HC/04/180LR SN OR BX
1890250000	BLT 5.08HC/05/180LR SN OR BX
1890260000	BLT 5.08HC/06/180LR SN OR BX
1890270000	BLT 5.08HC/07/180LR SN OR BX
1890280000	BLT 5.08HC/08/180LR SN OR BX
1890290000	BLT 5.08HC/09/180LR SN OR BX
1890300000	BLT 5.08HC/10/180LR SN OR BX
1890310000	BLT 5.08HC/11/180LR SN OR BX
1890320000	BLT 5.08HC/12/180LR SN OR BX
1890330000	BLT 5.08HC/13/180LR SN OR BX
1890340000	BLT 5.08HC/14/180LR SN OR BX
1890350000	BLT 5.08HC/15/180LR SN OR BX
1890360000	BLT 5.08HC/16/180LR SN OR BX
1890370000	BLT 5.08HC/17/180LR SN OR BX
1890380000	BLT 5.08HC/18/180LR SN OR BX
1890390000	BLT 5.08HC/19/180LR SN OR BX
1890400000	BLT 5.08HC/20/180LR SN OR BX
1890410000	BLT 5.08HC/21/180LR SN OR BX
1890420000	BLT 5.08HC/22/180LR SN OR BX
1890430000	BLT 5.08HC/23/180LR SN OR BX
1890440000	BLT 5.08HC/24/180LR SN OR BX

Order No.	Part description
1894130000	BLT 5.08HC/02/180LR SN BK BX
1894140000	BLT 5.08HC/03/180LR SN BK BX
1894150000	BLT 5.08HC/04/180LR SN BK BX
1894160000	BLT 5.08HC/05/180LR SN BK BX
1894170000	BLT 5.08HC/06/180LR SN BK BX
1894180000	BLT 5.08HC/07/180LR SN BK BX
1894190000	BLT 5.08HC/08/180LR SN BK BX
1894200000	BLT 5.08HC/09/180LR SN BK BX
1894210000	BLT 5.08HC/10/180LR SN BK BX
1894220000	BLT 5.08HC/11/180LR SN BK BX
1894230000	BLT 5.08HC/12/180LR SN BK BX
1894240000	BLT 5.08HC/13/180LR SN BK BX
1894250000	BLT 5.08HC/14/180LR SN BK BX
1894260000	BLT 5.08HC/15/180LR SN BK BX
1894270000	BLT 5.08HC/16/180LR SN BK BX
1894280000	BLT 5.08HC/17/180LR SN BK BX
1894290000	BLT 5.08HC/18/180LR SN BK BX
1894310000	BLT 5.08HC/19/180LR SN BK BX
1894330000	BLT 5.08HC/20/180LR SN BK BX
1894340000	BLT 5.08HC/21/180LR SN BK BX
1894350000	BLT 5.08HC/22/180LR SN BK BX
1894360000	BLT 5.08HC/23/180LR SN BK BX
1894370000	BLT 5.08HC/24/180LR SN BK BX

BLF 5.08HC../180LR..

Order No.	Part description
1014370000	BLF 5.08HC/02/180LR SN OR BX
1014380000	BLF 5.08HC/03/180LR SN OR BX
1014390000	BLF 5.08HC/04/180LR SN OR BX
1014410000	BLF 5.08HC/05/180LR SN OR BX
1014420000	BLF 5.08HC/06/180LR SN OR BX
1014430000	BLF 5.08HC/07/180LR SN OR BX
1014440000	BLF 5.08HC/08/180LR SN OR BX
1014450000	BLF 5.08HC/09/180LR SN OR BX
1014460000	BLF 5.08HC/10/180LR SN OR BX
1014470000	BLF 5.08HC/11/180LR SN OR BX
1014480000	BLF 5.08HC/12/180LR SN OR BX
1014490000	BLF 5.08HC/13/180LR SN OR BX
1014510000	BLF 5.08HC/14/180LR SN OR BX
1014520000	BLF 5.08HC/15/180LR SN OR BX
1014530000	BLF 5.08HC/16/180LR SN OR BX
1014540000	BLF 5.08HC/17/180LR SN OR BX
1014550000	BLF 5.08HC/18/180LR SN OR BX
1014560000	BLF 5.08HC/19/180LR SN OR BX
1014570000	BLF 5.08HC/20/180LR SN OR BX
1014580000	BLF 5.08HC/21/180LR SN OR BX
1014590000	BLF 5.08HC/22/180LR SN OR BX
1014610000	BLF 5.08HC/23/180LR SN OR BX
1014620000	BLF 5.08HC/24/180LR SN OR BX

Order No.	Part description
1014120000	BLF 5.08HC/02/180LR SN BK BX
1014130000	BLF 5.08HC/03/180LR SN BK BX
1014140000	BLF 5.08HC/04/180LR SN BK BX
1014150000	BLF 5.08HC/05/180LR SN BK BX
1014160000	BLF 5.08HC/06/180LR SN BK BX
1014170000	BLF 5.08HC/07/180LR SN BK BX
1014180000	BLF 5.08HC/08/180LR SN BK BX
1014190000	BLF 5.08HC/09/180LR SN BK BX
1014210000	BLF 5.08HC/10/180LR SN BK BX
1014220000	BLF 5.08HC/11/180LR SN BK BX
1014230000	BLF 5.08HC/12/180LR SN BK BX
1014240000	BLF 5.08HC/13/180LR SN BK BX
1014250000	BLF 5.08HC/14/180LR SN BK BX
1014260000	BLF 5.08HC/15/180LR SN BK BX
1014270000	BLF 5.08HC/16/180LR SN BK BX
1014280000	BLF 5.08HC/17/180LR SN BK BX
1014290000	BLF 5.08HC/18/180LR SN BK BX
1014310000	BLF 5.08HC/19/180LR SN BK BX
1014320000	BLF 5.08HC/20/180LR SN BK BX
1014330000	BLF 5.08HC/21/180LR SN BK BX
1014340000	BLF 5.08HC/22/180LR SN BK BX
1014350000	BLF 5.08HC/23/180LR SN BK BX
1014360000	BLF 5.08HC/24/180LR SN BK BX

BLF 5.08HC/./90LR..

Order No.	Part description	Order No.	Part description
1002280000	BLF 5.08HC/02/90LR SN OR BX	1000410001	BLF 5.08HC/02/90LR SN BK BX
1002290000	BLF 5.08HC/03/90LR SN OR BX	1000420001	BLF 5.08HC/03/90LR SN BK BX
1002300000	BLF 5.08HC/04/90LR SN OR BX	1000430001	BLF 5.08HC/04/90LR SN BK BX
1002310000	BLF 5.08HC/05/90LR SN OR BX	1000440001	BLF 5.08HC/05/90LR SN BK BX
1002320000	BLF 5.08HC/06/90LR SN OR BX	1000450001	BLF 5.08HC/06/90LR SN BK BX
1002330000	BLF 5.08HC/07/90LR SN OR BX	1000460001	BLF 5.08HC/07/90LR SN BK BX
1002340000	BLF 5.08HC/08/90LR SN OR BX	1000470001	BLF 5.08HC/08/90LR SN BK BX
1002350000	BLF 5.08HC/09/90LR SN OR BX	1000480001	BLF 5.08HC/09/90LR SN BK BX
1002360000	BLF 5.08HC/10/90LR SN OR BX	1000490001	BLF 5.08HC/10/90LR SN BK BX
1002370000	BLF 5.08HC/11/90LR SN OR BX	1000500001	BLF 5.08HC/11/90LR SN BK BX
1002380000	BLF 5.08HC/12/90LR SN OR BX	1000510001	BLF 5.08HC/12/90LR SN BK BX
1002390000	BLF 5.08HC/13/90LR SN OR BX	1000520001	BLF 5.08HC/13/90LR SN BK BX
1002400000	BLF 5.08HC/14/90LR SN OR BX	1000530001	BLF 5.08HC/14/90LR SN BK BX
1002410000	BLF 5.08HC/15/90LR SN OR BX	1000540001	BLF 5.08HC/15/90LR SN BK BX
1002420000	BLF 5.08HC/16/90LR SN OR BX	1000550001	BLF 5.08HC/16/90LR SN BK BX
1002430000	BLF 5.08HC/17/90LR SN OR BX	1000560001	BLF 5.08HC/17/90LR SN BK BX
1002440000	BLF 5.08HC/18/90LR SN OR BX	1000570001	BLF 5.08HC/18/90LR SN BK BX
1002450000	BLF 5.08HC/19/90LR SN OR BX	1000580001	BLF 5.08HC/19/90LR SN BK BX
1002460000	BLF 5.08HC/20/90LR SN OR BX	1000590001	BLF 5.08HC/20/90LR SN BK BX

BLF 5.08HC/./270LR..

Order No.	Part description	Order No.	Part description
1983080000	BLF 5.08HC/02/270LR SN OR BX	1982310000	BLF 5.08HC/02/270LR SN BK BX
1983090000	BLF 5.08HC/03/270LR SN OR BX	1982320000	BLF 5.08HC/03/270LR SN BK BX
1983100000	BLF 5.08HC/04/270LR SN OR BX	1982330000	BLF 5.08HC/04/270LR SN BK BX
1983110000	BLF 5.08HC/05/270LR SN OR BX	1982340000	BLF 5.08HC/05/270LR SN BK BX
1983120000	BLF 5.08HC/06/270LR SN OR BX	1982350000	BLF 5.08HC/06/270LR SN BK BX
1983130000	BLF 5.08HC/07/270LR SN OR BX	1982360000	BLF 5.08HC/07/270LR SN BK BX
1983140000	BLF 5.08HC/08/270LR SN OR BX	1982370000	BLF 5.08HC/08/270LR SN BK BX
1983150000	BLF 5.08HC/09/270LR SN OR BX	1982380000	BLF 5.08HC/09/270LR SN BK BX
1983160000	BLF 5.08HC/10/270LR SN OR BX	1982390000	BLF 5.08HC/10/270LR SN BK BX
1983170000	BLF 5.08HC/11/270LR SN OR BX	1982400000	BLF 5.08HC/11/270LR SN BK BX
1983180000	BLF 5.08HC/12/270LR SN OR BX	1982410000	BLF 5.08HC/12/270LR SN BK BX
1983190000	BLF 5.08HC/13/270LR SN OR BX	1982420000	BLF 5.08HC/13/270LR SN BK BX
1983200000	BLF 5.08HC/14/270LR SN OR BX	1982430000	BLF 5.08HC/14/270LR SN BK BX
1983210000	BLF 5.08HC/15/270LR SN OR BX	1982440000	BLF 5.08HC/15/270LR SN BK BX
1983220000	BLF 5.08HC/16/270LR SN OR BX	1982450000	BLF 5.08HC/16/270LR SN BK BX
1983230000	BLF 5.08HC/17/270LR SN OR BX	1982460000	BLF 5.08HC/17/270LR SN BK BX
1983240000	BLF 5.08HC/18/270LR SN OR BX	1982470000	BLF 5.08HC/18/270LR SN BK BX
1983250000	BLF 5.08HC/19/270LR SN OR BX	1982480000	BLF 5.08HC/19/270LR SN BK BX
1983260000	BLF 5.08HC/20/270LR SN OR BX	1982490000	BLF 5.08HC/20/270LR SN BK BX

BLDF 5.08/./180LR..

Order No.	Part description	Order No.	Part description
1065130000	BLDF 5.08/02/180LR SN OR BX	1001010000	BLDF 5.08/02/180LR SN BK BX
1065140000	BLDF 5.08/03/180LR SN OR BX	1001020000	BLDF 5.08/03/180LR SN BK BX
1065150000	BLDF 5.08/04/180LR SN OR BX	1001030000	BLDF 5.08/04/180LR SN BK BX
1065160000	BLDF 5.08/05/180LR SN OR BX	1001040000	BLDF 5.08/05/180LR SN BK BX
1065170000	BLDF 5.08/06/180LR SN OR BX	1001050000	BLDF 5.08/06/180LR SN BK BX
1065180000	BLDF 5.08/07/180LR SN OR BX	1001060000	BLDF 5.08/07/180LR SN BK BX
1065190000	BLDF 5.08/08/180LR SN OR BX	1001070000	BLDF 5.08/08/180LR SN BK BX

BLZP 5.00HC/./180LR..

Order No.	Part description
1956370000	BLZP 5.00HC/02/180LR SN OR BX
1956360000	BLZP 5.00HC/03/180LR SN OR BX
1956350000	BLZP 5.00HC/04/180LR SN OR BX
1956340000	BLZP 5.00HC/05/180LR SN OR BX
1956330000	BLZP 5.00HC/06/180LR SN OR BX
1956320000	BLZP 5.00HC/07/180LR SN OR BX
1956310000	BLZP 5.00HC/08/180LR SN OR BX
1956300000	BLZP 5.00HC/09/180LR SN OR BX
1956290000	BLZP 5.00HC/10/180LR SN OR BX
1956280000	BLZP 5.00HC/11/180LR SN OR BX
1956270000	BLZP 5.00HC/12/180LR SN OR BX
1956260000	BLZP 5.00HC/13/180LR SN OR BX
1956250000	BLZP 5.00HC/14/180LR SN OR BX
1956240000	BLZP 5.00HC/15/180LR SN OR BX
1956230000	BLZP 5.00HC/16/180LR SN OR BX
1956220000	BLZP 5.00HC/17/180LR SN OR BX
1956210000	BLZP 5.00HC/18/180LR SN OR BX
1956200000	BLZP 5.00HC/19/180LR SN OR BX
1956190000	BLZP 5.00HC/20/180LR SN OR BX
1956180000	BLZP 5.00HC/21/180LR SN OR BX
1956170000	BLZP 5.00HC/22/180LR SN OR BX
1956160000	BLZP 5.00HC/23/180LR SN OR BX
1956150000	BLZP 5.00HC/24/180LR SN OR BX

Order No.	Part description
1956600000	BLZP 5.00HC/02/180LR SN BK BX
1956590000	BLZP 5.00HC/03/180LR SN BK BX
1956580000	BLZP 5.00HC/04/180LR SN BK BX
1956570000	BLZP 5.00HC/05/180LR SN BK BX
1956560000	BLZP 5.00HC/06/180LR SN BK BX
1956550000	BLZP 5.00HC/07/180LR SN BK BX
1956540000	BLZP 5.00HC/08/180LR SN BK BX
1956530000	BLZP 5.00HC/09/180LR SN BK BX
1956520000	BLZP 5.00HC/10/180LR SN BK BX
1956510000	BLZP 5.00HC/11/180LR SN BK BX
1956500000	BLZP 5.00HC/12/180LR SN BK BX
1956490000	BLZP 5.00HC/13/180LR SN BK BX
1956480000	BLZP 5.00HC/14/180LR SN BK BX
1956470000	BLZP 5.00HC/15/180LR SN BK BX
1956460000	BLZP 5.00HC/16/180LR SN BK BX
1956450000	BLZP 5.00HC/17/180LR SN BK BX
1956440000	BLZP 5.00HC/18/180LR SN BK BX
1956430000	BLZP 5.00HC/19/180LR SN BK BX
1956420000	BLZP 5.00HC/20/180LR SN BK BX
1956410000	BLZP 5.00HC/21/180LR SN BK BX
1956400000	BLZP 5.00HC/22/180LR SN BK BX
1956390000	BLZP 5.00HC/23/180LR SN BK BX
1956380000	BLZP 5.00HC/24/180LR SN BK BX

BLZP 5.00HC/./90LR..

Order No.	Part description
1097550000	BLZP 5.00HC/02/90LR SN OR BX
1097570000	BLZP 5.00HC/03/90LR SN OR BX
1097590000	BLZP 5.00HC/04/90LR SN OR BX
1097610000	BLZP 5.00HC/05/90LR SN OR BX
1097630000	BLZP 5.00HC/06/90LR SN OR BX
1097650000	BLZP 5.00HC/07/90LR SN OR BX
1097680000	BLZP 5.00HC/08/90LR SN OR BX
1097700000	BLZP 5.00HC/09/90LR SN OR BX
1097720000	BLZP 5.00HC/10/90LR SN OR BX
1097740000	BLZP 5.00HC/11/90LR SN OR BX
1097760000	BLZP 5.00HC/12/90LR SN OR BX
1097780000	BLZP 5.00HC/13/90LR SN OR BX
1097800000	BLZP 5.00HC/14/90LR SN OR BX
1097820000	BLZP 5.00HC/15/90LR SN OR BX
1097840000	BLZP 5.00HC/16/90LR SN OR BX
1097860000	BLZP 5.00HC/17/90LR SN OR BX
1097880000	BLZP 5.00HC/18/90LR SN OR BX
1097900000	BLZP 5.00HC/19/90LR SN OR BX
1097920000	BLZP 5.00HC/20/90LR SN OR BX
1097940000	BLZP 5.00HC/21/90LR SN OR BX
1097960000	BLZP 5.00HC/22/90LR SN OR BX
1097980000	BLZP 5.00HC/23/90LR SN OR BX
1098260000	BLZP 5.00HC/24/90LR SN OR BX

Order No.	Part description
1098280000	BLZP 5.00HC/02/90LR SN BK BX
1098300000	BLZP 5.00HC/03/90LR SN BK BX
1098320000	BLZP 5.00HC/04/90LR SN BK BX
1098340000	BLZP 5.00HC/05/90LR SN BK BX
1098360000	BLZP 5.00HC/06/90LR SN BK BX
1098380000	BLZP 5.00HC/07/90LR SN BK BX
1098400000	BLZP 5.00HC/08/90LR SN BK BX
1098420000	BLZP 5.00HC/09/90LR SN BK BX
1098440000	BLZP 5.00HC/10/90LR SN BK BX
1098460000	BLZP 5.00HC/11/90LR SN BK BX
1098480000	BLZP 5.00HC/12/90LR SN BK BX
1098500000	BLZP 5.00HC/13/90LR SN BK BX
1098520000	BLZP 5.00HC/14/90LR SN BK BX
1098540000	BLZP 5.00HC/15/90LR SN BK BX
1098560000	BLZP 5.00HC/16/90LR SN BK BX
1098580000	BLZP 5.00HC/17/90LR SN BK BX
1098600000	BLZP 5.00HC/18/90LR SN BK BX
1098620000	BLZP 5.00HC/19/90LR SN BK BX
1098640000	BLZP 5.00HC/20/90LR SN BK BX
1098660000	BLZP 5.00HC/21/90LR SN BK BX
1098680000	BLZP 5.00HC/22/90LR SN BK BX
1098700000	BLZP 5.00HC/23/90LR SN BK BX
1098720000	BLZP 5.00HC/24/90LR SN BK BX

BLZP 5.00HC/./270LR..

Order No.	Part description
1960960000	BLZP 5.00HC/02/270LR SN OR BX
1960950000	BLZP 5.00HC/03/270LR SN OR BX
1960940000	BLZP 5.00HC/04/270LR SN OR BX
1960930000	BLZP 5.00HC/05/270LR SN OR BX
1960920000	BLZP 5.00HC/06/270LR SN OR BX
1960910000	BLZP 5.00HC/07/270LR SN OR BX
1960900000	BLZP 5.00HC/08/270LR SN OR BX
1960890000	BLZP 5.00HC/09/270LR SN OR BX
1960880000	BLZP 5.00HC/10/270LR SN OR BX
1960870000	BLZP 5.00HC/11/270LR SN OR BX
1960860000	BLZP 5.00HC/12/270LR SN OR BX

Order No.	Part description
1961190000	BLZP 5.00HC/02/270LR SN BK BX
1961180000	BLZP 5.00HC/03/270LR SN BK BX
1961170000	BLZP 5.00HC/04/270LR SN BK BX
1961160000	BLZP 5.00HC/05/270LR SN BK BX
1961150000	BLZP 5.00HC/06/270LR SN BK BX
1961140000	BLZP 5.00HC/07/270LR SN BK BX
1961130000	BLZP 5.00HC/08/270LR SN BK BX
1961120000	BLZP 5.00HC/09/270LR SN BK BX
1961110000	BLZP 5.00HC/10/270LR SN BK BX
1961100000	BLZP 5.00HC/11/270LR SN BK BX
1961090000	BLZP 5.00HC/12/270LR SN BK BX

1960850000	BLZP 5.00HC/13/270LR SN OR BX	1961080000	BLZP 5.00HC/13/270LR SN BK BX
1960840000	BLZP 5.00HC/14/270LR SN OR BX	1961070000	BLZP 5.00HC/14/270LR SN BK BX
1960830000	BLZP 5.00HC/15/270LR SN OR BX	1961060000	BLZP 5.00HC/15/270LR SN BK BX
1960820000	BLZP 5.00HC/16/270LR SN OR BX	1961050000	BLZP 5.00HC/16/270LR SN BK BX
1960810000	BLZP 5.00HC/17/270LR SN OR BX	1961040000	BLZP 5.00HC/17/270LR SN BK BX
1960800000	BLZP 5.00HC/18/270LR SN OR BX	1961030000	BLZP 5.00HC/18/270LR SN BK BX
1960790000	BLZP 5.00HC/19/270LR SN OR BX	1961020000	BLZP 5.00HC/19/270LR SN BK BX
1960780000	BLZP 5.00HC/20/270LR SN OR BX	1961010000	BLZP 5.00HC/20/270LR SN BK BX
1960770000	BLZP 5.00HC/21/270LR SN OR BX	1961000000	BLZP 5.00HC/21/270LR SN BK BX
1960760000	BLZP 5.00HC/22/270LR SN OR BX	1960990000	BLZP 5.00HC/22/270LR SN BK BX
1960750000	BLZP 5.00HC/23/270LR SN OR BX	1960980000	BLZP 5.00HC/23/270LR SN BK BX
1960740000	BLZP 5.00HC/24/270LR SN OR BX	1960970000	BLZP 5.00HC/24/270LR SN BK BX

BLF 5.00HC/./180LR..

Order No.	Part description	Order No.	Part description
1016340000	BLF 5.00HC/02/180LR SN OR BX	1016140000	BLF 5.00HC/02/180LR SN BK BX
1016350000	BLF 5.00HC/03/180LR SN OR BX	1016150000	BLF 5.00HC/03/180LR SN BK BX
1016360000	BLF 5.00HC/04/180LR SN OR BX	1016170000	BLF 5.00HC/04/180LR SN BK BX
1016370000	BLF 5.00HC/05/180LR SN OR BX	1016180000	BLF 5.00HC/05/180LR SN BK BX
1016380000	BLF 5.00HC/06/180LR SN OR BX	1016190000	BLF 5.00HC/06/180LR SN BK BX
1016390000	BLF 5.00HC/07/180LR SN OR BX	1016210000	BLF 5.00HC/07/180LR SN BK BX
1016410000	BLF 5.00HC/08/180LR SN OR BX	1016220000	BLF 5.00HC/08/180LR SN BK BX
1016420000	BLF 5.00HC/09/180LR SN OR BX	1016230000	BLF 5.00HC/09/180LR SN BK BX
1016430000	BLF 5.00HC/10/180LR SN OR BX	1016240000	BLF 5.00HC/10/180LR SN BK BX
1016440000	BLF 5.00HC/11/180LR SN OR BX	1016250000	BLF 5.00HC/11/180LR SN BK BX
1016450000	BLF 5.00HC/12/180LR SN OR BX	1016260000	BLF 5.00HC/12/180LR SN BK BX
1016460000	BLF 5.00HC/13/180LR SN OR BX	1016270000	BLF 5.00HC/13/180LR SN BK BX
1016470000	BLF 5.00HC/14/180LR SN OR BX	1016280000	BLF 5.00HC/14/180LR SN BK BX
1016480000	BLF 5.00HC/15/180LR SN OR BX	1016290000	BLF 5.00HC/15/180LR SN BK BX
1016490000	BLF 5.00HC/16/180LR SN OR BX	1016310000	BLF 5.00HC/16/180LR SN BK BX
1016510000	BLF 5.00HC/17/180LR SN OR BX	1016320000	BLF 5.00HC/17/180LR SN BK BX
1016520000	BLF 5.00HC/18/180LR SN OR BX	1016330000	BLF 5.00HC/18/180LR SN BK BX

BLF 5.00HC/./90LR..

Order No.	Part description	Order No.	Part description
1980870000	BLF 5.00HC/02/90LR SN OR BX	1979790000	BLF 5.00HC/02/90LR SN BK BX
1980880000	BLF 5.00HC/03/90LR SN OR BX	1979800000	BLF 5.00HC/03/90LR SN BK BX
1980890000	BLF 5.00HC/04/90LR SN OR BX	1979810000	BLF 5.00HC/04/90LR SN BK BX
1980900000	BLF 5.00HC/05/90LR SN OR BX	1979820000	BLF 5.00HC/05/90LR SN BK BX
1980910000	BLF 5.00HC/06/90LR SN OR BX	1979830000	BLF 5.00HC/06/90LR SN BK BX
1980920000	BLF 5.00HC/07/90LR SN OR BX	1979840000	BLF 5.00HC/07/90LR SN BK BX
1980930000	BLF 5.00HC/08/90LR SN OR BX	1979850000	BLF 5.00HC/08/90LR SN BK BX
1980940000	BLF 5.00HC/09/90LR SN OR BX	1979860000	BLF 5.00HC/09/90LR SN BK BX
1980950000	BLF 5.00HC/10/90LR SN OR BX	1979870000	BLF 5.00HC/10/90LR SN BK BX
1980960000	BLF 5.00HC/11/90LR SN OR BX	1979880000	BLF 5.00HC/11/90LR SN BK BX
1980970000	BLF 5.00HC/12/90LR SN OR BX	1979890000	BLF 5.00HC/12/90LR SN BK BX
1980980000	BLF 5.00HC/13/90LR SN OR BX	1979900000	BLF 5.00HC/13/90LR SN BK BX
1980990000	BLF 5.00HC/14/90LR SN OR BX	1979910000	BLF 5.00HC/14/90LR SN BK BX
1981000000	BLF 5.00HC/15/90LR SN OR BX	1979920000	BLF 5.00HC/15/90LR SN BK BX
1981010000	BLF 5.00HC/16/90LR SN OR BX	1979930000	BLF 5.00HC/16/90LR SN BK BX
1981020000	BLF 5.00HC/17/90LR SN OR BX	1979940000	BLF 5.00HC/17/90LR SN BK BX
1981030000	BLF 5.00HC/18/90LR SN OR BX	1979950000	BLF 5.00HC/18/90LR SN BK BX
1981040000	BLF 5.00HC/19/90LR SN OR BX	1979960000	BLF 5.00HC/19/90LR SN BK BX
1981050000	BLF 5.00HC/20/90LR SN OR BX	1979970000	BLF 5.00HC/20/90LR SN BK BX