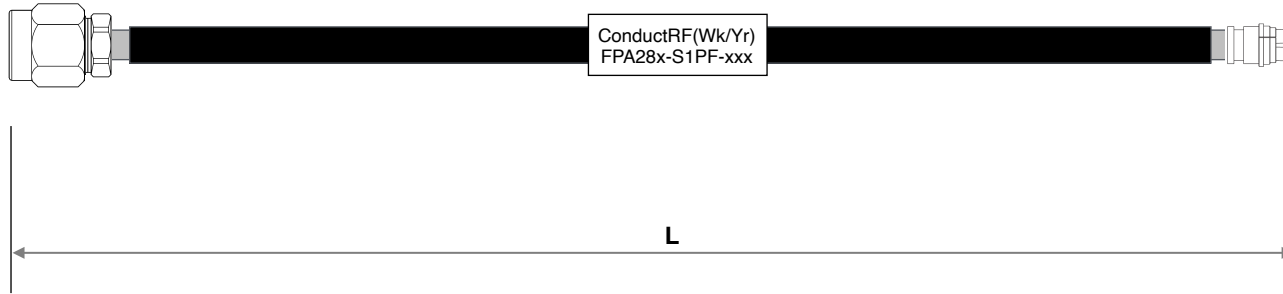


Notes:

1. Only RoHS Compliant Processes and Materials used for this assembly.
2. Marking to Contain "ConductRF", Date Code & Part No., Black Text.
3. Single Centered Marker on Cables of 4" and longer
4. Sweep Tested & Store Hi-Point Data to Ref Frequency



Insertion Loss Max(dB) - Typ.

XXX	L(in.)	6GHz	12GHz	18GHz	27GHz
Part No. Ref>>>		FPA28E	FPA28D	FPA28C	FPA28
S04	4"	0.38	0.55	0.69	0.86
S06	6"	0.48	0.70	0.87	1.09
S08	8"	0.58	0.84	1.05	1.31
S09	9"	0.63	0.91	1.14	1.43
S12	12"	0.77	1.12	1.41	1.77
S16	16"	0.97	1.41	1.77	2.23
S24	24"	1.35	1.98	2.49	3.14
VSWR Typ.		1.35:1		1.45:1	1.55:1

Part No. Configurator - XXX

FXX = Length in Feet (eg F03=3ft)
 SXX = Length in Inches (eg S18=18")
 XMX = Length in Meters (eg 2M5=2.5m)
 CXX = Length in CM (eg C50=50cm)

ITEM	DESCRIPTION	MATERIALS	FINISH
3	Semi-Flex Cable	A28RFJ	Black FEP
2	SMP Str. Female	PPF12A-A28G01	Gold
1	SMA Male	PSM11B-A28G01	Passivated

REV.	DESCRIPTION	ECN	DRAWN	DATE
2	Added Length Options		DG	10/25/19
1	Pre-Release		DG	06/28/18

REVISION HISTORY

Customer DWG		Title: Low Loss 0.086" SMA Male to SMP Female		
Remarks:	Originated:	Conduct RF sales@ConductRF.com Tel: +1 978 374 6840	Range: FPA	Sheet 1 of 1
	06/28/18		Dwg Ref: FPA28-S1PF	
Length Tolerances: ≤24" = ±0.25" >24" = ± 1%	Checked: JW	Approved: PL	Rev: 2	Part No: FPA28x-S1PF-xxx

