

ATLANTIC VERSION TERMINATOR INTERFACE ADAPTER



PART NUMBER	REVISION	DESCRIPTION	FEED TYPE
2151772-1	D	FINE CRIMP HEIGHT ADJUST	MECHANICAL
2151772-2	E	FINE CRIMP HEIGHT ADJUST	PNEUMATIC
7-2151772-1	D	MECHANICAL AND CRIMP TOOLING KIT	MECHANICAL
7-2151772-2	E	PNEUMATIC AND CRIMP TOOLING KIT	PNEUMATIC
7-2151772-7	A	CRIMP TOOLING KIT	-

APPLICATOR DATA		
CRIMP	SIZE	TYPE
WIRE	1.78 mm [.070]	F
INSUL	2.60 mm [.102]	F

APPLICATOR INSTRUCTIONS 408-35042

TERMINAL DATA: TE TERMINAL		TE CRIMP SPECIFICATION	
TERMINAL NAME: CONTACT, LANCELESS, STD, ECONOMY POWER II			
WIRE STRIP LENGTH	INSULATION DIAMETER RANGE		
2.46-2.84 mm [.097-.112 IN]	Ø1.70-2.90 mm [.067-.114 IN]		
TERMINAL APPLICATION SPECIFICATION	114-61072		
TERMINALS APPLIED			
TE TERMINAL	TE TERMINAL	TE TERMINAL	TE TERMINAL
1744201-1			

WIRE SIZE	CRIMP HEIGHT mm [INCH]	CRIMP HEIGHT REFERENCE SETTING
16 AWG	1.47+/-0.05 [.058+/-0.002]	7.0
18 AWG	1.27+/-0.05 [.050+/-0.002]	9.0
20 AWG	1.12+/-0.05 [.044+/-0.002]	10.5

- 1. RECOMMENDED SPARE PARTS
- 2. REFER TO SUPPLIED INSTRUCTION SHEET FOR CLEANING, LUBRICATION AND STORAGE OF APPLICATOR.
- 3. APPLY PART NUMBER 2-23419-6 LOCTITE TO THREADS OF ITEM 242.
- 4. CRIMP HEIGHT REFERENCE SETTING WAS THE SETTING USED WHEN THE APPLICATOR WAS QUALIFIED AT THE FACTORY. ADJUSTMENT MAY BE NECESSARY WHEN RUNNING APPLICATOR IN THE FIELD.
- 5. TERMINAL LUBRICANT IS RECOMMENDED.
- 6. UNLESS SPECIFIED OTHERWISE TORQUE VALUES SHALL BE USED PER DOCUMENT, 101-35000.

***WARNING**
 ON INSTALLATION, SET WIRE DISC TO CRIMP HEIGHT REFERENCE SETTING FOR LARGEST WIRE SIZE. CRIMP HEIGHT REFERENCE SETTINGS GREATER THAN THE VALUE SHOWN MAY CAUSE DAMAGE TO THE CRIMP TOOLING, REFER TO THE INSTRUCTION SHEET FOR PROPER SETUP AND ADJUSTMENTS.

ATLANTIC VERSION
 Shown on sheets 1 of 4 & 2 of 4
 (Pacific version shown on sheets 3 of 4 & 4 of 4)

LOC	DIST	REVISIONS					
		P	LTN	DESCRIPTION	DATE	OWN	APVD
A	66	C		ECR-17-004844	04APR2017	TB	CT
		D		ECR-18-006565	02MAY2018	KH	JDG
		E		ECR-22-126403	12JAN2022	JWC	TE

-	1	-	1	-	2119641-1	FEED CAM, AIR FEED	248	
-	1	1	1	1	2119082-9	CAM, SNAIL, INSULATION ADJUSTMENT	244	
-	1	1	1	1	2079764-1	WASHER, WAVE SPRING, CREST-TO-CREST	243	
-	1	1	1	1	2119083-1	RETAINER, INSULATION DIAL	242	
-	1	1	1	1	7-18023-7	SCR, SKT HD CAP M3 X 4.0	241	
-	-	1	-	1	2119580-1	MECHANICAL FEED ASSEMBLY	239	
-	1	-	1	-	2844940-1	AIR FEED MODULE	238	
-	REF	REF	REF	REF	994970-2	COUNTER, MAGNETIC	164	
-	1	1	1	1	2119955-1	ASSY, LUBRICATOR, SIDE FEED	113	
-	1	1	1	1	2844908-1	SCREW, LOCKING	99	
-	1	1	1	1	2844907-1	POST, LOCKING	98	
-	1	1	1	1	1-455888-1	SPACER, CRIMPER	82	
-	1	1	1	1	22278-8	SPRING, COMPRESSION	77	
-	1	1	1	1	854769-4	HOLDER, INS	74	
-	1	1	1	1	1803607-3	DOCUMENTATION PACKAGE	71	
-	1	1	1	1	2119740-1	TAG, IDENTIFICATION	67	
-	2	2	2	2	2168078-1	SCREW, DRIVE, RH, RoHS, 2 x .188	66	
-	1	1	1	1	2168083-2	SCR, SKT HD CAP, RoHS, M4 X 8.0	60	
-	1	1	1	1	5-18022-5	SCR, HEX HD CAP, M4 X 6.0	59	
-	1	1	1	1	21028-2	PIN, SLOTTED SPRING .062 X .250	58	
-	1	1	1	1	1338685-1	PAWL, FEED	56	
-	4	4	4	4	2168083-3	SCR, SKT HD CAP, RoHS, M4 X 12.0	54	
-	2	2	2	2	2168083-2	SCR, SKT HD CAP, RoHS, M4 X 8.0	53	
-	1	1	1	1	5018030-1	NUT, HEX, REG, RoHS, M3	52	
-	1	1	1	1	811242-5	BUMPER, HOLD DOWN	51	
-	1	1	1	1	690753-6	SPACER, TONKER	50	
-	1	2	1	2	18023-9	SCR, SKT HD CAP M4 X 6.0	49	
-	-	1	-	1	2119652-1	FEED CAM, PRE FEED	48	
-	-	1	-	1	2119653-1	FEED CAM, POST FEED	47	
-	1	1	1	1	1803583-9	APPLICATOR BASIC ASSEMBLY, SF	46	
-	1	1	1	1	1803515-1	RAM ASSEMBLY, SF ATLANTIC	44	
-	1	1	1	1	1803602-1	SCR, BHSC, RoHS (M8 X 25)	41	
-	1	1	1	1	2-1752356-3	SUPPORT, TERMINAL	34	
-	2	2	2	2	2079383-5	SCR, BHSC, RoHS (M4 X 20)	33	
-	2	2	2	2	2-2844962-4	SPACER, CYLINDRICAL, STRIP GUIDE	30	
-	1	1	1	1	2844992-1	ASSEMBLY, STRIP GUIDE	29	
-	1	1	1	1	455888-4	SPACER, CRIMPER	28	
-	1	1	1	1	1320928-2	STRIP GUIDE	24	
-	1	1	1	1	2168083-2	SCR, SKT HD CAP, RoHS, M4 X 8.0	21	
-	2	2	2	2	1-18028-2	WASHER, FLAT, REG M4	20	
-	1	1	1	1	2119533-1	STRIPPER, SIDE FEED	19	
-	1	1	1	1	2119806-1	INSERT, SHEAR	13	
-	1	1	1	1	3-22280-3	SPRING, COMPRESSION	12	
-	1	1	1	1	1-356885-4	STOP, SHEAR	11	
-	1	1	1	1	2119805-1	SHEAR HOLDER, FRONT	10	
-	1	1	1	1	1803095-1	FLOATING SHEAR, FRONT	9	
-	1	2	2	1	1633919-7	ANVIL, COMBINATION	8	
-	-	-	-	-	-	-	7	
-	-	-	-	-	-	-	6	
-	1	1	1	1	1-2119780-4	DEPRESSOR, SHEAR	5	
-	1	1	1	1	1-238011-7	BLOCK, CRIMPER SPACER	4	
-	1	2	2	1	1633962-5	CRIMPER, INSULATION F PREMIUM	3	
-	-	-	-	-	-	-	2	
-	1	2	2	1	4-456404-6	CRIMPER, WIRE PREMIUM	1	
-	77	72	72	2	-1	PART NO	DESCRIPTION	ITEM NO

DIMENSIONS:		TOLERANCES UNLESS OTHERWISE SPECIFIED:		MATERIAL:		FINISH:		WEIGHT:		SCALE:		SHEET:		REV:	
mm	0 PLC ±	1 PLC ±	2 PLC ±	3 PLC ±	4 PLC ±	ANGLES	FINISH			A	1:2	1	OF	4	E

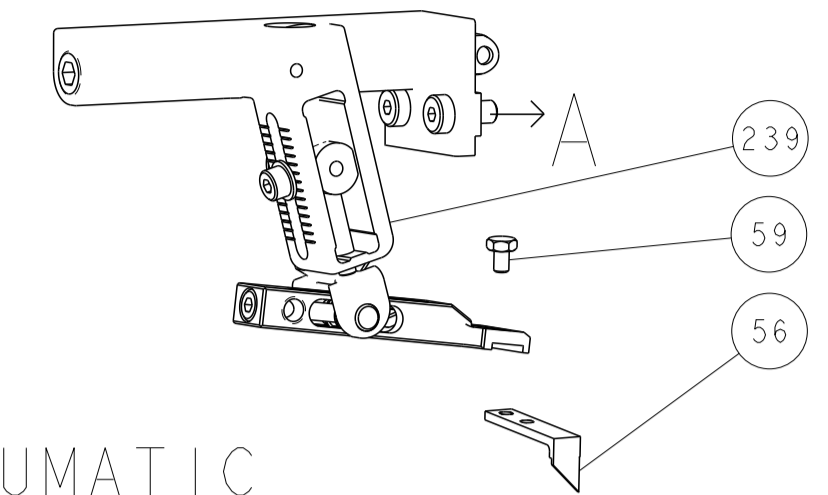


Ocean Side Feed Applicator

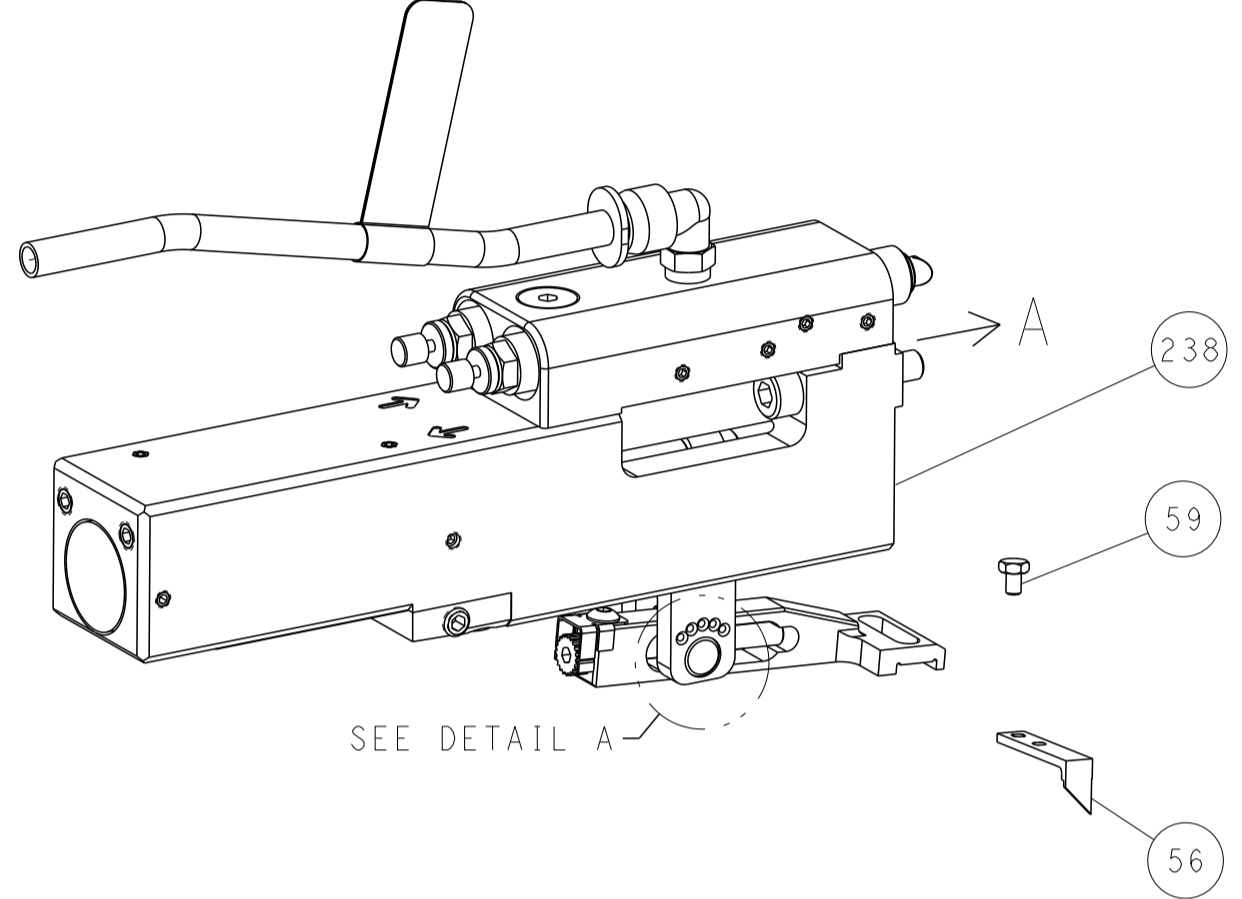
Customer Accessible Production Drawing

LOC		DIST		REVISIONS			
A		66		REV	DATE	BY	APPD
-				SEE SHEET 1	-	-	-

FEED TYPE MECHANICAL



PNEUMATIC

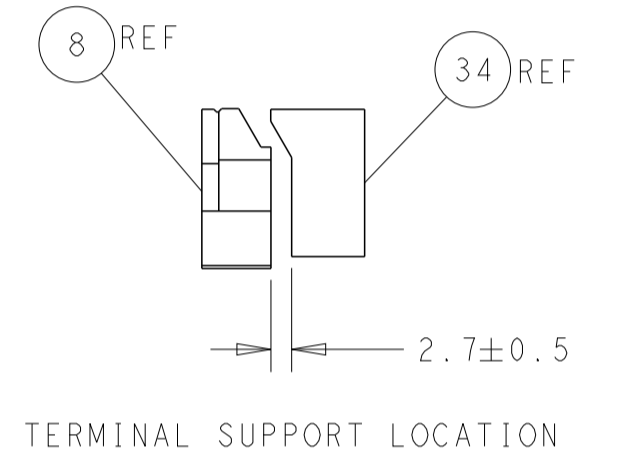
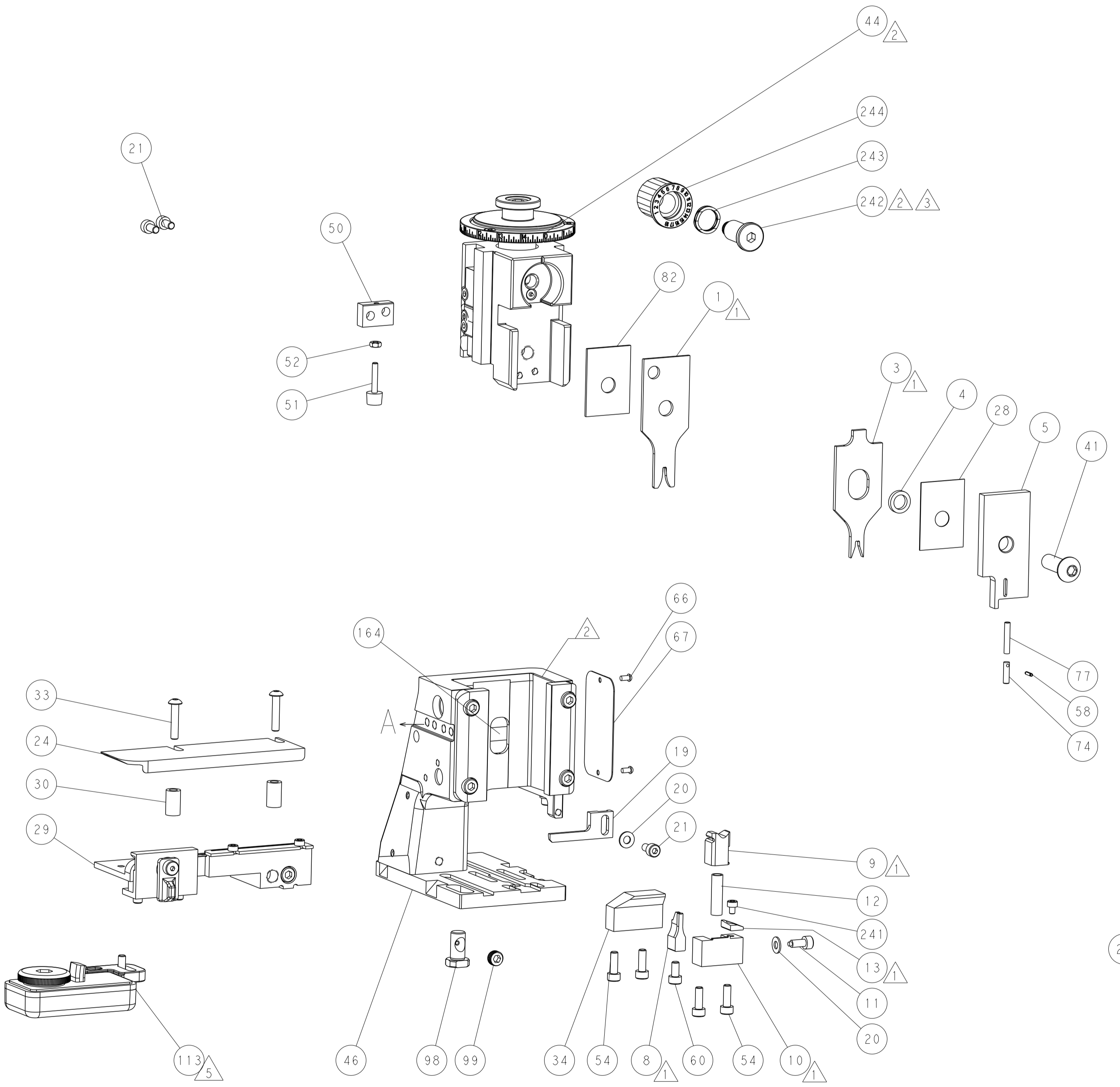
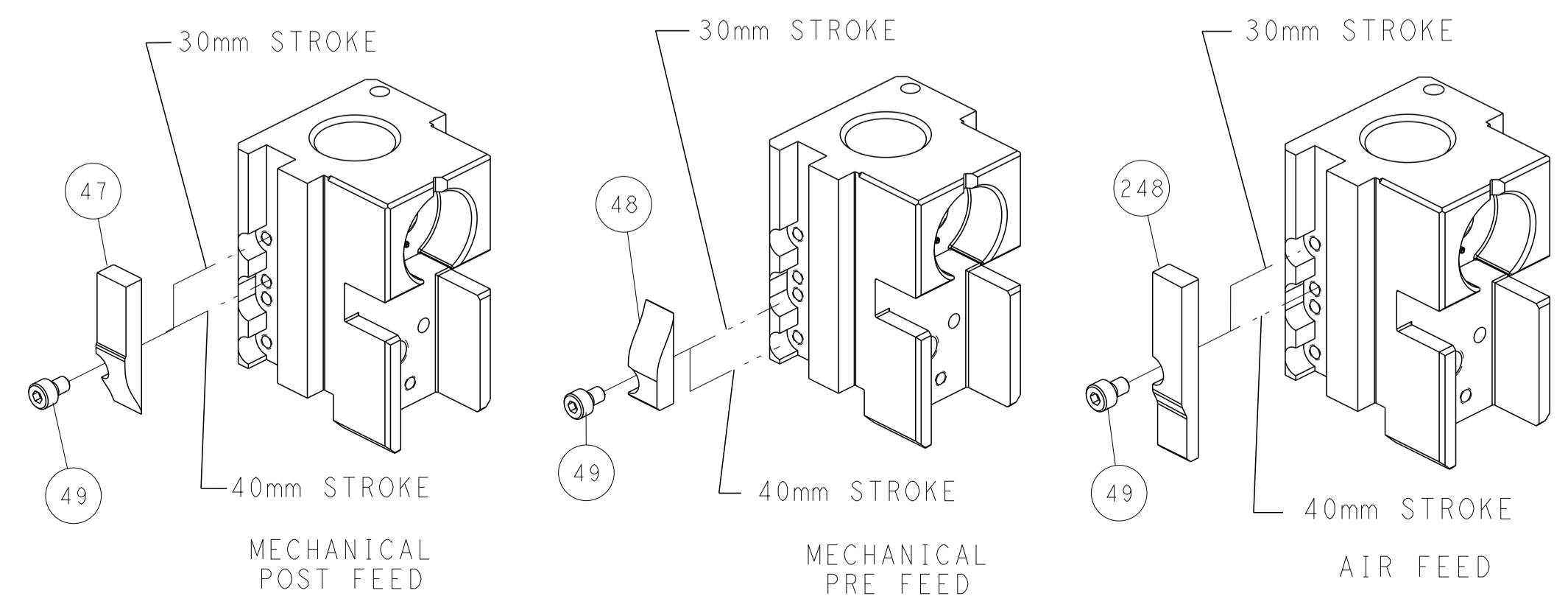


FEED SPRING SETTING POSITION (SHOWN FROM REAR SIDE)

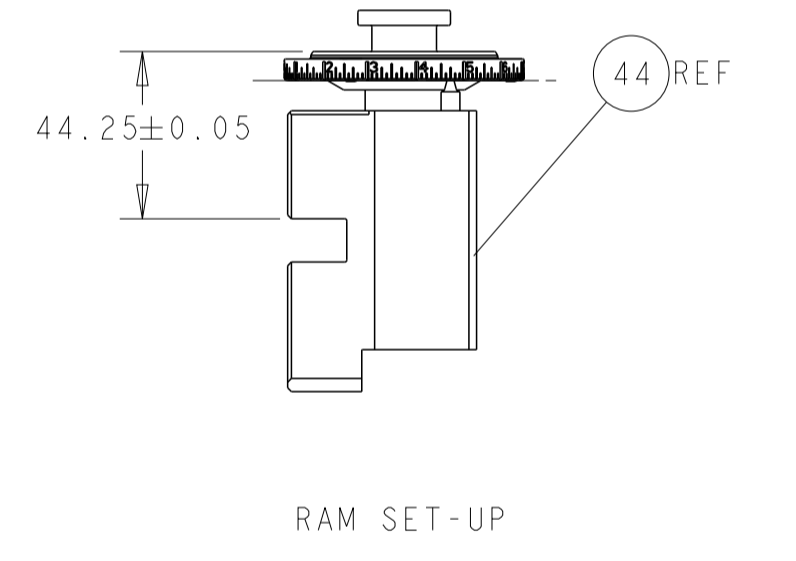


DETAIL A

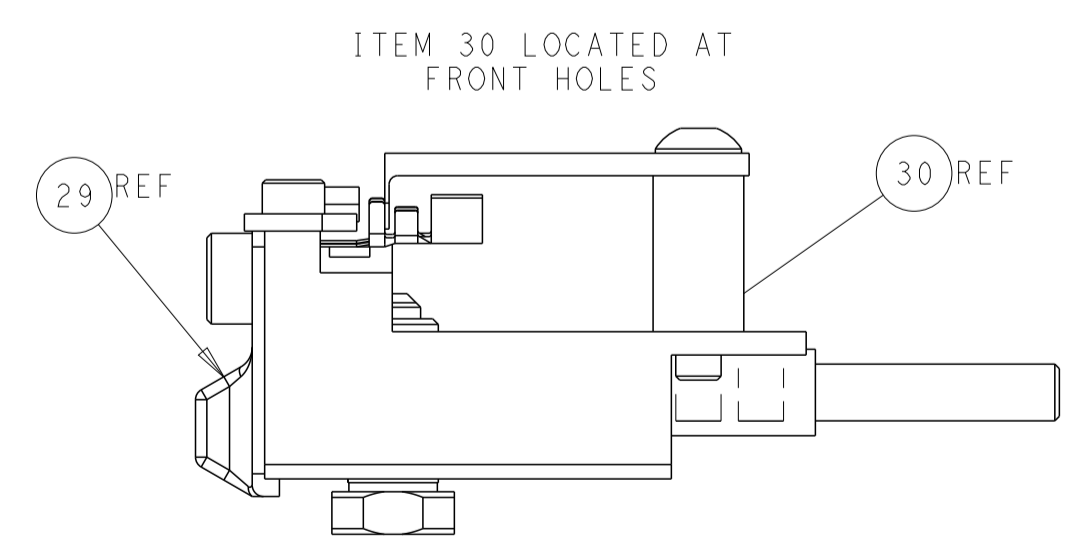
CAM POSITIONS



TERMINAL SUPPORT LOCATION



RAM SET-UP



FEED TRACK POSITION GUIDE BY INS BARREL

ATLANTIC VERSION
 Shown on sheets 1 of 4 & 2 of 4
 (Pacific version shown on sheets 3 of 4 & 4 of 4)

DIMENSIONS:		TOLERANCES UNLESS OTHERWISE SPECIFIED:		DWN L. ZHANG 25SEP2012		TE Connectivity	
mm		0 PLC ±		CHK L. ZHANG 25SEP2012		Harrisburg, PA 17105-3608	
Ø		1 PLC ±		S. XI 25SEP2012		NAME	
H		2 PLC ±		PRODUCT SPEC		Ocean Side Feed	
L		3 PLC ±		APPLICATION SPEC		Applicator	
R		4 PLC ±		SIZE		CAGE CODE DRAWING NO	
S		5 PLC ±		A1 00779		©=2151772	
T		6 PLC ±		WEIGHT		RESTRICTED TO	
Ø		7 PLC ±		Customer Accessible Production Drawing		SCALE 1:2 SHEET 2 OF 4 REV E	
H		8 PLC ±		SCALE		SHEETS 3 & 4 ARE NOT REQUIRED FOR ATLANTIC VERSION	
L		9 PLC ±		SCALE		SHEETS 3 & 4 ARE NOT REQUIRED FOR ATLANTIC VERSION	
R		10 PLC ±		SCALE		SHEETS 3 & 4 ARE NOT REQUIRED FOR ATLANTIC VERSION	
S		11 PLC ±		SCALE		SHEETS 3 & 4 ARE NOT REQUIRED FOR ATLANTIC VERSION	
T		12 PLC ±		SCALE		SHEETS 3 & 4 ARE NOT REQUIRED FOR ATLANTIC VERSION	
Ø		13 PLC ±		SCALE		SHEETS 3 & 4 ARE NOT REQUIRED FOR ATLANTIC VERSION	
H		14 PLC ±		SCALE		SHEETS 3 & 4 ARE NOT REQUIRED FOR ATLANTIC VERSION	
L		15 PLC ±		SCALE		SHEETS 3 & 4 ARE NOT REQUIRED FOR ATLANTIC VERSION	
R		16 PLC ±		SCALE		SHEETS 3 & 4 ARE NOT REQUIRED FOR ATLANTIC VERSION	
S		17 PLC ±		SCALE		SHEETS 3 & 4 ARE NOT REQUIRED FOR ATLANTIC VERSION	
T		18 PLC ±		SCALE		SHEETS 3 & 4 ARE NOT REQUIRED FOR ATLANTIC VERSION	
Ø		19 PLC ±		SCALE		SHEETS 3 & 4 ARE NOT REQUIRED FOR ATLANTIC VERSION	
H		20 PLC ±		SCALE		SHEETS 3 & 4 ARE NOT REQUIRED FOR ATLANTIC VERSION	
L		21 PLC ±		SCALE		SHEETS 3 & 4 ARE NOT REQUIRED FOR ATLANTIC VERSION	
R		22 PLC ±		SCALE		SHEETS 3 & 4 ARE NOT REQUIRED FOR ATLANTIC VERSION	
S		23 PLC ±		SCALE		SHEETS 3 & 4 ARE NOT REQUIRED FOR ATLANTIC VERSION	
T		24 PLC ±		SCALE		SHEETS 3 & 4 ARE NOT REQUIRED FOR ATLANTIC VERSION	
Ø		25 PLC ±		SCALE		SHEETS 3 & 4 ARE NOT REQUIRED FOR ATLANTIC VERSION	
H		26 PLC ±		SCALE		SHEETS 3 & 4 ARE NOT REQUIRED FOR ATLANTIC VERSION	
L		27 PLC ±		SCALE		SHEETS 3 & 4 ARE NOT REQUIRED FOR ATLANTIC VERSION	
R		28 PLC ±		SCALE		SHEETS 3 & 4 ARE NOT REQUIRED FOR ATLANTIC VERSION	
S		29 PLC ±		SCALE		SHEETS 3 & 4 ARE NOT REQUIRED FOR ATLANTIC VERSION	
T		30 PLC ±		SCALE		SHEETS 3 & 4 ARE NOT REQUIRED FOR ATLANTIC VERSION	
Ø		31 PLC ±		SCALE		SHEETS 3 & 4 ARE NOT REQUIRED FOR ATLANTIC VERSION	
H		32 PLC ±		SCALE		SHEETS 3 & 4 ARE NOT REQUIRED FOR ATLANTIC VERSION	
L		33 PLC ±		SCALE		SHEETS 3 & 4 ARE NOT REQUIRED FOR ATLANTIC VERSION	
R		34 PLC ±		SCALE		SHEETS 3 & 4 ARE NOT REQUIRED FOR ATLANTIC VERSION	
S		35 PLC ±		SCALE		SHEETS 3 & 4 ARE NOT REQUIRED FOR ATLANTIC VERSION	
T		36 PLC ±		SCALE		SHEETS 3 & 4 ARE NOT REQUIRED FOR ATLANTIC VERSION	
Ø		37 PLC ±		SCALE		SHEETS 3 & 4 ARE NOT REQUIRED FOR ATLANTIC VERSION	
H		38 PLC ±		SCALE		SHEETS 3 & 4 ARE NOT REQUIRED FOR ATLANTIC VERSION	
L		39 PLC ±		SCALE		SHEETS 3 & 4 ARE NOT REQUIRED FOR ATLANTIC VERSION	
R		40 PLC ±		SCALE		SHEETS 3 & 4 ARE NOT REQUIRED FOR ATLANTIC VERSION	
S		41 PLC ±		SCALE		SHEETS 3 & 4 ARE NOT REQUIRED FOR ATLANTIC VERSION	
T		42 PLC ±		SCALE		SHEETS 3 & 4 ARE NOT REQUIRED FOR ATLANTIC VERSION	
Ø		43 PLC ±		SCALE		SHEETS 3 & 4 ARE NOT REQUIRED FOR ATLANTIC VERSION	
H		44 PLC ±		SCALE		SHEETS 3 & 4 ARE NOT REQUIRED FOR ATLANTIC VERSION	
L		45 PLC ±		SCALE		SHEETS 3 & 4 ARE NOT REQUIRED FOR ATLANTIC VERSION	
R		46 PLC ±		SCALE		SHEETS 3 & 4 ARE NOT REQUIRED FOR ATLANTIC VERSION	
S		47 PLC ±		SCALE		SHEETS 3 & 4 ARE NOT REQUIRED FOR ATLANTIC VERSION	
T		48 PLC ±		SCALE		SHEETS 3 & 4 ARE NOT REQUIRED FOR ATLANTIC VERSION	
Ø		49 PLC ±		SCALE		SHEETS 3 & 4 ARE NOT REQUIRED FOR ATLANTIC VERSION	
H		50 PLC ±		SCALE		SHEETS 3 & 4 ARE NOT REQUIRED FOR ATLANTIC VERSION	
L		51 PLC ±		SCALE		SHEETS 3 & 4 ARE NOT REQUIRED FOR ATLANTIC VERSION	
R		52 PLC ±		SCALE		SHEETS 3 & 4 ARE NOT REQUIRED FOR ATLANTIC VERSION	
S		53 PLC ±		SCALE		SHEETS 3 & 4 ARE NOT REQUIRED FOR ATLANTIC VERSION	
T		54 PLC ±		SCALE		SHEETS 3 & 4 ARE NOT REQUIRED FOR ATLANTIC VERSION	
Ø		55 PLC ±		SCALE		SHEETS 3 & 4 ARE NOT REQUIRED FOR ATLANTIC VERSION	
H		56 PLC ±		SCALE		SHEETS 3 & 4 ARE NOT REQUIRED FOR ATLANTIC VERSION	
L		57 PLC ±		SCALE		SHEETS 3 & 4 ARE NOT REQUIRED FOR ATLANTIC VERSION	
R		58 PLC ±		SCALE		SHEETS 3 & 4 ARE NOT REQUIRED FOR ATLANTIC VERSION	
S		59 PLC ±		SCALE		SHEETS 3 & 4 ARE NOT REQUIRED FOR ATLANTIC VERSION	
T		60 PLC ±		SCALE		SHEETS 3 & 4 ARE NOT REQUIRED FOR ATLANTIC VERSION	
Ø		61 PLC ±		SCALE		SHEETS 3 & 4 ARE NOT REQUIRED FOR ATLANTIC VERSION	
H		62 PLC ±		SCALE		SHEETS 3 & 4 ARE NOT REQUIRED FOR ATLANTIC VERSION	
L		63 PLC ±		SCALE		SHEETS 3 & 4 ARE NOT REQUIRED FOR ATLANTIC VERSION	
R		64 PLC ±		SCALE		SHEETS 3 & 4 ARE NOT REQUIRED FOR ATLANTIC VERSION	
S		65 PLC ±		SCALE		SHEETS 3 & 4 ARE NOT REQUIRED FOR ATLANTIC VERSION	
T		66 PLC ±		SCALE		SHEETS 3 & 4 ARE NOT REQUIRED FOR ATLANTIC VERSION	
Ø		67 PLC ±		SCALE		SHEETS 3 & 4 ARE NOT REQUIRED FOR ATLANTIC VERSION	
H		68 PLC ±		SCALE		SHEETS 3 & 4 ARE NOT REQUIRED FOR ATLANTIC VERSION	
L		69 PLC ±		SCALE		SHEETS 3 & 4 ARE NOT REQUIRED FOR ATLANTIC VERSION	
R		70 PLC ±		SCALE		SHEETS 3 & 4 ARE NOT REQUIRED FOR ATLANTIC VERSION	
S		71 PLC ±		SCALE		SHEETS 3 & 4 ARE NOT REQUIRED FOR ATLANTIC VERSION	
T		72 PLC ±		SCALE		SHEETS 3 & 4 ARE NOT REQUIRED FOR ATLANTIC VERSION	
Ø		73 PLC ±		SCALE		SHEETS 3 & 4 ARE NOT REQUIRED FOR ATLANTIC VERSION	
H		74 PLC ±		SCALE		SHEETS 3 & 4 ARE NOT REQUIRED FOR ATLANTIC VERSION	
L		75 PLC ±		SCALE		SHEETS 3 & 4 ARE NOT REQUIRED FOR ATLANTIC VERSION	
R		76 PLC ±		SCALE		SHEETS 3 & 4 ARE NOT REQUIRED FOR ATLANTIC VERSION	
S		77 PLC ±		SCALE		SHEETS 3 & 4 ARE NOT REQUIRED FOR ATLANTIC VERSION	
T		78 PLC ±		SCALE		SHEETS 3 & 4 ARE NOT REQUIRED FOR ATLANTIC VERSION	
Ø		79 PLC ±		SCALE		SHEETS 3 & 4 ARE NOT REQUIRED FOR ATLANTIC VERSION	
H		80 PLC ±		SCALE		SHEETS 3 & 4 ARE NOT REQUIRED FOR ATLANTIC VERSION	
L		81 PLC ±		SCALE		SHEETS 3 & 4 ARE NOT REQUIRED FOR ATLANTIC VERSION	
R		82 PLC ±		SCALE		SHEETS 3 & 4 ARE NOT REQUIRED FOR ATLANTIC VERSION	
S		83 PLC ±		SCALE		SHEETS 3 & 4 ARE NOT REQUIRED FOR ATLANTIC VERSION	
T		84 PLC ±		SCALE		SHEETS 3 & 4 ARE NOT REQUIRED FOR ATLANTIC VERSION	
Ø		85 PLC ±		SCALE		SHEETS 3 & 4 ARE NOT REQUIRED FOR ATLANTIC VERSION	
H		86 PLC ±		SCALE		SHEETS 3 & 4 ARE NOT REQUIRED FOR ATLANTIC VERSION	
L		87 PLC ±		SCALE		SHEETS 3 & 4 ARE NOT REQUIRED FOR ATLANTIC VERSION	
R		88 PLC ±		SCALE		SHEETS 3 & 4 ARE NOT REQUIRED FOR ATLANTIC VERSION	
S		89 PLC ±		SCALE		SHEETS 3 & 4 ARE NOT REQUIRED FOR ATLANTIC VERSION	
T		90 PLC ±		SCALE		SHEETS 3 & 4 ARE NOT REQUIRED FOR ATLANTIC VERSION	
Ø		91 PLC ±		SCALE		SHEETS 3 & 4 ARE NOT REQUIRED FOR ATLANTIC VERSION	
H		92 PLC ±		SCALE		SHEETS 3 & 4 ARE NOT REQUIRED FOR ATLANTIC VERSION	
L		93 PLC ±		SCALE		SHEETS 3 & 4 ARE NOT REQUIRED FOR ATLANTIC VERSION	
R		94 PLC ±		SCALE		SHEETS 3 & 4 ARE NOT REQUIRED FOR ATLANTIC VERSION	
S		95 PLC ±		SCALE		SHEETS 3 & 4 ARE NOT REQUIRED FOR ATLANTIC VERSION	
T		96 PLC ±		SCALE		SHEETS 3 & 4 ARE NOT REQUIRED FOR ATLANTIC VERSION	
Ø		97 PLC ±		SCALE		SHEETS 3 & 4 ARE NOT REQUIRED FOR ATLANTIC VERSION	
H		98 PLC ±		SCALE		SHEETS 3 & 4 ARE NOT REQUIRED FOR ATLANTIC VERSION	
L		99 PLC ±		SCALE		SHEETS 3 & 4 ARE NOT REQUIRED FOR ATLANTIC VERSION	
R		100 PLC ±		SCALE		SHEETS 3 & 4 ARE NOT REQUIRED FOR ATLANTIC VERSION	

THIS DRAWING IS UNPUBLISHED.	RELEASED FOR PUBLICATION		
COPYRIGHT 20 BY TYCO ELECTRONICS CORPORATION. ALL RIGHTS RESERVED.			
PART NUMBER	REVISION	DESCRIPTION	FEED TYPE
2-2151772-1	D	FINE CRIMP HEIGHT ADJUST	MECHANICAL
2-2151772-2	E	FINE CRIMP HEIGHT ADJUST	PNEUMATIC
7-2151772-7	A	CRIMP TOOLING KIT	-

PACIFIC VERSION TERMINATOR
INTERFACE ADAPTER



APPLICATOR DATA		
CRIMP	SIZE	TYPE
WIRE	1.78 mm [.070]	F
INSUL	2.60 mm [.102]	F
APPLICATOR INSTRUCTIONS 408-35042		

TERMINAL DATA: TE TERMINAL		TE CRIMP SPECIFICATION
TERMINAL NAME: CONTACT, LANCELESS, STD, ECONOMY POWER II		
WIRE STRIP LENGTH		INSULATION DIAMETER RANGE
2.46-2.84 mm [.097-.112 IN]		Ø1.70-2.90 mm [.067-.114 IN]
TERMINAL APPLICATION SPECIFICATION	114-61072	
TERMINALS APPLIED		
TE TERMINAL	TE TERMINAL	TE TERMINAL
1744201-1		

WIRE SIZE	CRIMP HEIGHT mm [INCH]	CRIMP HEIGHT REFERENCE SETTING
16 AWG	1.47+/-0.05 [.058+/-0.002]	7.0
18 AWG	1.27+/-0.05 [.050+/-0.002]	9.0
20 AWG	1.12+/-0.05 [.044+/-0.002]	10.5



- 1 RECOMMENDED SPARE PARTS
 - 2 REFER TO SUPPLIED INSTRUCTION SHEET FOR CLEANING, LUBRICATION AND STORAGE OF APPLICATOR.
 - 3 APPLY PART NUMBER 2-23419-6 LOCTITE TO THREADS OF ITEM 242.
 - 4 CRIMP HEIGHT REFERENCE SETTING WAS THE SETTING USED WHEN THE APPLICATOR WAS QUALIFIED AT THE FACTORY. ADJUSTMENT MAY BE NECESSARY WHEN RUNNING APPLICATOR IN THE FIELD.
 - 5 TERMINAL LUBRICANT IS RECOMMENDED.
6. UNLESS SPECIFIED OTHERWISE TORQUE VALUES SHALL BE USED PER DOCUMENT, 101-35000.

***WARNING**
ON INSTALLATION, SET WIRE DISC TO CRIMP HEIGHT REFERENCE SETTING FOR LARGEST WIRE SIZE. CRIMP HEIGHT REFERENCE SETTINGS GREATER THAN THE VALUE SHOWN MAY CAUSE DAMAGE TO THE CRIMP TOOLING, REFER TO THE INSTRUCTION SHEET FOR PROPER SETUP AND ADJUSTMENTS.

PACIFIC VERSION
Shown on sheets 3 of 4 & 4 of 4
(Atlantic version shown on sheets 1 of 4 & 2 of 4)

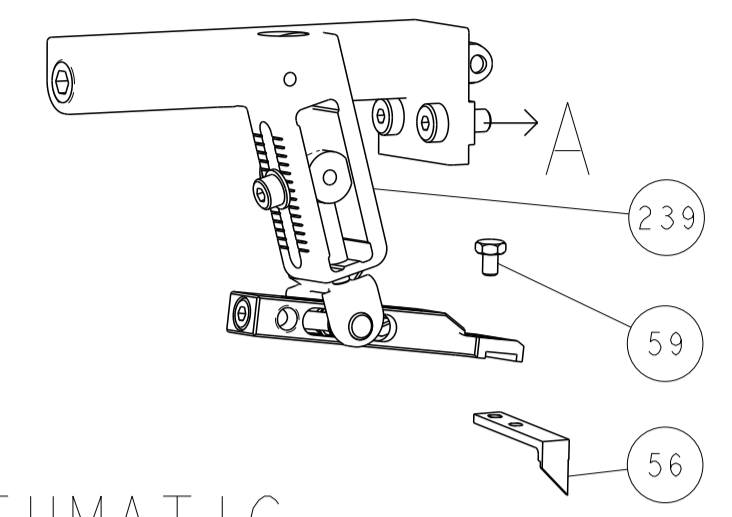
LOC	DIST	REVISIONS					
A	66	P	LTN	DESCRIPTION	DATE	OWN	APVD
		-		SEE SHEET 1			

-	1	1	2119082-9	CAM, SNAIL, INSULATION ADJUSTMENT	244	
-	1	1	2079764-1	WASHER, WAVE SPRING, CREST-TO-CREST	243	
3	-	1	1	2119083-1	RETAINER, INSULATION DIAL	242
-	1	1	7-18023-7	SCR, SKT HD CAP M3 X 4.0	241	
-	-	1	2119580-1	MECHANICAL FEED ASSEMBLY	239	
-	1	-	2844940-1	AIR FEED MODULE	238	
-	REF	REF	994970-2	COUNTER, MAGNETIC	164	
-	1	-	2119641-2	FEED CAM, AIR FEED	151	
-	1	1	2168083-8	SCR, SKT HD CAP, RoHS, M4 X 16	144	
-	4	4	2168083-9	SCR, SKT HD CAP, RoHS, M4 X 20	143	
-	-	1	2119653-2	FEED CAM, POST FEED	142	
-	1	1	1-1803583-0	APPLICATOR BASIC ASSEMBLY, SF	141	
-	1	1	1803516-1	RAM ASSEMBLY, SF PACIFIC	140	
5	-	1	1	2119955-1	ASSY, LUBRICATOR, SIDE FEED	113
-	1	1	2844908-1	SCREW, LOCKING	99	
-	1	1	2844907-1	POST, LOCKING	98	
-	1	1	1-455888-1	SPACER, CRIMPER	82	
-	1	1	22278-8	SPRING, COMPRESSION	77	
-	1	1	854769-4	HOLDER, INS	74	
-	1	1	1803607-3	DOCUMENTATION PACKAGE	71	
-	1	1	2119740-1	TAG, IDENTIFICATION	67	
-	2	2	2168078-1	SCREW, DRIVE, RH, RoHS, 2 x .188	66	
-	1	1	5-18022-5	SCR, HEX HD CAP, M4 X 6.0	59	
-	1	1	21028-2	PIN, SLOTTED SPRING .062 X .250	58	
-	1	1	1338685-1	PAWL, FEED	56	
-	2	2	2168083-2	SCR, SKT HD CAP, RoHS, M4 X 8.0	53	
-	1	1	5018030-1	NUT, HEX, REG, RoHS, M3	52	
-	1	1	811242-5	BUMPER, HOLD DOWN	51	
-	1	1	690753-6	SPACER, TONKER	50	
-	1	2	18023-9	SCR, SKT HD CAP M4 X 6.0	49	
-	-	1	2119652-1	FEED CAM, PRE FEED	48	
-	1	1	1803602-1	SCR, BHSC, RoHS (M8 X 25)	41	
-	1	1	2-1752356-3	SUPPORT, TERMINAL	34	
-	2	2	2079383-5	SCR, BHSC, RoHS (M4 X 20)	33	
-	2	2	2-2844962-4	SPACER, CYLINDRICAL, STRIP GUIDE	30	
-	1	1	2844992-1	ASSEMBLY, STRIP GUIDE	29	
-	1	1	455888-4	SPACER, CRIMPER	28	
-	1	1	1320928-2	STRIP GUIDE	24	
-	1	1	2168083-2	SCR, SKT HD CAP, RoHS, M4 X 8.0	21	
-	2	2	1-18028-2	WASHER, FLAT, REG M4	20	
-	1	1	2119533-1	STRIPPER, SIDE FEED	19	
1	-	1	1	2119806-1	INSERT, SHEAR	13
-	1	1	3-22280-3	SPRING, COMPRESSION	12	
-	1	1	1-356885-4	STOP, SHEAR	11	
1	-	1	1	2119805-1	SHEAR HOLDER, FRONT	10
1	-	1	1	1803095-1	FLOATING SHEAR, FRONT	9
1	1	1	1	1633919-7	ANVIL, COMBINATION	8
-	-	-	-	-	7	
-	-	-	-	-	6	
-	1	1	1-2119780-4	DEPRESSOR, SHEAR	5	
-	1	1	1-238011-7	BLOCK, CRIMPER SPACER	4	
1	1	1	1	1633962-5	CRIMPER, INSULATION F PREMIUM	3
-	-	-	-	-	2	
1	1	1	1	4-456404-6	CRIMPER, WIRE PREMIUM	1
-77	-22	-21	PART NO	DESCRIPTION	ITEM NO	

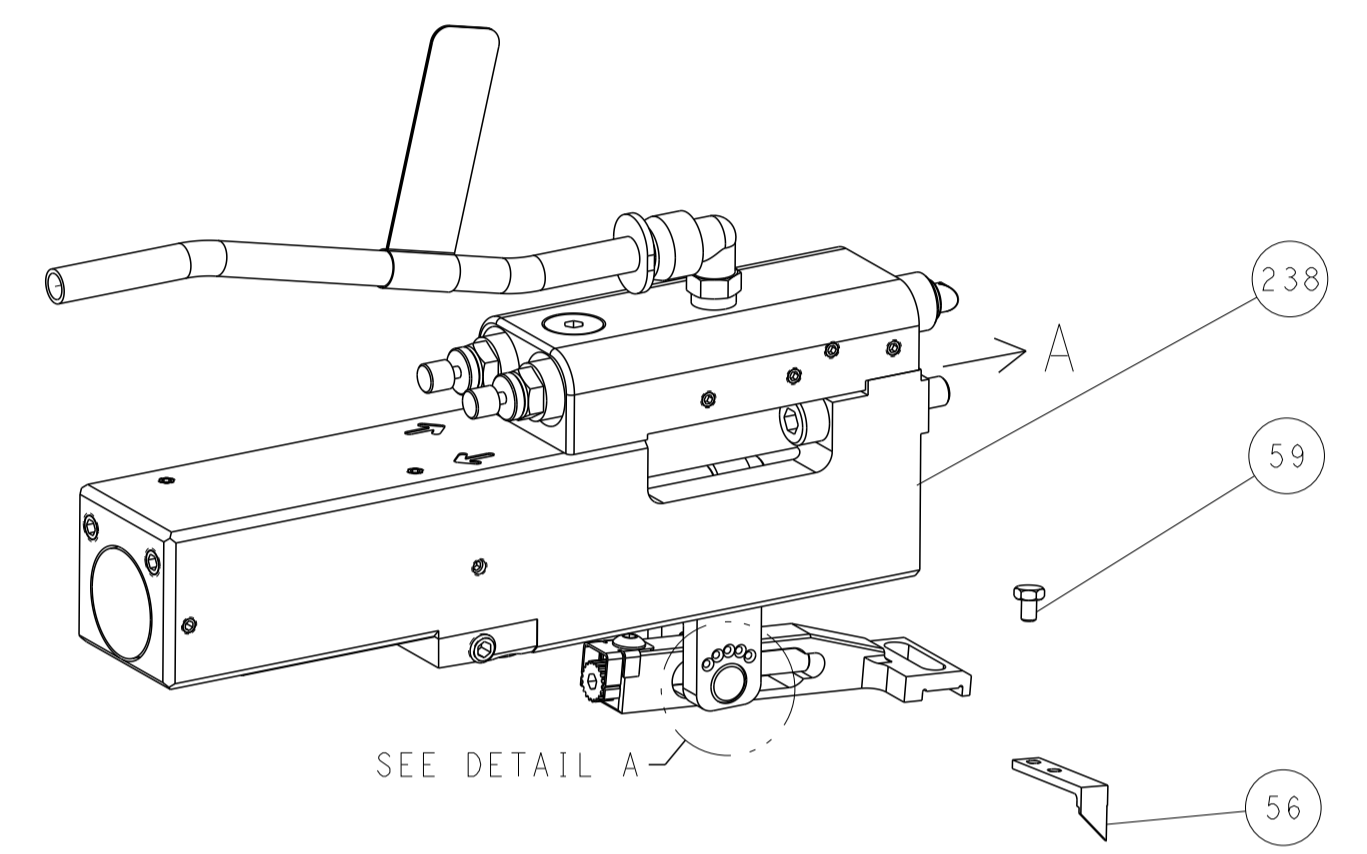
DIMENSIONS:		TOLERANCES UNLESS OTHERWISE SPECIFIED:		DWG		REV	
mm	0 PLC ±	1 PLC ±	2 PLC ±	3 PLC ±	4 PLC ±	5 PLC ±	6 PLC ±
MATERIAL		FINISH		WEIGHT		SCALE	
				A1 00779		C=2151772	
Customer Accessible Production Drawing				Customer Accessible Production Drawing			

LOC		DIST		REVISIONS			
A	66	P	LTM	DESCRIPTION	DATE	DWN	APVD
		-		SEE SHEET 1			

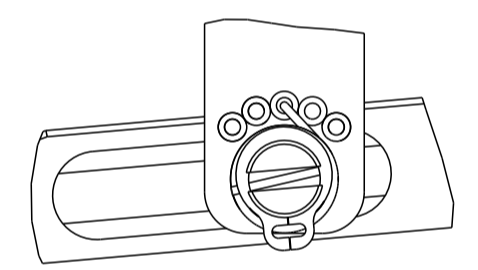
FEED TYPE MECHANICAL



PNEUMATIC

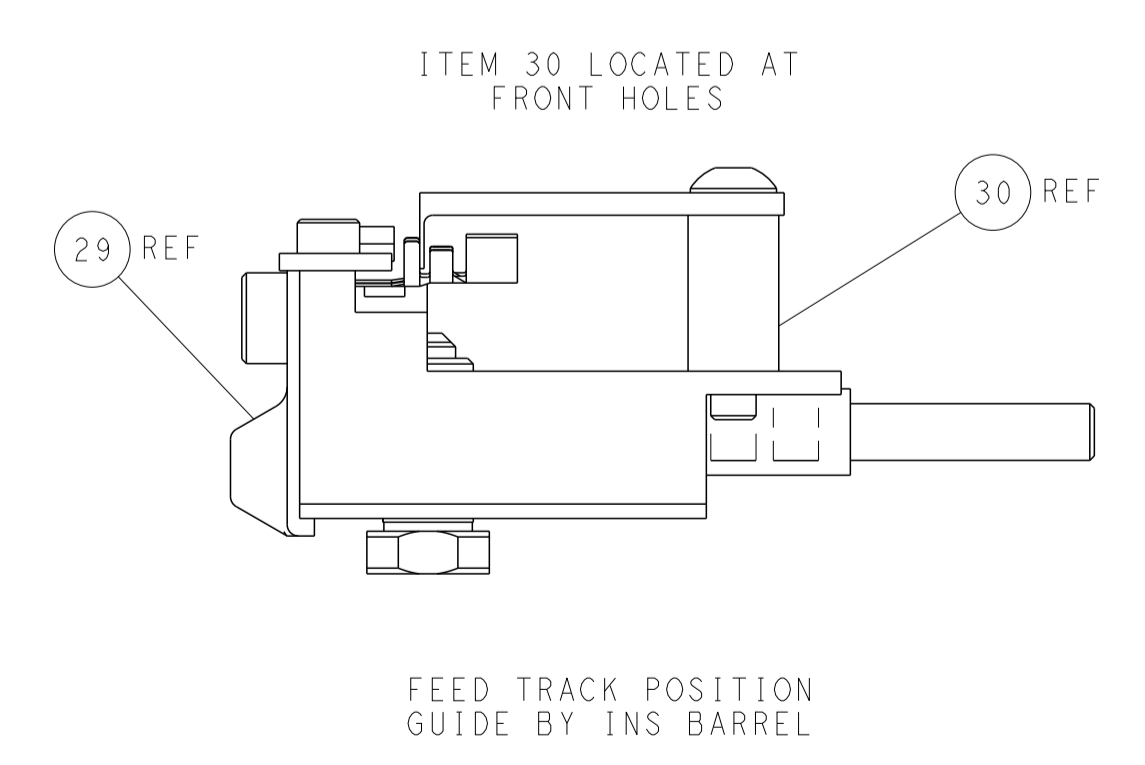
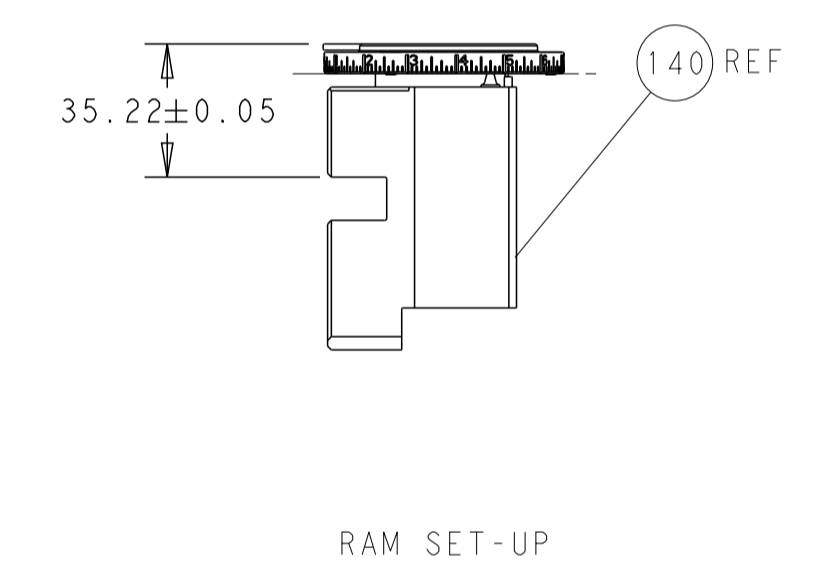
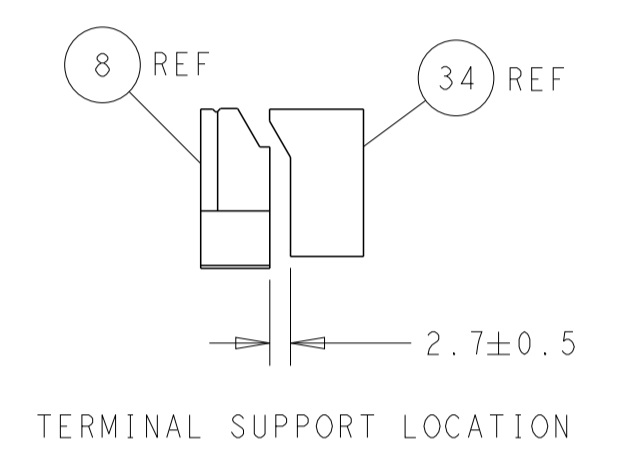
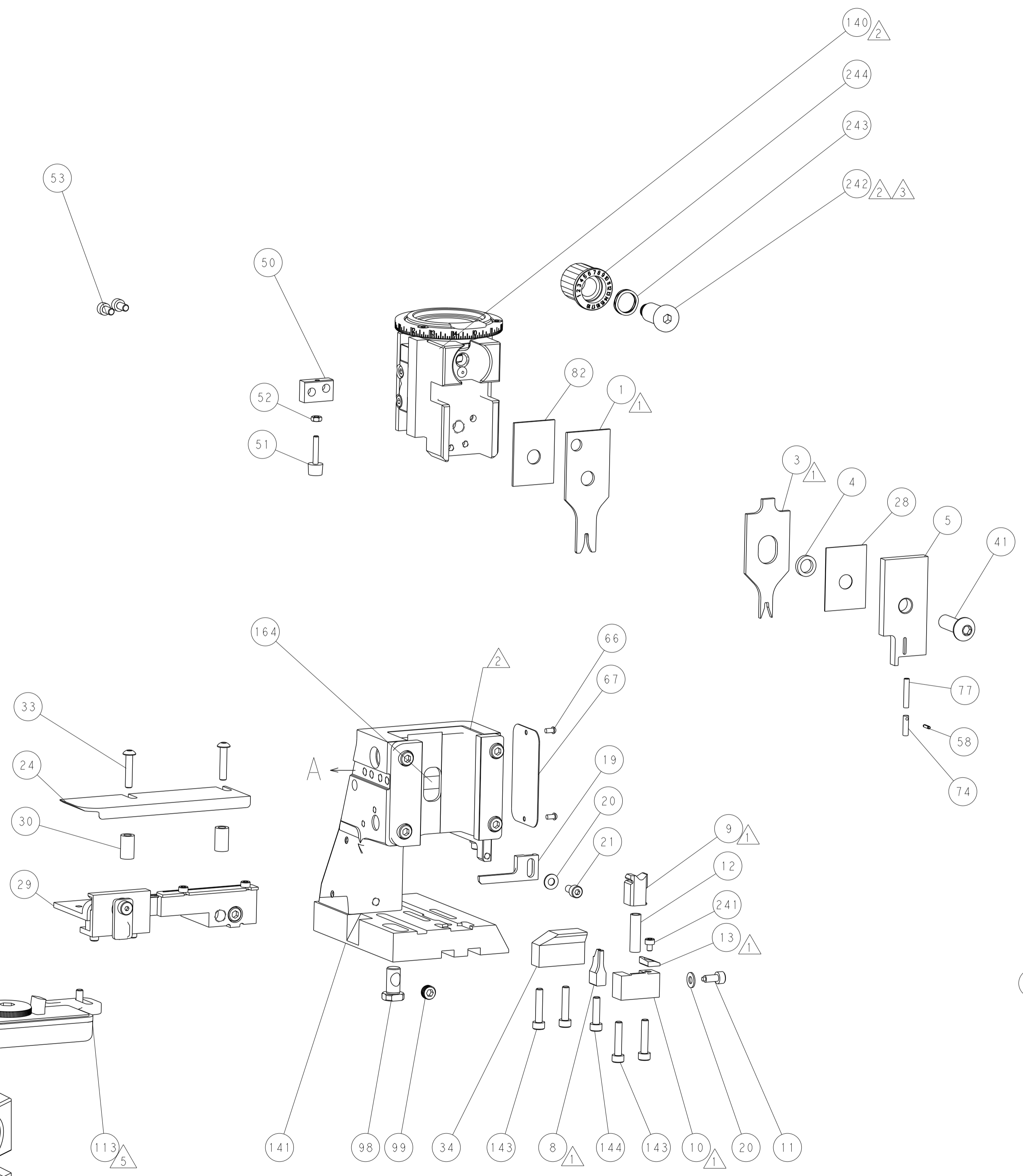
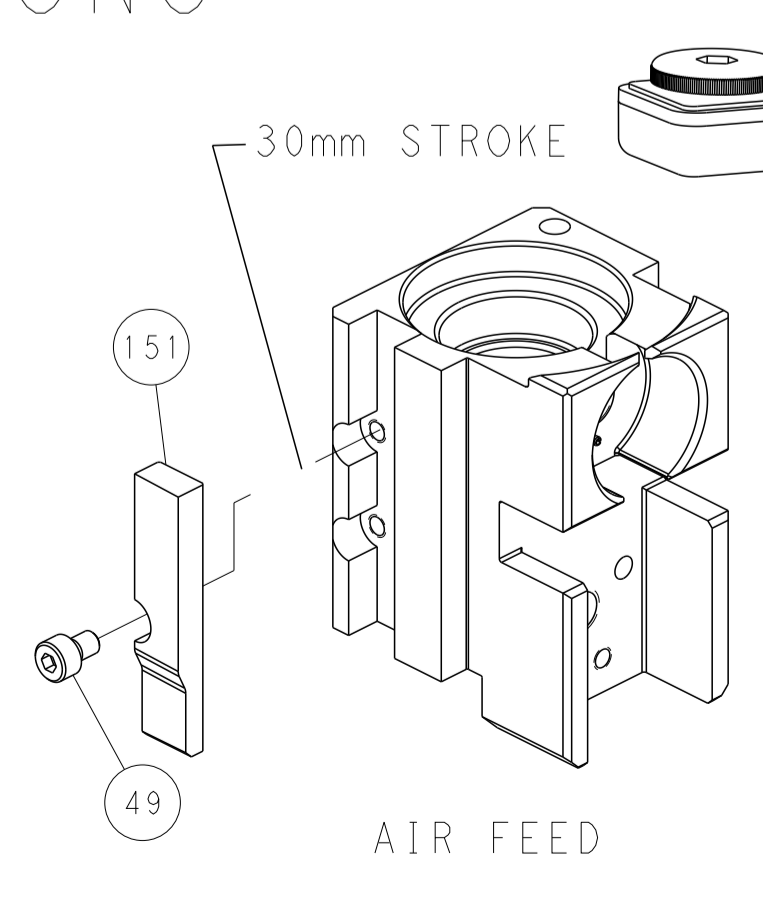
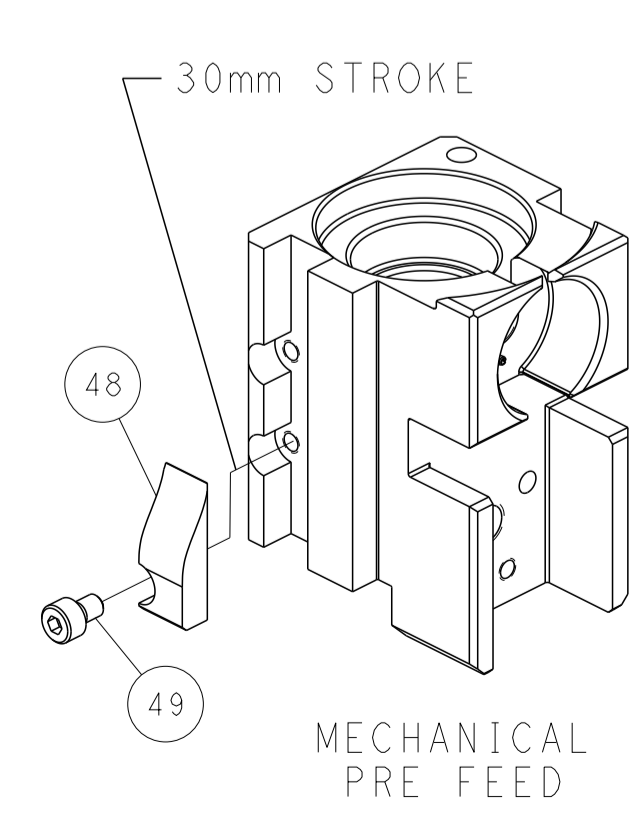
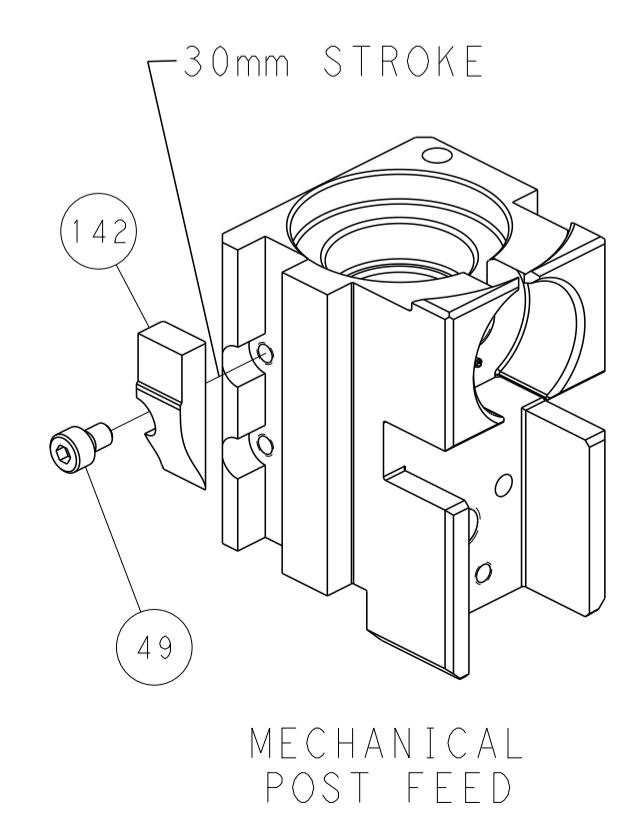


FEED SPRING SETTING POSITION (SHOWN FROM REAR SIDE)



DETAIL A

CAM POSITIONS



PACIFIC VERSION
 Shown on sheets 3 of 4 & 4 of 4
 (Atlantic version shown on sheets 1 of 4 & 2 of 4)

DIMENSIONS:		TOLERANCES UNLESS OTHERWISE SPECIFIED:		DWN L. ZHANG 25SEP2012		TE Connectivity	
mm	0 PLC ±	1 PLC ±	2 PLC ±	3 PLC ±	4 PLC ±	Harrisburg, PA 17105-3608	
MATERIAL:		FINISH:		APVD S. XI 25SEP2012		NAME	
				PRODUCT SPEC		Ocean Side Feed	
				APPLICATION SPEC		Applicator	
				WEIGHT		SIZE CAGE CODE DRAWING NO	
				Customer Accessible Production Drawing		A1 00779 C=2151772	
				SCALE		RESTRICTED TO	
				1:2		SHEET 4 OF 4 REV E	