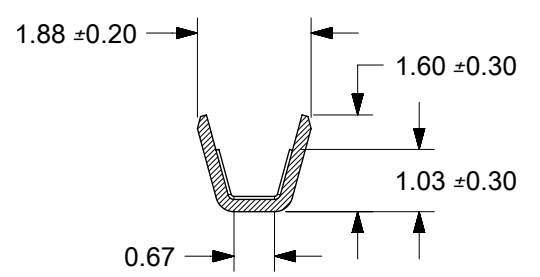
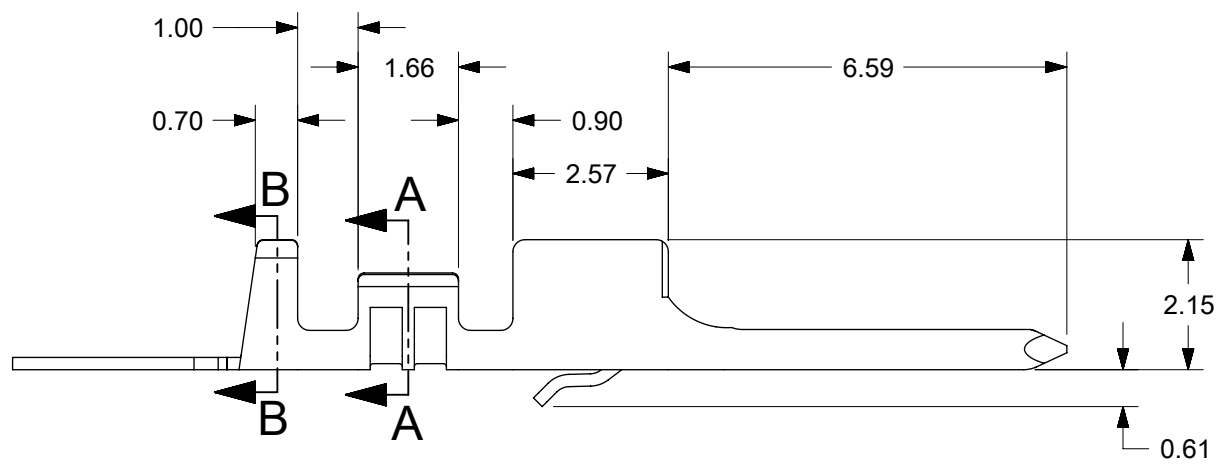
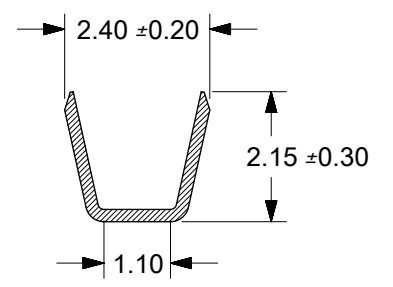


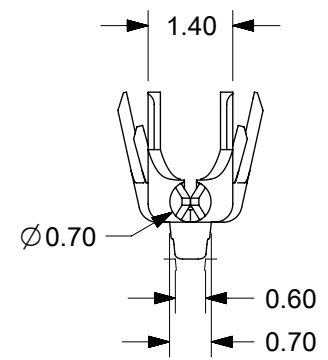
- NOTES:
1. MATERIAL: PHOSPHOR BRONZE ALLOY
  2. PLATING: 2.50 $\mu$ m/100 $\mu$ in TIN OVERALL  
OVER 1.25 $\mu$ m/50 $\mu$ in OVERALL NICKEL UNDERPLATING.
  3. PART CONFORMS TO PRODUCT SPECIFICATION PS-45579-001.
  4. TERMINAL FOR USE IN SPOX PLUG 45626.
  5. FOR TERMINAL ORIENTATION SEE DRAWING SD-45626-001.
  6. USE MOLEX EXTRACTION TOOL 63813-1400 TO REMOVE TERMINAL WITHOUT DAMAGE TO THE PLUG CORE. REMOVED TERMINAL IS NOT USABLE.
  7. CONTACT WIPE IN 45626-0001 HOUSING WHEN MATED TO 08-70-1045 TERMINAL IN 45579-0001 HOUSING:  
STANDARD WIPE (ALL CIRCUITS EXCEPT CKT 1) 2.28mm +0.23/-0.25  
FIRST-MAKE / LAST BREAK (CIRCUIT 1) 3.28mm +0.24/-0.26  
TOLERANCE CALCULATED BY ROOT MEAN SQUARE METHOD (RMS)



SECTION A-A



SECTION B-B



THIS DRAWING CONTAINS INFORMATION THAT IS PROPRIETARY TO MOLEX ELECTRONIC TECHNOLOGIES, LLC AND SHOULD NOT BE USED WITHOUT WRITTEN PERMISSION									
DIMENSION UNITS		SCALE		CURRENT REV DESC:				<b>molex</b>	
MM		8:1		EC NO: 625546					
GENERAL TOLERANCES (UNLESS SPECIFIED)				DRWN: ABABU01		2017/06/30		0.70MM SPOX MALE CRIMP PIN TERMINAL 22-24AWG	
				CHK'D: ISHWARG		2019/10/18		PRODUCT CUSTOMER DRAWING	
4 PLACES $\pm$				APPR: ISHWARG		2019/10/18		DOCUMENT NUMBER	
3 PLACES $\pm$				INITIAL REVISION:		2004/02/26		SD-45627-002	
2 PLACES $\pm$ 0.13				DRWN: KSTILES		2004/05/18		DOC TYPE DOC PART REVISION	
1 PLACE $\pm$ 0.25				APPR: JCOMERCI				PSD 001 B	
0 PLACES $\pm$				ANGULAR TOL $\pm$ 0.5°				MATERIAL NUMBER CUSTOMER SHEET NUMBER	
DRAFT WHERE APPLICABLE MUST REMAIN WITHIN DIMENSIONS				THIRD ANGLE PROJECTION		DRAWING SERIES		45627 45627	
				B-SIZE		45627		45627-0002 IBM 1 OF 1	