

## XLamp® XP-E2 LED Product Change Notification Addendum

Customer Name: XP-E2 Blue, Green LED Customers

PCN Reference Number: CreeLED-PCN-5318A  
Date Issued: August 31, 2022

This courtesy notification is an addendum to CreeLED-PCN-5318 to advise that Cree LED is qualifying an additional fab location for the XLamp® XP-E2 Blue and Green LEDs which will allow better manufacturing flexibility.

Please review the additional information below.

### Affected Product

Table 1 provides a list of products affected by this change:

*Table 1 Affected Products List*

Cree LED XLamp LED Family	Cree LED XLamp LED	Cree LED Part Number
XP-E2	Blue	XPEBBL-L1-XXXX-XXXXX
	Green	XPEBGR-L1-XXXX-XXXXX

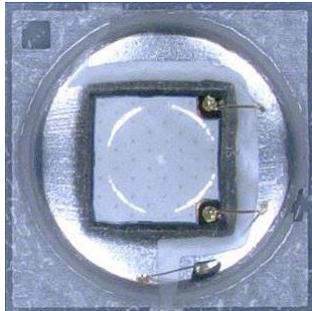
### Description of the Change

Cree LED is qualifying an additional fab location for the affected LED.

The visual appearance of the LED might be different, depending on which fab location is used. Examples of the different visual appearances are shown below. All the parametric changes listed in CreeLED-PCN 5318 remain in effect.

Figure 1 XP-E2 Blue Appearance Comparison

**Current Appearance**



**Alternate Appearance**

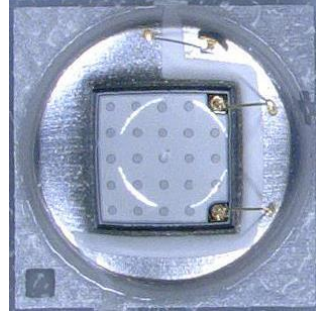
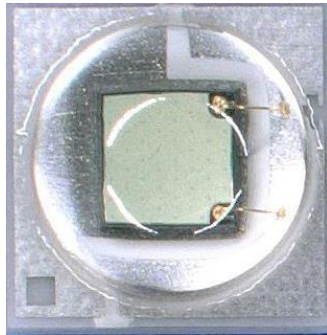
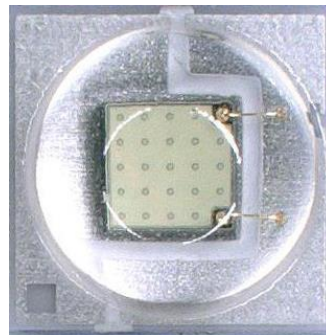


Figure 2 XP-E2 Green Appearance Comparison

**Current Appearance**



**Alternate Appearance**



## Reason for the Change

The new fab provides additional manufacturing and flexibility.

## Change Impact on Form, Fit, Function, or Reliability

This change has no impact on the form, fit, or reliability of this LED other than the ones already listed in CreeLED-PCN-5318.

## Key Dates

Table 2 provides an estimated date for initial shipments of the LED affected by this change. Any updates to these dates can be provided by the Cree LED contact listed in Table 3.

Table 2 Key PCN Estimated Dates

<b>Estimated Initial Ship Date:</b>	<b>August, 2022</b>
-------------------------------------	---------------------

Starting on the estimated shipment date in Table 2, reels of the LEDs can be identified by a 'C' or 'D' in the last character of the bin code. The bin code is clearly identified on each packaged reel.

Shipments may be received containing both appearances in the same shipment.

### Cree LED Contact Information

If you have any questions regarding this PCN please contact:

Table 3 PCN Contact

<b>Contact:</b>	Cree LED Customer Service
<b>Contact E-Mail:</b>	<a href="mailto:xlampsales@cree-led.com">xlampsales@cree-led.com</a>
<b>Contact Phone:</b>	US toll free: 1-844-273-3533 Outside the US: +1 919-313-5301
<b>Address:</b>	CreeLED, Inc. 4400 Silicon Dr Durham, NC 27703-8475 USA