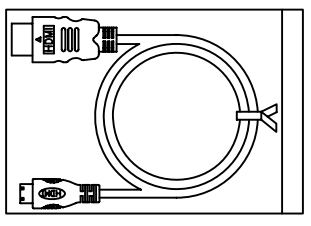
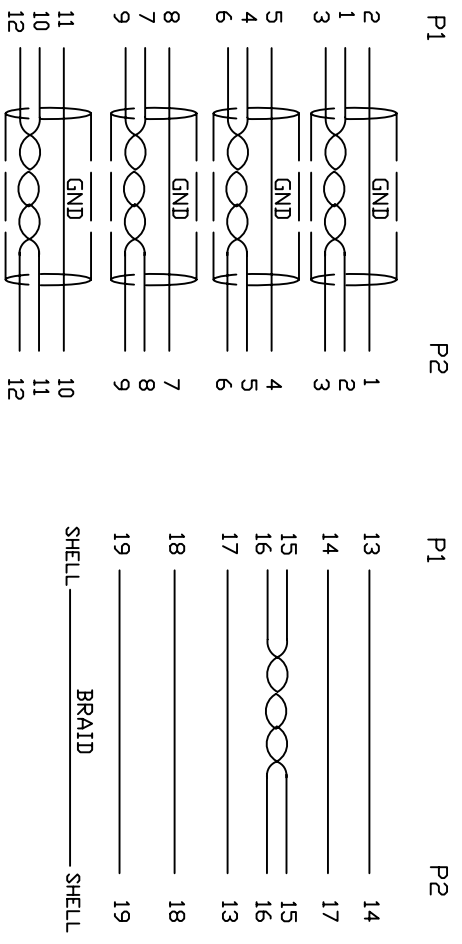


1. Wiring Diagram.



2. Cable test condition :

Open / Short : 100%

Insulation resistance : 5M ohms

Contact resistance : 2 ohm

Hipot : DC 300V / 1 sec

3. Each pcs with PE polybag.

7	COPER	W25MM*W145MM	1	
6	COPER	W20MM*W135MM	1	
5	PVC	45P PVC BLACK OVERMOLD	259	
4	PE	LLDPE 500026 6201 INSIDE MOLDING	169	
3	CONN	HDMI C TYPE MALE PIN G/F ,SHELL PLATED NICKEL, INSULATION BLACK	1	P2
2	CONN	HDMI A TYPE MALE PIN G/F ,SHELL PLATED NICKEL, INSULATION BLACK	1	P1
1	CABLE	UL20276 《30AWG (7/0.1TS) *P+EA+AL/MY》 *4+30AWG (7/0.1TS) *5C +AEM(16/6/0.12AM) OD6.0 BLACK	1	50000mm

A		INITIAL RELEASE		2017/7/26
REVECH#		DESCRIPTION		DATE
Cnc Tech,LLC		HDMI A/M TO HDMI C/M CABLE		REV A
DRAWN	EDWIN LIAI	DATE	07/26/17	CUSTOMER P/No:
CHECKED	W/in.C	DATE	07/26/17	CUSTOMER:
APPROVAL				
SHEET 1 OF 1		TITLE: HDMI A/M TO HDMI C/M CABLE		
DWN NO. 742-10010-00500		REV A		

DESCRIPTION

BILL OF MATERIAL