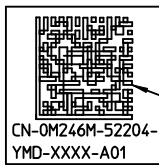
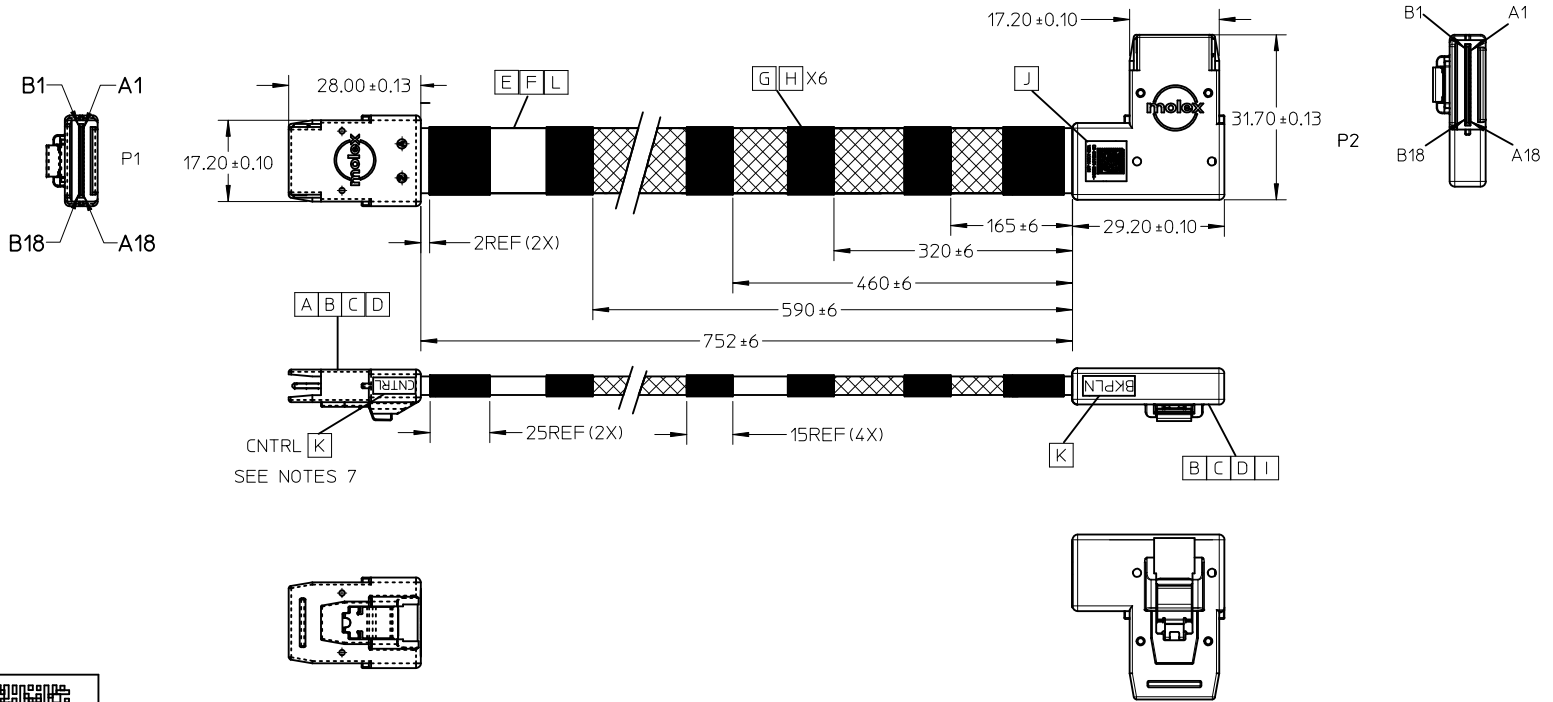


REVISIONS				
EC NO	DATE	REV	DESCRIPTION	CHANGER
NA	2010/06/10	A	INITIAL RELEASE	LUCKY
CY11-5360	2010/08/27	B	CHANGE CUSTOMER VERSION FROM 'A00' TO 'A01'(LABEL)	LUCKY

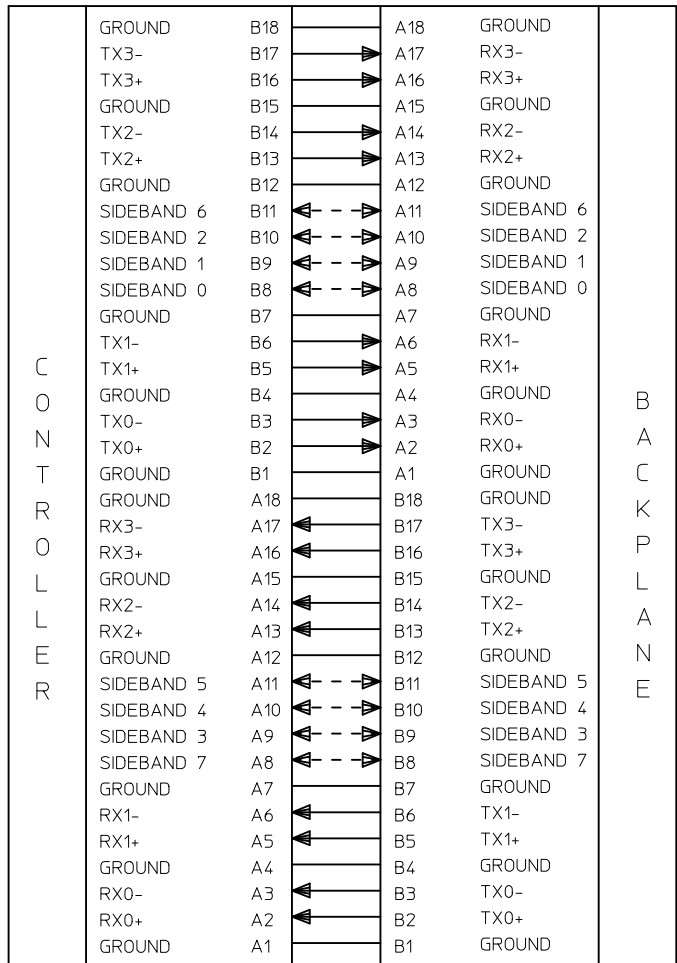


READING AS: CN0M246M52204YMDXXXXA01
 CN-0M246M-52204-YMD-XXXX-A01
 LABEL FORMART DETAIL

IPASS™ IS A TRADEMARK OF MOLEX

ENTER DESCRIPTION EC NO: USY2011-0241 DRWN: ZYU CHKD: W. LUCKY APPR: BLAU	QUALITY SYMBOLS 	GENERAL TOLERANCES (UNLESS SPECIFIED)		DIMENSION STYLE MM ONLY	SCALE ---	DESIGN UNITS METRIC	THIRD ANGLE PROJECTION
		4 PLACES ± --- ± --- 3 PLACES ± --- ± --- 2 PLACES ± --- ± --- 1 PLACE ± --- ± ---	mm INCH DRAWN BY: ZYU CHECKED BY: W. LUCKY APPROVED BY: BLAU	DATE: 2010/10/07 DATE: 2010/10/07 DATE: 2010/10/11	TITLE 36CKTIPASS RT ANG RT EXIT - ST .752M		
		ANGULAR ± --- °	MATERIAL NO. 1110964001	MOLEX INCORPORATED DOCUMENT NO. SD-111096-4001	SHEET NO. 1 OF 3		
		DRAFT WHERE APPLICABLE MUST REMAIN WITHIN DIMENSIONS	SIZE A3	THIS DRAWING CONTAINS INFORMATION THAT IS PROPRIETARY TO MOLEX INCORPORATED AND SHOULD NOT BE USED WITHOUT WRITTEN PERMISSION			

P1 P2



CONTROLLER

BACKPLANE

NOTE:
1. ALL SIGNAL GROUNDS ARE BUSSED IN PCB.

TM
IPASS IS A TRADEMARK OF MOLEX.

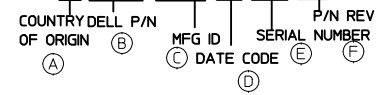
ITEM	DESCRIPTION	L(mm)	QTY.
L	8C*30AWG;TS:GY:P=1.0MM:UL2651		1PCS
K	Blank label 5x10mm Thermal Transfer		2PCS
J	Blank Label 0.375"*0.375" Brady# B-423		1PCS
I	PCBfor Ipass 36CKT R/A Right FR406		1PCS
H	HST F 10MM 125C (UL) BLK	A/R	6PCS
G	KUNJIE ACETATE CLOTH TAPE 12MM BLACK	A/R	6PCS
F	Braid sleeving OD:9.5mm Black HF	752REF	1PCS
E	1P*30AWG;SHLD:FEP:BU:0.90*2.21MM:Twin-ax	780REF	8PCS
D	PE G812 LDPE NATURAL		A/R
C	Ipass Latach(Local vender)		2PCS
B	PBT POLYESTER 30% GF BLACK UL94V-0		A/R
A	Raw PCB 172010286+ HF Solder Wire		2PCS

ENTER DESCRIPTION EC NO: USY2011-0241 DRW:ZYU 2010/10/07 CHKD:W.LUCKY 2010/10/07 APPR:BLAU 2010/10/11	QUALITY SYMBOLS ▽=0 ▽=0	GENERAL TOLERANCES (UNLESS SPECIFIED)		DIMENSION STYLE MM ONLY		SCALE ---	DESIGN UNITS METRIC	THIRD ANGLE PROJECTION		
			mm	INCH	DRAWN BY ZYU	DATE 2010/10/07	TITLE 36CKTIPASS RT ANG RT EXIT - ST .752M			
		4 PLACES	±---	±---	CHECKED BY W.LUCKY	DATE 2010/10/07	MOLEX INCORPORATED			
		3 PLACES	±---	±---	APPROVED BY BLAU	DATE 2010/10/11				
2 PLACES	±---	±---	ANGULAR ±---°		MATERIAL NO. 1110964001	DOCUMENT NO. SD-111096-4001	SHEET NO. 2 OF 3			
1 PLACE	±---	±---	DRAFT WHERE APPLICABLE MUST REMAIN WITHIN DIMENSIONS		SIZE A3	THIS DRAWING CONTAINS INFORMATION THAT IS PROPRIETARY TO MOLEX INCORPORATED AND SHOULD NOT BE USED WITHOUT WRITTEN PERMISSION				

NOTES

1. IPASS INNERMOLD WITH PE RESIN;
IPASS OUTERMOLD WITH PBT RESIN.
2. THIS PRODUCT MUST MEET EU CHEMICAL SUBSTANCE SPECIFICATION FOR PRODUCTS(EU 2002/95/EC RoHS).
3. FOR IPASS END ASSEMBLY PLS REFERS TO E-74562-010 FOR DETAIL.
4. THE PRODUCT ELECTRICAL PERFORMANCE AND MECHANICAL PERFORMANCE REFER TO SAS 2.0 INDUSTRIAL STANDARD
5. MECHANICAL PERFORMANCE REFER TO PS-75783-001.
6. RECOMMENDED MINIMUM BEND RADIUS IS 28MM.
7. TEXT NEED USE FONT ARIAL AND THE TEXT SHOULD BE 3MM MIN.
8. LABEL DETAIL
 - 8.1 FOR LABEL DETAIL PLEASE REFER TO DELL SPECIFICATION NUMBER:
13190 REV. A28-00 TYPE W
 - 8.2 LABEL FORMART:
CN-0M246M-52204-YMD-XXXX-A01
 - 8.3.TEXT NEED USE FONT VERDANA AND THE TEXT SHOULD BE 3PT MINIMUM.
9. CABLES-REFERENCE DOCUMENTS
DN362 SPEC,ENG,STD,DFE
6T198 SPEC,DFE, RESTRICTED-MTL
13190 SPEC, SPLR, BRCD, LBL.(USE IF SHIPPED DIRECTLY TO DELL)
ENG0000116 DOC, PROC, CABLE, ENG
ENG0000117 SPEC, PRCS, QUAL, CBL, ELEC
ENG0000121 DOC, PROC, PPAP, CBL, ENG
ASME Y14.5M-1994 DIMENSIONING AND TOLERANCING

PS:
DELL LABEL SPEC(13190 A28-00) EXTRACT
EVERY SECTION SEE DETAIL REMARK:
CN-0M246M-52204-YMD-XXXX-A01



- (A) ORIGINAL COUNTRY
- (B) DELL P/N
- (C) MFG ID
- (D) DATE CODE
 - 1.FIRST CHARACTER IS YEAR CODE: LAST NUMBER OF THE YEAR.
 - 2.SECOND CHARACTER IS MONTH CODE, SEE CHART.

JAN	FEB	MAR	APR	MAY	JUN	JUL	AUG	SEP	OCT	NOV	DEC
1	2	3	4	5	6	7	8	9	A	B	C
- (E) SERIAL NUMBER.
XXXX (DELL SERIAL NUMBER); SUPPLIERS WILL BE ALLOWED THE USE OF CHARACTERS 0-9, A-0IN THE FIRST POSITION OF THE SEQUENCE NUMBER, WITH NO RESTRICTIONS ON THE 2NDTHROUGH 4TH POSITIONS PROVIDED THAT EACH SEQUENCE NUMBER IS INDEED UNIQUE.
- (F) P/N REV

3.3RD CHARACTER IS DAY CODE: 1ST -- 9TH = 1 -- 9 AND 10ST -- 31ST
= A -- V

ENTER DESCRIPTION EC NO: USY2011-0241 DRWN:ZYU 2010/10/07 CHKD:W.LUCKY 2010/10/07 APPR:BLAU 2010/10/11	QUALITY SYMBOLS ▼=0 ▽=0	GENERAL TOLERANCES (UNLESS SPECIFIED)	DIMENSION STYLE MM ONLY	SCALE ---	DESIGN UNITS METRIC	THIRD ANGLE PROJECTION																
			<table border="1" style="width: 100%; text-align: center;"> <tr> <td></td><td>mm</td><td>INCH</td></tr> <tr> <td>4 PLACES</td><td>± ---</td><td>± ---</td></tr> <tr> <td>3 PLACES</td><td>± ---</td><td>± ---</td></tr> <tr> <td>2 PLACES</td><td>± ---</td><td>± ---</td></tr> <tr> <td>1 PLACE</td><td>± ---</td><td>± ---</td></tr> </table>		mm	INCH	4 PLACES	± ---	± ---	3 PLACES	± ---	± ---	2 PLACES	± ---	± ---	1 PLACE	± ---	± ---	DRAWN BY: ZYU DATE: 2010/10/07	TITLE: 36CKTIPASS RT ANG RT EXIT - ST .752M		
		mm	INCH																			
	4 PLACES	± ---	± ---																			
3 PLACES	± ---	± ---																				
2 PLACES	± ---	± ---																				
1 PLACE	± ---	± ---																				
		ANGULAR ±---°	CHECKED BY: W.LUCKY DATE: 2010/10/07	MOLEX INCORPORATED																		
		DRAFT WHERE APPLICABLE MUST REMAIN WITHIN DIMENSIONS	APPROVED BY: BLAU DATE: 2010/10/11	MATERIAL NO. 1110964001	DOCUMENT NO. SD-111096-4001	SHEET NO. 3 OF 3																