

SPICE-Equivalent circuit model library

Table 1. Equivalent circuit data

Part Number	L (μ H)	F _{res} (MHz)	C1 (pF)	R1 (Ω)	R2 Nominal DCR of winding (Ω)
HCMA1707-1R5-R	1.5	22.8	32.50	878.70	0.0019
HCMA1707-2R2-R	2.2	18.3	34.29	1008.60	0.0022
HCMA1707-4R7-R	4.7	11.9	38.14	1325.57	0.0041
HCMA1707-6R8-R	6.8	9.6	40.16	1514.09	0.0066
HCMA1707-8R2-R	8.2	8.7	41.23	1619.65	0.0081
HCMA1707-100-R	10	7.7	42.39	1739.59	0.0093
HCMA1707-150-R	15	6.1	44.87	2012.99	0.0145
HCMA1707-220-R	22	4.9	47.34	2310.57	0.0205
HCMA1707-330-R	33	3.9	50.10	2673.70	0.0351
HCMA1707-470-R	47	3.2	52.65	3036.71	0.041
HCMA1707-680-R	68	2.6	55.44	3468.57	0.074

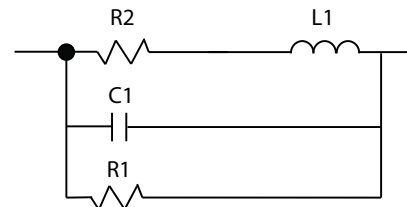


Figure 1. Equivalent circuit

Disclaimer

The data provided is for reference and is intended for evaluation purposes only. Users should verify all intended results in the end application.

Eaton
Electronics Division
 1000 Eaton Boulevard
 Cleveland, OH 44122
 United States
www.eaton.com/electronics

© 2018 Eaton
 All Rights Reserved
 Printed in USA
 Publication No. HCMA1707 Spice
 April 2018