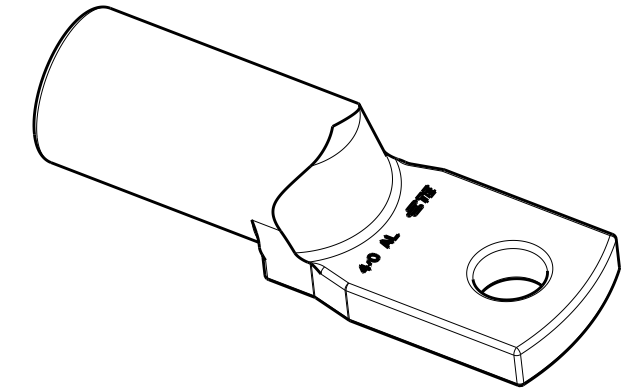
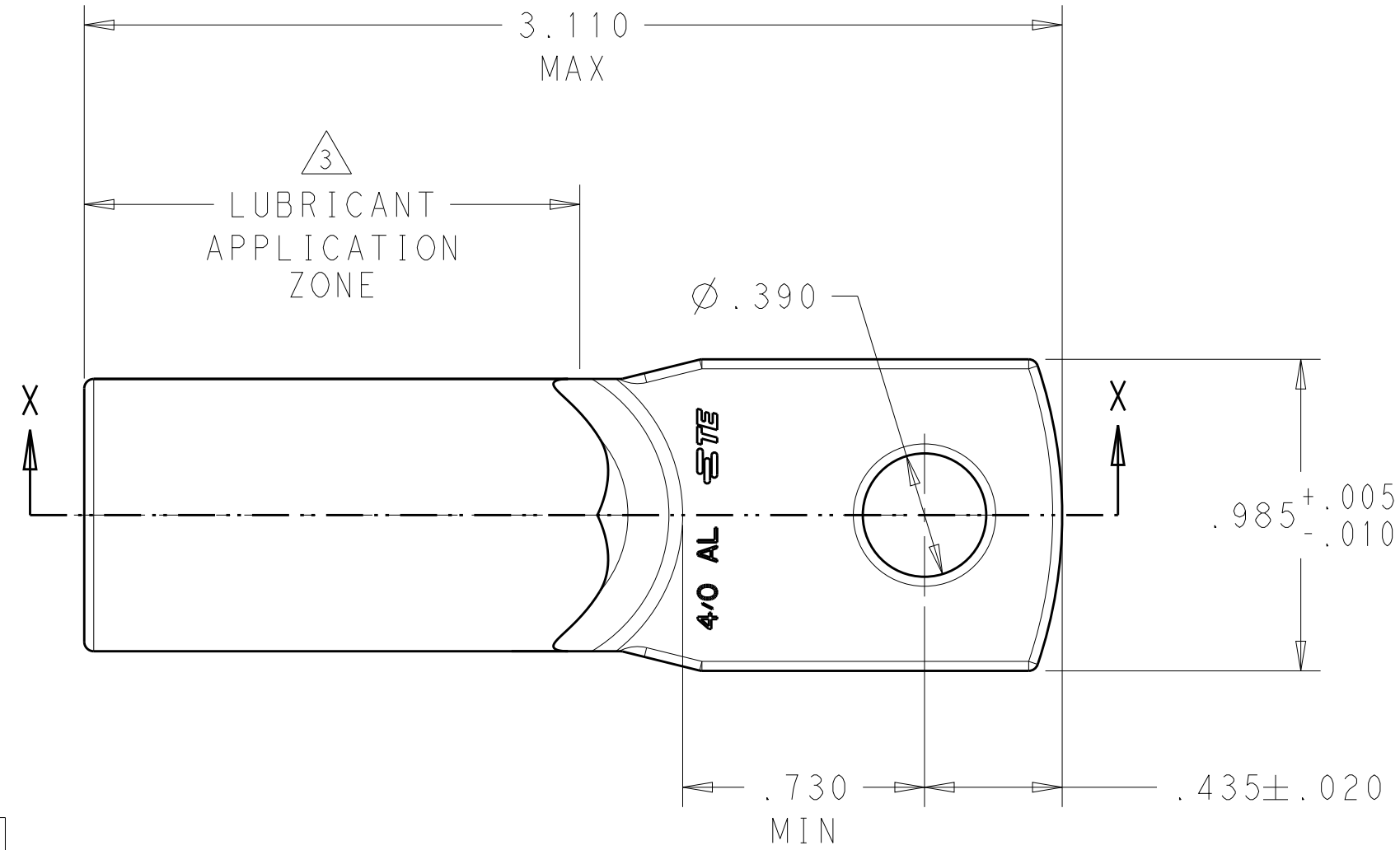
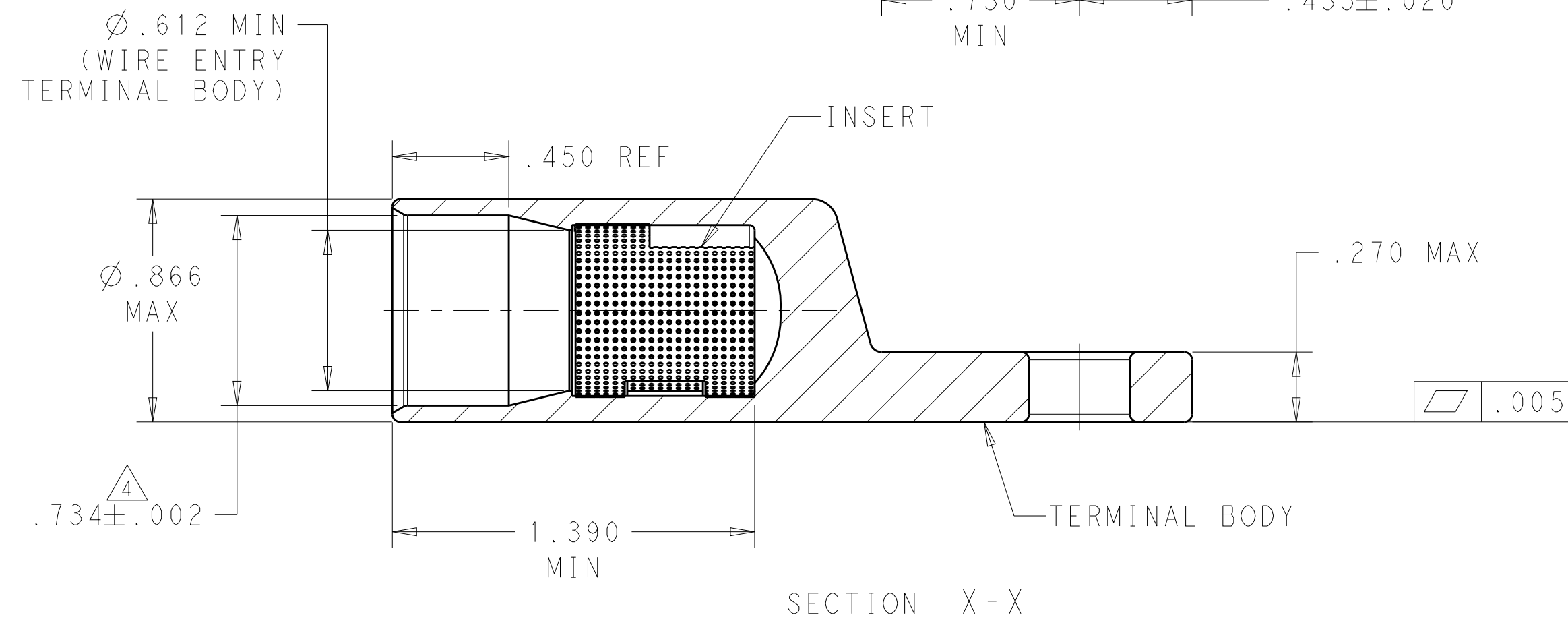


P	LTR	DESCRIPTION	DATE	DWN	APVD
C		REV PER ECO 19-019314	2-27-20	CT	PD

1. MATERIAL:
BODY: ALUMINUM PER ASTM B317
INSERT: BRASS PER ASTM B36
2. FINISH:
BODY: .000600 MIN MATTE TIN PER ASTM B545
OVER .000060 MIN NICKEL PER ASTM B733.
INSERT: .000150 MIN MATTE NICKEL PER QQ-N-290
3. PTFE DRY LUBRICANT 360 DEGREE ON OUTER DIAMETER OF CRIMP BARREL IN ZONE SHOWN.
4. WIRE INSULATION RANGE: .590-.683.
5. SEE TE CONNECTIVITY APPLICATION SPEC. 114-32098 FOR APPLICATION REQUIREMENTS.
6. SEE TE CONNECTIVITY INSTRUCTION SHEET 408-32087 FOR TOOLING AND CRIMP INSTRUCTIONS, FIGURE 3 FOR WIRE STRIPPING DETAIL.



SCALE 1:1



2102575-1

PART NUMBER

THIS DRAWING IS A CONTROLLED DOCUMENT.		DWN D. FABIAN 23AUG2012	TE Connectivity	
DIMENSIONS: INCHES		CHK DEBOCK, KIM 28NOV2012		
TOLERANCES UNLESS OTHERWISE SPECIFIED:		APVD DEBOCK, KIM 28NOV2012	NAME ASSEMBLY, ALUMINUM TERMINAL, STRAIGHT, SINGLE HOLE, 4/0	
0 PLC ±- 1 PLC ±.1 2 PLC ±.01 3 PLC ±.005 4 PLC ±.0005 ANGLES ±1°		PRODUCT SPEC -	SIZE A200779	CAGE CODE C-2102575
MATERIAL SEE CALL-OUT material_2		FINISH SEE CALL-OUT finish_spec_2	APPLIC. SPEC -	RESTRICTED TO
CUSTOMER DRAWING		WEIGHT -	SCALE 2:1	SHEET 1 OF 1