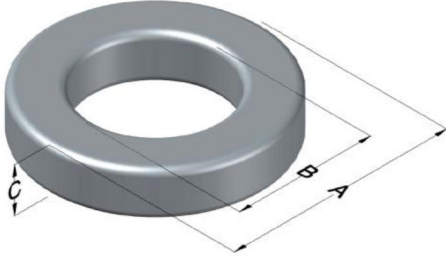




C058030A2

110 Delta Drive
 Pittsburgh, PA 15238
 NAFTA Sales: (1)800-245-3984
 HK Sales : (852)3102-9337
 magnetics@spang.com
 www.mag-inc.com



High Flux Permeability (μ)	A_L (nH/T ²)	Core Marking			Coating Color
		Lot Number	Part Number	Inductance Grade	
125	52 ± 8%	XXXXXX	030A2	X	Khaki

Dimensions	Uncoated		Coated Limits			Packaging
	(mm)	(in)	(mm)	(in)		
OD (A)	7.87	0.310	8.51	0.335	max	Bulk Pack 4 bags/box Box Qty= 10,000 pcs
ID (B)	3.96	0.156	3.45	0.136	min	
HT (C)	3.18	0.125	3.81	0.150	max	

Electrical Characteristics			Physical Characteristics						
Watt Loss @ 100 kHz, 100mT max (mW/cm ³)	DC Bias min (oersteds)		Voltage Breakdown wire to wire min (V _{AC})	Break Strength min (kg)	Window Area W _A (mm ²)	Cross Section A _e (mm ²)	Path Length L _e (mm)	Volume V _e (mm ³)	Weight (g)
	80%	50%							
1000	46.0	81.0	1250	10.0	9.35	5.99	17.9	107	0.8700

Winding Information					Temperature Rating	
Winding Length Per Turn				Wound Coil Dimensions (mm)		Curie Temp: 500°C
Winding Factor	(mm)	Winding Factor	(mm)	40% Winding Factor		Coating Temp (Continuous up to): 200°C
				OD	9.07	Notes:
0%	12.7	40%	14.5	HT	4.93	
				Max OD	11.0	
20%	13.6	45%	14.7	Max HT	6.73	
25%	13.8	50%	15.0	Surface Area (mm ²)		
30%	14.0	60%	15.5	Unwound Core	240	
35%	14.3	70%	16.1	40% Winding Factor	310	

