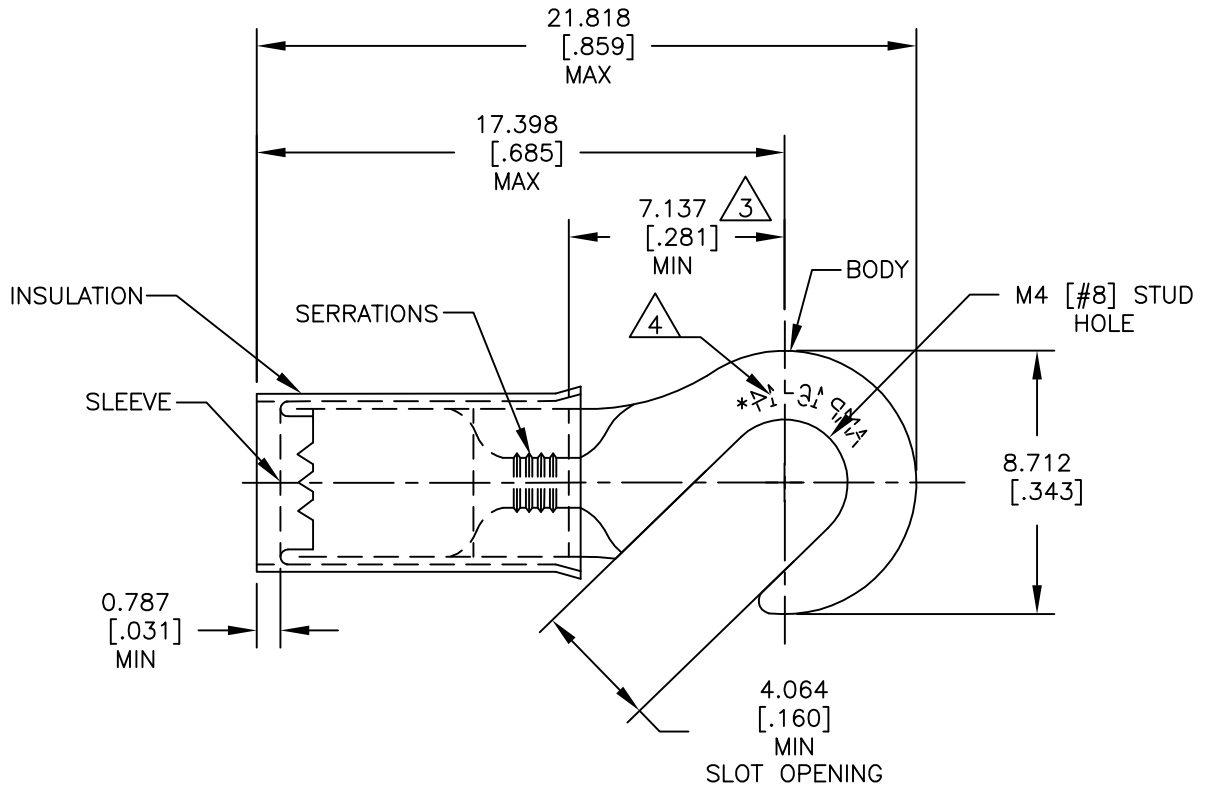


REVISIONS				
P	LTR	DESCRIPTION	DATE	APVD
	F1	REDRAWN PER ECO-17-007400	15DEC2017	RS DR

<b>AMP</b> WIRE RANGE	Listed FILE E13288	LR7189 Certified
16-14 AWG SOLID OR STRANDED	16-14 AWG SOLID OR STRANDED	16-14 AWG SOLID OR STRANDED



1 FOR  $\phi 2.921[\phi.115]$  TO  $\phi 4.318[\phi.170]$  WIRE INSULATION.

2 BODY MATERIAL THICKNESS:  $0.787 \pm 0.051[.031 \pm .002]$

3 APPLIES FROM EDGE OF METAL WIRE BARREL TO CENTER OF STUD HOLE.

4 STAMP AMP 16-14\* APPROX AS SHOWN.

5 MATERIAL:  
BODY & SLEEVE: COPPER PER ASTM B152  
INSULATION: NYLON

6 FINISH:  
BODY & SLEEVE: TIN PLATE PER ASTM B545  
INSULATION: COLOR-BLUE.

5000	ON TAPE	2-320306-1
1000	LOOSE PIECE	320306
QTY	PACKAGE TYPE	PART NO

RELEASED FOR PUBLICATION

ALL RIGHTS RESERVED.

THIS DRAWING IS UNPUBLISHED.

COPYRIGHT - TE Connectivity

DIMENSIONS: mm [INCHES]	DWN RAVI S	15DEC2017	MATERIAL	5	FINISH	6
	CHK ROHDE DANIEL F	15DEC2017	TE Connectivity			
TOLERANCES UNLESS OTHERWISE SPECIFIED:	APVD ROHDE DANIEL F	15DEC2017				
0 PLC ± -	PRODUCT SPEC		NAME			
1 PLC ± -	UL 486 A-B		WIRE TERMINAL,			
2 PLC ± -	APPLICATION SPEC		P.I.D.G - HOOK, WIRE SIZE: 16-14			
3 PLC ± 0.127[.005]	114-2157		SIZE	CAGE CODE	DRAWING NO	RESTRICTED TO
4 PLC ± -	WEIGHT -		A4	00779	C= 320306	-
ANGLES ± 5°	CUSTOMER DRAWING		SCALE	SHEET	REV	
			4:1	1 OF 1	F1	