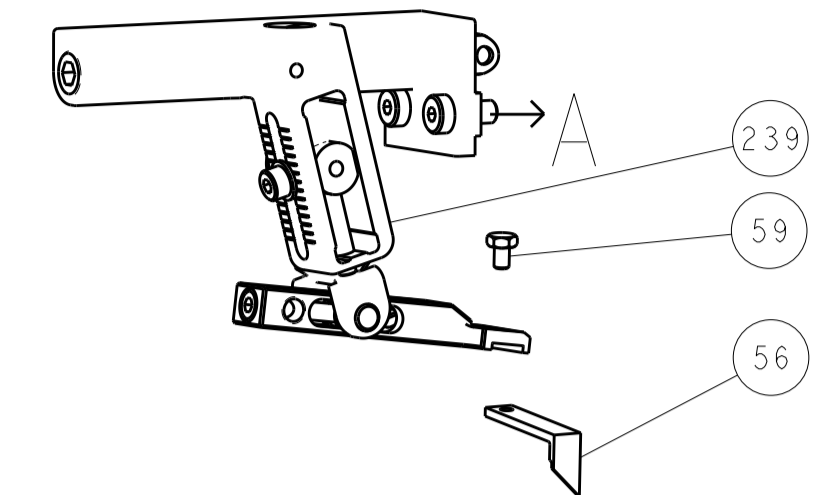
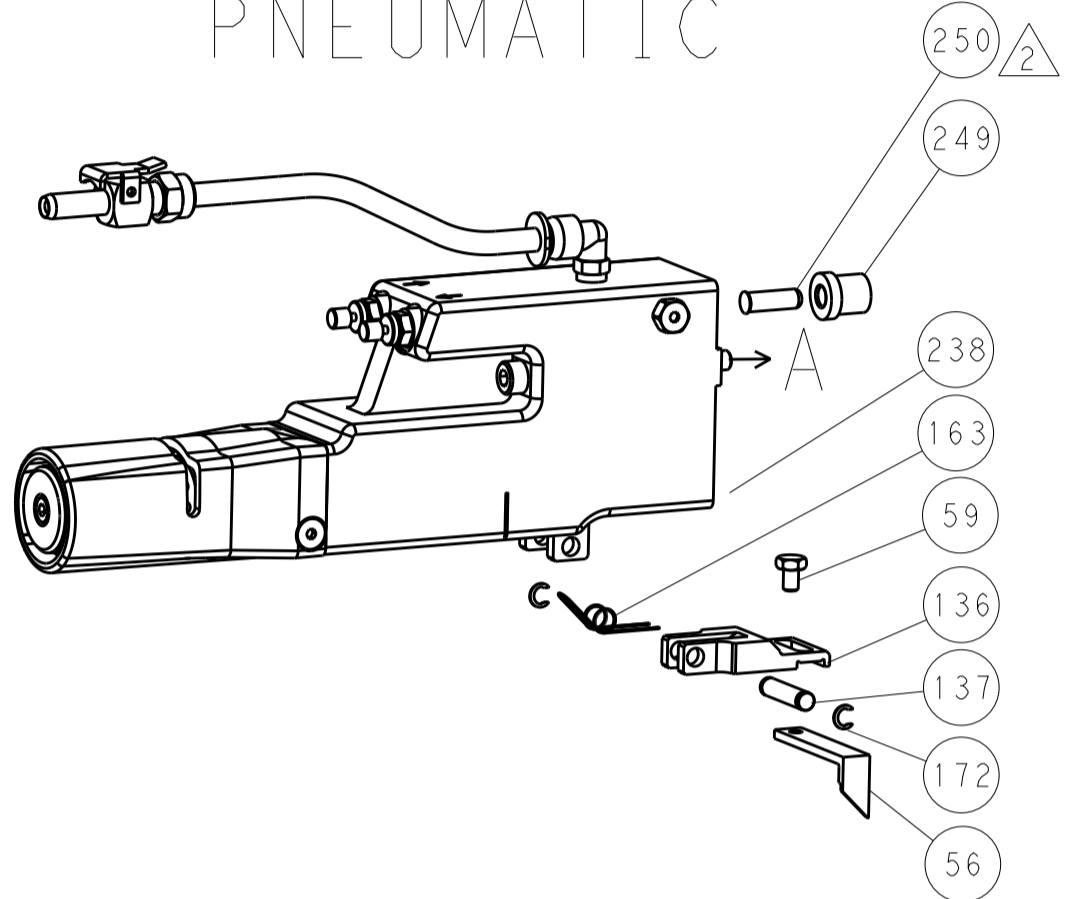


LOC	DIST	REV	DATE	BY	APPV
A	66				
REVISIONS			DATE	BY	APPV
SEE SHEET 1					

FEED TYPE MECHANICAL



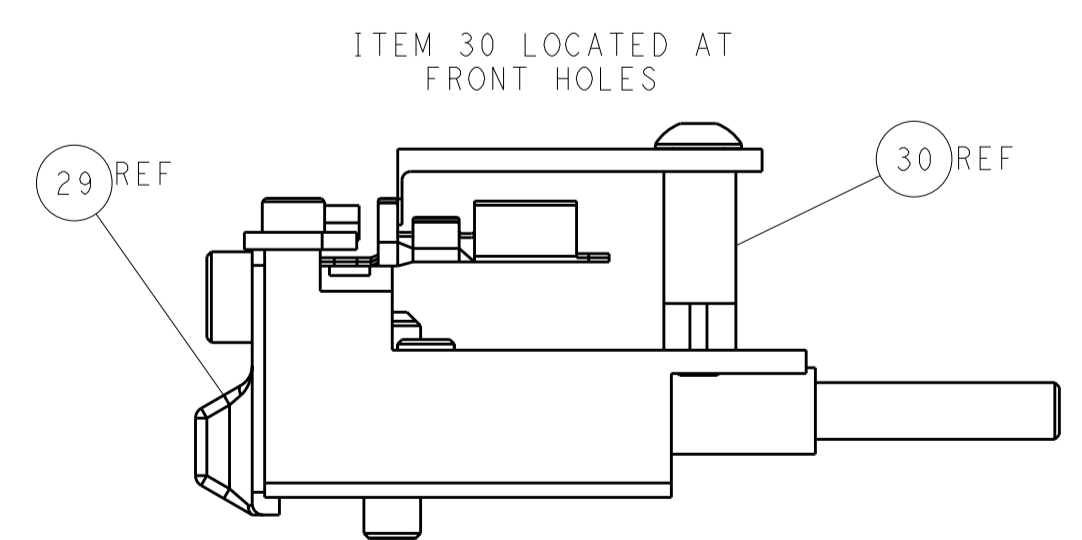
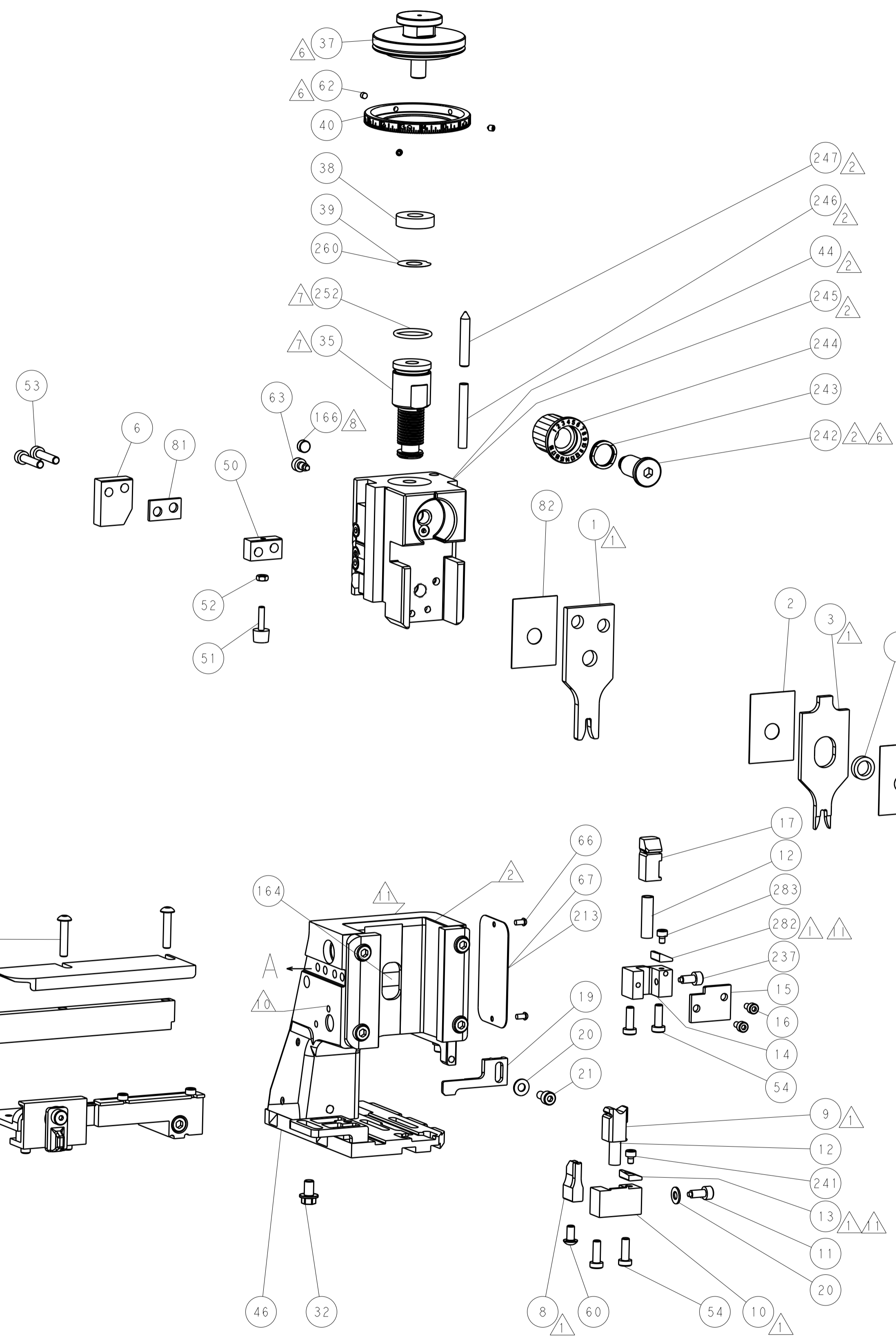
PNEUMATIC



SERVO LATCH PLATE



CAM POSITIONS



ATLANTIC VERSION
 Shown on sheets 1 of 4 & 2 of 4
 (Pacific version shown on sheets 3 of 4 & 4 of 4)

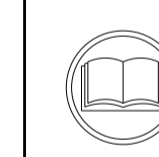
DIMENSIONS:		TOLERANCES UNLESS OTHERWISE SPECIFIED:		DWG: BOB_HIGMAN 23APR2014		TE Connectivity	
mm	0 PLC ±	1 PLC ±	2 PLC ±	3 PLC ±	4 PLC ±	Harrisburg, PA 17105-3608	
MATERIAL:		FINISH:		NAME: Ocean Side Feed Applicator		RESTRICTED TO:	
				SIZE: A1		CAGE CODE: 00779	
				DRAWING NO: C=2266283		SCALE: 1:2	
				SHEET: 2 OF 4		REV: B	

APPLICATOR STYLE CONVERSION CHART table with columns: CONVERT TO, PART NUMBERS REQUIRED, and various part numbers like 2119950-1, 1338683-8, etc.

APPLICATOR DATA table with columns: CRIMP SIZE, WIRE SIZE, INSUL SIZE, and APPLICATOR INSTRUCTIONS.

TERMINAL DATA: ARKLES/MERCURY TERMINAL TE CRIMP SPECIFICATION table and TERMINALS APPLIED table.

WIRE SIZE, CRIMP HEIGHT, CRIMP HEIGHT REFERENCE SETTING table.



- RECOMMENDED SPARE PARTS, GREASE BEARING SURFACES LIGHTLY, LUBRICATE DAILY PER THE APPLICATOR INSTRUCTION SHEET SUPPLIED WITH THE APPLICATOR, APPLICATOR SPECIFIC DATA TO BE ENTERED INTO BLANK MEMORY CHIP AT ASSEMBLY...

*WARNING ON INSTALLATION, SET WIRE DISC, ITEM 40 TO LARGEST WIRE SIZE SETTING. USE OF SETTINGS BELOW MINIMUM REQUIRED CRIMP HEIGHT SETTING WILL CAUSE DAMAGE TO CRIMP TOOLING.

Table with columns: PART NO, DESCRIPTION, ITEM NO, listing parts like 7-18023-7 SCR, SKT HD CAP M3 X 4.0, etc.

REVISIONS table with columns: DATE, DWN, APPD, listing revision details.

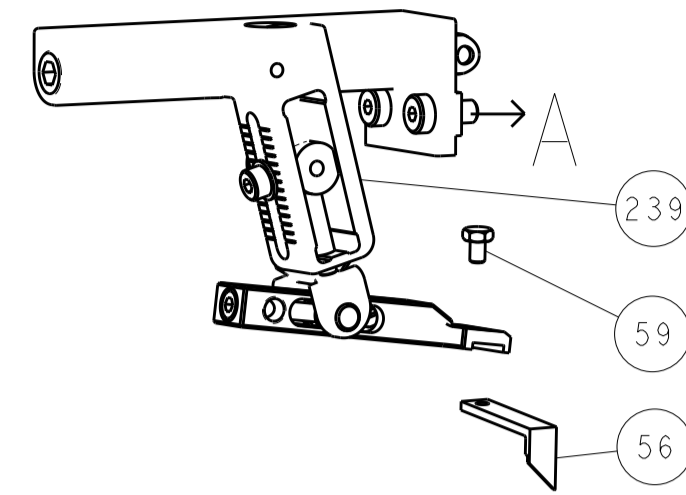
Main parts list table with columns: QTY, PART NO, DESCRIPTION, ITEM NO, listing numerous components like 7-18023-7 SCR, SKT HD CAP M3 X 4.0, 2168400-6 SHCS, LOW HEAD, RoHS, M5 X 16, etc.

PACIFIC VERSION Shown on sheets 3 of 4 & 4 of 4 (Atlantic version shown on sheets 1 of 4 & 2 of 4)

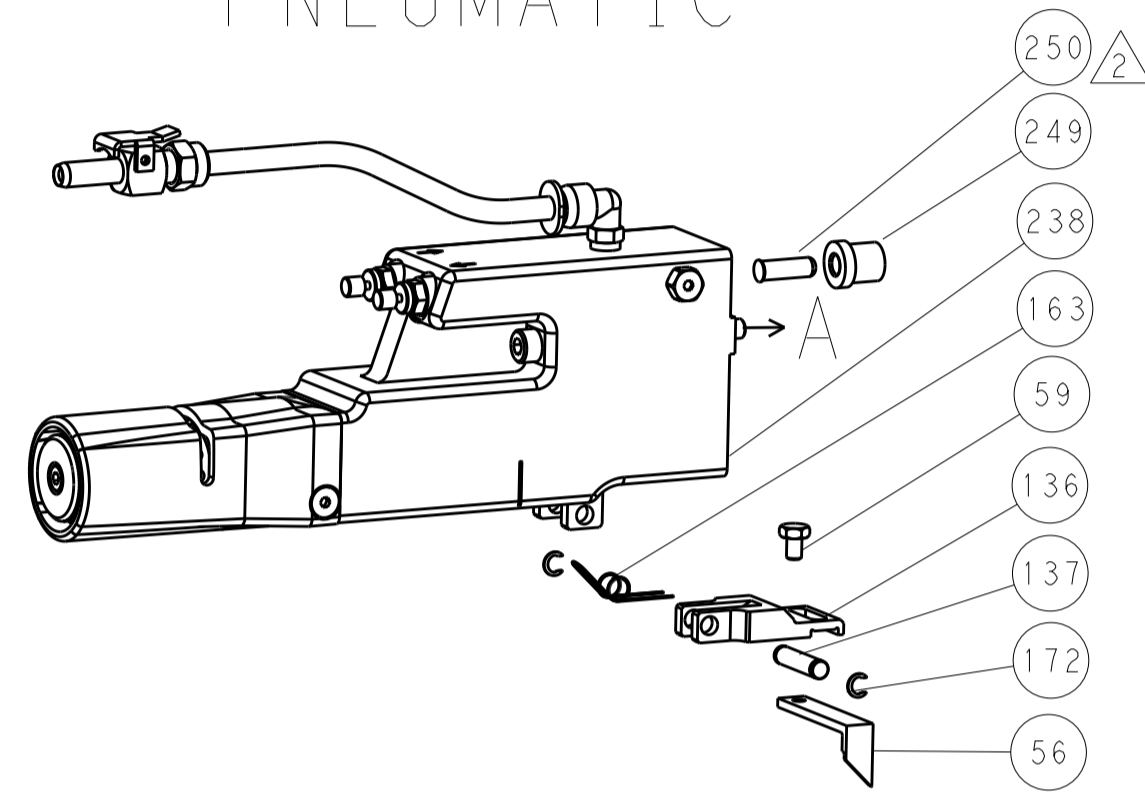
Product specification block including dimensions, tolerances, material, weight, and drawing information for Ocean Side Feed Applicator.

LOC		DIST		REVISIONS			
A	66	P	LTM	DESCRIPTION	DATE	OWN	APVD
		-	-	SEE SHEET 1	-	-	-

FEED TYPE MECHANICAL



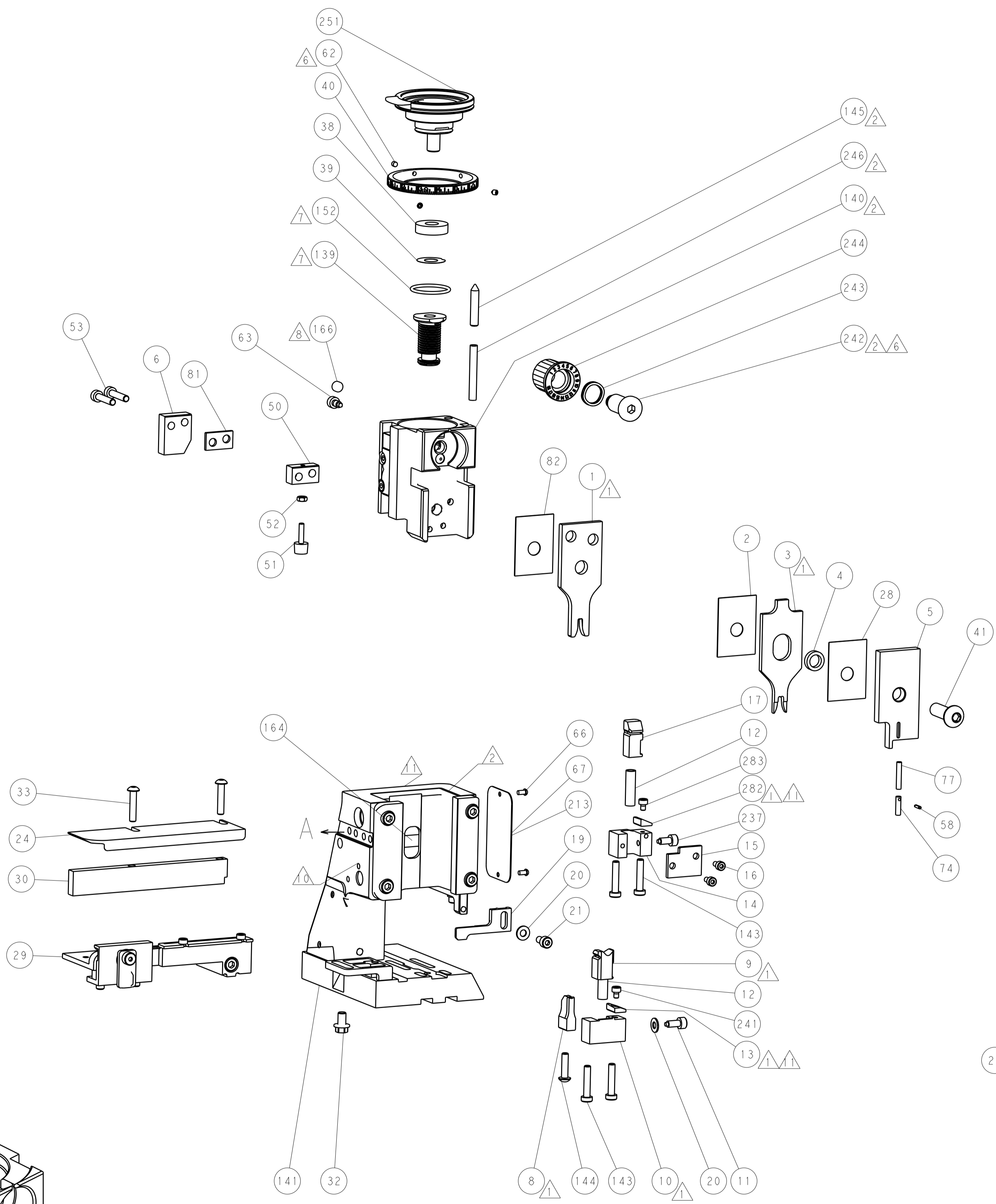
PNEUMATIC



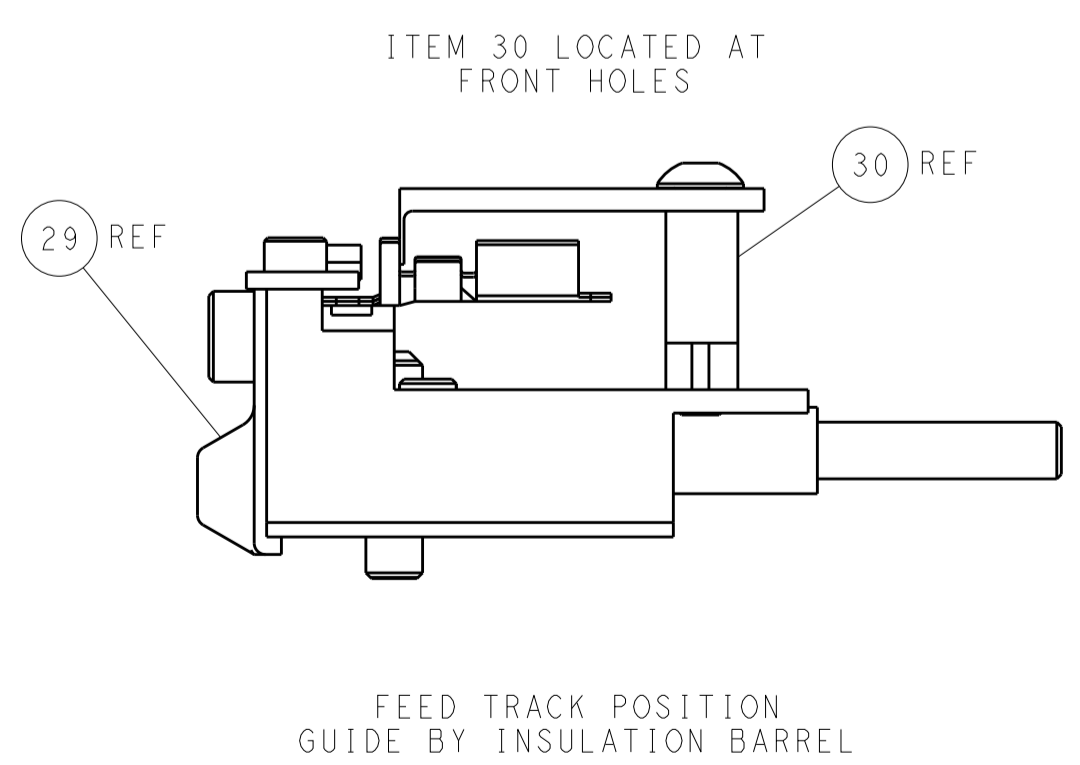
SERVO LATCH PLATE



CAM POSITIONS



PACIFIC VERSION
 Shown on sheets 3 of 4 & 4 of 4
 (Atlantic version shown on sheets 1 of 4 & 2 of 4)



DIMENSIONS:		TOLERANCES UNLESS OTHERWISE SPECIFIED:		DWG: BOB_HIGMAN 23APR2014		REV: G_BAILEY 23APR2014		NAME: Ocean Side Feed Applicator	
mm	0 PLC	±		SIZE	CAGE CODE	DRAWING NO	RESTRICTED TO		
	1 PLC	±		SCALE	1:2	SHEET 4 OF 4	REV B		
	2 PLC	±		Customer Accessible Production Drawing					
	3 PLC	±							
	4 PLC	±							
	ANGLES	±							
MATERIAL	FINISH			WEIGHT	A 00779 ©=2266283				