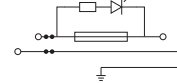
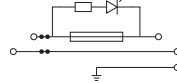
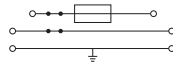
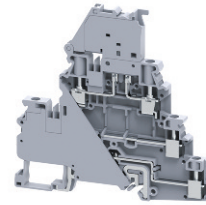
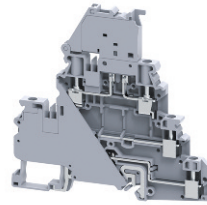
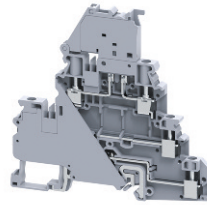


CYDLGF4

CYDLGF4L6-60V

CYDLGF4L110-240V



Top: Fuse Block, 5x20mm
Mid: Feed Through Terminal
Bottom: Ground
2x2 Jumper Channels

Top: Fuse Block, 5x20mm, LED
Mid: Feed Through Terminal
Bottom: Ground
2x2 Jumper Channels

Top: Fuse Block, 5x20mm, LED
Mid: Feed Through Terminal
Bottom: Ground
2x2 Jumper Channels

Dimensions & Weight

Width	6 mm	6 mm	6 mm
Length	94.5 mm	94.5 mm	94.5 mm
Height w DIN Rail	35 x 7.5 mm 35 x 15 mm	90.9 mm 98.4 mm	90.9 mm 98.4 mm
Weight per piece	40.8 g	35.4 g	35.4 g

Technical Data/Ratings

Approvals						
Wire Size (solid / stranded)	24-10 AWG	0.2-4 mm ²	24-10 AWG	0.2-4 mm ²	24-10 AWG	0.2-4 mm ²
Voltage Rating	300 V	1000V AC/DC	300 V	1000V AC/DC	300 V	500V AC/DC
Current Rating Fuse (Top)	10 A	10 A	10 A	10 A	10 A	10 A
Current Rating Feed Thru (Mid)	30 A	30 A	30 A	30 A	30 A	30 A
Torque	4.5 lb-in	0.5 Nm	4.5 lb-in	0.5 Nm	4.5 lb-in	0.5 Nm
Insulation Material	Polyamide 66		Polyamide 66		Polyamide 66	

Fuse Specifications

Fuse Type	5x20 / 5x25 mm	5x20 / 5x25 mm	5x20 / 5x25 mm
LED Indicator Voltage	-	6-60V AC/DC	110-240V AC/DC

Installation Instructions

Wire Stripping Length	9 mm	9 mm	9 mm
Screwdriver	Flat Head 0.6 x 3.5 mm	Flat Head 0.6 x 3.5 mm	Flat Head 0.6 x 3.5 mm

Terminal Blocks

Grey (standard)	CYDLGF4	Cat. No.	Std. Pk.	CYDLGF4L6-60L	Cat. No.	Std. Pk.	CYDLGF4L110-240V	Cat. No.	Std. Pk.
Blue BU	CYDLGF4/BU		50	CYDLGF4L6-60L/BU		50	CYDLGF4L110-240V/BU		50
Black BL	CYDLGF4/BL		50	CYDLGF4L6-60L/BL		50	CYDLGF4L110-240V/BL		50

Additional colors available.



Accessories

DIN Rail		Cat. No.	Std. Pk.	Cat. No.	Std. Pk.	Cat. No.	Std. Pk.
		2511120	20	2511120	20	2511120	20
		CA701-15/S	20	CA701-15/S	20	CA701-15/S	20
End Stop		Cat. No.	Std. Pk.	Cat. No.	Std. Pk.	Cat. No.	Std. Pk.
		CA702	50	CA702	50	CA702	50
		CA802	50	CA802	50	CA802	50
		CA202	50	CA202	50	CA202	50
Shorting Link/Jumpers		Cat. No.	Std. Pk.	Cat. No.	Std. Pk.	Cat. No.	Std. Pk.
2 pole		JX4/2	100	JX4/2	100	JX4/2	100
3 pole		JX4/3	50	JX4/3	50	JX4/3	50
4 pole		JX4/4	50	JX4/4	50	JX4/4	50
5 pole		-	-	-	-	-	-
6 pole		-	-	-	-	-	-
7 pole		-	-	-	-	-	-
8 pole		JX4/8	10	JX4/8	10	JX4/8	10
10 pole		JX4/10	10	JX4/10	10	JX4/10	10
16 pole		JX4/16	10	JX4/16	10	JX4/16	10
Marking Tag		Cat. No.	Std. Pk.	Cat. No.	Std. Pk.	Cat. No.	Std. Pk.
		MT6	1 Pk. (100 tags)	MT6	1 Pk. (100 tags)	MT6	1 Pk. (100 tags)
Warning Label		WLX4	1 Pk. (100 tags)	WLX4	1 Pk. (100 tags)	WLX4	1 Pk. (100 tags)

HIGHLIGHTS

- FEATURES**
- **Top Level** fuse link for 5x20mm fuse types
 - **Middle Level** Feed-Through
 - **Bottom Level** Grounding Terminal
 - 6mm wide compact design
 - 2 internal jumper channels on each level
 - **CYDLF4L** version with LED for blown fuse indication
 - Blocks can be used in AC & DC applications

APPLICATIONS

- Tight Space Fuse applications
- No need for additional Feed-Through Terminal
- Control Systems with fuse applications