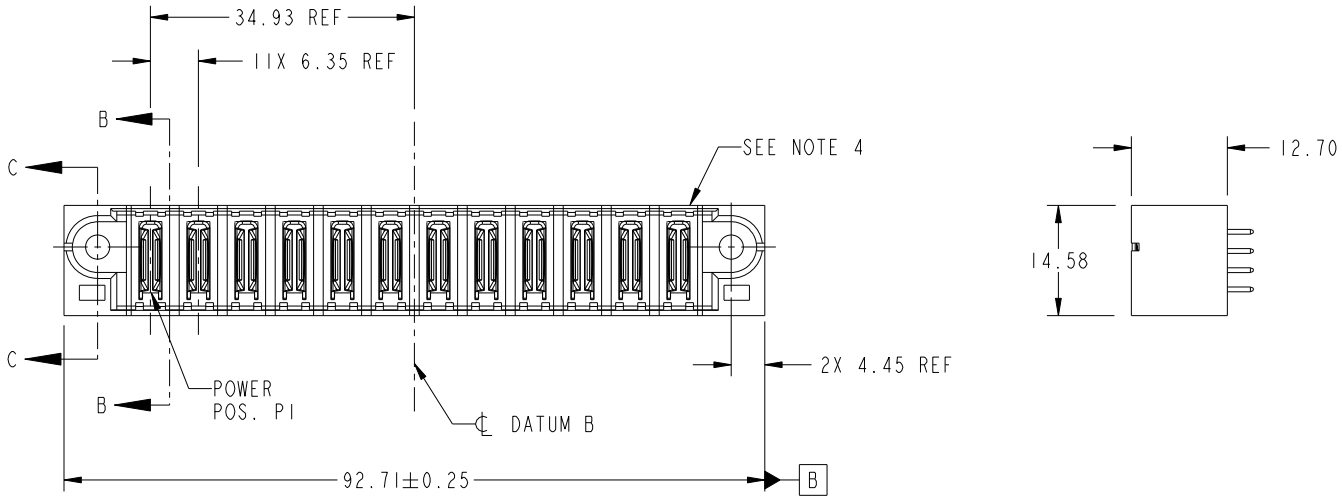


Tous droits strictement réservés. Reproduction ou communication a des tiers interdite sous quelque forme que ce soit sans autorisation écrite du propriétaire. Propriété de c.FCI. Droits de reproduction FCI.

All rights strictly reserved. Reproduction or issue to third parties in any form whatever is not permitted without written authority from the proprietor. Property of FCI. Copyright FCI.



PRODUCT NO.  51628-003-- NOTE ③	POWER												E2	
	E1	P1	P2	P3	P4	P5	P6	P7	P8	P9	P10	P11		P12
		PA	PA	PA	PA	PA	PA	PA	PA	PA	PA	PA	PA	



CODE	DIM "M" MATING LENGTH	CONTACT TYPE
PA	[N/A]	POWER

mat'l code				SEE NOTE 2		tolerances unless otherwise specified		CUSTOMER		FCI www.fciconnect.com	
ltr	ecn no.	dr	date	linear	0.X ± 0.3		COPY		title 12P VERTICAL SOLDER HEADER		
A	DG07-0398	SH	10/09/07		0.XX ± 0.13		projection				
B	DG08-0272	WD	29/25/08	angles	0.XXX ± 0.050		MM		product family PwrBlade code 213		
					0° ± 2°		scale 1:1		size A 51628-003 sheet 1 of 4		
sheet index		revision sheet		B 1	B 2	B 3	B 4				

B

B

1 | 2

Pro/E

PDM: Rev: B

STATUS: Released

Printed: Dec 20, 2010

cage code 2856

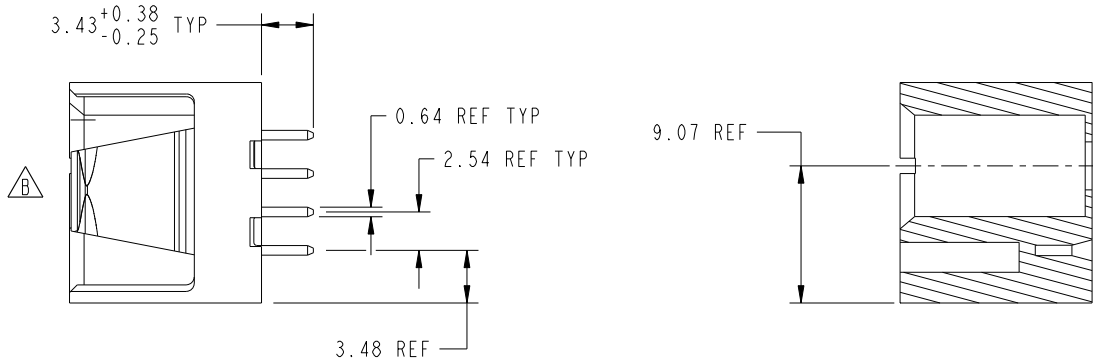
4

Tous droits strictement reserves. Reproduction ou communication a des tiers interdite sous quelque forme que ce soit sans autorisation ecrite du propriétaire. Propriete de c.FCI. Droits de reproduction FCI.

All rights strictly reserved. Reproduction or issue to third parties in any form whatever is not permitted without written authority from the proprietor. Property of FCI. Copyright FCI.



PRODUCT NUMBER  
51628-003\_\_  
NOTE 3



SECTION B-B  
SCALE 2:1

SECTION C-C  
SCALE 2:1

mat'l code				SEE NOTE 2		tolerances unless otherwise specified		CUSTOMER		FCI www.fciconnect.com	
ltr	ecn no.	dr	date	linear	0.X ±0.3		COPY		projection	title	
B					0.XX ±0.13		⊕			12P VERTICAL SOLDER HEADER	
					0.XXX ±0.050		MM			product family PwrBlade code 213	
				angles	0° ±2°		scale		size A 51628-003 sheet 2 of 4		
				dr	Sincere He	09/28/07	1:1				
				enrg	Sincere He	09/28/07					
				chr	Gary Hsieh	09/28/07					
				appd	Joseph Hsia	09/28/07					
sheet index	revision sheet										

cage code 22526

Pro/E

PDM: Rev: B

STATUS: Released

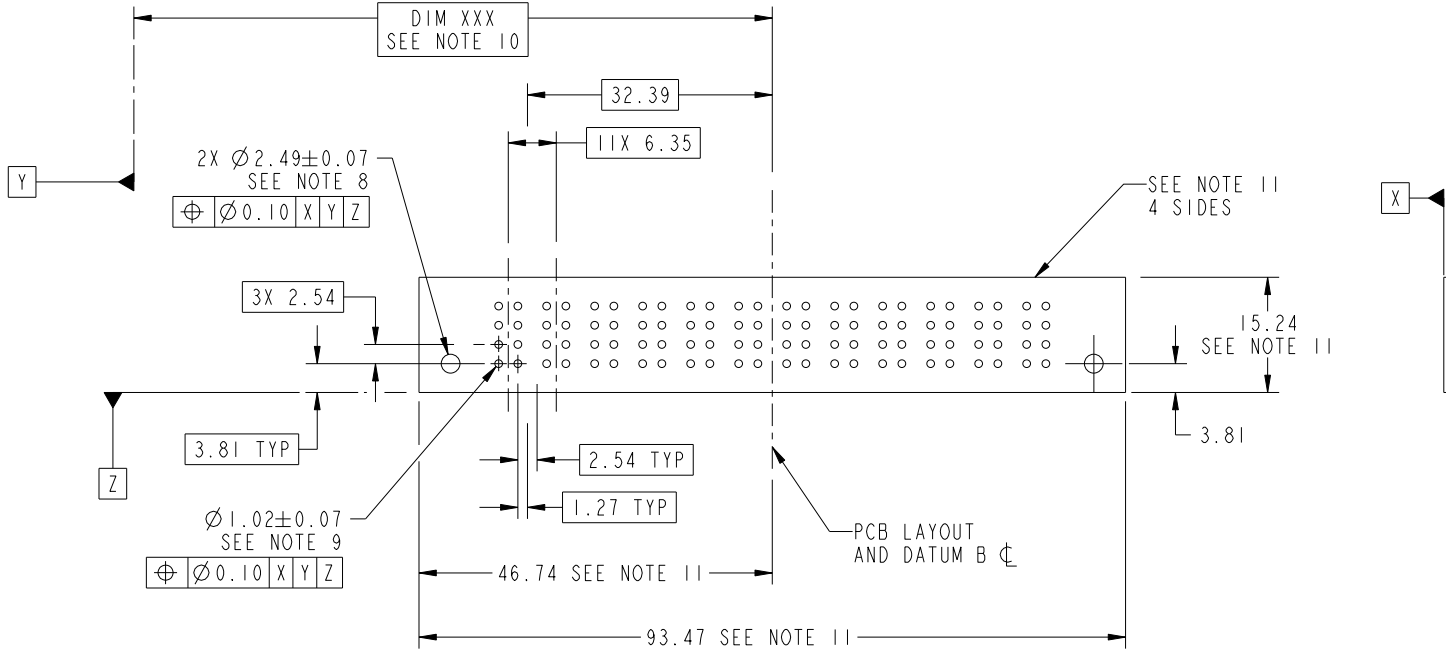
Printed: Dec 20, 2010

Tous droits strictement réservés. Reproduction ou communication a des tiers interdite sous quelque forme que ce soit sans autorisation écrite du propriétaire. Propriété de c.FCI. Droits de reproduction FCI.

All rights strictly reserved. Reproduction or issue to third parties in any form whatever is not permitted without written authority from the proprietor. Property of FCI. Copyright FCI.



PRODUCT NUMBER  
51628-003\_\_  
NOTE 3



RECOMMENDED PCB LAYOUT

mat'l code		SEE NOTE 2		tolerances unless otherwise specified		CUSTOMER		 www.fciconnect.com	
lfr	ecm no.	dr	date	linear	0.X ±0.3	COPY		title	
B					0.XX ±0.13	projection		12P	
				angles	0.XXX ±0.050			VERTICAL SOLDER HEADER	
				dr	0° ±2°			product family	
				enrg	Sincere He 09/28/07	MM		PwrBlade	
				chr	Sincere He 09/28/07	scale		code	
				appd	Gary Hsieh 09/28/07	1:1		213	
					Joseph Hsia 09/28/07			sheet	
sheet index	revision sheet							3 of 4	
								A 51628-003	

1 | 2

Pro/E

PDM: Rev: B

STATUS: Released

Printed: Dec 20, 2010

3 |

4

A

A

B

B

cage code 28516

4

Tous droits strictement reserves. Reproduction ou communication a des tiers interdite sous quelque forme que ce soit sans autorisation ecrite du proprietaire. Propriete de c.FCI. Droits de reproduction FCI.

All rights strictly reserved. Reproduction or issue to third parties in any form whatever is not permitted without written authority from the proprietor. Property of FCI. Copyright FCI.



1 | 2

3

4

PRODUCT NUMBER

51628-003\_\_  
NOTE 3

NOTES:

1. DIMENSIONS AND TOLERANCES ARE IN ACCORDANCE WITH ASME Y14.5M, 1994 UNLESS OTHERWISE SPECIFIED.

CONNECTOR NOTES:

- ② HOUSING MATERIAL: UL 94 V-0 GLASS FILLED HIGH-TEMP THERMOPLASTIC  
POWER CONTACT MATERIAL: COPPER ALLOY  
SIGNAL PIN MATERIAL: COPPER ALLOY
- △ 3. SEE ITEM 1 & 2 IN PRINT 10064183 FOR PLATING SPEC OF 51628-003 AND 51628-003LF RESPECTIVELY.
- ④ MANUFACTURER'S NAME, P/N, AND DATE CODE TO APPEAR ON THIS SURFACE.
- 5. PRODUCT SPECIFICATION GS-12-149.  
APPLICATION SPECIFICATION BUS-20-067.
- 6. PACKAGED IN TRAYS.
- PCB NOTES:
- 7. ALL HOLE DIAMETERS ARE FINISHED HOLE SIZE.
- 8. MOUNTING HOLES, WHERE APPLICABLE, ARE UNPLATED.
- ⑨  $\varnothing 1.151 \pm 0.025$  DRILLED HOLES PLATED WITH  
0.008 MIN SnPb OR Sn OVER .001 [0.03]  
TO 0.08 Cu PLATING TO ACHIEVE  
 $\varnothing 1.02 \pm .07$  HOLE.
- ⑩ "DIM XXX" TO BE DETERMINED BY THE CUSTOMER.
- ⑪ CONNECTOR KEEP-OUT ZONE.
- 12. A/B SYMBOL WILL BE NEXT TO ANY DIMENSION, VIEW, OR NOTE WHICH HAS BEEN MODIFIED WITH THE CURRENT DRAWING REVISION.

A

A

B

B

mat'l code				SEE NOTE 2		tolerances unless otherwise specified		CUSTOMER		FCI		www.fciconnect.com	
ltr	ecn no.	dr	date	linear	0.X ±0.3		COPY		projection	title			
B					0.XX ±0.13		⊕			12P			
					0.XXX ±0.050		MM			VERTICAL SOLDER HEADER			
				angles	0° ±2°		scale		product family		code		
				dr	Sincere He	09/28/07	1:1		PwrBlade		213		
				enr	Sincere He	09/28/07	A		size		sheet		
				chr	Gary Hsieh	09/28/07	51628-003		dwg no		4 of 4		
				appd	Joseph Hsia	09/28/07							
sheet index		revision sheet											

1 | 2

Pro/E

PDM: Rev:B

STAT: Released

Printed: Dec 20, 2010

cage code 28516

4