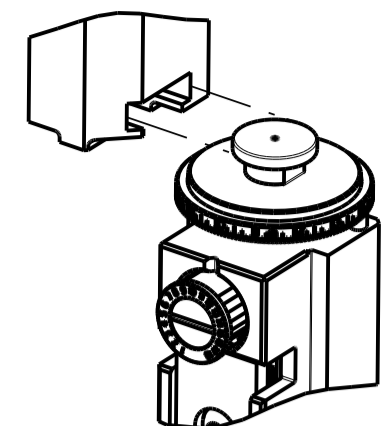


PART NUMBER	REVISION	DESCRIPTION	FEED TYPE
2151526-1	L	FINE CRIMP HEIGHT ADJUST	MECHANICAL
2151526-2	L	FINE CRIMP HEIGHT ADJUST	PNEUMATIC
5-2151526-1	L	SEAL STRIPPER CRIMPER TERMINATING UNIT	MECHANICAL
5-2151526-2	L	SEAL STRIPPER CRIMPER TERMINATING UNIT	PNEUMATIC
7-2151526-1	L	MECHANICAL AND CRIMP TOOLING KIT	MECHANICAL
7-2151526-2	L	PNEUMATIC AND CRIMP TOOLING KIT	PNEUMATIC
7-2151526-7	J	CRIMP TOOLING KIT	-

ATLANTIC VERSION TERMINATOR INTERFACE ADAPTER



APPLICATOR DATA		
CRIMP	SIZE	TYPE
WIRE	0.99 mm [.039]	F
INSUL	1.52 mm [.060]	F

APPLICATOR INSTRUCTIONS  
408-35042

TERMINAL DATA: HIROSE TERMINAL HIROSE CRIMP SPECIFICATION			
TERMINAL NAME: DF11 SERIES, SOCKET			
WIRE STRIP LENGTH	TERMINAL INSULATION DIAMETER RANGE		
1.70-2.30 mm [.067-.091 IN]	Ø0.90-1.45 mm [.035-.057 IN]		
TERMINAL APPLICATION SPECIFICATION	TAD-P-0506 Rev 1	AT9106	
TERMINALS APPLIED			
TE TERMINAL	HIROSE TERMINAL	TE TERMINAL	HIROSE TERMINAL
286617-1	DF11-2428-SCF	286617-3	DF11-2428-SCFA
286617-2	DF11A-2428-SCF		

WIRE SIZE	CRIMP HEIGHT mm [INCH]	CRIMP HEIGHT REFERENCE SETTING
24 AWG	0.63 +/- 0.03 [.025 +/- .001]	7.2
26 AWG	0.59 +/- 0.03 [.023 +/- .001]	7.6
28 AWG	0.55 +/- 0.03 [.022 +/- .001]	8.1

- △ RECOMMENDED SPARE PARTS
- △ REFER TO SUPPLIED INSTRUCTION SHEET FOR CLEANING, LUBRICATION AND STORAGE OF APPLICATOR.
- △ APPLY PART NUMBER 1-23419-5 LOCTITE TO THREADS OF ITEM 180. APPLY PART NUMBER 2-23419-6 LOCTITE TO THREADS OF ITEM 242.
- △ CRIMP HEIGHT REFERENCE SETTING WAS THE SETTING USED WHEN THE APPLICATOR WAS QUALIFIED AT THE FACTORY. ADJUSTMENT MAY BE NECESSARY WHEN RUNNING APPLICATOR IN THE FIELD.
- 5. UNLESS SPECIFIED OTHERWISE TORQUE VALUES SHALL BE USED PER DOCUMENT 101-35000.
- △ TERMINAL LUBRICANT IS RECOMMENDED.

\*WARNING  
ON INSTALLATION, SET WIRE DISC TO CRIMP HEIGHT REFERENCE SETTING FOR LARGEST WIRE SIZE. CRIMP HEIGHT REFERENCE SETTINGS GREATER THAN THE VALUE SHOWN MAY CAUSE DAMAGE TO THE CRIMP TOOLING, REFER TO THE INSTRUCTION SHEET FOR PROPER SETUP AND ADJUSTMENTS.

ATLANTIC VERSION  
Shown on sheets 1 of 4 & 2 of 4  
(Pacific version shown on sheets 3 of 4 & 4 of 4)

LOC	DIST	REV	DATE	BY	CHK	APPV
A	66	J	14JAN2020	JAH	TE	
		K	13MAY2020	TB	GB	
		L	16APR2021	MZ	YY	

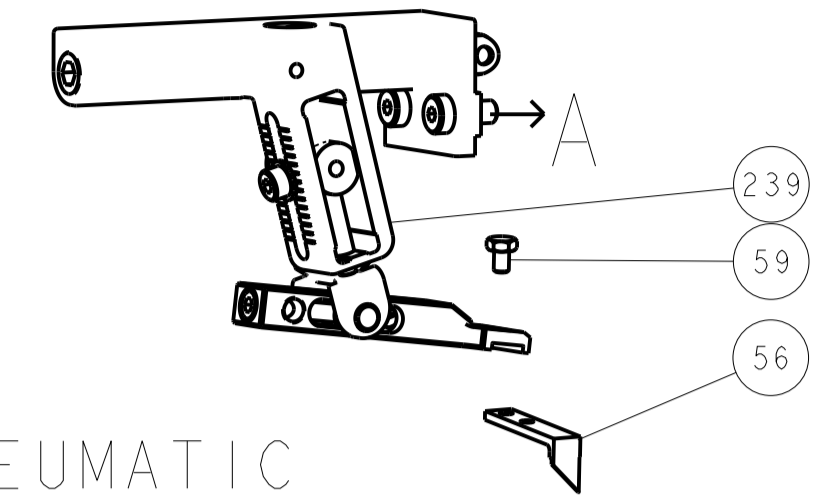
ITEM NO	DESCRIPTION	ITEM NO
293	RAM ASSEMBLY, SF ATLANTIC	
292	APPLICATOR BASIC ASSEMBLY, SF	
286	DEPRESSOR, WIRE	
248	FEED CAM, AIR FEED	
244	CAM, SNAIL, INSULATION ADJUSTMENT	
243	WASHER, WAVE SPRING, CREST-TO-CREST	
242	RETAINER, INSULATION DIAL	
241	SCR, SKT HD CAP M3 X 4.0	
239	MECHANICAL FEED ASSEMBLY	
238	AIR FEED MODULE	
182	STRIPPER, SIDE FEED	
181	NUT, HEX, REG, RoHS, M3.5	
180	STANDOFF, HOLD-DOWN	
177	PIN, SLOTTED SPRING 3.0 X 20.0	
176	SPRING, COMPRESSION	
175	GUIDE PIN, HOLDDOWN	
174	GUIDE PIN, HOLDDOWN	
164	COUNTER, MAGNETIC	
113	ASSY, LUBRICATOR, SIDE FEED	
99	SCREW, LOCKING	
98	POST, LOCKING	
82	SPACER, PRECISION	
71	DOCUMENTATION PACKAGE	
70	DEPRESSOR, WIRE	
67	TAG, IDENTIFICATION	
66	SCREW, DRIVE, RH, RoHS, 2 x .188	
60	SCR, SKT HD CAP, RoHS, M4 X 8.0	
59	SCR, HEX HD CAP, M4 X 6.0	
56	PAWL, FEED	
54	SCR, SKT HD CAP, RoHS, M4 X 12.0	
49	SCR, SKT HD CAP M4 X 6.0	
48	FEED CAM, PRE FEED	
47	FEED CAM, POST FEED	
46	APPLICATOR BASIC ASSEMBLY, SF	
44	RAM ASSEMBLY, SF ATLANTIC	
41	SCR, BHSC, RoHS (M8 X 25)	
34	SUPPORT, TERMINAL	
33	SCR, BHSC, RoHS (M4 X 20)	
30	SPACER, CYLINDRICAL, STRIP GUIDE	
29	ASSEMBLY, STRIP GUIDE	
24	STRIP GUIDE	
21	SCR, SKT HD CAP, RoHS, M4 X 8.0	
20	WASHER, FLAT, REG M4	
19	STRIPPER, SIDE FEED	
13	INSERT, SHEAR	
12	SPRING, COMPRESSION	
11	SCR, SKT HD CAP, RoHS, M4 X 10	
10	SHEAR HOLDER, FRONT	
9	FLOATING SHEAR, FRONT	
8	ANVIL, COMBINATION	
7		
6		
5	DEPRESSOR, SHEAR	
4	BLOCK, CRIMPER SPACER	
3	CRIMPER, INSULATION F	
2		
1	CRIMPER, WIRE PREMIUM	

ITEM NO	DESCRIPTION	ITEM NO
-77	-72-71-52-51-2-1	PART NO
		DESCRIPTION

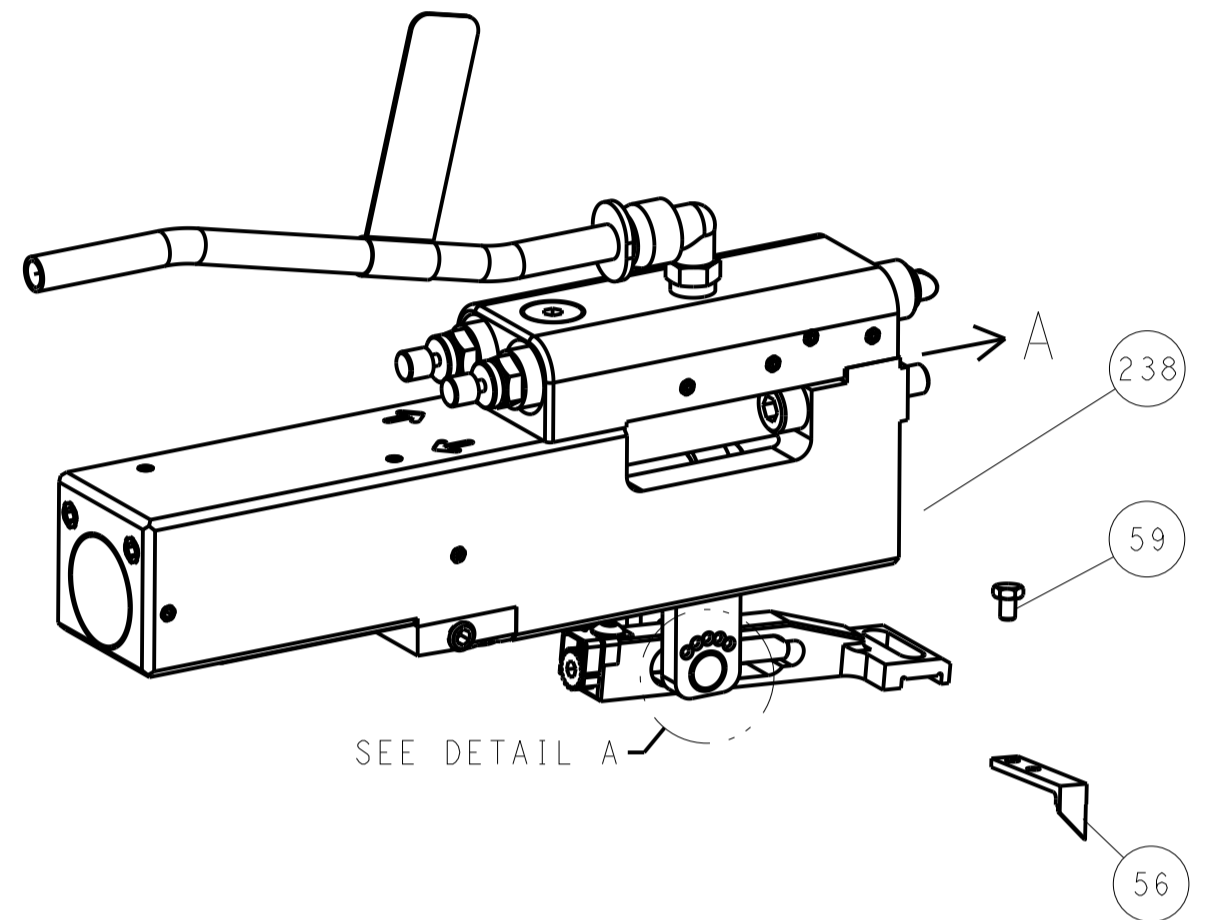
DATE	12MAR2014	CHK	12MAR2014	APPV	12MAR2014
TE Connectivity					
Harrisburg, PA 17105-3608					
NAME					
OCEAN 2.0 Side Feed Applicator					
SIZE					
A   00779   2151526					
Customer Accessible Production Drawing					
SCALE 1:2 SHEET 1 OF 4 REV L					

LOC		DIST		REVISIONS			
A	66	P	LTM	DESCRIPTION	DATE	DWN	APVD
		-	-	SEE SHEET 1	-	-	-

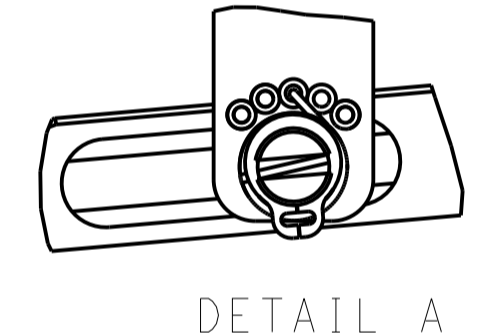
# FEED TYPE MECHANICAL



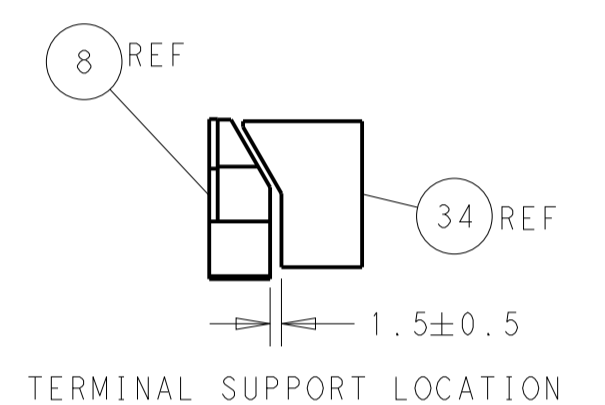
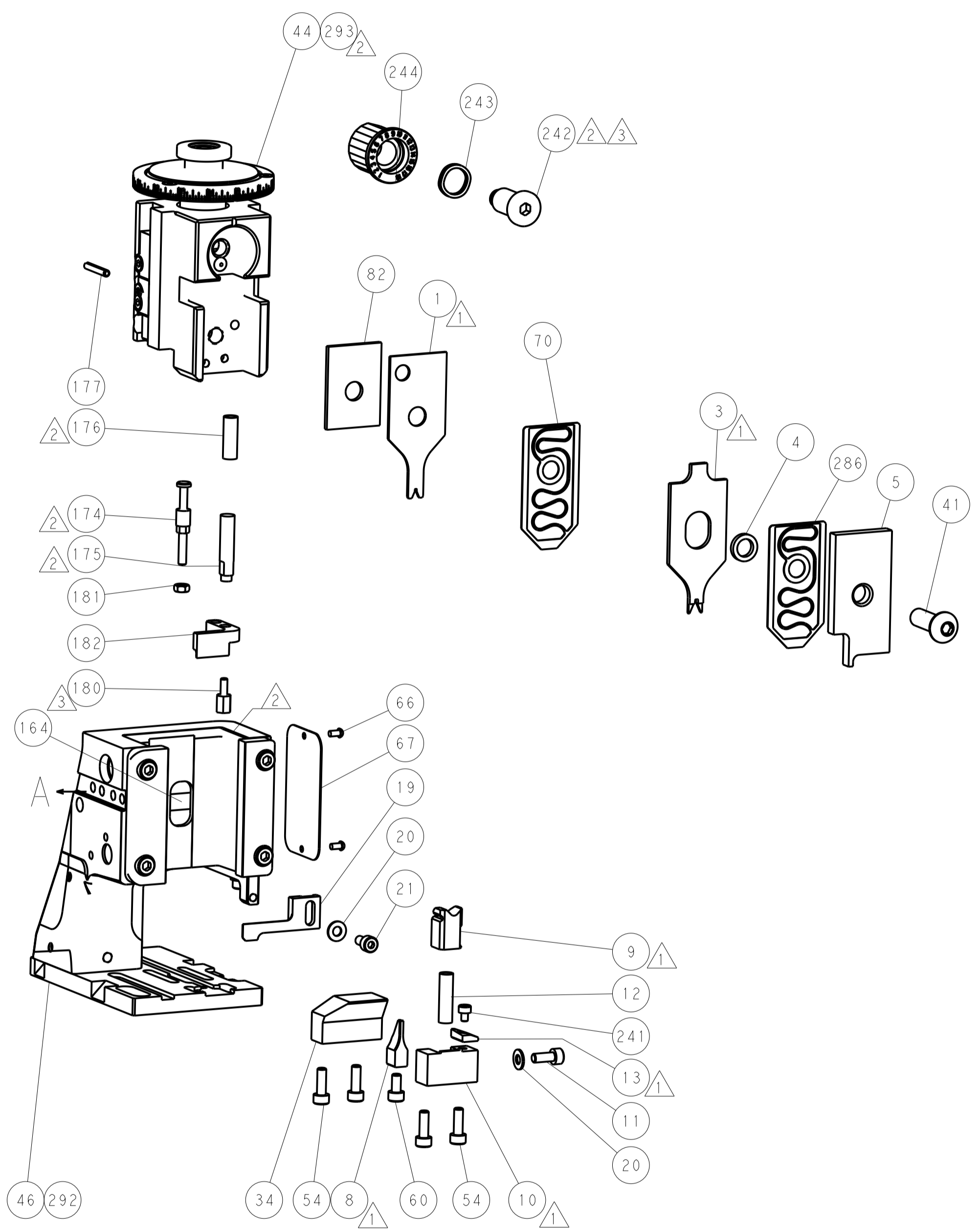
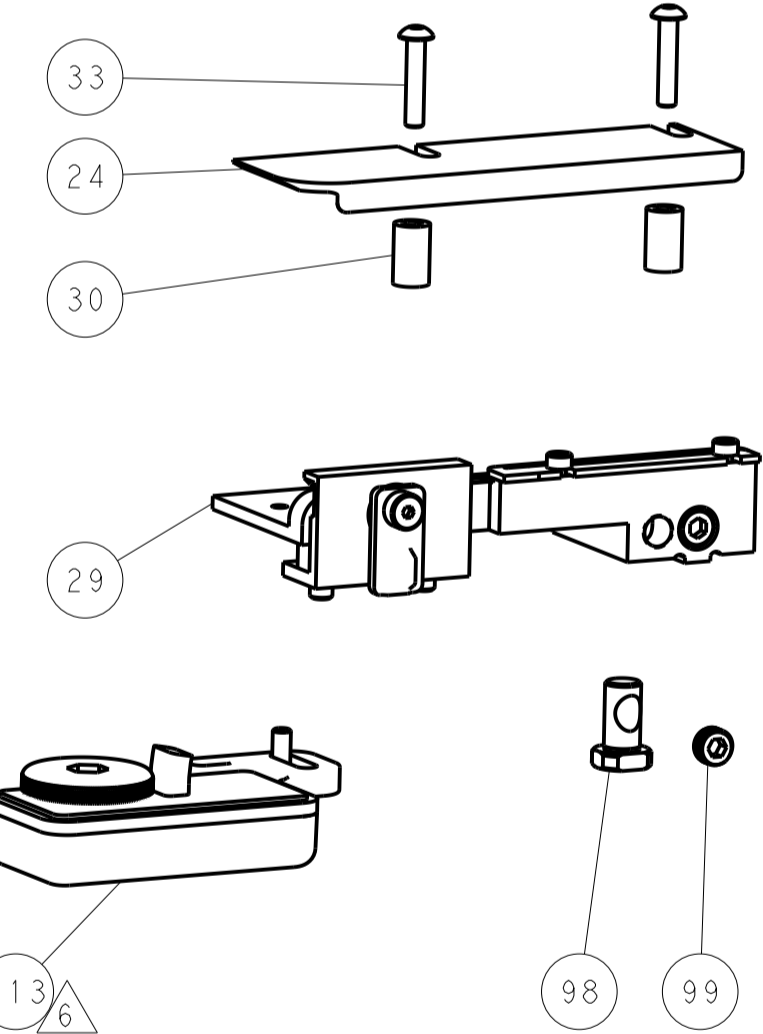
## PNEUMATIC



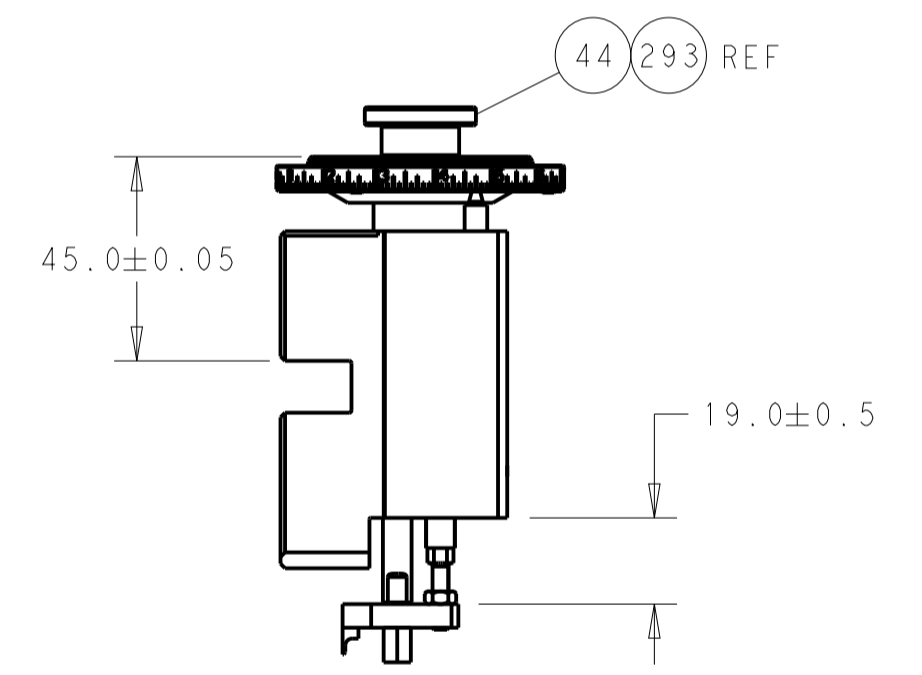
## FEED SPRING SETTING POSITION (SHOWN FROM REAR SIDE)



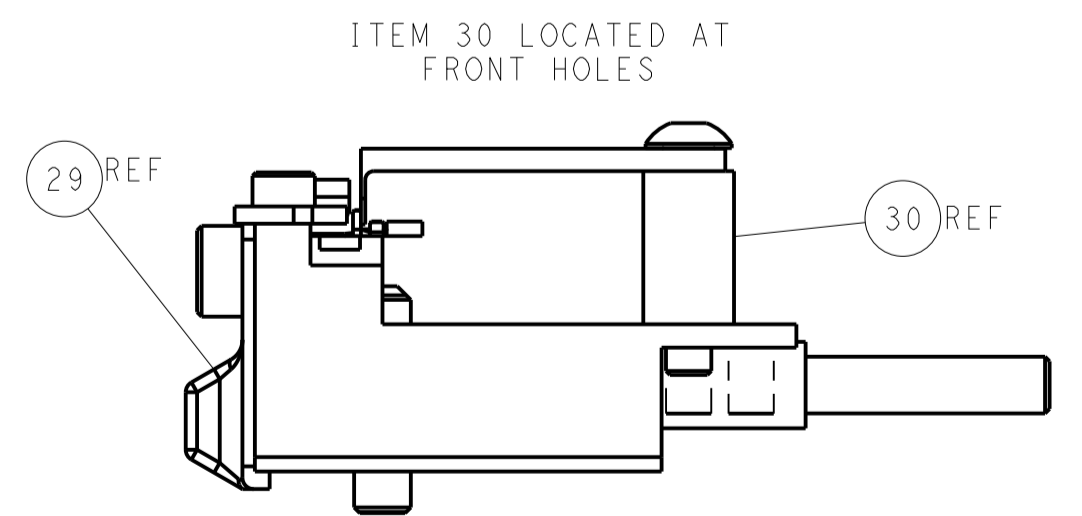
DETAIL A



TERMINAL SUPPORT LOCATION

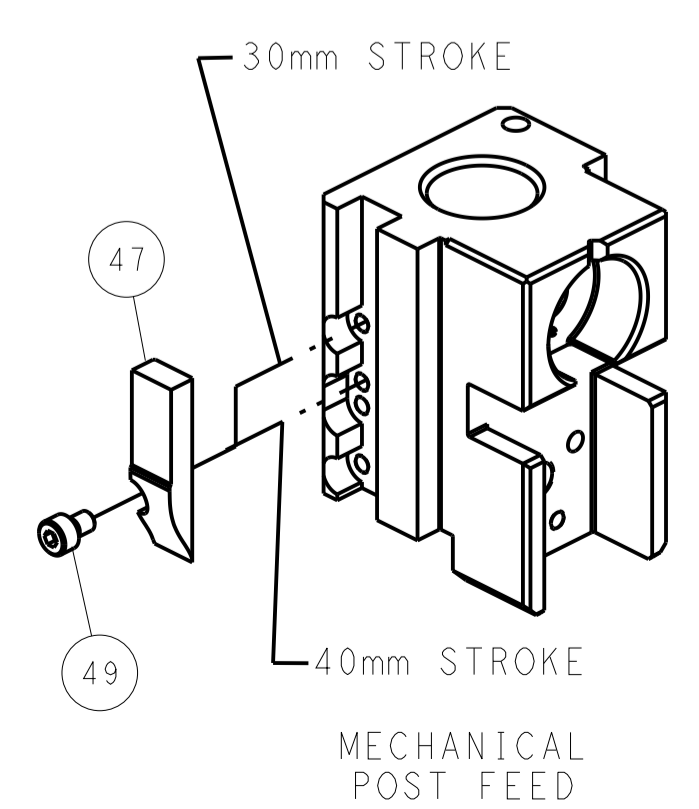


RAM AND HOLD DOWN SET-UP

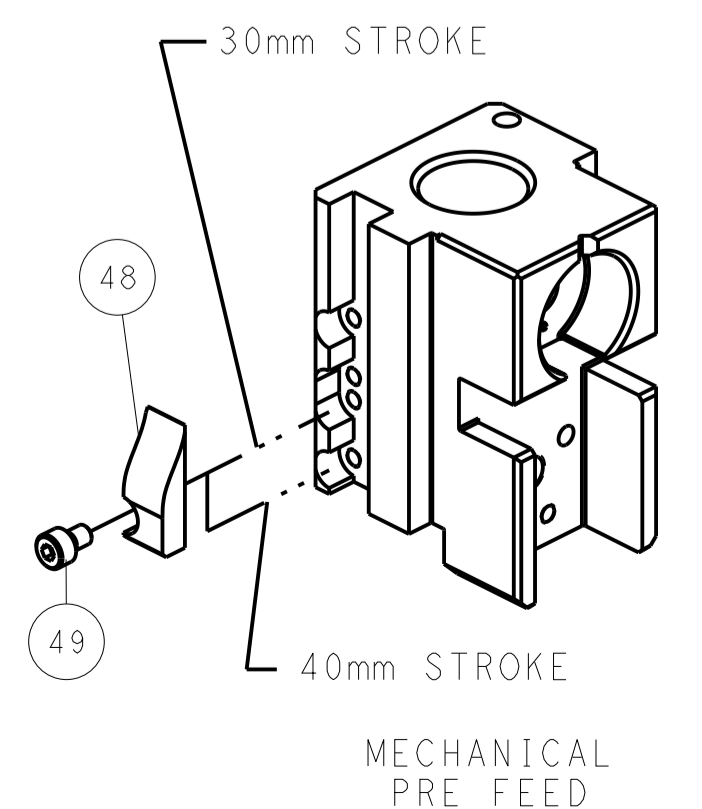


FEED TRACK POSITION GUIDE BY INSULATION BARREL

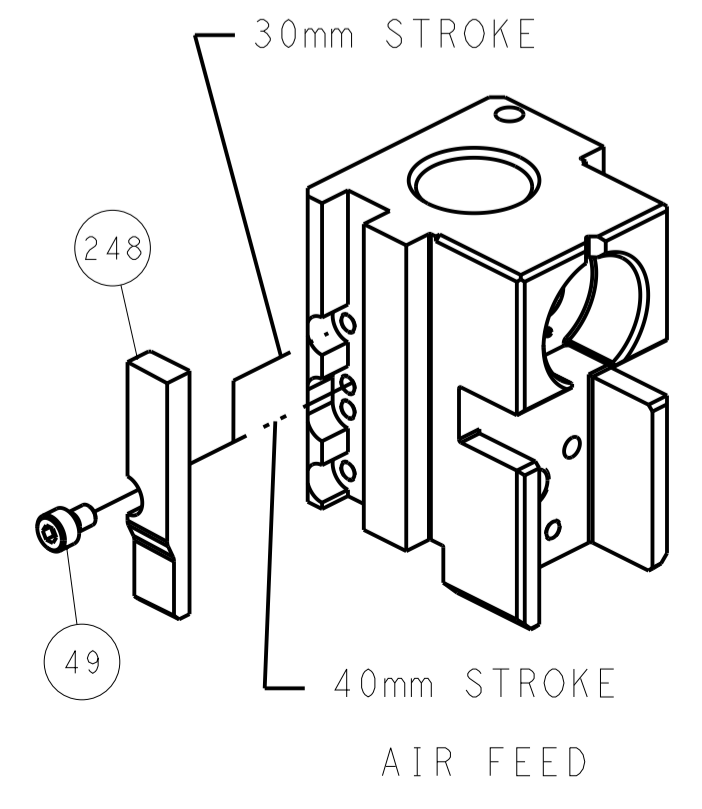
# CAM POSITIONS



MECHANICAL POST FEED



MECHANICAL PRE FEED



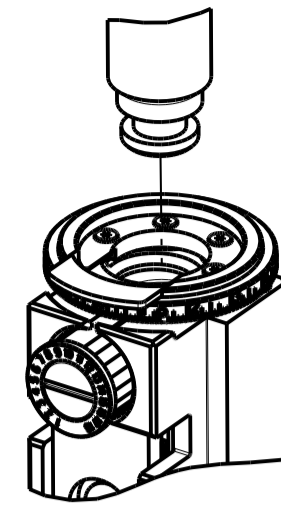
AIR FEED

**ATLANTIC VERSION**  
 Shown on sheets 1 of 4 & 2 of 4  
 (Pacific version shown on sheets 3 of 4 & 4 of 4)

DIMENSIONS:		TOLERANCES UNLESS OTHERWISE SPECIFIED:		DWN	12MAR2014	TE Connectivity Harrisburg, PA 17105-3608
mm	0 PLC ±	1 PLC ±	2 PLC ±	CHK	12MAR2014	
	3 PLC ±	4 PLC ±	5 PLC ±	APVD	12MAR2014	NAME
	6 PLC ±	7 PLC ±	8 PLC ±			OCEAN 2.0 Side Feed Applicator
	9 PLC ±	10 PLC ±	11 PLC ±			SIZE
	12 PLC ±	13 PLC ±	14 PLC ±			A1 00779 ©=2151526
	15 PLC ±	16 PLC ±	17 PLC ±			RESTRICTED TO
	18 PLC ±	19 PLC ±	20 PLC ±			Customer Accessible Production Drawing
	21 PLC ±	22 PLC ±	23 PLC ±			SCALE
	24 PLC ±	25 PLC ±	26 PLC ±			1:2 SHEET 2 OF 4 REV L

PART NUMBER	REVISION	DESCRIPTION	FEED TYPE
2-2151526-1	L	FINE CRIMP HEIGHT ADJUST	MECHANICAL
2-2151526-2	L	FINE CRIMP HEIGHT ADJUST	PNEUMATIC
7-2151526-7	J	CRIMP TOOLING KIT	-

PACIFIC VERSION TERMINATOR  
INTERFACE ADAPTER



APPLICATOR DATA		
CRIMP	SIZE	TYPE
WIRE	0.99 mm [.039]	F
INSUL	1.52 mm [.060]	F

APPLICATOR INSTRUCTIONS  
408-35042

TERMINAL DATA: HIROSE TERMINAL HIROSE CRIMP SPECIFICATION			
TERMINAL NAME: DF11 SERIES, SOCKET			
WIRE STRIP LENGTH 1.70-2.30 mm [.067-.091 IN]		TERMINAL INSULATION DIAMETER RANGE Ø0.90-1.45 mm [.035-.057 IN]	
TERMINAL APPLICATION SPECIFICATION TAD-P-0506 Rev 1			AT9106
TERMINALS APPLIED			
TE TERMINAL	HIROSE TERMINAL	TE TERMINAL	HIROSE TERMINAL
286617-1	DF11-2428-SCF	286617-3	DF11-2428-SCFA
286617-2	DF11A-2428-SCF		

WIRE SIZE	CRIMP HEIGHT mm [INCH]	CRIMP HEIGHT REFERENCE SETTING
24 AWG	0.63+/-0.03 [.025+/-0.001]	7.2
26 AWG	0.59+/-0.03 [.023+/-0.001]	7.6
28 AWG	0.55+/-0.03 [.022+/-0.001]	8.1

- RECOMMENDED SPARE PARTS
- REFER TO SUPPLIED INSTRUCTION SHEET FOR CLEANING, LUBRICATION AND STORAGE OF APPLICATOR.
- APPLY PART NUMBER 2-23419-6 LOCTITE TO THREADS OF ITEM 242.
- CRIMP HEIGHT REFERENCE SETTING WAS THE SETTING USED WHEN THE APPLICATOR WAS QUALIFIED AT THE FACTORY. ADJUSTMENT MAY BE NECESSARY WHEN RUNNING APPLICATOR IN THE FIELD.
- UNLESS SPECIFIED OTHERWISE TORQUE VALUES SHALL BE USED PER DOCUMENT 101-35000.
- TERMINAL LUBRICANT IS RECOMMENDED.

**\*WARNING**  
ON INSTALLATION, SET WIRE DISC TO CRIMP HEIGHT REFERENCE SETTING FOR LARGEST WIRE SIZE. CRIMP HEIGHT REFERENCE SETTINGS GREATER THAN THE VALUE SHOWN MAY CAUSE DAMAGE TO THE CRIMP TOOLING, REFER TO THE INSTRUCTION SHEET FOR PROPER SETUP AND ADJUSTMENTS.

PACIFIC VERSION  
Shown on sheets 3 of 4 & 4 of 4  
(Atlantic version shown on sheets 1 of 4 & 2 of 4)

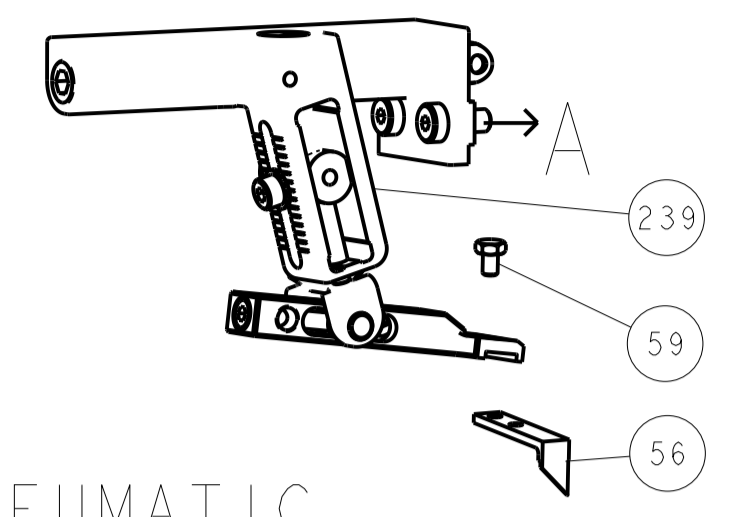
LOC	DIST	REV	DATE	BY	APPV
A	66				

REV	DATE	BY	APPV	DESCRIPTION	ITEM NO
-	1	1		2-2119791-2 DEPRESSOR, WIRE	286
-	1	1		2119082-4 CAM, SNAIL, INSULATION ADJUSTMENT	244
-	1	1		2079764-1 WASHER, WAVE SPRING, CREST-TO-CREST	243
-	1	1		2119083-1 RETAINER, INSULATION DIAL	242
-	1	1		7-18023-7 SCR, SKT HD CAP M3 X 4.0	241
-	-	1		2119580-1 MECHANICAL FEED ASSEMBLY	239
-	1	-		2844940-1 AIR FEED MODULE	238
-	REF	REF		994970-2 COUNTER, MAGNETIC	164
-	1	-		2119641-2 FEED CAM, AIR FEED	151
-	1	1		2168083-8 SCR, SKT HD CAP, RoHS, M4 X 16	144
-	4	4		2168083-9 SCR, SKT HD CAP, RoHS, M4 X 20	143
-	-	1		2119653-2 FEED CAM, POST FEED	142
-	1	1		1-1803583-0 APPLICATOR BASIC ASSEMBLY, SF	141
-	1	1		1803516-1 RAM ASSEMBLY, SF PACIFIC	140
-	1	1		2119955-1 ASSY, LUBRICATOR, SIDE FEED	113
-	1	1		2844908-1 SCREW, LOCKING	99
-	1	1		2844907-1 POST, LOCKING	98
-	1	1		1-1803078-2 SPACER, PRECISION	82
-	1	1		1803607-3 DOCUMENTATION PACKAGE	71
-	1	1		2-2119791-2 DEPRESSOR, WIRE	70
-	1	1		2119740-1 TAG IDENTIFICATION	67
-	2	2		2168078-1 SCREW, DRIVE, RH, RoHS, 2 x .188	66
-	1	1		5-18022-5 SCR, HEX HD CAP, M4 X 6.0	59
-	1	1		1338685-1 PAWL, FEED	56
-	1	2		18023-9 SCR, SKT HD CAP M4 X 6.0	49
-	-	1		2119652-1 FEED CAM, PRE FEED	48
-	1	1		1803602-1 SCR, BHSC, RoHS (M8 X 25)	41
-	1	1		2-1752356-7 SUPPORT, TERMINAL	34
-	2	2		2079383-5 SCR, BHSC, RoHS (M4 X 20)	33
-	2	2		2-2844962-3 SPACER, CYLINDRICAL, STRIP GUIDE	30
-	1	1		2844992-1 ASSEMBLY, STRIP GUIDE	29
-	1	1		1320928-2 STRIP GUIDE	24
-	1	1		2168083-2 SCR, SKT HD CAP, RoHS, M4 X 8.0	21
-	2	2		1-18028-2 WASHER, FLAT, REG M4	20
-	1	1		2119533-3 STRIPPER, SIDE FEED	19
-	1	1		2119806-1 INSERT, SHEAR	13
-	1	1		3-22280-3 SPRING, COMPRESSION	12
-	1	1		1-2168083-0 SCR, SKT HD CAP, RoHS, M4 X 10	11
-	1	1		2119805-1 SHEAR HOLDER, FRONT	10
-	1	1		1803095-6 FLOATING SHEAR, FRONT	9
-	1	1		1803336-7 ANVIL, COMBINATION	8
-	-	-		-	7
-	-	-		-	6
-	1	1		2119757-1 DEPRESSOR, SHEAR	5
-	1	1		5-238011-5 BLOCK, CRIMPER SPACER	4
-	1	1		1-1803326-1 CRIMPER, INSULATION F	3
-	-	-		-	2
-	1	1		1803323-5 CRIMPER, WIRE PREMIUM	1
-	77	-22	-21	PART NO	
-				DESCRIPTION	ITEM NO

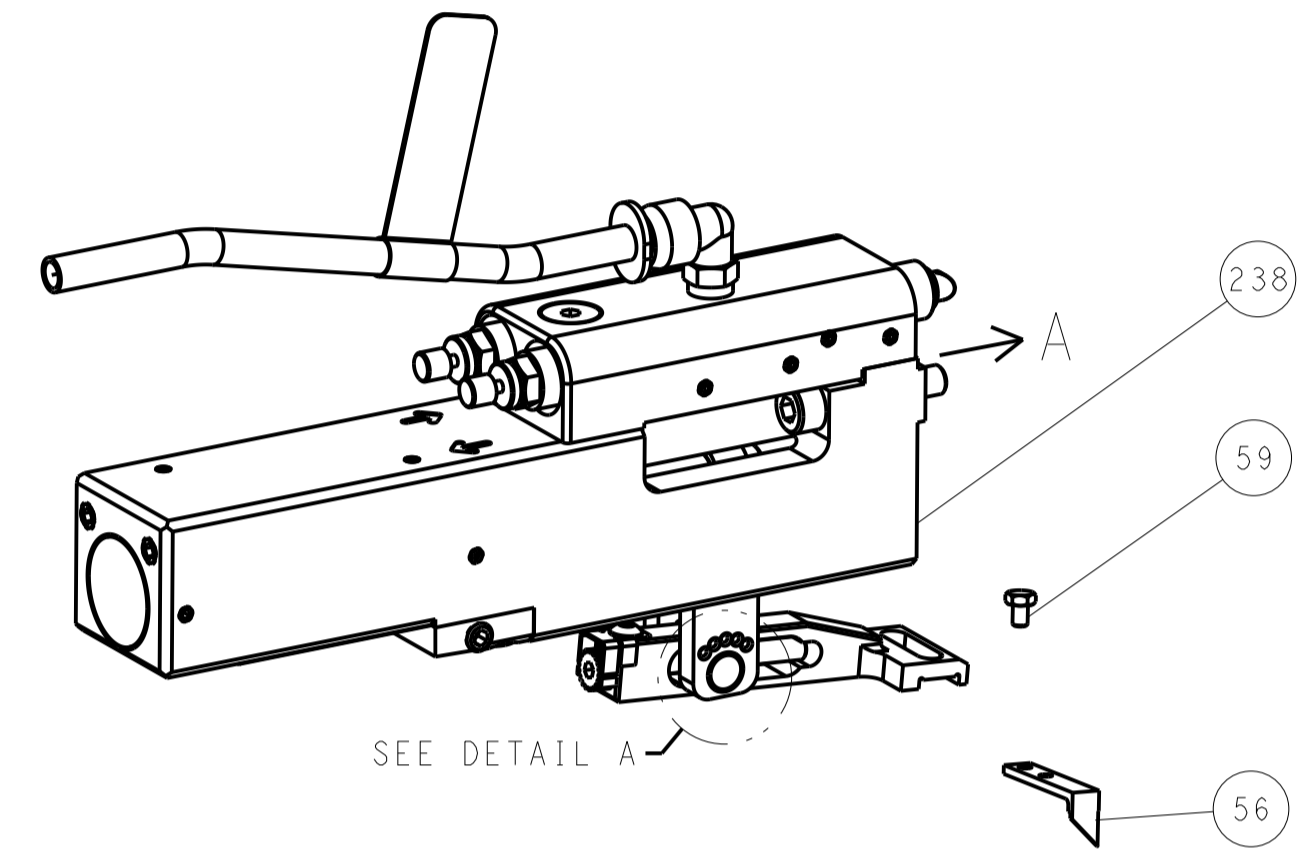
DIMENSIONS: mm		TOLERANCES UNLESS OTHERWISE SPECIFIED:		DATE: 12MAR2014	TE Connectivity
0 PLC	±	0.15	±	CHK: 12MAR2014	Harrisburg, PA 17105-3608
1 PLC	±	0.25	±	APVD: 12MAR2014	
2 PLC	±	0.38	±		
3 PLC	±	0.51	±		
4 PLC	±	0.64	±		
ANGLES	±		±		
MATERIAL		FINISH		PRODUCT SPEC	
				APPLICATION SPEC	
				SIZE	CAGE CODE DRAWING NO
				WTG	A1 00779 C=2151526
				RESTRICTED TO	
				Customer Accessible Production Drawing	SCALE: 1:2 SHEET 3 OF 4 REV L

LOC		DIST		REVISIONS			
A	66	P	LTM	DESCRIPTION	DATE	DWN	APVD
		-	-	SEE SHEET 1	-	-	-

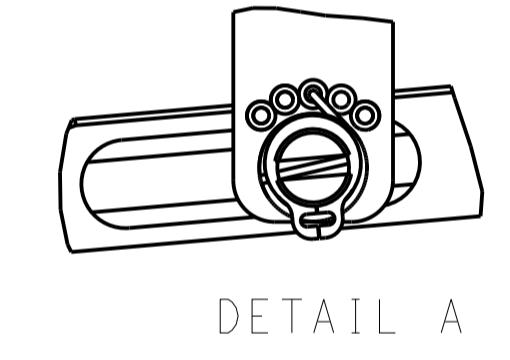
# FEED TYPE MECHANICAL



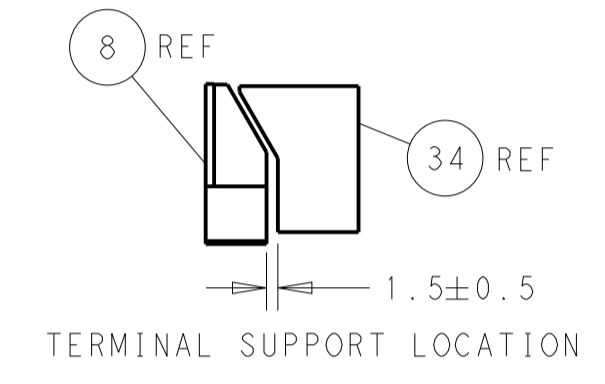
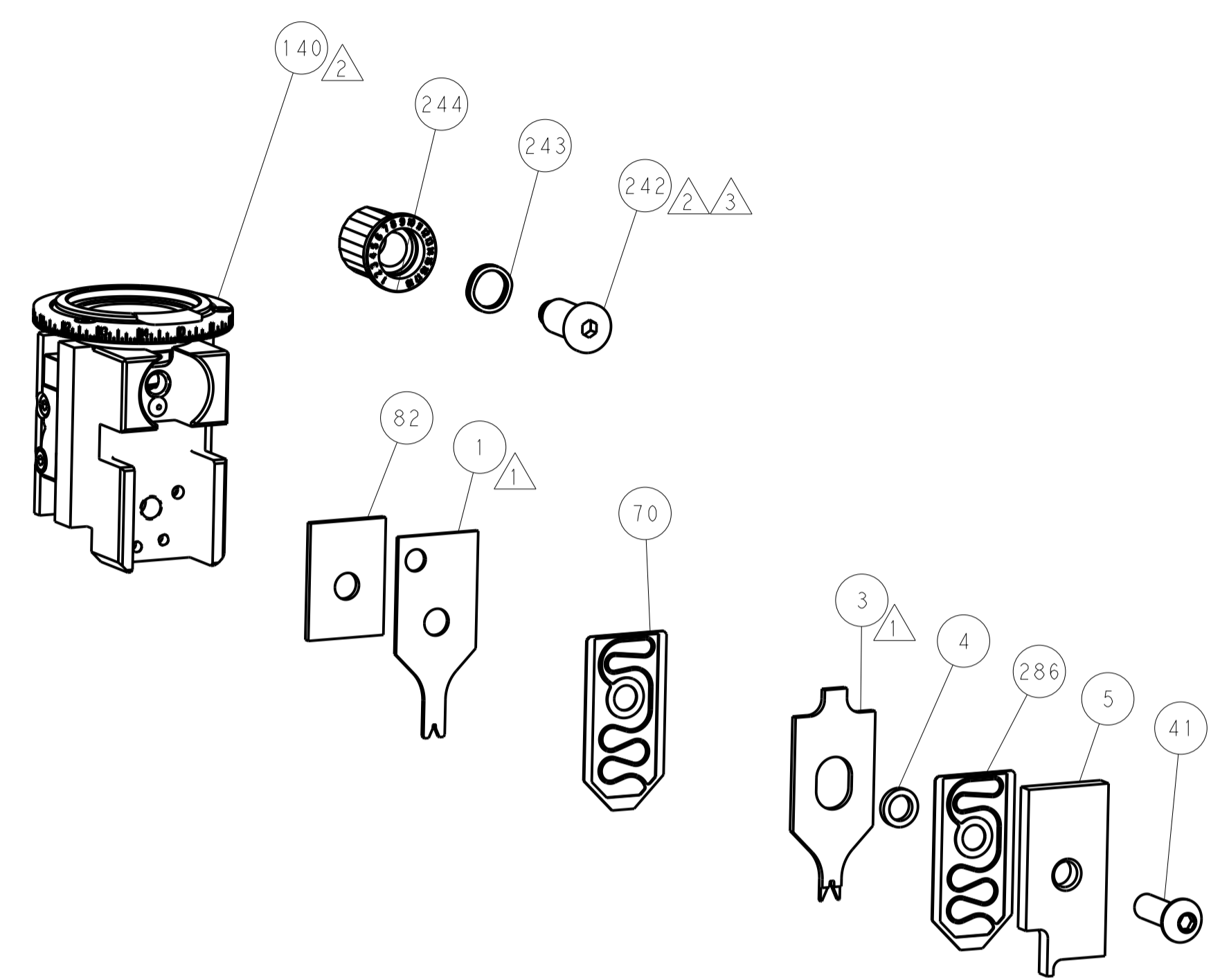
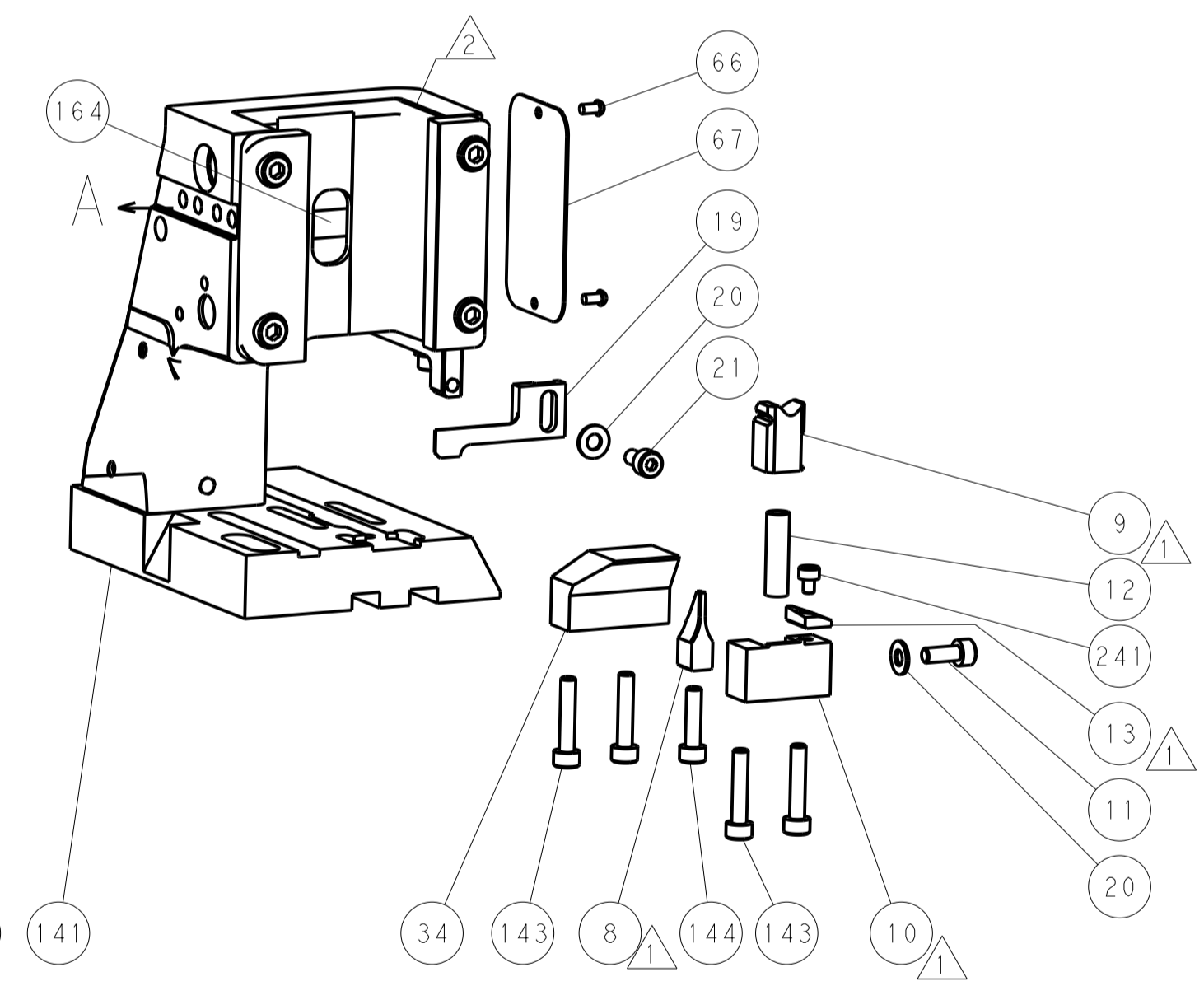
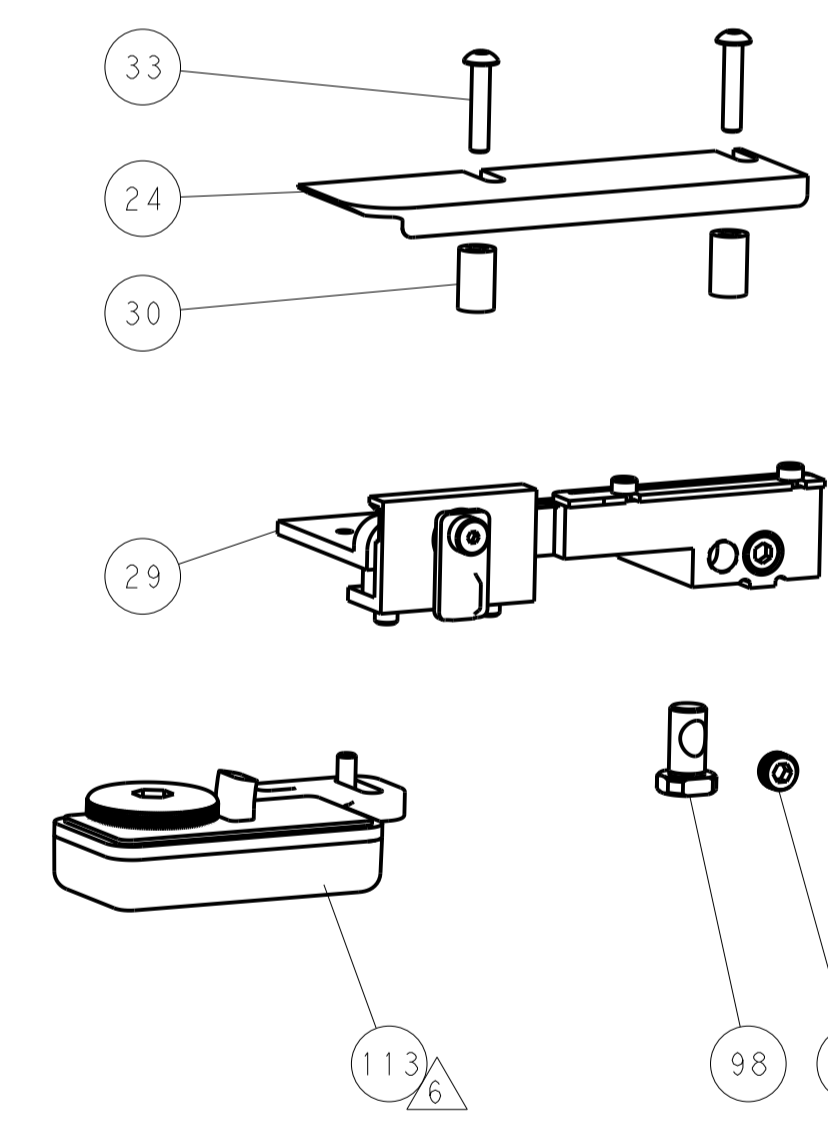
## PNEUMATIC



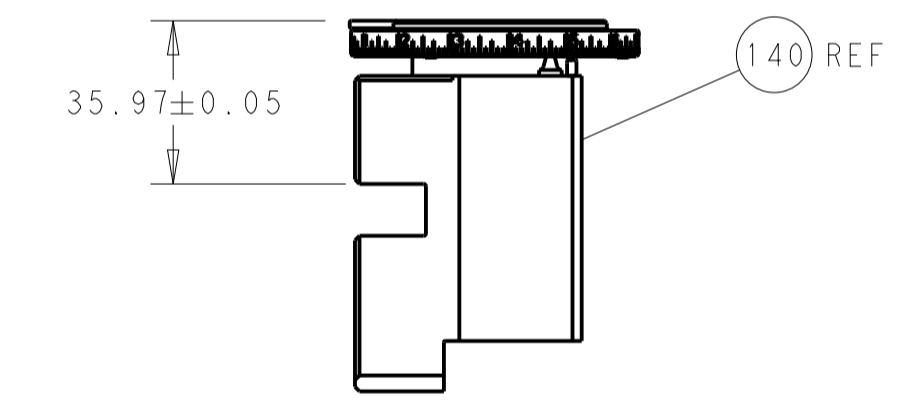
## FEED SPRING SETTING POSITION (SHOWN FROM REAR SIDE)



DETAIL A

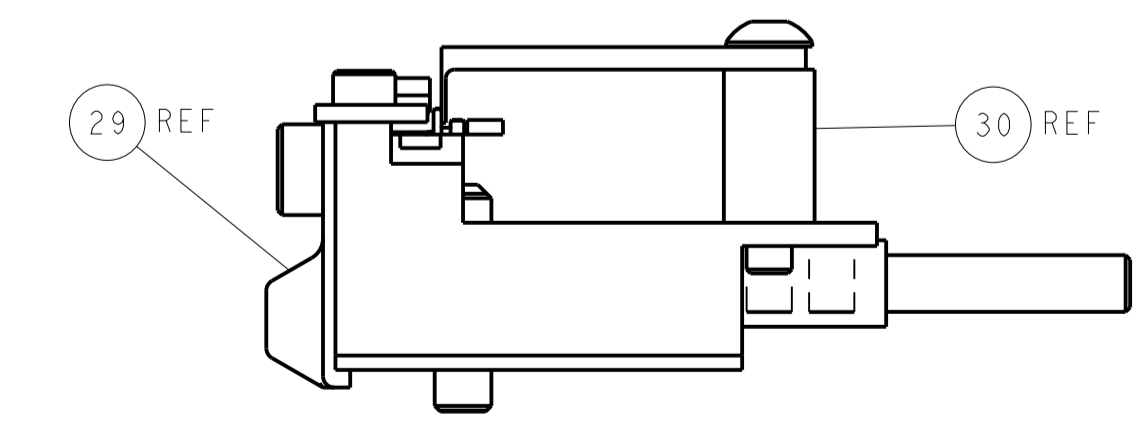


TERMINAL SUPPORT LOCATION



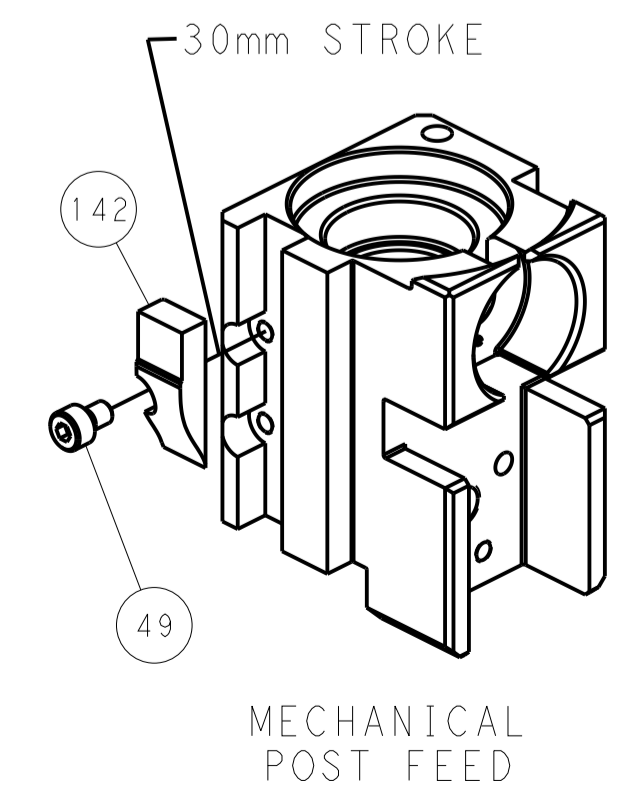
RAM SET-UP

ITEM 30 LOCATED AT FRONT HOLES

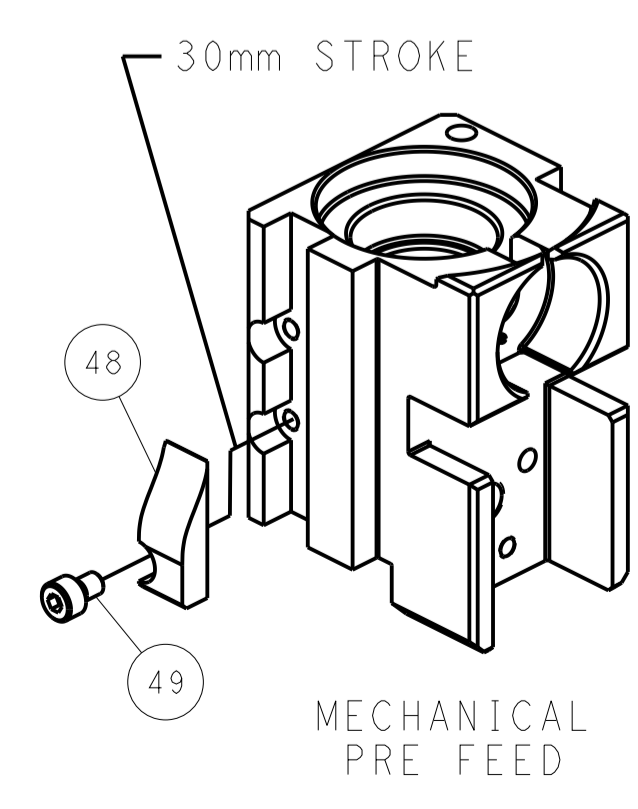


FEED TRACK POSITION GUIDE BY INSULATION BARREL

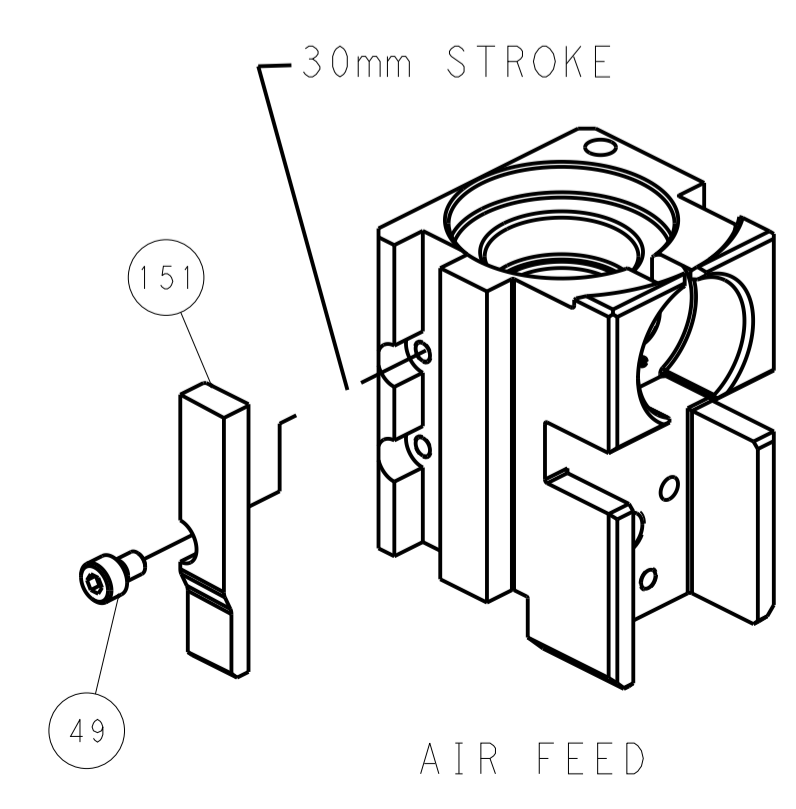
# CAM POSITIONS



MECHANICAL POST FEED



MECHANICAL PRE FEED



AIR FEED

**PACIFIC VERSION**  
 Shown on sheets 3 of 4 & 4 of 4  
 (Atlantic version shown on sheets 1 of 4 & 2 of 4)

DIMENSIONS:		TOLERANCES UNLESS OTHERWISE SPECIFIED:		DWN	12MAR2014	TE Connectivity Harrisburg, PA 17105-3608
mm	0 PLC ±	1 PLC ±	2 PLC ±	CHK	12MAR2014	
MATERIAL:		FINISH:		APVD	12MAR2014	NAME
						OCEAN 2.0 Side Feed Applicator
						SIZE
						A 00779
						Customer Accessible Production Drawing
						SCALE 1:2 SHEET 4 OF 4 REV