

Logic Cube

PC-BASED LOGIC ANALYZER LAP-C SERIES

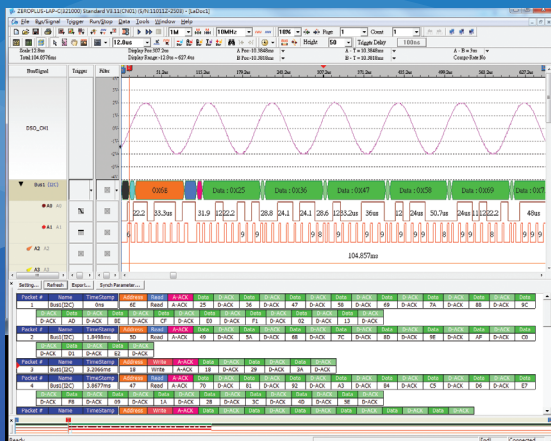
Buy now and get **128** protocol decoders for free!



More than 25,000 sold!

Protocol Analyzer Module : ZEROPLUS features include the decoding of 100 different bus protocols from multi-media, automotive, IC interface, Memory to PC system and protocols including I2C, UART, SPI, 1-WIRE, CAN, etc. We can also provide customized protocol decoding.

Oscilloscope Connectivity : Logic Cube has been designed to work with an oscilloscope to enable both analog and digital signals to be captured.



▲ DSO-stacking is supported to measure mixed signals.

Programmable Trigger : User defined trigger condition and setting mode in both serial signal, parallel signal and trigger delay functions.

PC-Based Interface : The ZEROPLUS logic has a Start button to commence sampling, and connects to a PC via fast USB v2.0 (v1.1 compatible) interface. Windows 2000 / xp / vista / win 7 compatible.

Extending Channel Capture : Logic analyzers may be linked to increase both capture memory and the number of channels. (only 322000 & 32128)

Data Compression : The ZEROPLUS incorporates a sophisticated compression algorithm which enables more data to be captured without loss of any information.

Filtration : Captured data may be filtered to economise on capture memory. This allows the user to store only the data they need.

Product model		LAP-C(16064)	LAP-C(16128)	LAP-C(162000)	LAP-C(32128)	LAP-C(322000)
Operating System		Windows 10/8.1/7/Vista/XP/2000				
Interface		USB 2.0				
Sample Rate	Internal Clock (Timing Mode)	100 Hz~200 MHz	100 Hz~200 MHz	100 Hz~200 MHz	100 Hz~200 MHz	100 Hz~200 MHz
	External Clock (State Mode)	75 MHz	100 MHz	100 MHz	100 MHz	100 MHz
Threshold Voltages	Bandwidth	75 MHz	75 MHz	75 MHz	75 MHz	75 MHz
	Working Range	-6 V ~ +6 V	-6 V ~ +6 V	-6 V ~ +6 V	-6 V ~ +6 V	-6 V ~ +6 V
	Accuracy	±0.1 V	±0.1 V	±0.1 V	±0.1 V	±0.1 V
Memory	Memory	1 Mbits	4 Mbits	64 Mbits	4 Mbits	64 Mbits
	Depth (Per Channel)	64 Kbits	128 Kbits	2 Mbits	128 Kbits	2 Mbits
	Data Compression (Per Channel)	max compression rate - 256x				
Trigger	Condition	Pattern/Edge	Pattern/Edge	Pattern/Edge	Pattern/Edge	Pattern/Edge
	Trigger Channel	16 CH	16 CH	16 CH	32 CH	32 CH
	Trigger Delay	YES	YES	YES	YES	YES
	Trigger Level	1 Level	1 Level	1 Level	1 Level	1 Level
	Trigger Count	1~65535	1~65535	1~65535	1~65535	1~65535
Software Functions	Time Base Range	5 ps ~1 0 Ms				
	Vertical Sizing	1 ~ 5.5				
	Language	Chinese (Simplified / Traditional) English				
	Maximum Trigger Page	8192 Pages				
	Data Contrast	N/A		✓	N/A	✓
	Latch Function	N/A		✓	N/A	✓
	Protocol Packet Trigger	parallel				serial \ parallel
Pulse Width Trigger Module		option				free
Power	Power	USB (DC 5V, 500mA)				
	Power at rest	1 W				
	Power at work	2 W				
Maximum Input Voltage		±30 V				
Impedance		500KΩ/10pF				
Safety Certification		FCC / CE / WEEE / RoHS / REACH				
Product Dimension		125mm*92mm*25mm				
Standard Accessories	Test Cable	8pin*2 / 2pin*1 / 1pin*1			16pin*1 / 8pin*2 / 2pin*1 / 1pin*1	
	Probe (Testing Hook)	20 pieces/package			36 pieces/package	
	USB Cable	1				
	Driver CD	1				
	Installation Guide	1				
	Portable bag	1				

Data Contrast
 Contrast the waveforms of two LA files(their environment parameters should be same). The waveform differences will be auto-marked with orange wavy lines by the software, and the contrast result will be displayed in the LOG window.

Statistics
 In the Statistics window, users can see the quantity of positive periods, negative periods and full periods of each channel; also they can set conditional period to check if any signal is out of the condition, if any, the software will mark its channel in red.

Memory Analyzer
 Display the packet data that decoded by the standard modules as common memory map. For EEPROM, users can clearly understand the read/write status of each bit address in the memory, so as to handle the memory actions fast.

Bus Packet List
 With modules, the standard software can decode the packet status of various series protocols and display it in a packet list, to show the huge packet data like a tree, so engineers can analyze the relation between each packet status more quickly.



Pulse Width Trigger Module (Option)

The additional pulse width trigger module could upgrade logic analyzer pulse width trigger capability.

Accessories Contents

- Pulse Width Trigger Module *1
- Test Cable (7pins)*1
- Test Cable (2pins)*1
- User Guide *1

5.4cm(L) * 4.5cm(W) * 1.8cm(H) 50g

ZEROPLUS I2C-SPI Control Center (Option)

It is a efficient tool for accessing the data of the Protocol Analyzer I2C/ Protocol Analyzer SPI Which can access the Data of the I2C or SPI quickly and simulate the statuses of the Master/ Slave synchronously.

Include: GPIO Mode, SPI Mode, I2C Mode, I2C Monitor...