

Watertight covers for IP67 plugs & inlets

North American & international devices



Part number	Device rating	Plug type
476903	20/16A	2+PE
476913	20/16A	3+PE
476923	20/16A	3+N+PE
476905	30/32A	2+PE
476905	30/32A	3+PE
476925	30/32A	3+N+PE
476907	60/63A	all
476909	100/125	all

Long thread plastic cable gland for EPIC® ULYSSE

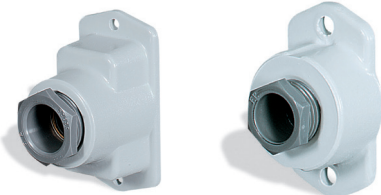


Part number		Cable outer diameter		Thread size	Thread length	
gland	locknut	in	mm		in	mm
571129	571229	0.70 - 0.98	18 - 25	PG 29	0.59	15

Flanges with cable gland for EPIC® ALUPRES

raised flange

flat flange



Part number	Window size	Cable outer diameter		Thread
		in	mm	
F0 flat flange				
541080FX*	20/16A	0.35 - 0.47	9 - 12	NPT 1/2"
541090FX**	20/16A	0.47 - 0.63	12 - 16	NPT 3/4"
541030FX	20/16A	0.67 - 0.79	17 - 20	NPT 1"
F1 flat flange				
541011FX	30/32A, 60/63A	0.35 - 0.47	9 - 12	NPT 1/2"
541021FX	30/32A, 60/63A	0.55 - 0.63	14 - 16	NPT 3/4"
F1 raised flange				
540151FX	30/32A, 60/63A	0.63 - 0.87	16 - 22	NPT 1"
540141FX	30/32A, 60/63A	0.98 - 1.02	25 - 26	NPT 1 1/4"

* Supplied with 20/16A EPIC® ALUPRES: 2+PE, 3+PE

** Supplied with 20/16A EPIC® ALUPRES: 3+N+PE